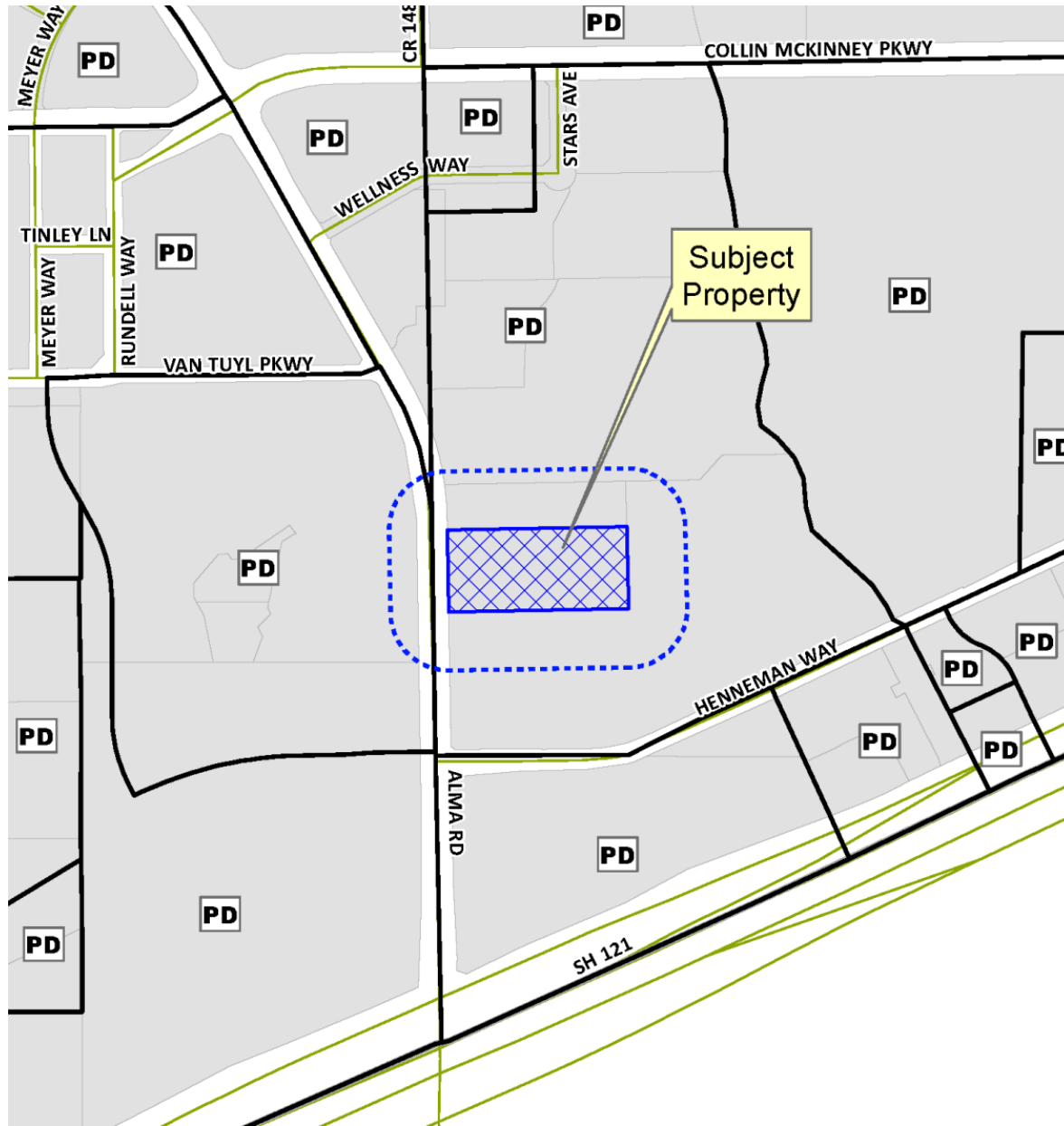


Case No. 12-213ME

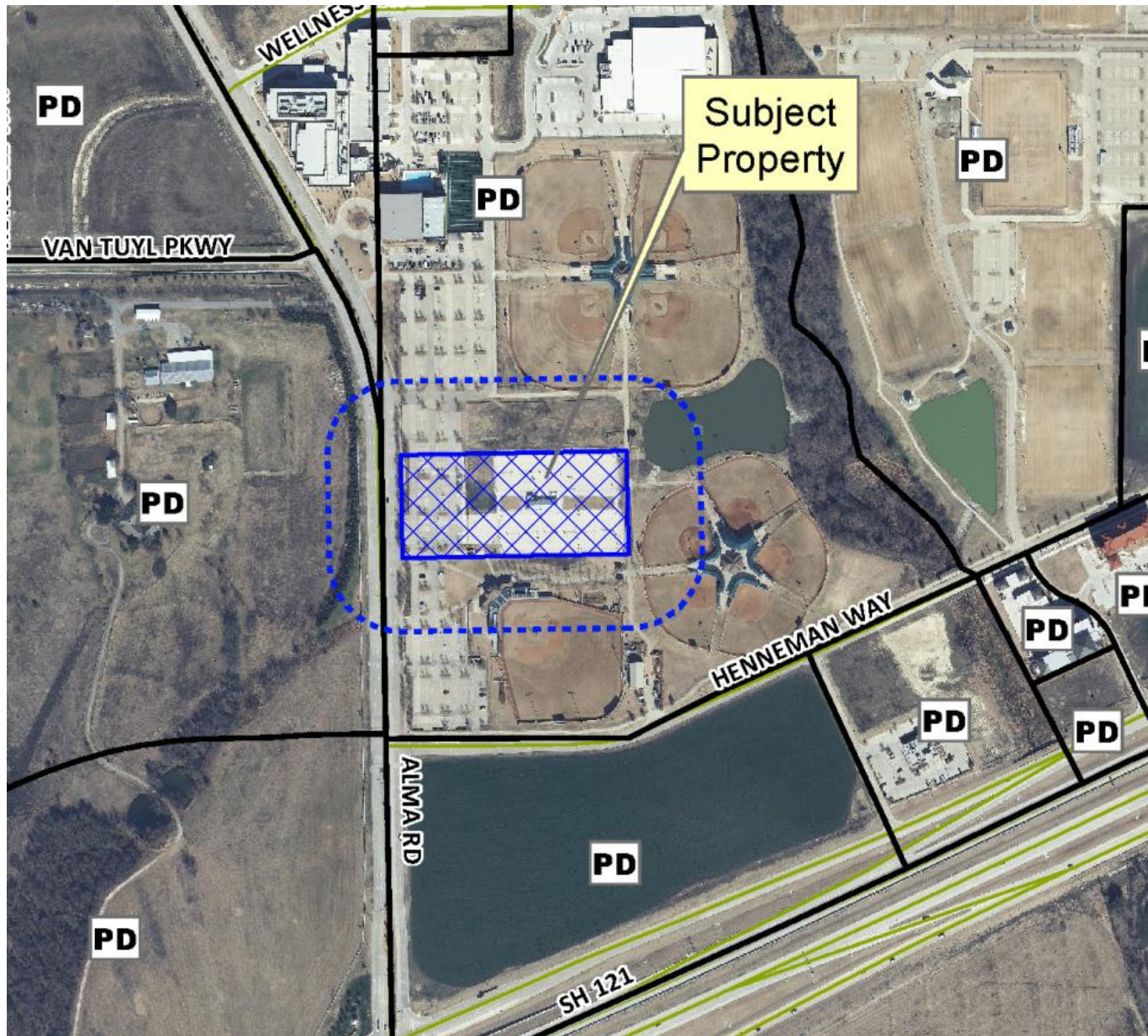
Conduct a Public Hearing to Consider/Discuss/Act on the Request by SDH Realty, Ltd., for the Approval of a Meritorious Exception for The Beach At Craig Ranch, Approximately 5.00 Acres, Located on the East Side of Alma Road and Approximately 550 Feet North of Henneman Way



Location Map



Aerial Exhibit



Proposed Zoning Exhibit



Classic Design Group
Commercial Architectural Design
4142 Britton Court
Grand Prairie, Texas 75052
Office: 972.861.9522
Fax: 972.861.6402
email: classic_design@highland.net

**Building Remodel For
The Beach At Craig Ranch**
6145 Alma Road
McKinney, Texas

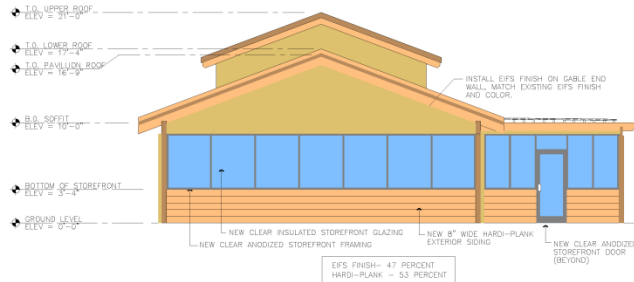
Revisions	By	Date	Description

Owner / Developer
SDH Realty
5158 Village Creek Drive
Suite 102
Piano, TX 75093
Susan Hoeltig: 214-377-6711

General Contractor

Sheet Name
**EXTERIOR
ELEVATIONS**

Drawn By
O. Colon
Checked By
Project Number
Date
11 Nov. 2012
Sheet
OF
A5



01 ELEVATION - EAST

Scale: 3/16"=1'-0"



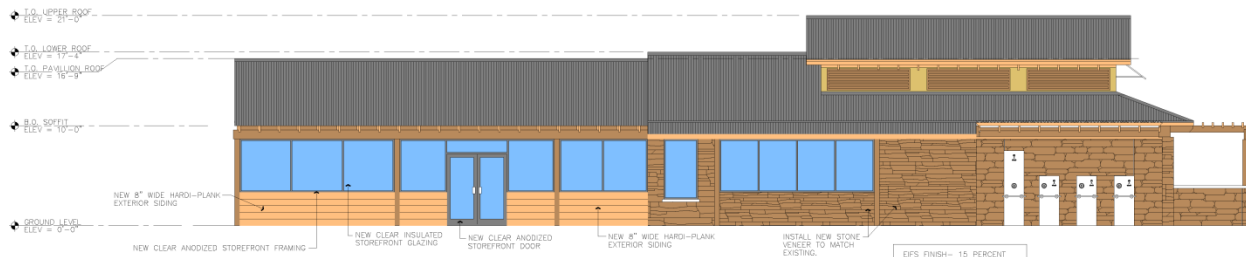
02 ELEVATION - WEST

Scale: 3/16"=1'-0"



03 ELEVATION - SOUTH

Scale: 3/16"=1'-0"



04 ELEVATION - NORTH

Scale: 3/16"=1'-0"

Material Finishes	
	STUCCO FINISH
	STONE FINISH
	HARD-PLANK FINISH

Staff Recommendation

Staff recommends denial of the
proposed meritorious exception request
as outlined in the Staff Report