

PARKS DEVELOPMENT SERVICES

Who we are:

- Parks, Planning and Development Manager (vacant)
- Senior Parks Planner
- Parks Planner (part time)

What we do:

- Develop and implement the Parks Capital Improvement Program which includes parks, trails, medians and park facilities
- Acquire land for future parks, trails and park facilities
- Work with the development community on compliance with the parkland dedication ordinance and Trails Plan

PARKS DEVELOPMENT SERVICES

Where we've been...what we've done...

Sonntag Park

Bonnie Wenk Park Phase 1 Enhancements

Finch Park Pavilion

Valley Creek Park Retaining Walls

Hardin Fencing

Median Plantings

Gabe Nesbitt Master Plan

Collin County Grant funding on 4 trail projects

PARKS DEVELOPMENT SERVICES

Sonntag Neighborhood Park (official dedication April 29th)

- \$2,275,000 project budget
- Located in Westridge
- 19 acre park with a pavilion, trails, play structures, swings, splash pad, parking and open play area



PARKS DEVELOPMENT SERVICES

Bonnie Wenk Phase 1 Enhancements

- \$385,000 project budget
- Stonework around the amphitheater
- Pedestrian and vehicular bridge railing modifications



PARKS DEVELOPMENT SERVICES

Finch Park Pavilion

- \$250,000 pavilion
- Replacement of old, outdated pavilion with a new larger, aesthetically pleasing ADA compliant pavilion, new tables and trash cans



PARKS DEVELOPMENT SERVICES

Valley Creek Park Retaining Walls

- \$275,000 project
- Replacement of failing railroad tie retaining wall with new concrete walls and pedestrian handrails

North
side of
Eldorado
Parkway



South
side of
Eldorado
Parkway



PARKS DEVELOPMENT SERVICES

Hardin Fencing

- \$275,000 project cost
- Replacement of wooden fence panels that were in disrepair with more durable vinyl panels



PARKS DEVELOPMENT SERVICES

Median Plantings – using median landscape funds and tree reforestation funds

Silverado Trail, Wilmeth Road, Alma Road, Ridge Road, Airport Road
Wilson Creek Boulevard



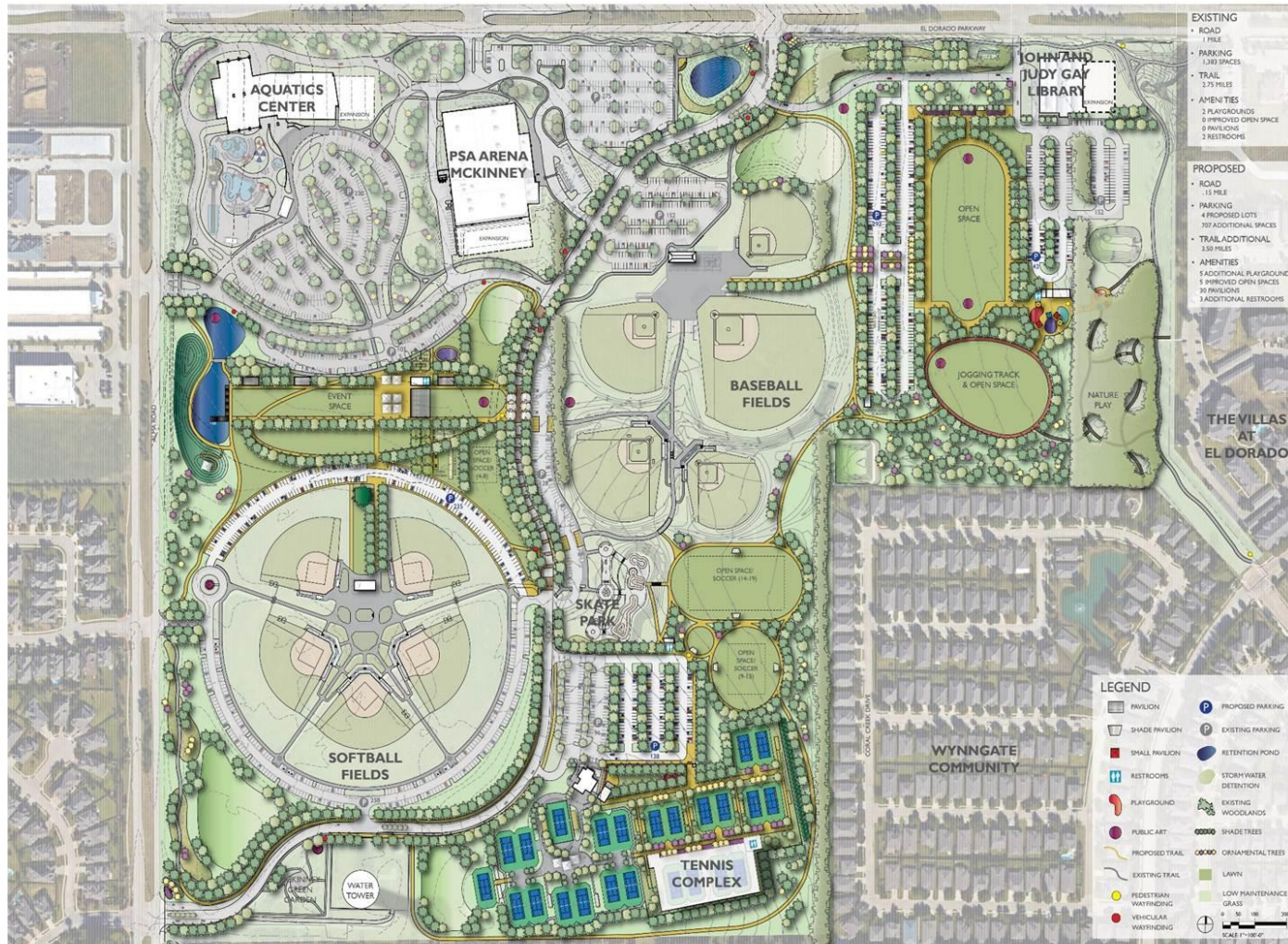
Wilson Creek Parkway



Hardin Road

PARKS DEVELOPMENT SERVICES

Gabe Nesbitt Master Plan



PARKS DEVELOPMENT SERVICES

What we are doing now....

- 2015 PROS Master Plan
- Bonnie Wenk Park Phase 2
- Community Center Patio and Playground
- Gabe Nesbitt Tennis Center Expansion
- Wilson Creek Hike and Bike Trail
- Comegy's Creek Hike and Bike Trail
- Stacy/SPCA Hike and Bike Trail
- Rowlett Creek/121 Hike and Bike Trail
- Land Acquisition

PARKS DEVELOPMENT SERVICES

Bonnie Wenk Park Phase 2

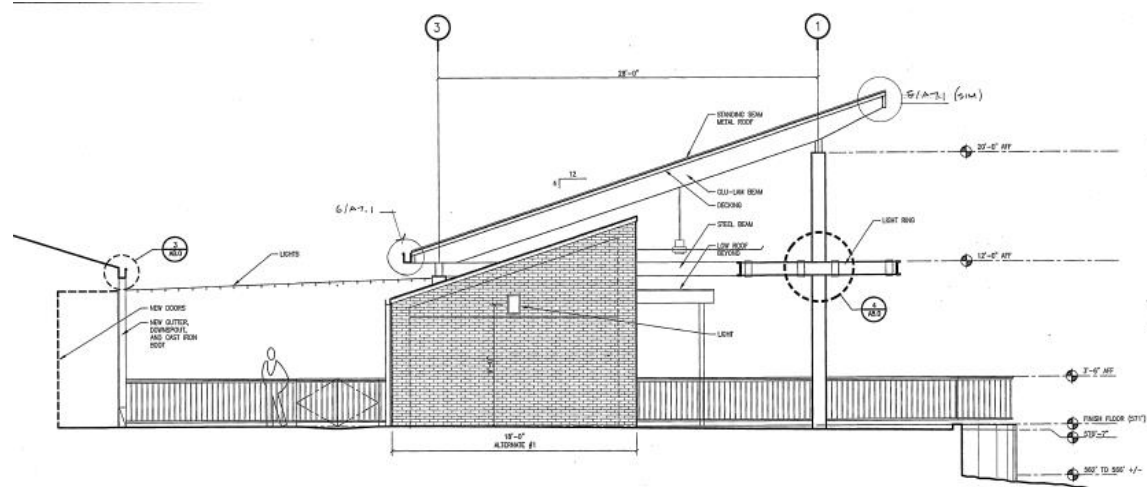
- \$3.9M project cost
- 90% design complete
- All-Inclusive playground \$530,000
- Construction should begin late summer, with a December 2017 completion



PARKS DEVELOPMENT SERVICES

Community Center Patio/ Playground/ Restroom Upgrades

- \$1,062,055 project cost
- Construction to begin summer of 2016, with a 2017 completion



PARKS DEVELOPMENT SERVICES

The Courts at Gabe Nesbitt expansion

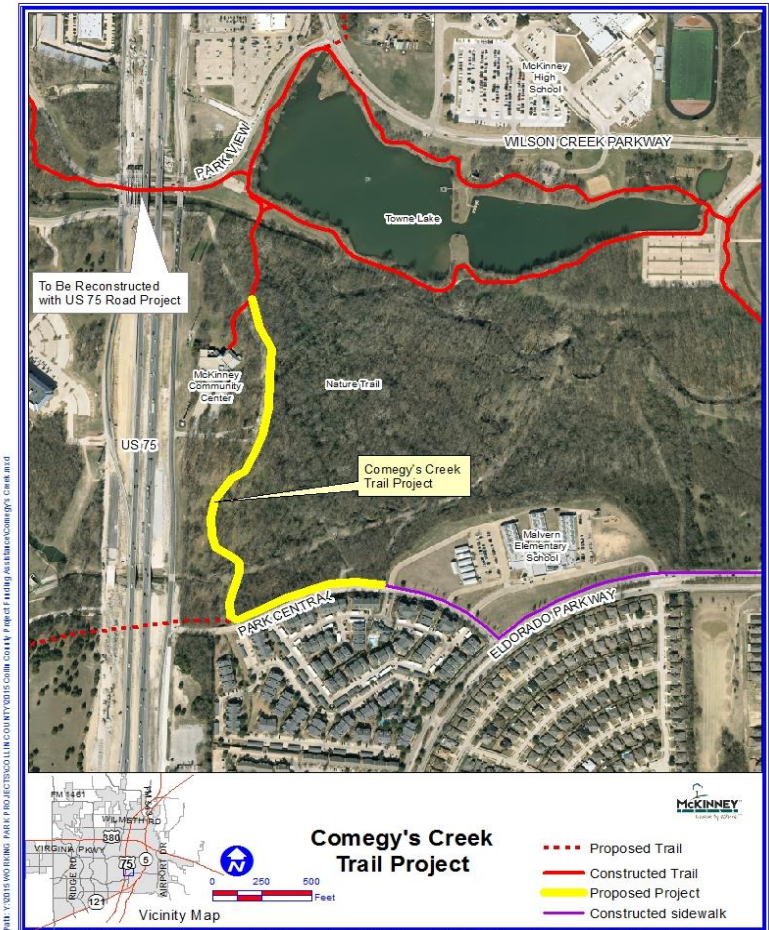
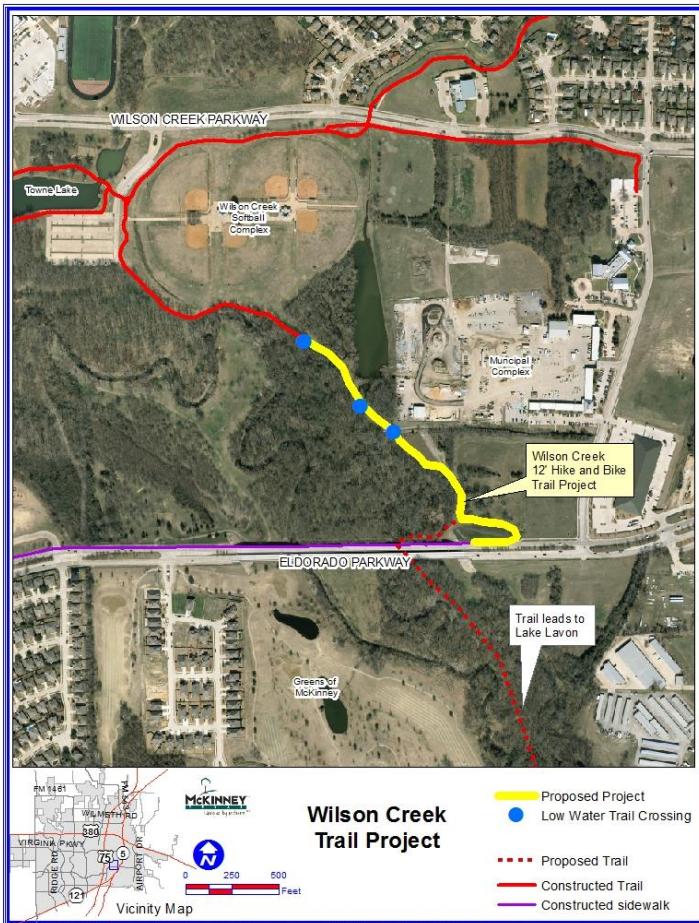
- \$7M project cost
- Includes 9-10 outdoor courts, modifications to championship court, future indoor courts, landscape enhancements along Alma, additional trail segments, satellite maintenance building, restrooms and sports practice areas
- Currently in conceptual phase with design completion by Dec 2016



PARKS DEVELOPMENT SERVICES

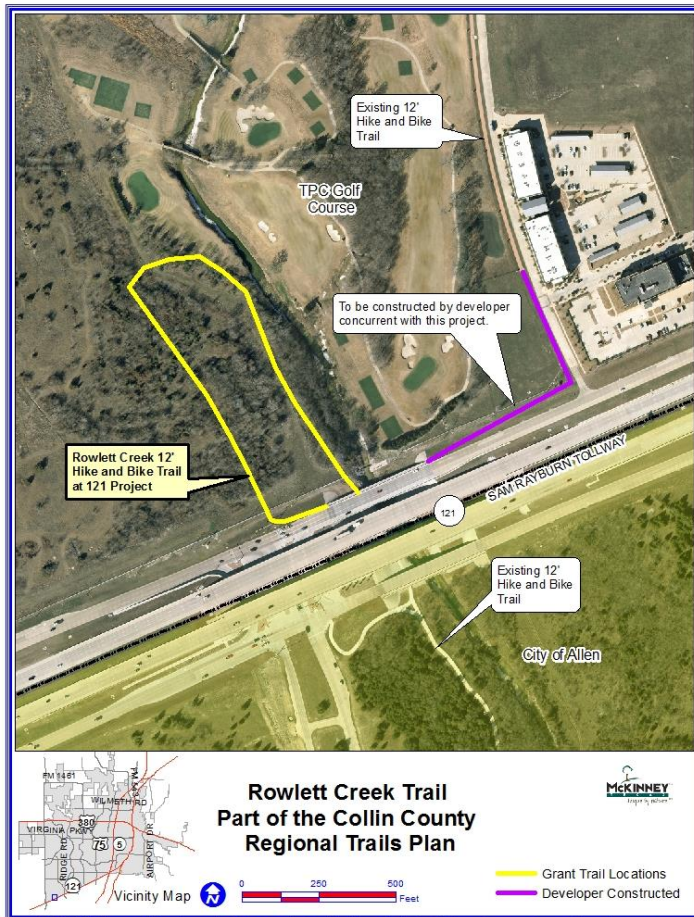
Wilson Creek Trail
 \$508,150 budget +
 \$200,000 grant money

Comegy's Creek Trail
 \$800,000 budget +\$243,000
 grant money



PARKS DEVELOPMENT SERVICES

Rowlett Creek/121 Trail
 \$300,000 budget +\$50,000 grant money



Stacy Road/SPCA Trail
 \$160,000 budget +\$80,000 grant money



PARKS DEVELOPMENT SERVICES

Ash Woods Pedestrian Bridge

- \$176,000 budget
- Under construction
- Summer 2016 completion
- Partnership with City of Frisco, City of McKinney, FISD



Drilling for bridge piers

PARKS DEVELOPMENT SERVICES

Where we are headed...

FISD Scott Elementary Neighborhood School

Park

Finch Park Improvements (Phase IV)

Parks Accessibility

Land Acquisition

Gray Branch Park

Hike and Bike Projects

Finally....Wherever our new “Road Map”, our Parks, Recreation and Open Space Master Plan tells us to!