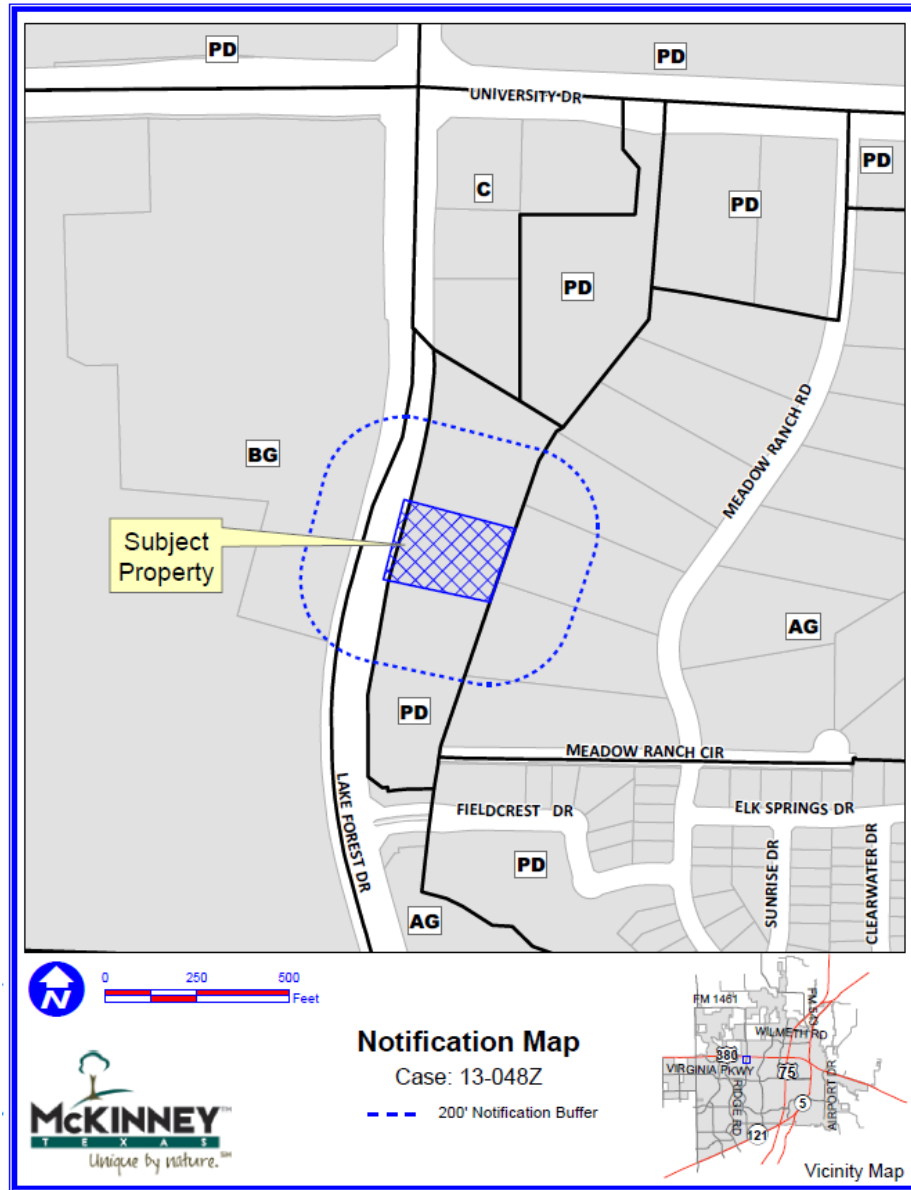


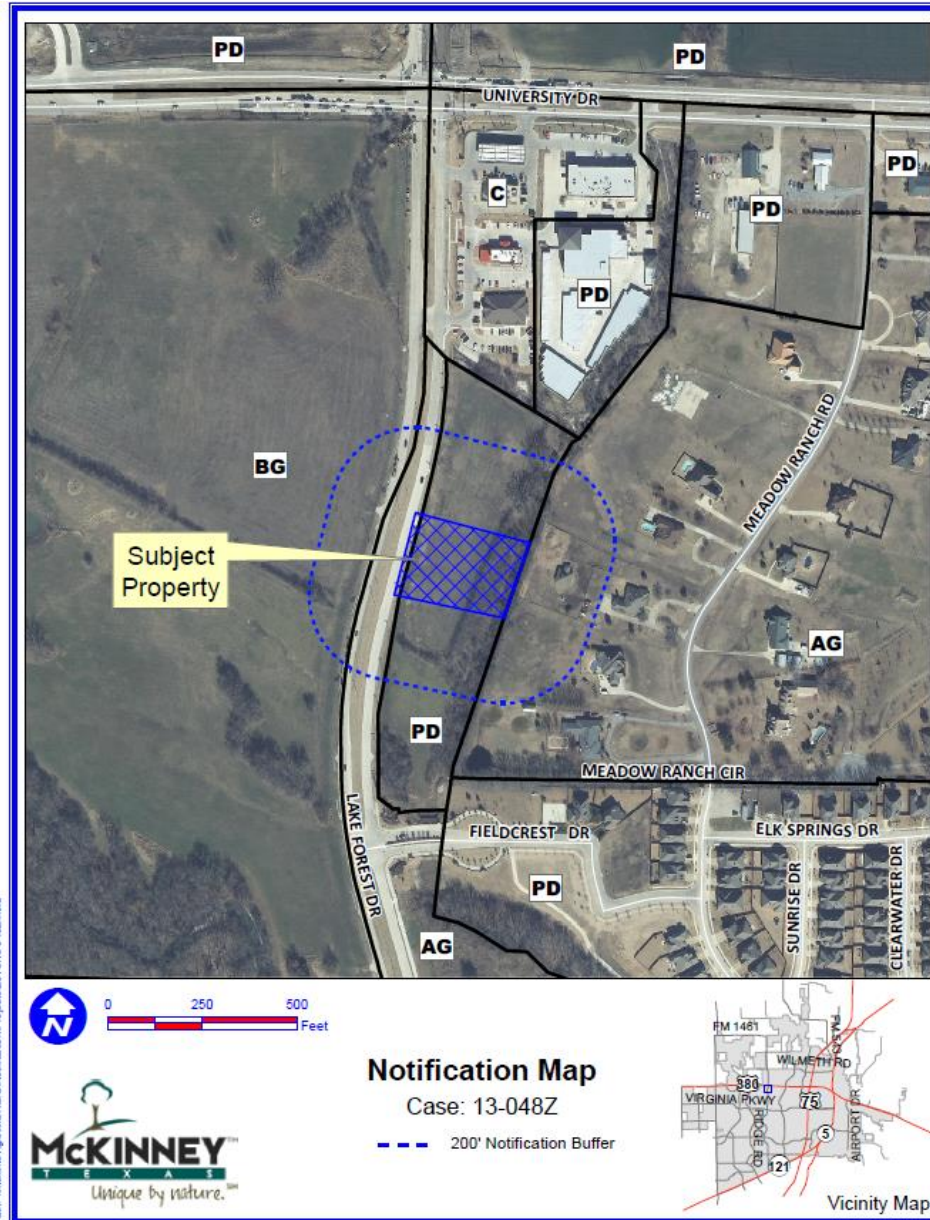
Case No. 13-048Z
Craig Brothers Trust Daycare
City of McKinney
Planning



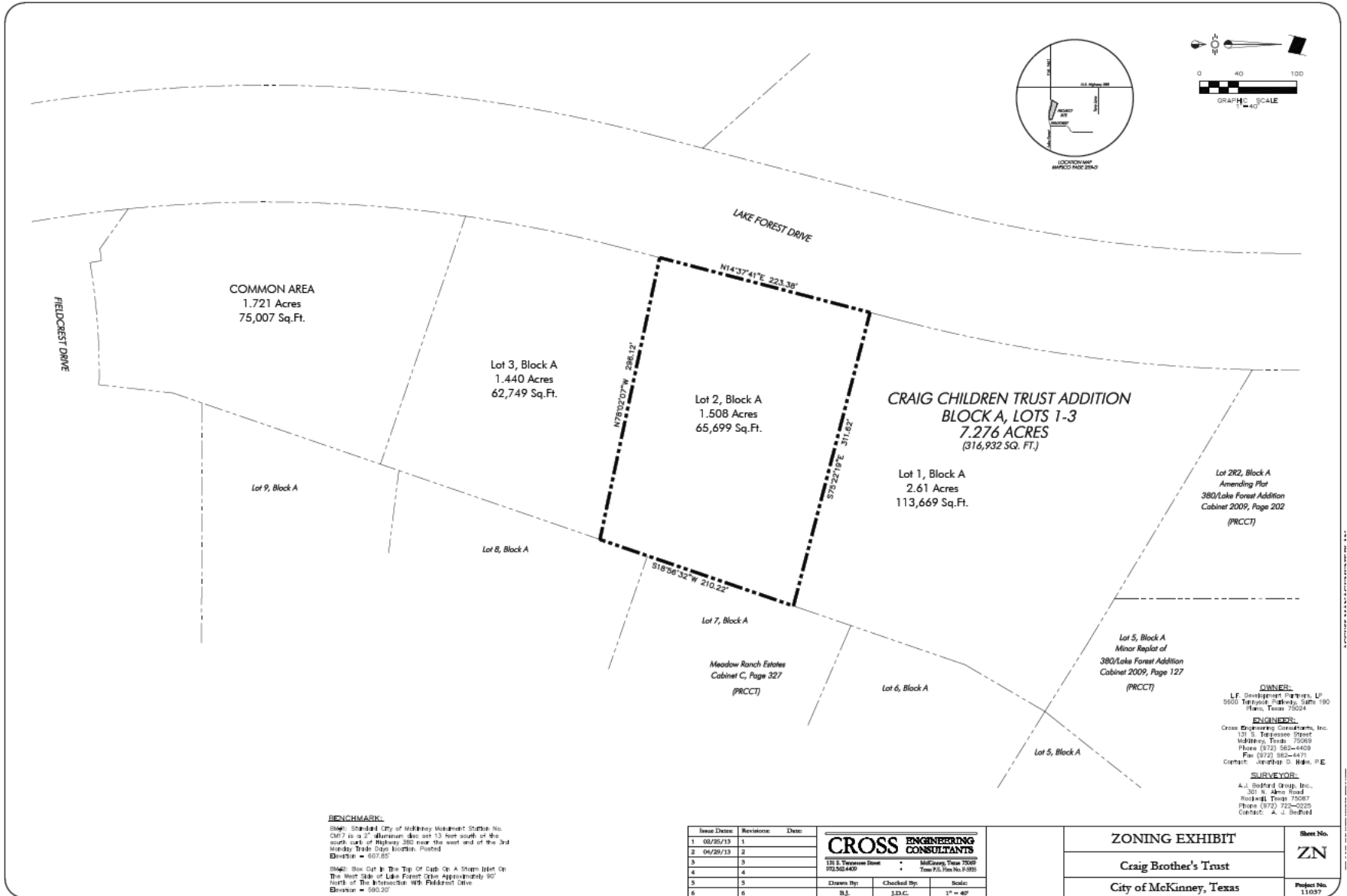
Location Map



Aerial Exhibit



Proposed Zoning Exhibit



BENCHMARK:
 (1) 2011 City of McKinney Monument Station No. CM7 is a 2" diameter disc set 13 feet south of the south side of Highway 380 near the west end of the 3rd already 2009 lotline. Pointed
 Elevation = 607.85'
 (2) Box Out to the Top of Curb on A Street (set on the West Side of Lake Forest Drive Approximately 50' North of the Intersection with Fieldcrest Drive
 Elevation = 590.20'

Issue/Date:	Revision:	Date:
1	06/26/13	1
2	06/28/13	2
3		3
4		4
5		5
6		6

CROSS ENGINEERING CONSULTANTS		
131 E. Tennessee Street 973302440	McKinney, Texas 75069 Town P.O. Box No. 5395	
Drawn By: B.J.	Checked By: J.D.C.	Scale: 1" = 40'

OWNERS:
 LE Development Partners, LP
 5605 Telford, Suite 190
 Plano, Texas 75024

ENGINEERS:
 Cross Engineering Consultants, Inc.
 131 E. Tennessee Street
 McKinney, Texas 75069
 Phone (972) 562-4409
 Fax (972) 562-4411
 Creator: Kenneth D. Hahn, P.E.

SURVEYOR:
 A.J. Bedford Group, Inc.
 301 W. Alma Road
 Rockwall, Texas 75087
 Phone (972) 722-2225
 Creator: A.J. Bedford

ZONING EXHIBIT	Sheet No.
Craig Brother's Trust	ZN
City of McKinney, Texas	Project No. 110597



Staff Recommendation

Staff recommends **approval** as outlined in the Staff Report.