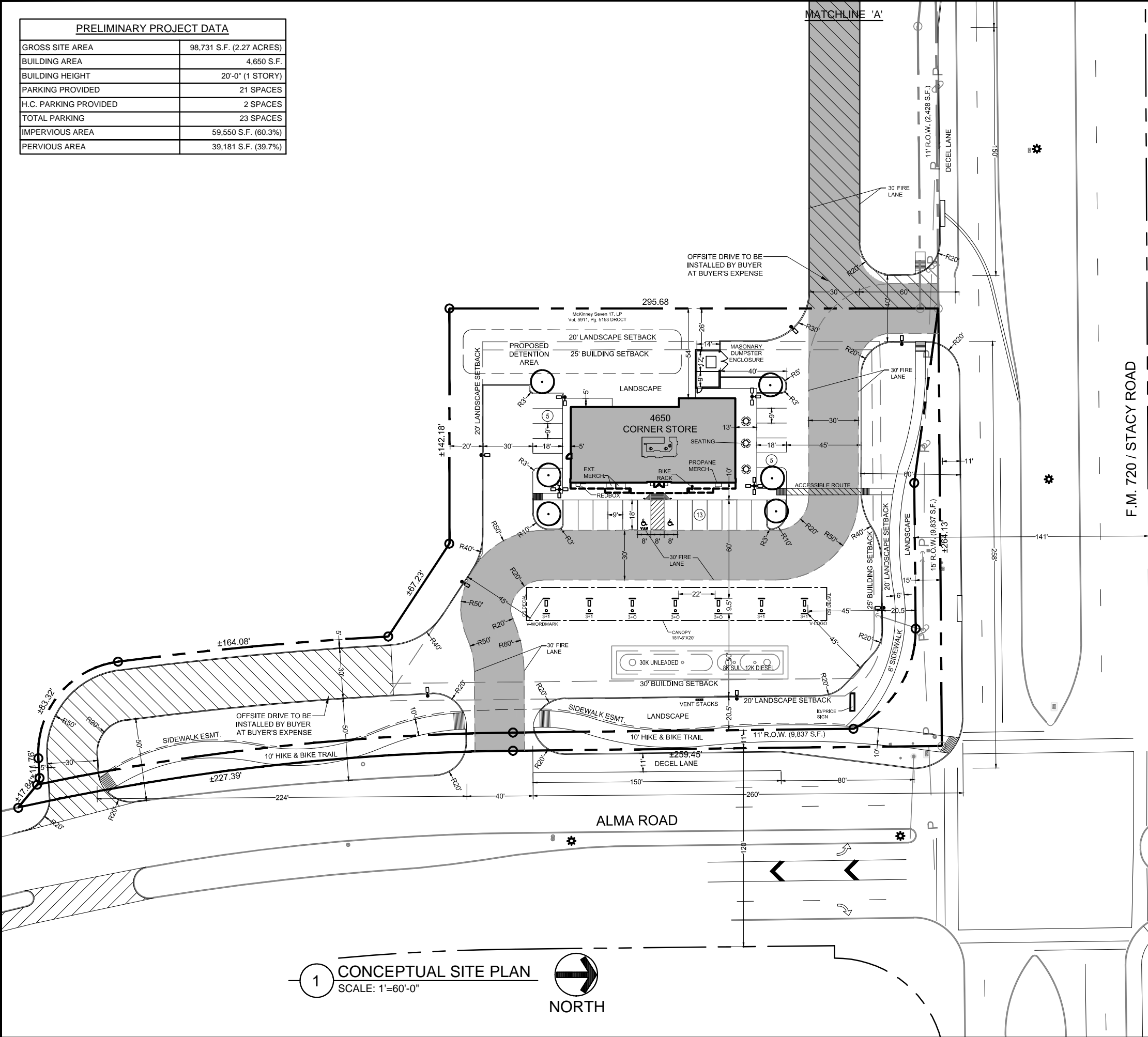


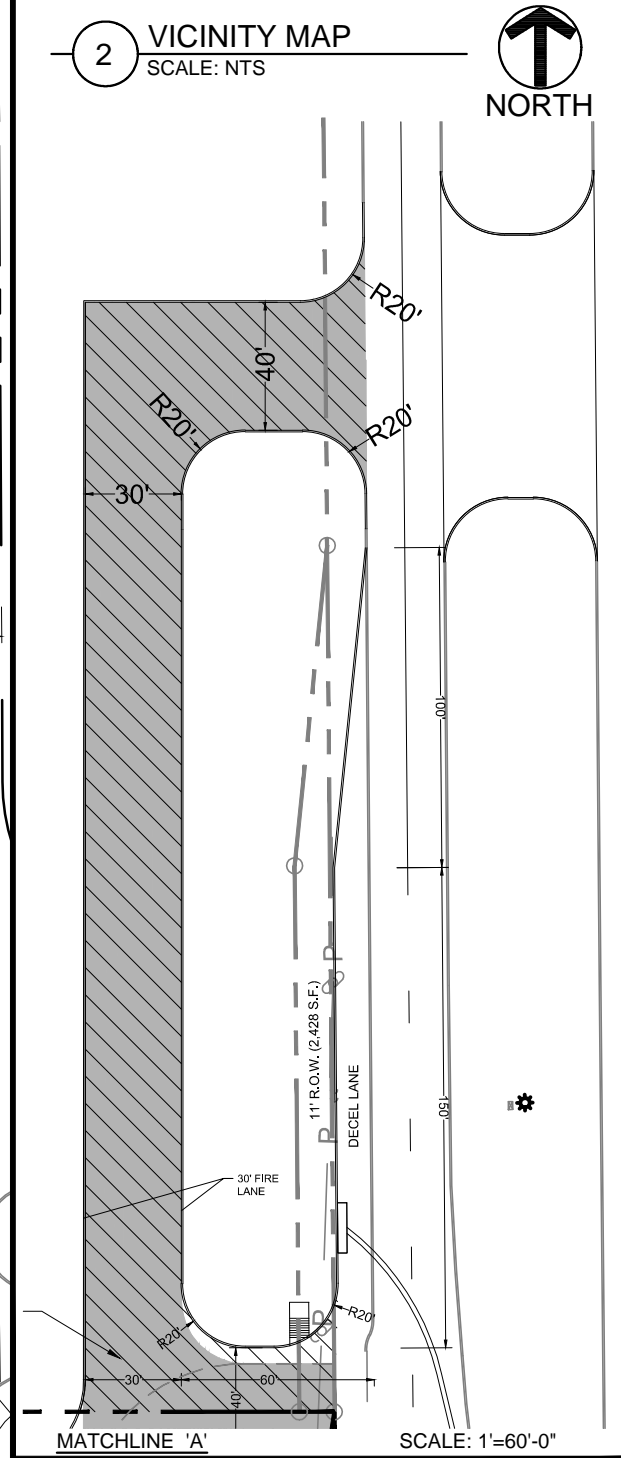
PRELIMINARY PROJECT DATA	
GROSS SITE AREA	98,731 S.F. (2.27 ACRES)
BUILDING AREA	4,650 S.F.
BUILDING HEIGHT	20'-0" (1 STORY)
PARKING PROVIDED	21 SPACES
H.C. PARKING PROVIDED	2 SPACES
TOTAL PARKING	23 SPACES
IMPERVIOUS AREA	59,550 S.F. (60.3%)
PERVIOUS AREA	39,181 S.F. (39.7%)



1 CONCEPTUAL SITE PLAN  
SCALE: 1"=60'-0"  
NORTH



2 VICINITY MAP  
SCALE: NTS  
NORTH



SCALE: 1"=60'-0"  
MATCHLINE 'A'

NOTE:  
THIS DRAWING IS FOR CONCEPTUAL PURPOSES ONLY. SITE INFORMATION WAS OBTAINED FROM CLIENT'S DOCUMENTS. DESIGN MAY VARY, DEPENDING ON ACTUAL TOPOGRAPHY, DRAINAGE, SOILS, SURVEY, ETC. THIS ADDITIONAL DATA AND SITE CONDITIONS COULD CAUSE CHANGES IN PARKING RATIOS AND SPACE AVAILABLE FOR DEVELOPMENT AND MAY INCREASE ESTIMATED DEVELOPMENT COSTS.



SUP SITE PLAN  
CST CORNER STORE  
SWC STACY ROAD & ALMA ROAD  
MCKINNEY, TX

REVISION RECORD	
10/31/13	INITIAL SUBMITTAL
05/06/14	INITIAL SUBMITTAL
08/19/14	INITIAL SUBMITTAL
03/03/15	INITIAL SUBMITTAL
04/29/15	CITY COMMENTS
05/05/15	CITY COMMENTS

SHEET NO.  
C-1.0