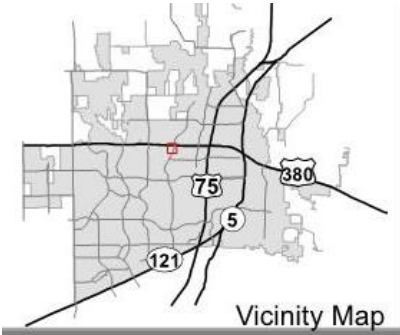
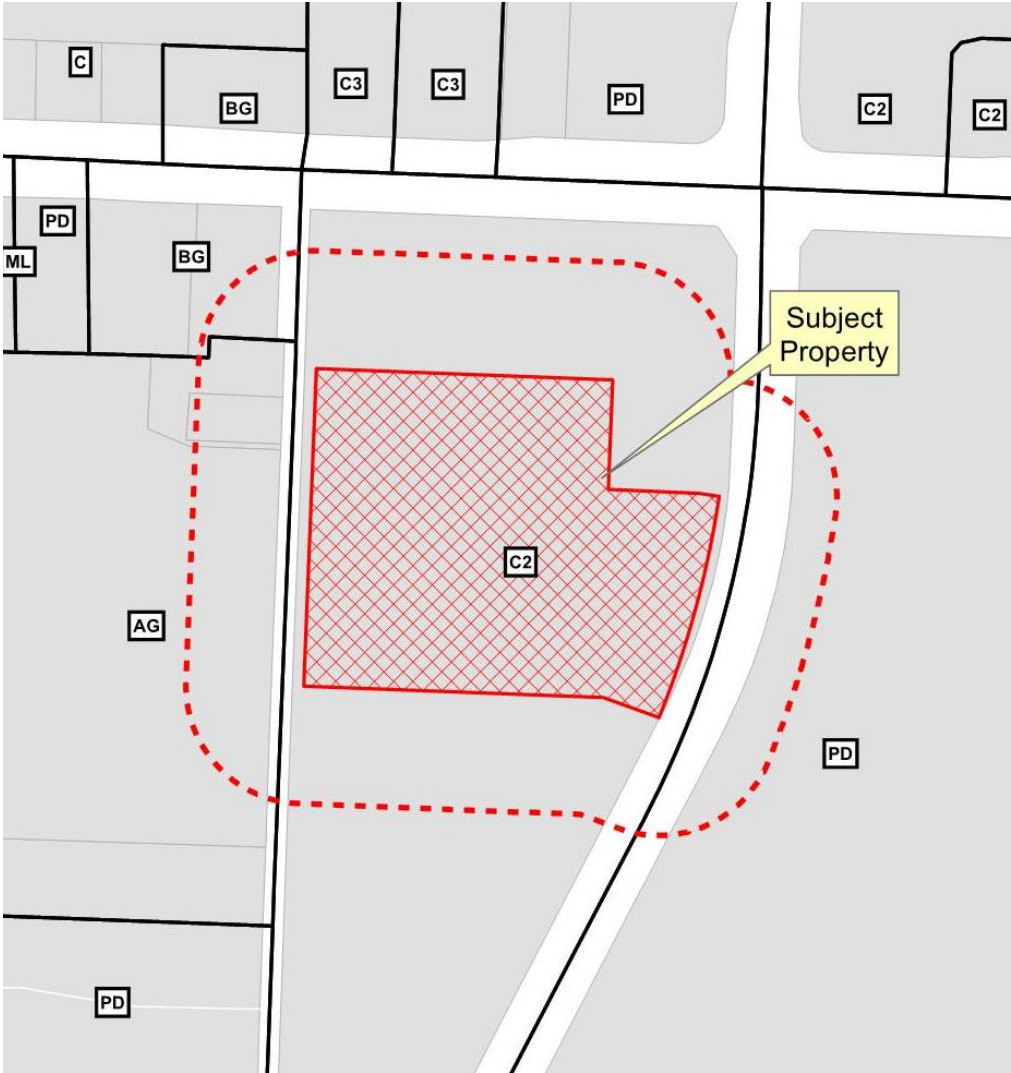


# Cinemark Façade Plan Appeal

17-007FR



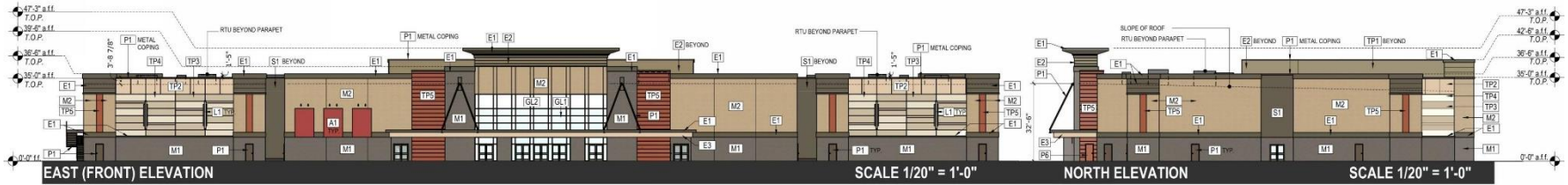
# Location Map



# Aerial Exhibit



# Proposed Elevations



**EAST FACADE MATERIAL AREAS & PERCENTAGES:**

	AREA (SF)	PERCENTAGE
BRICK VENEER	7,209 SF	52%
EIFS.	1,965 SF	14%
STUCCO	480 SF	3%
CURTAIN WALL	929 SF	7%
ARCHITECTURALLY FINISHED TILT WALL	3,455 SF	24%
<b>TOTAL</b>	<b>14,118 SF</b>	<b>100%</b>

**NORTH FACADE MATERIAL AREAS & PERCENTAGES:**

	AREA (SF)	PERCENTAGE
BRICK VENEER	4,427 SF	66%
EIFS.	844 SF	12%
STUCCO	410	6%
ARCHITECTURALLY FINISHED TILT WALL	1,066 SF	16%
<b>TOTAL</b>	<b>6,737 SF</b>	<b>100%</b>

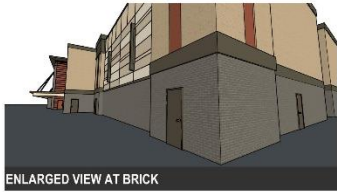


**WEST FACADE MATERIAL AREAS & PERCENTAGES:**

	AREA (SF)	PERCENTAGE
BRICK VENEER	7,482 SF	52%
EIFS.	1,834 SF	11%
STUCCO	1,065 SF	8%
ARCHITECTURALLY FINISHED TILT WALL	4,278 SF	29%
<b>TOTAL</b>	<b>14,657 SF</b>	<b>100%</b>

**SOUTH FACADE MATERIAL AREAS & PERCENTAGES:**

	AREA (SF)	PERCENTAGE
BRICK VENEER	4,427 SF	66%
EIFS.	844 SF	12%
STUCCO	410	6%
ARCHITECTURALLY FINISHED TILT WALL	1,066 SF	16%
<b>TOTAL</b>	<b>6,737 SF</b>	<b>100%</b>



**ELEVATION KEY**

TP1 SW 7851 ENDURING BRONZE	VT1 BRICK VENEER: CHARCOAL GRAY (RUNNING BOND)	LE1 DECORATIVE LIGHTING BEZEL
TP2 SW 6190 HICK HAZ	VT2 BRICK VENEER: WEATHERWOOD GRAY (RUNNING BOND)	TP11 ARCHITECTURALLY FINISHED TILT WALL: SHERWIN WILLIAMS ULTRA-CRETE - FINE (SW 6159)
TP3 SW 6110 INTERACTIVE CREAM	PT1 P1 PAINTED EIFS	TP12 ARCHITECTURALLY FINISHED TILT WALL: SHERWIN WILLIAMS ULTRA-CRETE - FINE (SW 6159)
TP4 SW 6150 PINKIE	PT2 P2 PAINTED EIFS	TP13 ARCHITECTURALLY FINISHED TILT WALL: SHERWIN WILLIAMS ULTRA-CRETE - FINE (SW 6159)
TP5 SW 6100 MERRILL	PT3 P3 PAINTED EIFS	TP14 ARCHITECTURALLY FINISHED TILT WALL: SHERWIN WILLIAMS ULTRA-CRETE - FINE (SW 6159)
TP6 SW 6100 CALUMBED	GL1 GLAZING CLEAR	TP15 ARCHITECTURALLY FINISHED TILT WALL: SHERWIN WILLIAMS ULTRA-CRETE - FINE (SW 6159)
TP7 P1 PAINTED STUCCO	GL2 GLAZING WHITE PANORIEL	TP16 ARCHITECTURALLY FINISHED TILT WALL: SHERWIN WILLIAMS ULTRA-CRETE - FINE (SW 6159)
TP8 P2 PAINTED STUCCO	AF1 FINING FABRIC: SUNDHELLA - TERRA COTTA	TP17 ARCHITECTURALLY FINISHED TILT WALL: SHERWIN WILLIAMS ULTRA-CRETE - FINE (SW 6159)

**NOTES:**  
 EXTERIOR METAL DOORS TO BE PAINTED P1 P2 OR P3 TO MATCH ADJACENT FACE.  
 ALL GLAZING TO BE THERMALLY BROWN IRON OXIDE TINTED + CLEAR + WHITE LIGHT REFLECTANCE OF IR.  
 ALL EXPOSED TILT PANELS TO RECEIVE SHERWIN WILLIAMS ULTRA-CRETE - FINE TEXTURE TOP COAT (SIMILAR FINISH TO EFS).



