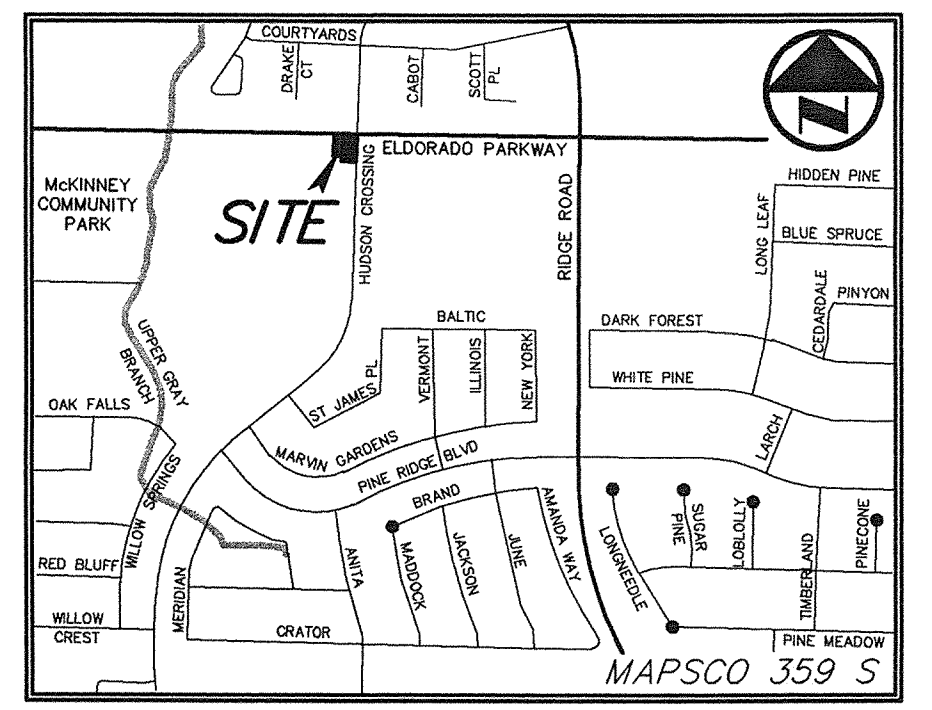
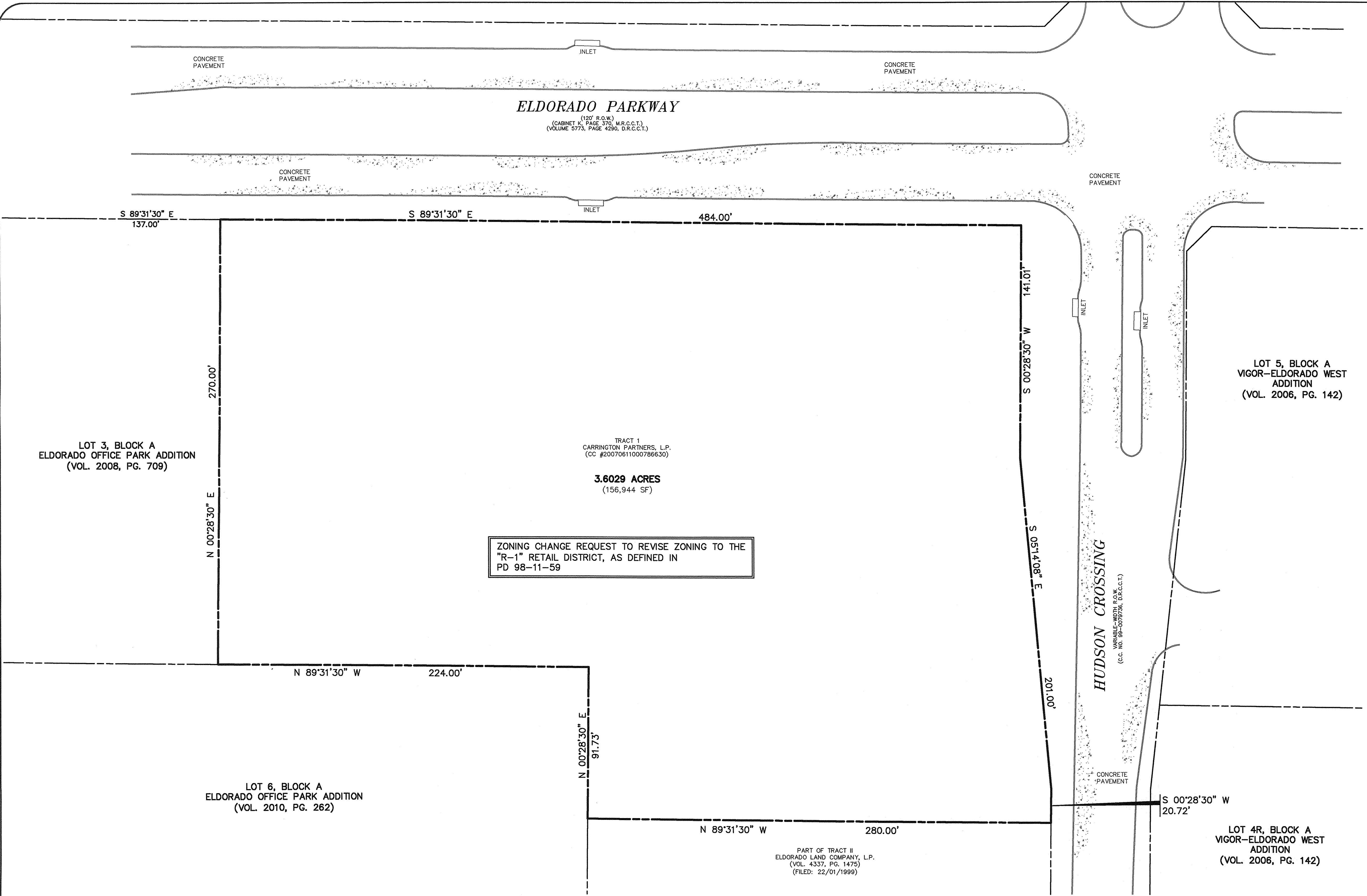
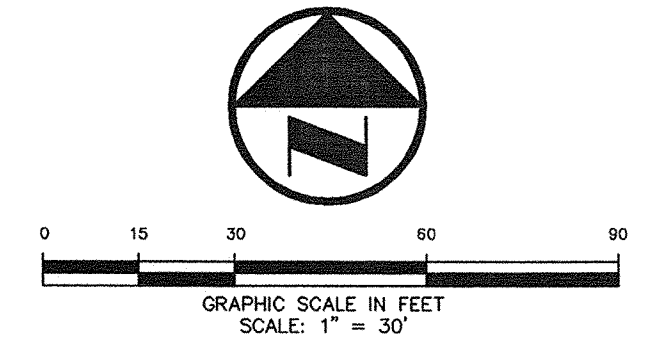


ASAMUELSON 04/18/2011 - 3:16PM
 N:\DOB\1200-1289\1203-11-008\DWG\1203-11-008-07A.DWG
 © POGUE ENGINEERING & DEVELOPMENT COMPANY, INC. 2007. ALL RIGHTS RESERVED. THE ENGINEERING DESIGN, RETAIL AND ENGINEERING DRAWINGS FOR THIS PROJECT AND/OR OVERALL PROJECT ARE THE LEGAL PROPERTY OF POGUE ENGINEERING & DEVELOPMENT COMPANY, INC. THEIR USE FOR REPRODUCTION, CONSTRUCTION, OR DISTRIBUTION IS PROHIBITED UNLESS AUTHORIZED IN WRITING BY POGUE ENGINEERING & DEVELOPMENT COMPANY, INC.

3.6029 ACRE TRACT



VICINITY MAP
NOT TO SCALE



ZONING CHANGE REQUEST TO REVISE ZONING TO THE "R-1" RETAIL DISTRICT, AS DEFINED IN PD 98-11-59

Exhibit B

NO.	DATE	REVISION / DESCRIPTION
DESIGN	DRAWN	DATE
AWS	AWS	04-18-11
		SCALE
		AS SHOWN
		NOTES
		-

OWNER
 CARRINGTON PARTNERS
 P.O. BOX 795908
 DALLAS, TEXAS 75379
 ALICE WONG
 (214) 731-9208 PHONE
 (214) 740-9198 FAX

PROJECT INFORMATION
 3.6029 ACRES
 ELDORADO OFFICE PARK
 CITY OF MCKINNEY, COLLIN COUNTY, TEXAS
 GEORGE HERNDON SURVEY, ABSTRACT NO. 390
 PROPOSED USE: RETAIL
 EXISTING ZONING: PLANNED DEVELOPMENT

THIS DOCUMENT IS RELEASED FOR THE PURPOSE OF INTERIM REVIEW UNDER THE AUTHORITY OF ARLEN W. SAMUELSON, P.E. 95877 ON 04-18-2011. IT IS NOT TO BE USED FOR CONSTRUCTION, BIDDING OR PERMIT PURPOSES.

PRELIMINARY
 FOR INTERIM REVIEW ONLY
 NOT TO BE USED FOR CONSTRUCTION OR BIDDING PURPOSES.
 Engineer: ARLEN W. SAMUELSON, P.E.
 P.E. No.: 95877
 Date: 04-18-2011
POGUE

POGUE
 ENGINEERING & DEVELOPMENT COMPANY, INC.
 1512 BRAY CENTRAL DRIVE
 SUITE 100
 MCKINNEY, TEXAS 75069
 (214) 544-8880 PHONE
 (214) 544-8882 FAX
 www.PogueEngineering.com

ZONING EXHIBIT
 3.6029 ACRE TRACT
 ELDORADO OFFICE PARK
 GEORGE HERNDON SURVEY, ABSTRACT NO. 390
 CITY OF MCKINNEY, TEXAS

SHEET NO.
21.01