



01 BLOCK A WEST ELEVATION (TENNESSEE ST)



02 BLOCK A WEST ELEVATION (TENNESSEE ST)

COLOR KEY

- 1 Heron Plume SW 6070 Cementitious Panel
- 2 Wool Skein SW 6148 Cementitious Panel
- 3 Mindful Gray SW 7016 Cementitious Panel
- 4 Porpoise SW 7047 Cementitious Panel
- 5 Anonymous SW 7046 Lap Siding
- 6 Acme Cinnebar Brick
- 7 Acme Red Sunset Brick
- 8 Acme Mushroom Gray Brick
- 9 Acme Ebony Brick
- 10 PAC-CLAD Weathered Zinc Mtl. Panel
- 11 PAC-CLAD Zinc Mtl. Panel
- 12 Pre-Finished Dark Bronze Mtl.
- 13 Cast Stone Band

NOTE:
 1) ALL MATERIALS AND COLORS TO RETURN TO AN INSIDE CORNER.
 2) ALL VINYL WINDOWS TO BE WHITE.

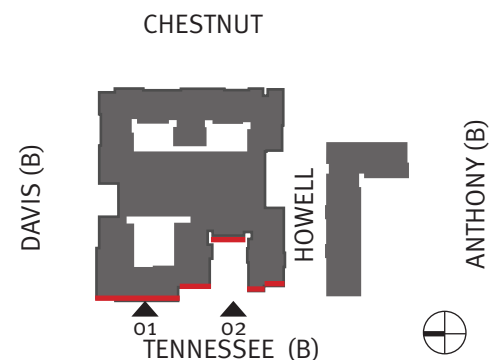
Material % Calculations (Detail 01 + 02)

| | % Total | % Required |
|--------------------|---------|-------------------|
| Brick | 83% | 80% |
| Cementitious Panel | 13% | Not to Exceed 20% |
| Metal Panel | 4% | |

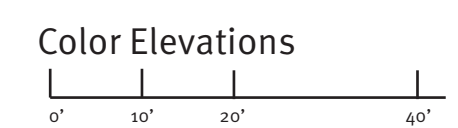
Glazing % Calculations (Detail 01 + 02)

| | Gross Sqft | Glazing Sqft | % Total | % Required |
|---------|------------|--------------|---------|------------|
| Level 1 | 4088 Sqft | 2106 Sqft | 51% | 30% |
| Level 2 | 3718 Sqft | 1314 Sqft | 35% | |
| Level 3 | 3718 Sqft | 1314 Sqft | 35% | |
| Level 4 | 3137 Sqft | 1360 Sqft | 43% | |

NOTE: Retail HVAC equipment located & screened in private courtyards. Residential HVAC equipment located on roof courtyard side.



Downtown McKinney Block A&B
 McKinney, TX



08.05.2016 2015034.00 ad
 Copyright © JHP 2016
 Not for Regulatory Approval, Permit or Construction: J. Mark Wolf, AIA
 Registered Architect of State of Texas, Registration No. 9129



01 BLOCK A NORTH ELEVATION (DAVIS ST)

COLOR KEY

| | |
|----|---|
| 1 | Heron Plume SW 6070 Cementitious Panel |
| 2 | Wool Skein SW 6148 Cementitious Panel |
| 3 | Mindful Gray SW 7016 Cementitious Panel |
| 4 | Porpoise SW 7047 Cementitious Panel |
| 5 | Anonymous SW 7046 Lap Siding |
| 6 | Acme Cinnebar Brick |
| 7 | Acme Red Sunset Brick |
| 8 | Acme Mushroom Gray Brick |
| 9 | Acme Ebony Brick |
| 10 | PAC-CLAD Weathered Zinc Mtl. Panel |
| 11 | PAC-CLAD Zinc Mtl. Panel |
| 12 | Pre-Finished Dark Bronze Mtl. |
| 13 | Cast Stone Band |

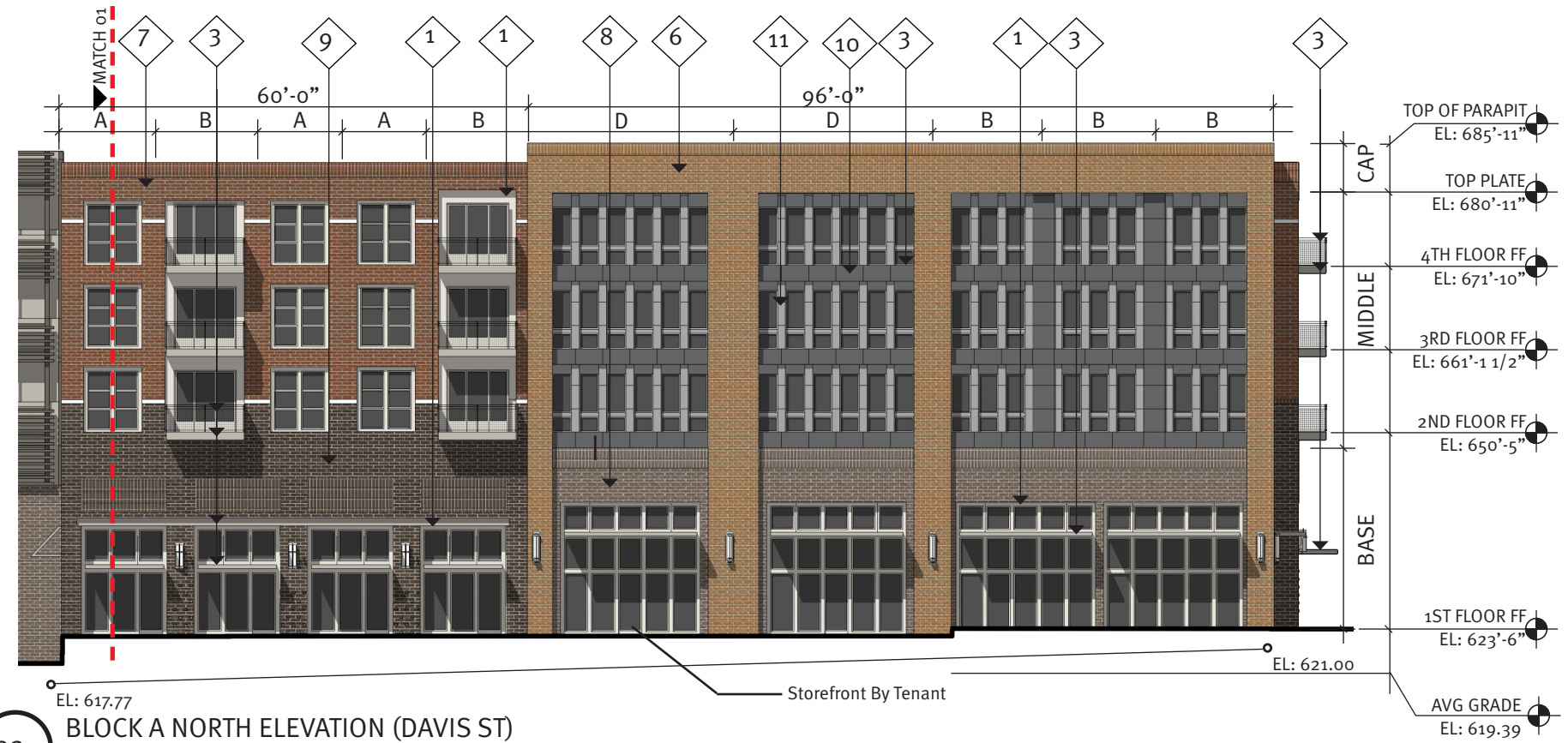
NOTE:
 1) ALL MATERIALS AND COLORS TO RETURN TO AN INSIDE CORNER.
 2) ALL VINYL WINDOWS TO BE WHITE.

Material % Calculations (Detail 01 + 02)

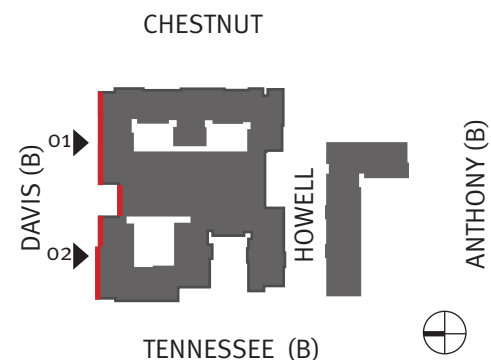
| | % Total | % Required |
|--------------------|---------|-------------------|
| Brick | 85% | 80% |
| Cementitious Panel | 6% | Not to Exceed 20% |
| Metal Panel | 9% | |

Glazing % Calculations (Detail 01 + 02)

| | Gross Sqft | Glazing Sqft | % Total | % Required |
|-------------------|------------|--------------|---------|------------|
| Retail lvl 1 | 4838 Sqft | 3355 Sqft | 70% | 30% |
| Residential lvl 2 | 4228 Sqft | 1500 Sqft | 35% | |
| Residential lvl 3 | 4228 Sqft | 1500 Sqft | 35% | |
| Residential lvl 4 | 3587 Sqft | 1500 Sqft | 42% | |



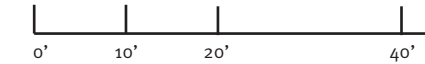
02 BLOCK A NORTH ELEVATION (DAVIS ST)



Downtown McKinney Block A&B
McKinney, TX



Color Elevations



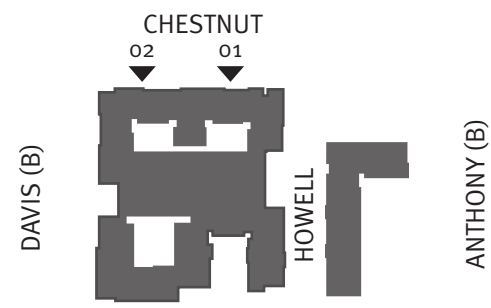
08.05.2016 2015034.00 ad

Copyright © JHP 2016
 Not for Regulatory Approval, Permit or Construction: J. Mark Wolf, AIA
 Registered Architect of State of Texas, Registration No. 9129

COLOR KEY

- 1 Heron Plume SW 6070 Cementitious Panel
- 2 Wool Skein SW 6148 Cementitious Panel
- 3 Mindful Gray SW 7016 Cementitious Panel
- 4 Porpoise SW 7047 Cementitious Panel
- 5 Anonymous SW 7046 Lap Siding
- 6 Acme Cinnebar Brick
- 7 Acme Red Sunset Brick
- 8 Acme Mushroom Gray Brick
- 9 Acme Ebony Brick
- 10 PAC-CLAD Weathered Zinc Mtl. Panel
- 11 PAC-CLAD Zinc Mtl. Panel
- 12 Pre-Finished Dark Bronze Mtl.
- 13 Cast Stone Band

NOTE:
 1) ALL MATERIALS AND COLORS TO RETURN TO AN INSIDE CORNER.
 2) ALL VINYL WINDOWS TO BE WHITE.



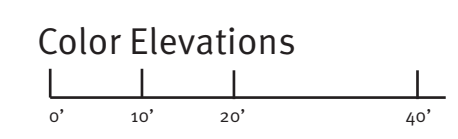
01 **BLOCK A EAST ELEVATION (CHESTNUT ST)**



02 **BLOCK A EAST ELEVATION (CHESTNUT ST)**



Downtown McKinney Block A&B
 McKinney, TX



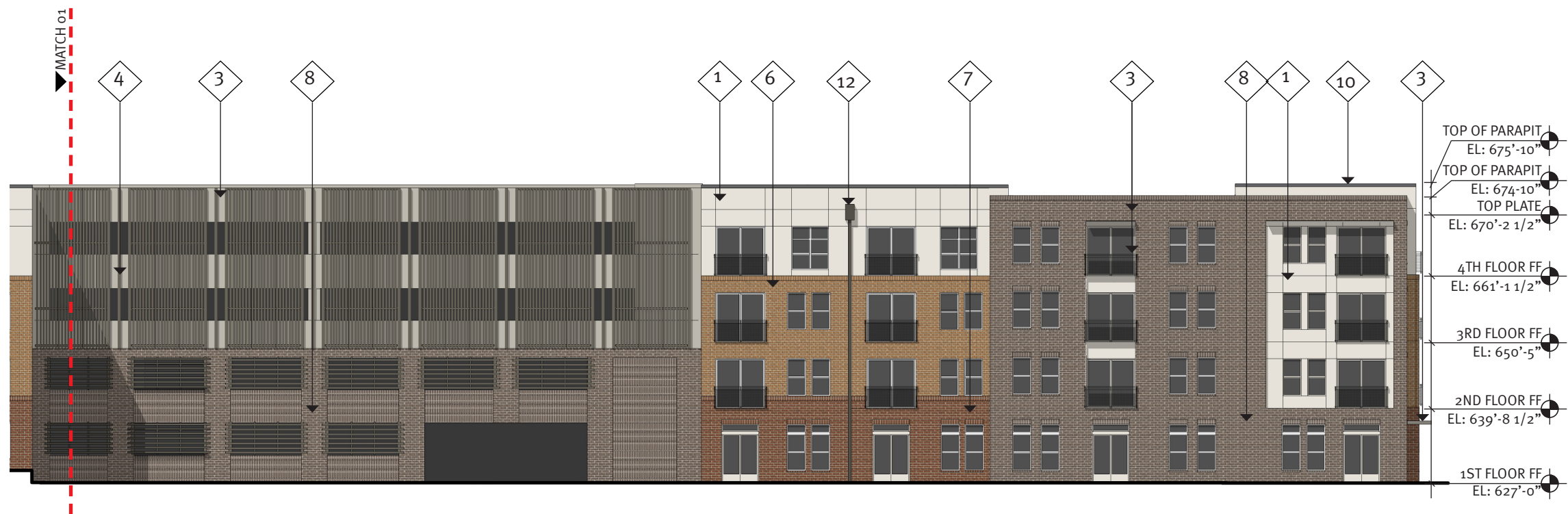
TENNESSEE (B)

| | | |
|------------|------------|----|
| 08.05.2016 | 2015034.00 | ad |
|------------|------------|----|

Copyright © JHP 2016
 Not for Regulatory Approval, Permit or Construction: J. Mark Wolf, AIA
 Registered Architect of State of Texas, Registration No. 9129



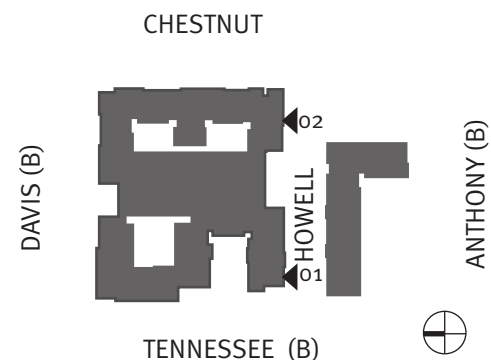
01 BLOCK A SOUTH ELEVATION (HOWELL ST)



02 BLOCK A SOUTH ELEVATION (HOWELL ST)

| COLOR KEY | |
|-----------|---|
| 1 | Heron Plume SW 6070 Cementitious Panel |
| 2 | Wool Skein SW 6148 Cementitious Panel |
| 3 | Mindful Gray SW 7016 Cementitious Panel |
| 4 | Porpoise SW 7047 Cementitious Panel |
| 5 | Anonymous SW 7046 Lap Siding |
| 6 | Acme Cinnebar Brick |
| 7 | Acme Red Sunset Brick |
| 8 | Acme Mushroom Gray Brick |
| 9 | Acme Ebony Brick |
| 10 | PAC-CLAD Weathered Zinc Mtl. Panel |
| 11 | PAC-CLAD Zinc Mtl. Panel |
| 12 | Pre-Finished Dark Bronze Mtl. |
| 13 | Cast Stone Band |

NOTE:
 1) ALL MATERIALS AND COLORS TO RETURN TO AN INSIDE CORNER.
 2) ALL VINYL WINDOWS TO BE WHITE.





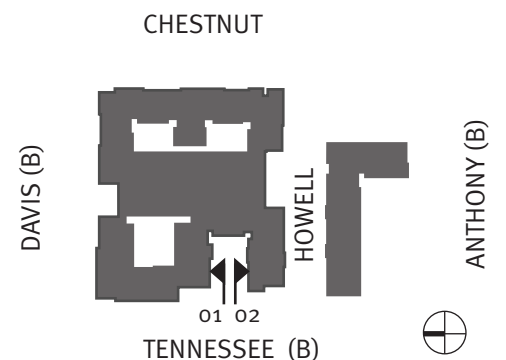
01 BLOCK A SOUTH POOL COURTYARD ELEVATION



02 BLOCK A NORTH POOL COURTYARD ELEVATION

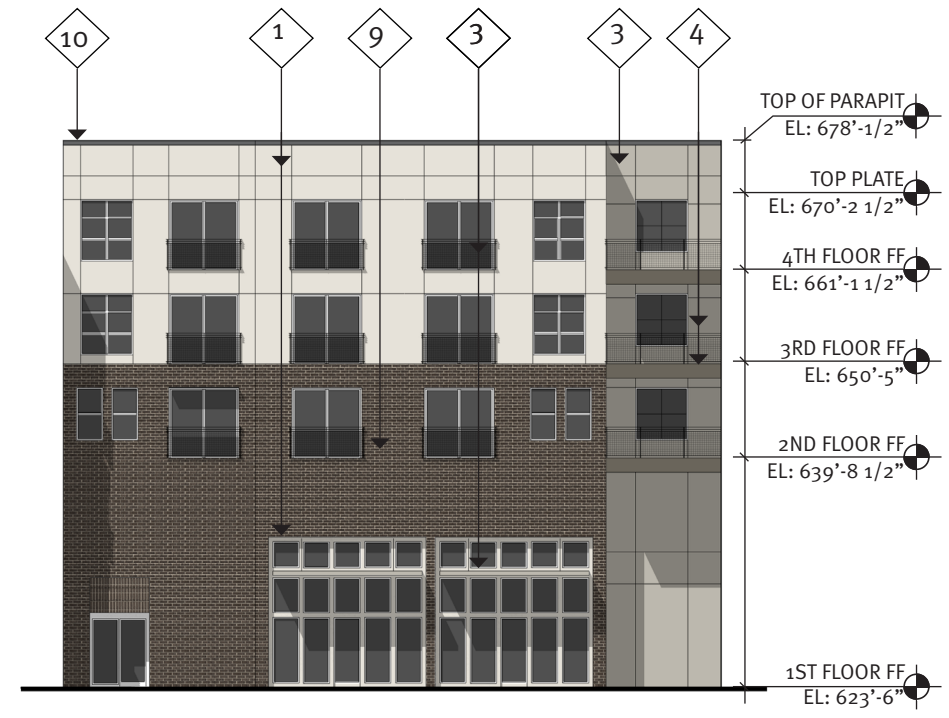
| COLOR KEY | |
|-----------|---|
| 1 | Heron Plume SW 6070 Cementitious Panel |
| 2 | Wool Skein SW 6148 Cementitious Panel |
| 3 | Mindful Gray SW 7016 Cementitious Panel |
| 4 | Porpoise SW 7047 Cementitious Panel |
| 5 | Anonymous SW 7046 Lap Siding |
| 6 | Acme Cinnebar Brick |
| 7 | Acme Red Sunset Brick |
| 8 | Acme Mushroom Gray Brick |
| 9 | Acme Ebony Brick |
| 10 | PAC-CLAD Weathered Zinc Mtl. Panel |
| 11 | PAC-CLAD Zinc Mtl. Panel |
| 12 | Pre-Finished Dark Bronze Mtl. |
| 13 | Cast Stone Band |

NOTE:
 1) ALL MATERIALS AND COLORS TO RETURN TO AN INSIDE CORNER.
 2) ALL VINYL WINDOWS TO BE WHITE.





01 BLOCK A SOUTH COURTYARD A ELEVATION



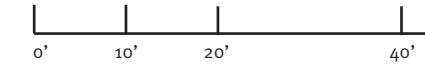
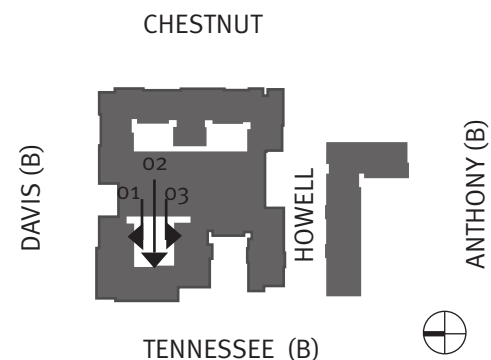
02 BLOCK A EAST COURTYARD A ELEVATION

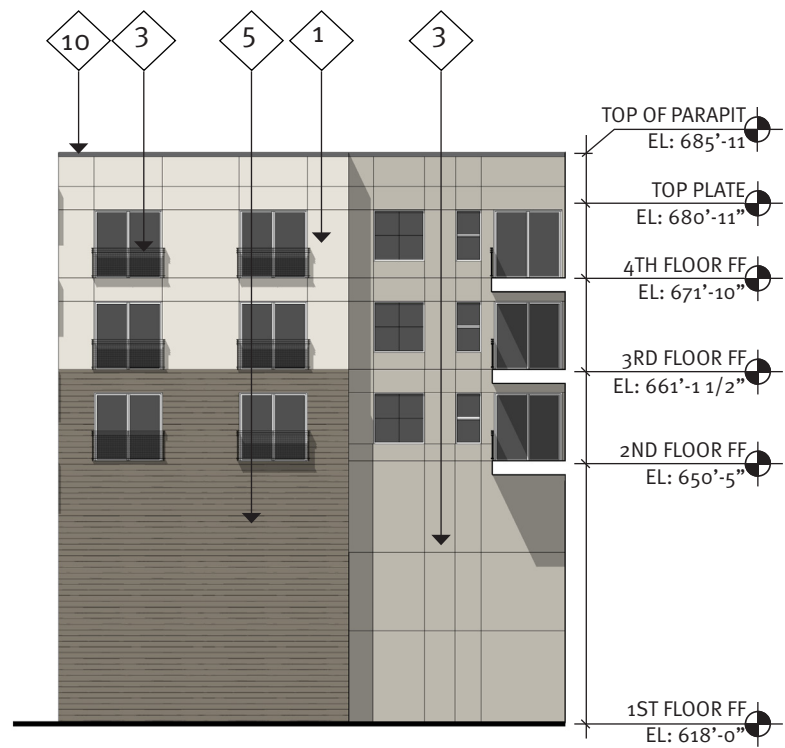


03 BLOCK A NORTH COURTYARD A ELEVATION

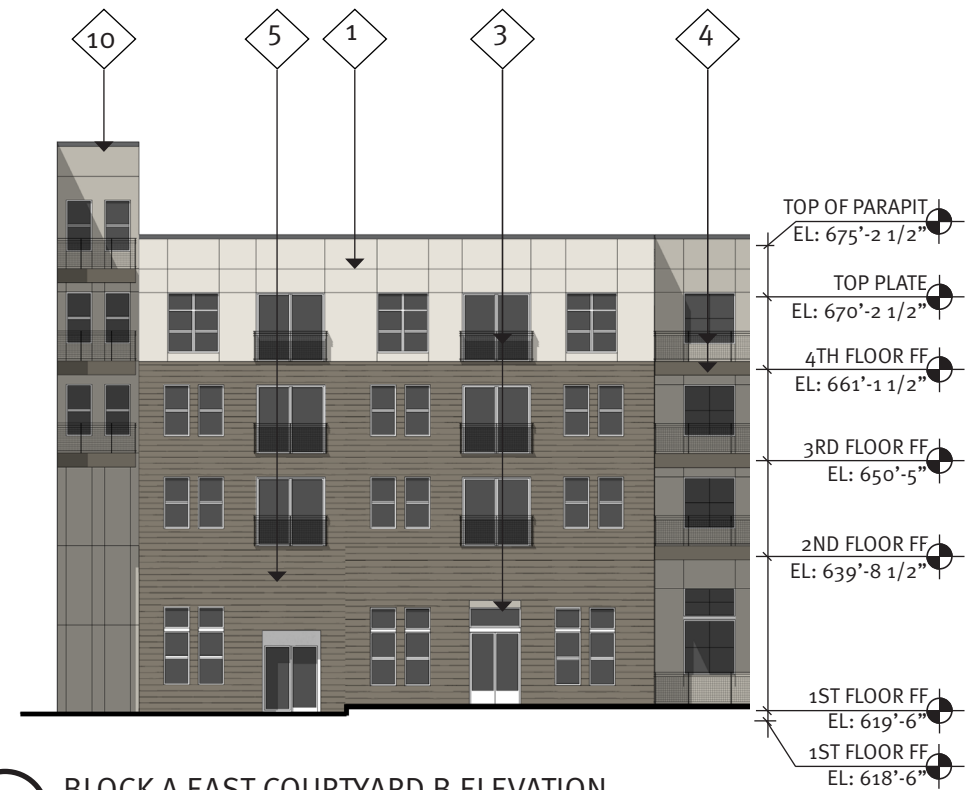
| COLOR KEY | |
|-----------|---|
| 1 | Heron Plume SW 6070 Cementitious Panel |
| 2 | Wool Skein SW 6148 Cementitious Panel |
| 3 | Mindful Gray SW 7016 Cementitious Panel |
| 4 | Porpoise SW 7047 Cementitious Panel |
| 5 | Anonymous SW 7046 Lap Siding |
| 6 | Acme Cinnebar Brick |
| 7 | Acme Red Sunset Brick |
| 8 | Acme Mushroom Gray Brick |
| 9 | Acme Ebony Brick |
| 10 | PAC-CLAD Weathered Zinc Mtl. Panel |
| 11 | PAC-CLAD Zinc Mtl. Panel |
| 12 | Pre-Finished Dark Bronze Mtl. |
| 13 | Cast Stone Band |

NOTE:
 1) ALL MATERIALS AND COLORS TO RETURN TO AN INSIDE CORNER.
 2) ALL VINYL WINDOWS TO BE WHITE.

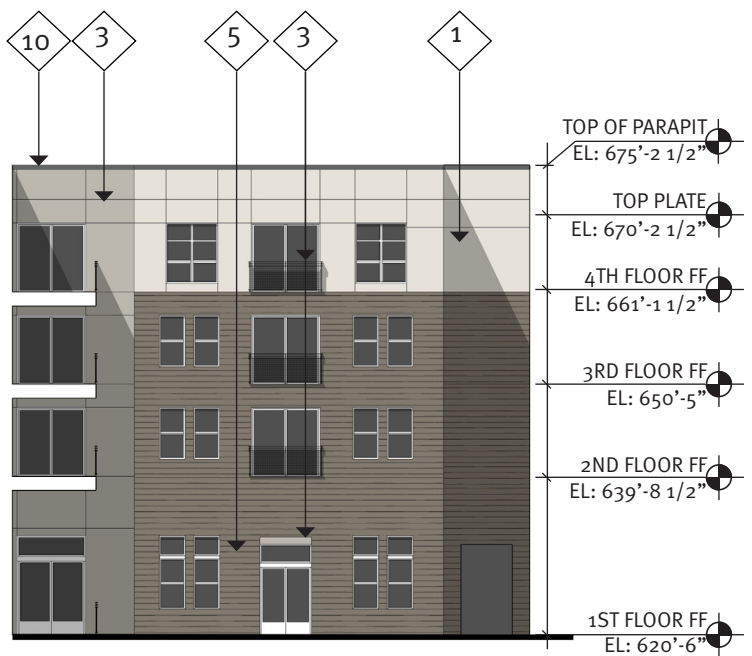




01 BLOCK A SOUTH COURTYARD B ELEVATION



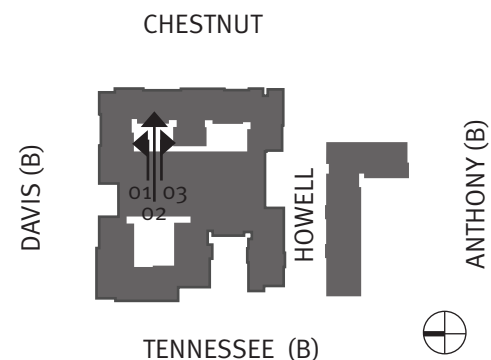
02 BLOCK A EAST COURTYARD B ELEVATION



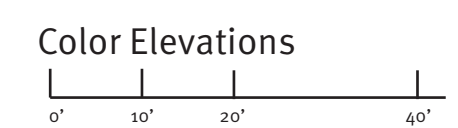
03 BLOCK A NORTH COURTYARD B ELEVATION

| COLOR KEY | |
|-----------|---|
| 1 | Heron Plume SW 6070 Cementitious Panel |
| 2 | Wool Skein SW 6148 Cementitious Panel |
| 3 | Mindful Gray SW 7016 Cementitious Panel |
| 4 | Porpoise SW 7047 Cementitious Panel |
| 5 | Anonymous SW 7046 Lap Siding |
| 6 | Acme Cinnebar Brick |
| 7 | Acme Red Sunset Brick |
| 8 | Acme Mushroom Gray Brick |
| 9 | Acme Ebony Brick |
| 10 | PAC-CLAD Weathered Zinc Mtl. Panel |
| 11 | PAC-CLAD Zinc Mtl. Panel |
| 12 | Pre-Finished Dark Bronze Mtl. |
| 13 | Cast Stone Band |

NOTE:
 1) ALL MATERIALS AND COLORS TO RETURN TO AN INSIDE CORNER.
 2) ALL VINYL WINDOWS TO BE WHITE.

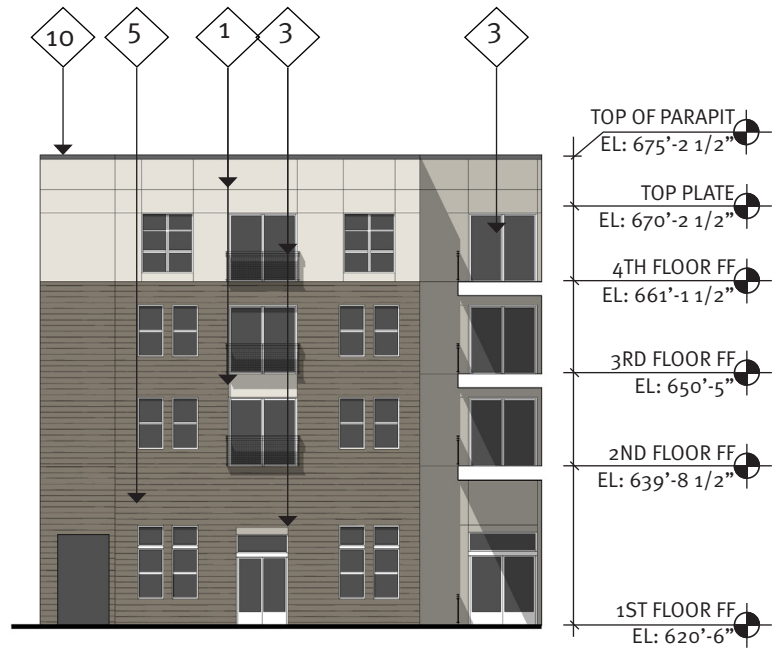


Downtown McKinney Block A&B
 McKinney, TX

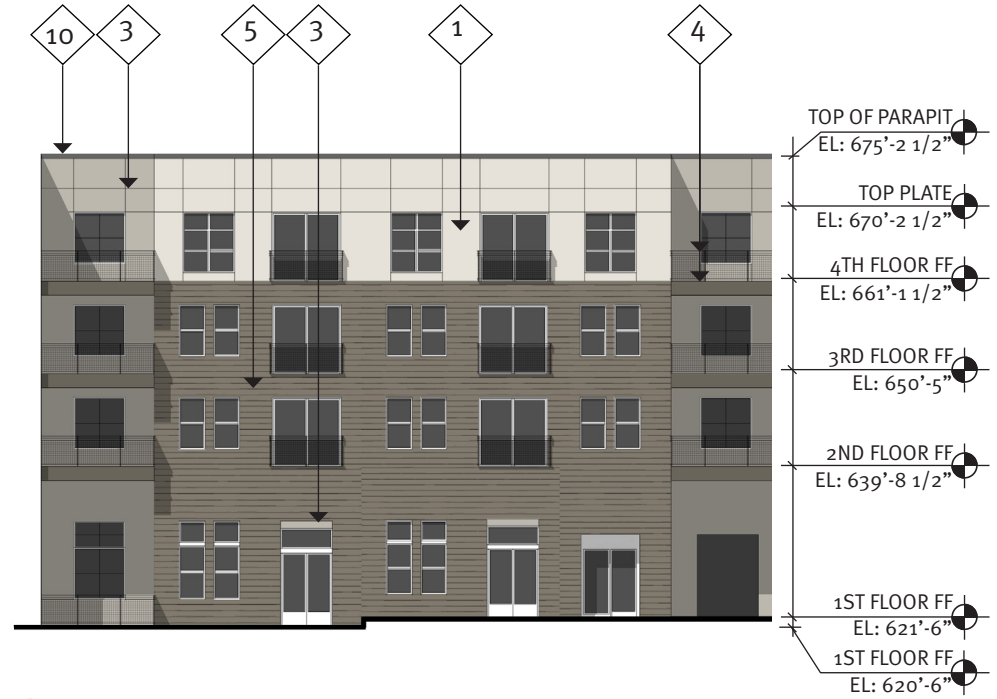


08.05.2016 2015034.00 ad

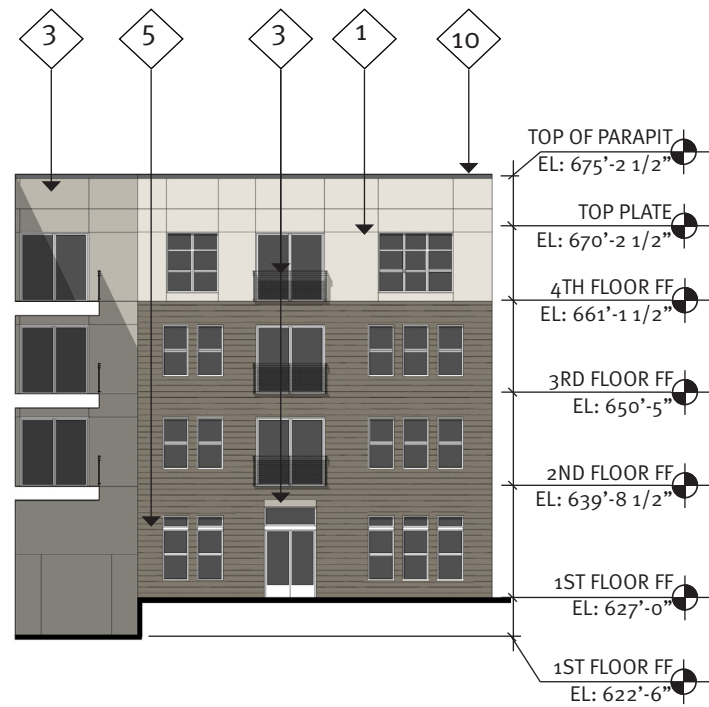
Copyright © JHP 2016
 Not for Regulatory Approval, Permit or Construction: J. Mark Wolf, AIA
 Registered Architect of State of Texas, Registration No. 9129



01 BLOCK A SOUTH COURTYARD C ELEVATION



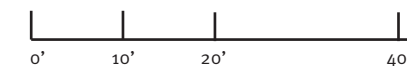
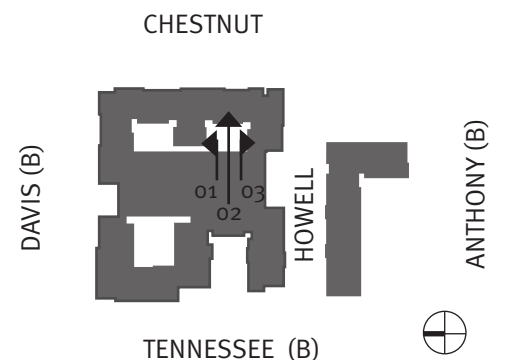
02 BLOCK A WEST COURTYARD C ELEVATION



03 BLOCK A NORTH COURTYARD C ELEVATION

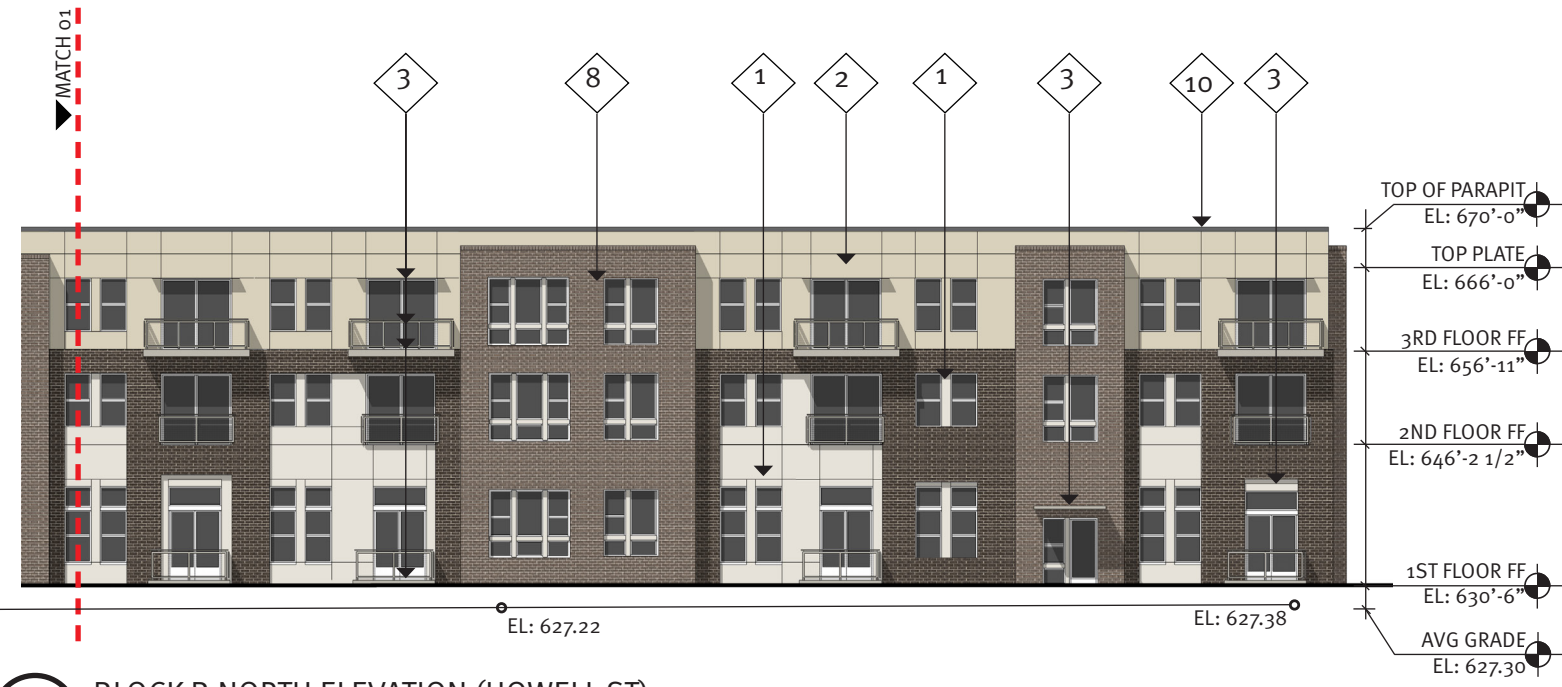
| COLOR KEY | |
|-----------|---|
| 1 | Heron Plume SW 6070 Cementitious Panel |
| 2 | Wool Skein SW 6148 Cementitious Panel |
| 3 | Mindful Gray SW 7016 Cementitious Panel |
| 4 | Porpoise SW 7047 Cementitious Panel |
| 5 | Anonymous SW 7046 Lap Siding |
| 6 | Acme Cinnebar Brick |
| 7 | Acme Red Sunset Brick |
| 8 | Acme Mushroom Gray Brick |
| 9 | Acme Ebony Brick |
| 10 | PAC-CLAD Weathered Zinc Mtl. Panel |
| 11 | PAC-CLAD Zinc Mtl. Panel |
| 12 | Pre-Finished Dark Bronze Mtl. |
| 13 | Cast Stone Band |

NOTE:
 1) ALL MATERIALS AND COLORS TO RETURN TO AN INSIDE CORNER.
 2) ALL VINYL WINDOWS TO BE WHITE.





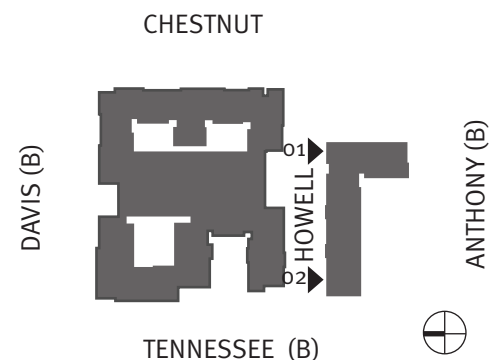
01 BLOCK B NORTH ELEVATION (HOWELL ST)



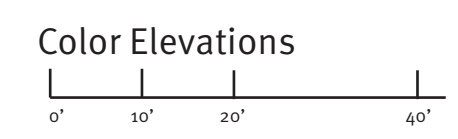
02 BLOCK B NORTH ELEVATION (HOWELL ST)

| COLOR KEY | |
|-----------|---|
| 1 | Heron Plume SW 6070 Cementitious Panel |
| 2 | Wool Skein SW 6148 Cementitious Panel |
| 3 | Mindful Gray SW 7016 Cementitious Panel |
| 4 | Porpoise SW 7047 Cementitious Panel |
| 5 | Anonymous SW 7046 Lap Siding |
| 6 | Acme Cinnebar Brick |
| 7 | Acme Red Sunset Brick |
| 8 | Acme Mushroom Gray Brick |
| 9 | Acme Ebony Brick |
| 10 | PAC-CLAD Weathered Zinc Mtl. Panel |
| 11 | PAC-CLAD Zinc Mtl. Panel |
| 12 | Pre-Finished Dark Bronze Mtl. |
| 13 | Cast Stone Band |

NOTE:
 1) ALL MATERIALS AND COLORS TO RETURN TO AN INSIDE CORNER.
 2) ALL VINYL WINDOWS TO BE WHITE.



Downtown McKinney Block A&B
 McKinney, TX



08.05.2016 2015034.00 ad

Copyright © JHP 2016
 Not for Regulatory Approval, Permit or Construction: J. Mark Wolf, AIA
 Registered Architect of State of Texas, Registration No. 9129



01 BLOCK B EAST ELEVATION (CHESTNUT ST)

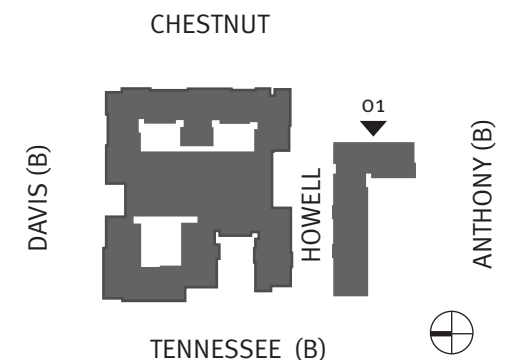
Glazing % Calculations (Detail 01)

| | Gross Sqft | Glazing Sqft | % Total | % Required |
|--------|------------|--------------|---------|------------|
| Facade | 5227 Sqft | 1858 Sqft | 35% | 30% |

COLOR KEY

- 1 Heron Plume SW 6070 Cementitious Panel
- 2 Wool Skein SW 6148 Cementitious Panel
- 3 Mindful Gray SW 7016 Cementitious Panel
- 4 Porpoise SW 7047 Cementitious Panel
- 5 Anonymous SW 7046 Lap Siding
- 6 Acme Cinnebar Brick
- 7 Acme Red Sunset Brick
- 8 Acme Mushroom Gray Brick
- 9 Acme Ebony Brick
- 10 PAC-CLAD Weathered Zinc Mtl. Panel
- 11 PAC-CLAD Zinc Mtl. Panel
- 12 Pre-Finished Dark Bronze Mtl.
- 13 Cast Stone Band

NOTE:
 1) ALL MATERIALS AND COLORS TO RETURN TO AN INSIDE CORNER.
 2) ALL VINYL WINDOWS TO BE WHITE.



Downtown McKinney Block A&B
 McKinney, TX

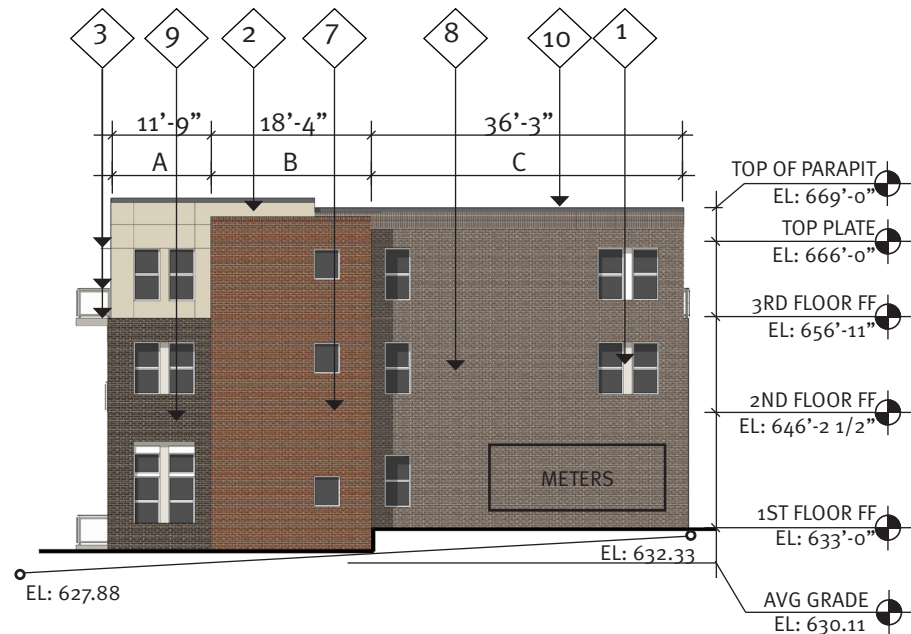


Color Elevations

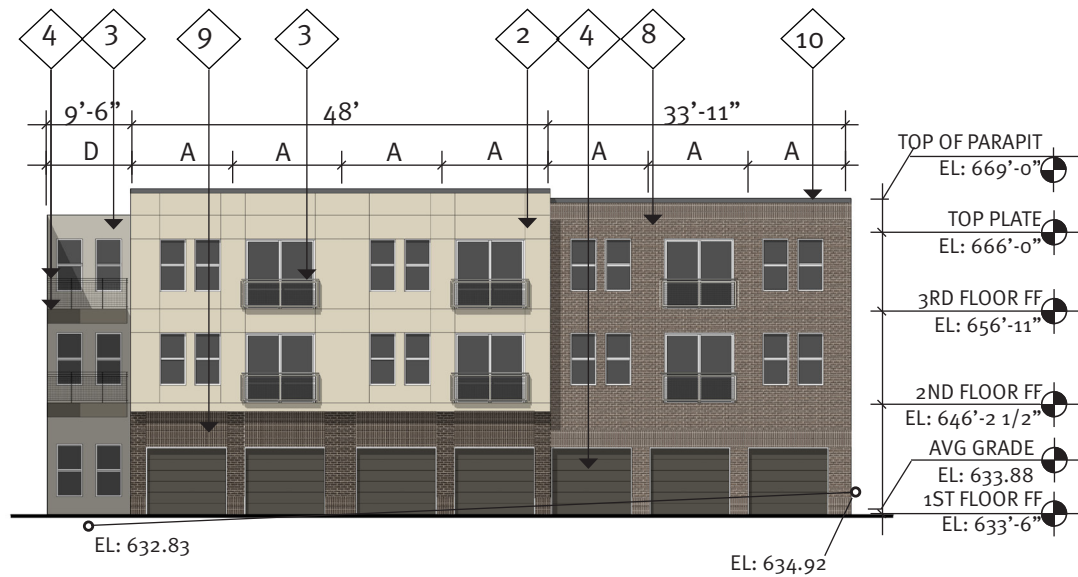


08.05.2016 2015034.00 ad

Copyright © JHP 2016
 Not for Regulatory Approval, Permit or Construction: J. Mark Wolf, AIA
 Registered Architect of State of Texas, Registration No. 9129



01 BLOCK B WEST ELEVATION (TENNESSEE ST)



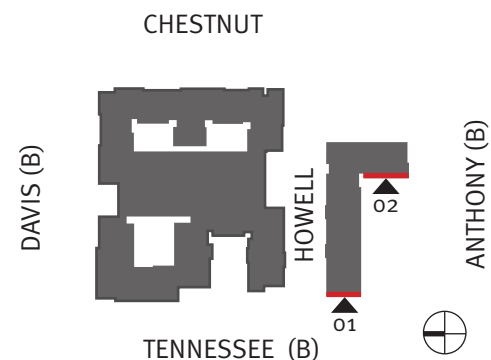
02 BLOCK B WEST ELEVATION (TENNESSEE ST)

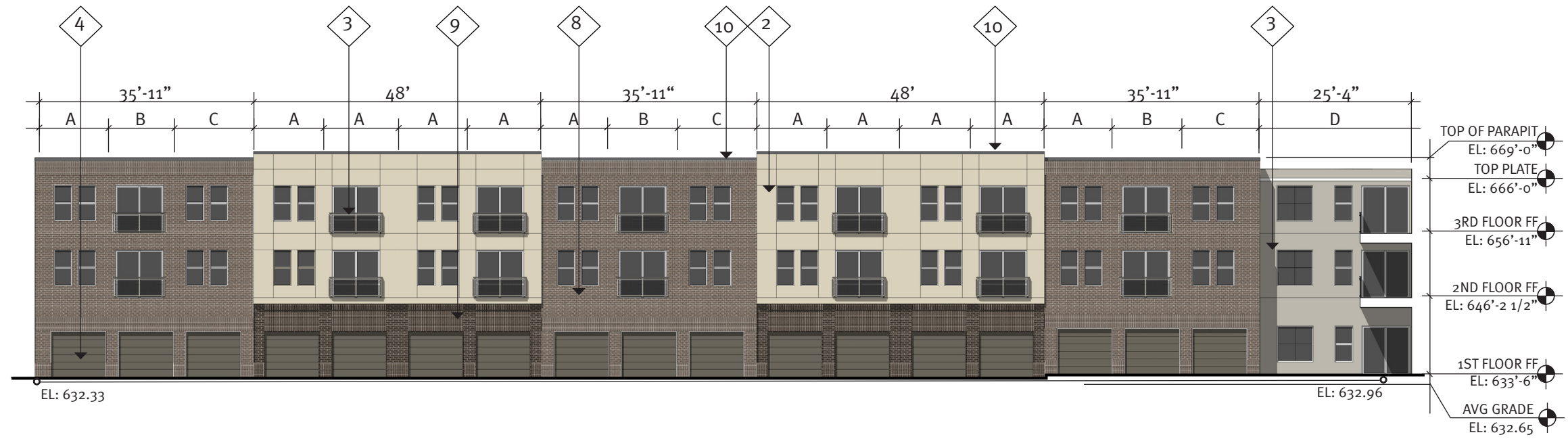
COLOR KEY

- 1 Heron Plume SW 6070 Cementitious Panel
- 2 Wool Skein SW 6148 Cementitious Panel
- 3 Mindful Gray SW 7016 Cementitious Panel
- 4 Porpoise SW 7047 Cementitious Panel
- 5 Anonymous SW 7046 Lap Siding
- 6 Acme Cinnebar Brick
- 7 Acme Red Sunset Brick
- 8 Acme Mushroom Gray Brick
- 9 Acme Ebony Brick
- 10 PAC-CLAD Weathered Zinc Mtl. Panel
- 11 PAC-CLAD Zinc Mtl. Panel
- 12 Pre-Finished Dark Bronze Mtl.
- 13 Cast Stone Band

NOTE:
 1) ALL MATERIALS AND COLORS TO RETURN TO AN INSIDE CORNER.
 2) ALL VINYL WINDOWS TO BE WHITE.

| | % Total | % Required |
|--------------------|---------|-------------------|
| Brick | 74% | 80% |
| Cementitious Panel | 26% | Not to Exceed 20% |
| Metal Panel | 0% | |



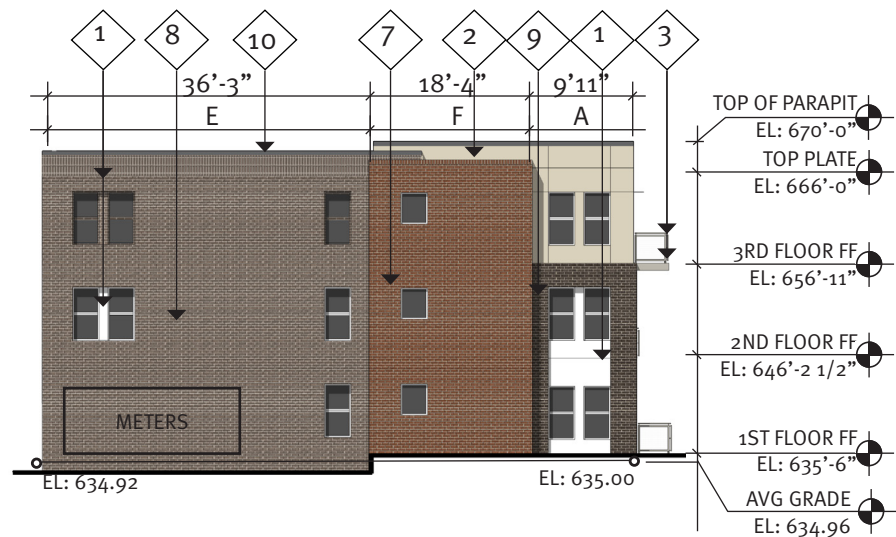


COLOR KEY

| | |
|----|---|
| 1 | Heron Plume SW 6070 Cementitious Panel |
| 2 | Wool Skein SW 6148 Cementitious Panel |
| 3 | Mindful Gray SW 7016 Cementitious Panel |
| 4 | Porpoise SW 7047 Cementitious Panel |
| 5 | Anonymous SW 7046 Lap Siding |
| 6 | Acme Cinnebar Brick |
| 7 | Acme Red Sunset Brick |
| 8 | Acme Mushroom Gray Brick |
| 9 | Acme Ebony Brick |
| 10 | PAC-CLAD Weathered Zinc Mtl. Panel |
| 11 | PAC-CLAD Zinc Mtl. Panel |
| 12 | Pre-Finished Dark Bronze Mtl. |
| 13 | Cast Stone Band |

NOTE:
 1) ALL MATERIALS AND COLORS TO RETURN TO AN INSIDE CORNER.
 2) ALL VINYL WINDOWS TO BE WHITE.

01 BLOCK B SOUTH ELEVATION (ANTHONY ST)



Material % Calculations (Detail 01 + 02)

| | % Total | % Required |
|--------------------|---------|-------------------|
| Brick | 71% | 80% |
| Cementitious Panel | 29% | Not to Exceed 20% |
| Metal Panel | 0% | Not to Exceed 20% |

02 BLOCK B SOUTH ELEVATION (ANTHONY ST)

