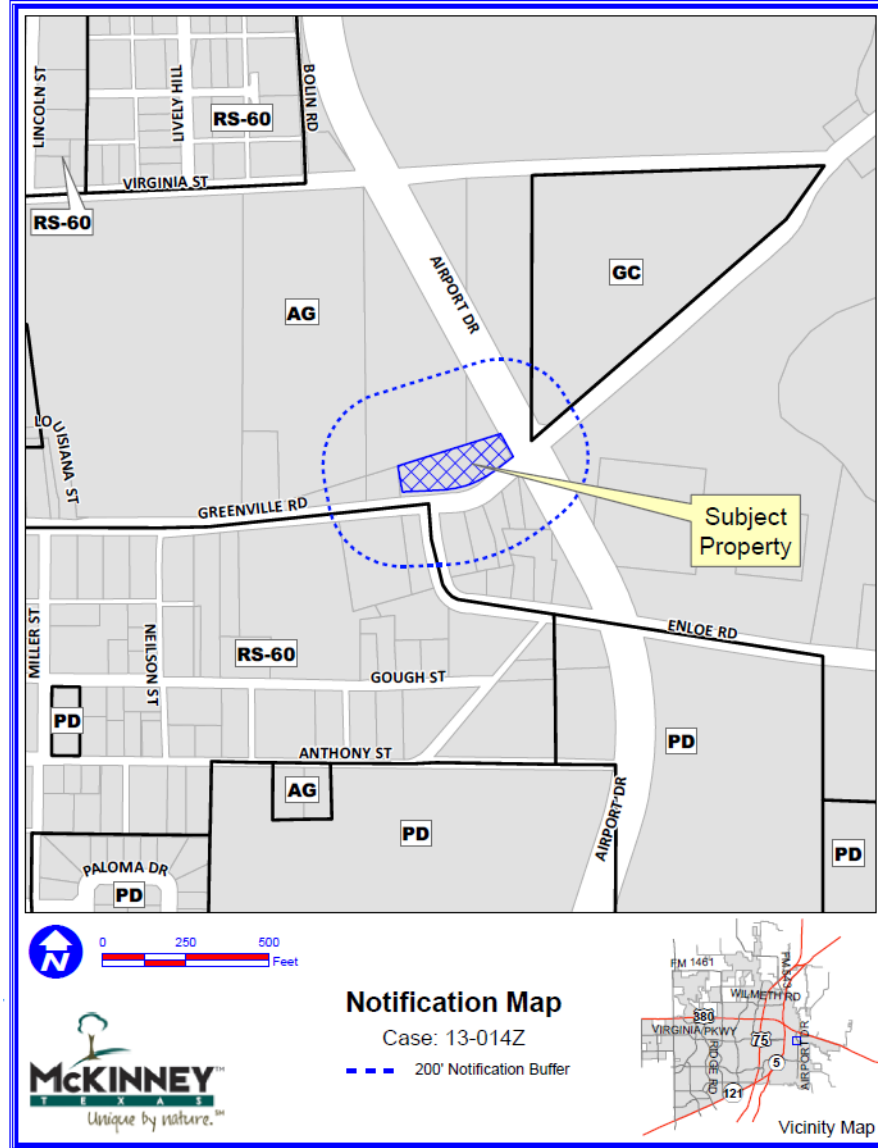


**Case No. 13-014Z**  
**Heritage Christian Church**  
City of McKinney  
Planning

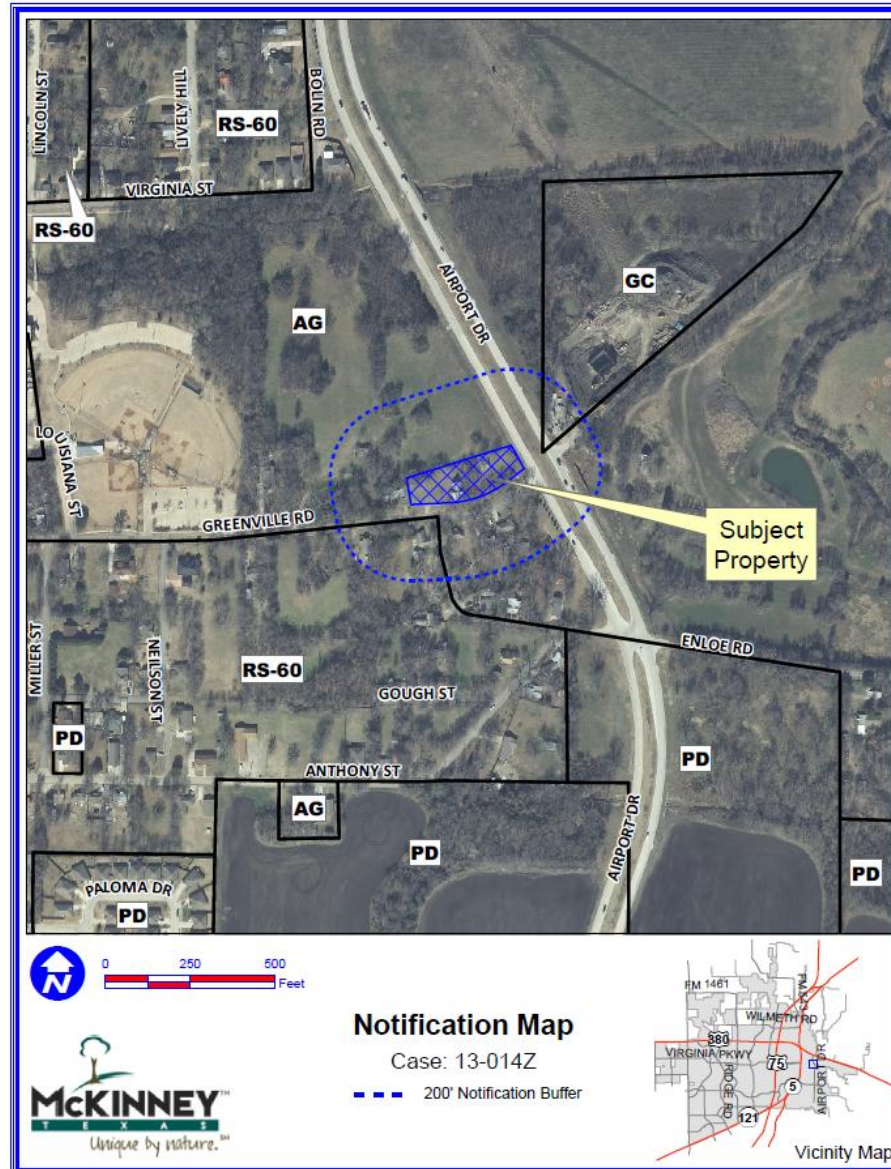


# Location Map



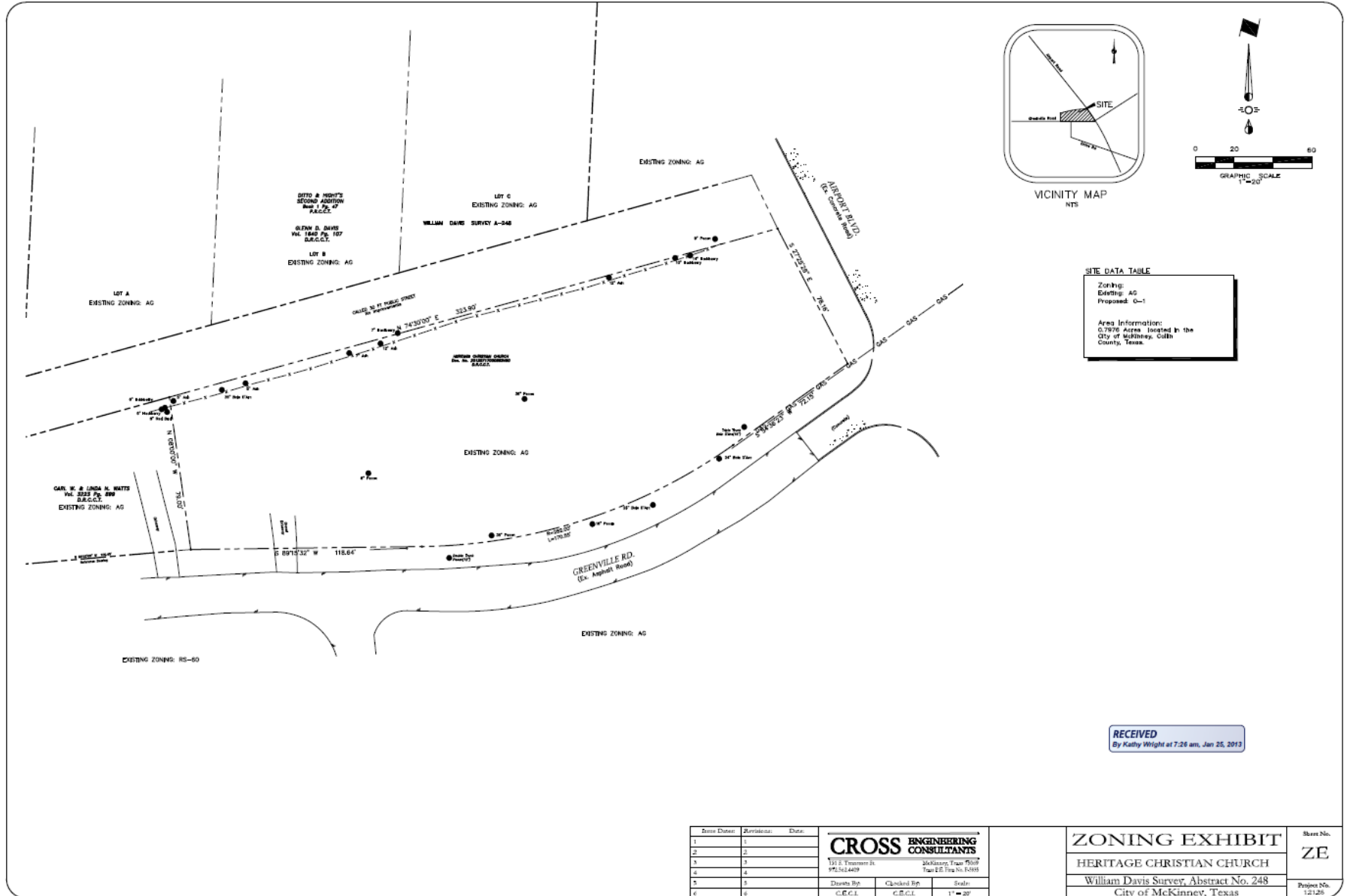
DISCLAIMER: This map and information contained in it were developed exclusively for use by the City of McKinney. Any use or reliance on this map by anyone else is at that party's risk and without liability to the City of McKinney, its officials or employees for any discrepancies, errors, or variances which may exist.

# Aerial Exhibit



DISCLAIMER: This map and information contained in it were developed exclusively for use by the City of McKinney. Any use or reliance on this map by anyone else is at that party's risk and without liability to the City of McKinney, its officials or employees for any discrepancies, errors, or variances which may exist.

# Proposed Zoning Exhibit



**RECEIVED**  
By Kathy Wright at 7:26 am, Jan 25, 2013

Date	Revision	Drawn
1	1	
2	2	
3	3	
4	4	
5	5	
6	6	

**CROSS ENGINEERING CONSULTANTS**  
 1111 S. Truman St. McKinney, Texas 75069  
 P.O. Box 48097  
 Dallas, TX 75248  
 Scale: 1" = 20'

**ZONING EXHIBIT**  
 HERITAGE CHRISTIAN CHURCH  
 William Davis Survey, Abstract No. 248  
 City of McKinney, Texas

Sheet No. **ZE**  
 Project No. 12120



# Staff Recommendation

Staff recommends **approval** as outlined in the Staff Report.