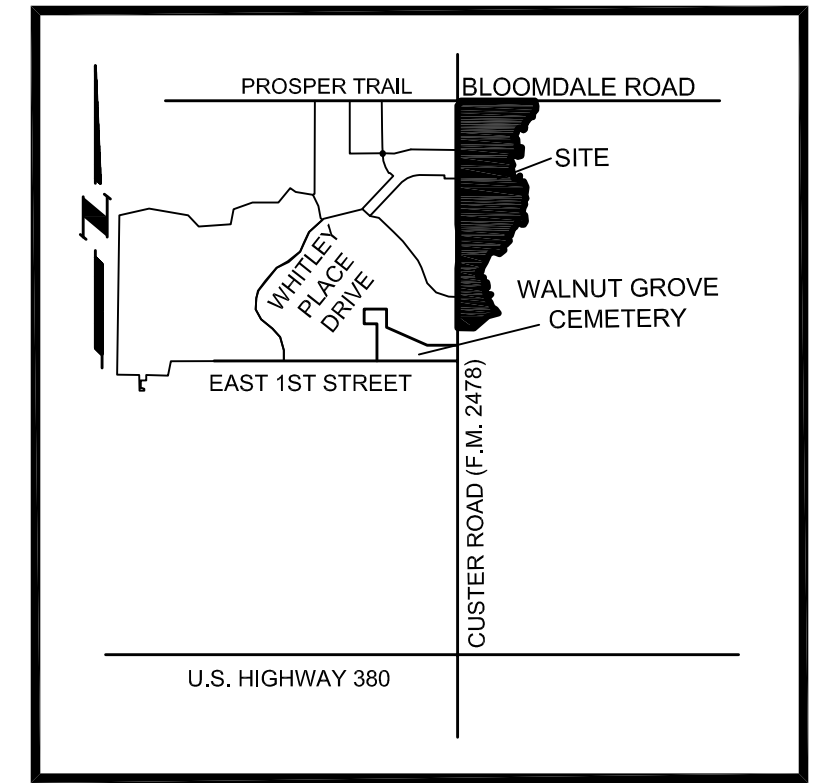


# Exhibit D



LOCATION MAP  
N.T.S.

**LEGAL DESCRIPTION**

BEING a parcel of land located in Collin County, Texas, a part of the John Crutchfield Survey, Abstract Number 206, and being all of that called 66.609 acre tract of land described as Tract 2 in a special warranty to Clark Partners, L.P. as recorded in Volume 5763, Page 1199 in the Official Public Records of Real Property of Collin County, Texas, and being more particularly described by metes and bounds as follows:

BEGINNING at the northwest corner of said Tract 2, said point being the intersection of the east right-of-way line of Farm-to-Market Highway Number 2478 with the centerline of Collin County Road Number 123;

THENCE South 89 degrees 27 minutes 42 seconds East, 1174.84 feet along the north line of said Tract 2 and along the centerline of Collin County Road Number 123 to the northeast corner of said Tract 2;

THENCE along the east line of said Tract 2 and along the center of a small branch of Wilson Creek as follows:

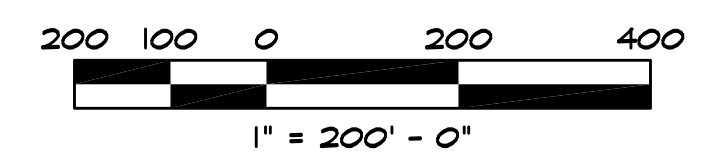
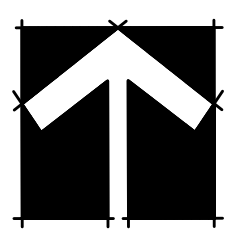
South 13 degrees 11 minutes 41 seconds East, 90.13 feet to a point for corner;  
 South 04 degrees 49 minutes 11 seconds West, 60.20 feet to a point for corner;  
 South 46 degrees 28 minutes 03 seconds West, 64.61 feet to a point for corner;  
 South 06 degrees 22 minutes 18 seconds West, 68.44 feet to a point for corner;  
 North 54 degrees 47 minutes 25 seconds West, 17.32 feet to a point for corner;  
 South 50 degrees 27 minutes 12 seconds West, 32.55 feet to a point for corner;  
 North 89 degrees 04 minutes 48 seconds West, 24.97 feet to a point for corner;  
 South 03 degrees 07 minutes 10 seconds East, 25.08 feet to a point for corner;  
 South 40 degrees 47 minutes 35 seconds West, 51.43 feet to a point for corner;  
 North 53 degrees 39 minutes 31 seconds West, 17.37 feet to a point for corner;  
 South 40 degrees 11 minutes 24 seconds West, 19.72 feet to a point for corner;  
 South 10 degrees 20 minutes 02 seconds East, 37.82 feet to a point for corner;  
 South 82 degrees 25 minutes 07 seconds West, 24.17 feet to a point for corner;  
 South 19 degrees 23 minutes 43 seconds East, 23.06 feet to a point for corner;  
 South 44 degrees 48 minutes 26 seconds East, 18.49 feet to a point for corner;  
 South 08 degrees 33 minutes 19 seconds West, 38.70 feet to a point for corner;  
 South 63 degrees 48 minutes 13 seconds West, 25.92 feet to a point for corner;  
 North 57 degrees 45 minutes 52 seconds West, 73.87 feet to a point for corner;  
 South 54 degrees 23 minutes 54 seconds West, 34.63 feet to a point for corner;  
 South 20 degrees 14 minutes 35 seconds West, 25.07 feet to a point for corner;  
 South 11 degrees 29 minutes 34 seconds West, 32.96 feet to a point for corner;  
 South 24 degrees 57 minutes 06 seconds West, 74.94 feet to a point for corner;  
 South 72 degrees 51 minutes 22 seconds West, 31.32 feet to a point for corner;  
 South 21 degrees 40 minutes 41 seconds East, 29.00 feet to a point for corner;  
 South 89 degrees 44 minutes 16 seconds East, 55.71 feet to a point for corner;  
 South 02 degrees 50 minutes 05 seconds East, 85.25 feet to a point for corner;  
 South 35 degrees 23 minutes 20 seconds West, 29.97 feet to a point for corner;  
 South 16 degrees 19 minutes 54 seconds East, 43.57 feet to a point for corner;  
 South 42 degrees 47 minutes 37 seconds East, 45.83 feet to a point for corner;  
 South 62 degrees 48 minutes 39 seconds East, 11.95 feet to a point for corner;  
 South 03 degrees 32 minutes 28 seconds West, 133.95 feet to a point for corner;  
 South 74 degrees 14 minutes 11 seconds West, 61.59 feet to a point for corner;  
 North 54 degrees 49 minutes 01 seconds West, 49.24 feet to a point for corner;  
 South 64 degrees 50 minutes 15 seconds West, 86.86 feet to a point for corner;  
 South 22 degrees 43 minutes 12 seconds East, 131.42 feet to a point for corner;  
 South 36 degrees 37 minutes 08 seconds West, 48.57 feet to a point for corner;  
 South 11 degrees 04 minutes 04 seconds East, 172.10 feet to a point for corner;  
 North 45 degrees 27 minutes 48 seconds East, 82.72 feet to a point for corner;  
 South 09 degrees 05 minutes 48 seconds West, 79.44 feet to a point for corner;  
 South 26 degrees 30 minutes 37 seconds East, 46.80 feet to a point for corner;  
 North 64 degrees 44 minutes 26 seconds East, 59.61 feet to a point for corner;  
 South 21 degrees 59 minutes 49 seconds East, 96.10 feet to a point for corner;  
 South 07 degrees 32 minutes 27 seconds West, 150.81 feet to a point for corner;

THENCE along the south line of said Tract 2 and along the center of Wilson Creek as follows:

South 75 degrees 58 minutes 42 seconds West, 174.49 feet to a point for corner;  
 South 49 degrees 30 minutes 51 seconds West, 293.40 feet to a point for corner;  
 North 89 degrees 03 minutes 36 seconds West, 256.81 feet to the southwest corner of said Tract 2, said point being in the east right-of-way line of Farm-to-Market Highway Number 2478;

THENCE along the west line of said Tract 2 and along the east right-of-way line of Farm-to-Market Highway Number 2478 as follows:

North 00 degrees 31 minutes 04 seconds East, 946.48 feet to a point for corner;  
 North 06 degrees 13 minutes 42 seconds East, 100.50 feet to a point for corner;  
 North 00 degrees 31 minutes 04 seconds West, 100.50 feet to a point for corner;  
 North 05 degrees 11 minutes 34 seconds West, 100.50 feet to a point for corner;  
 North 00 degrees 31 minutes 04 seconds East, 1880.06 feet to a point for corner;  
 North 45 degrees 31 minutes 41 seconds East, 70.68 feet to a point for corner;  
 North 00 degrees 31 minutes 04 seconds East, 30.00 feet to the POINT OF BEGINNING and containing 66.61 acres of land.



**ANNEXATION EXHIBIT**

**CLARK TRACT**

66.61 ACRES OUT OF THE  
JOHN CRUTCHFIELD SURVEY, ABSTRACT NUMBER 206

CITY OF MCKINNEY, COLLIN COUNTY, TEXAS

**CLARK PARTNERS, LP** OWNER/APPLICANT

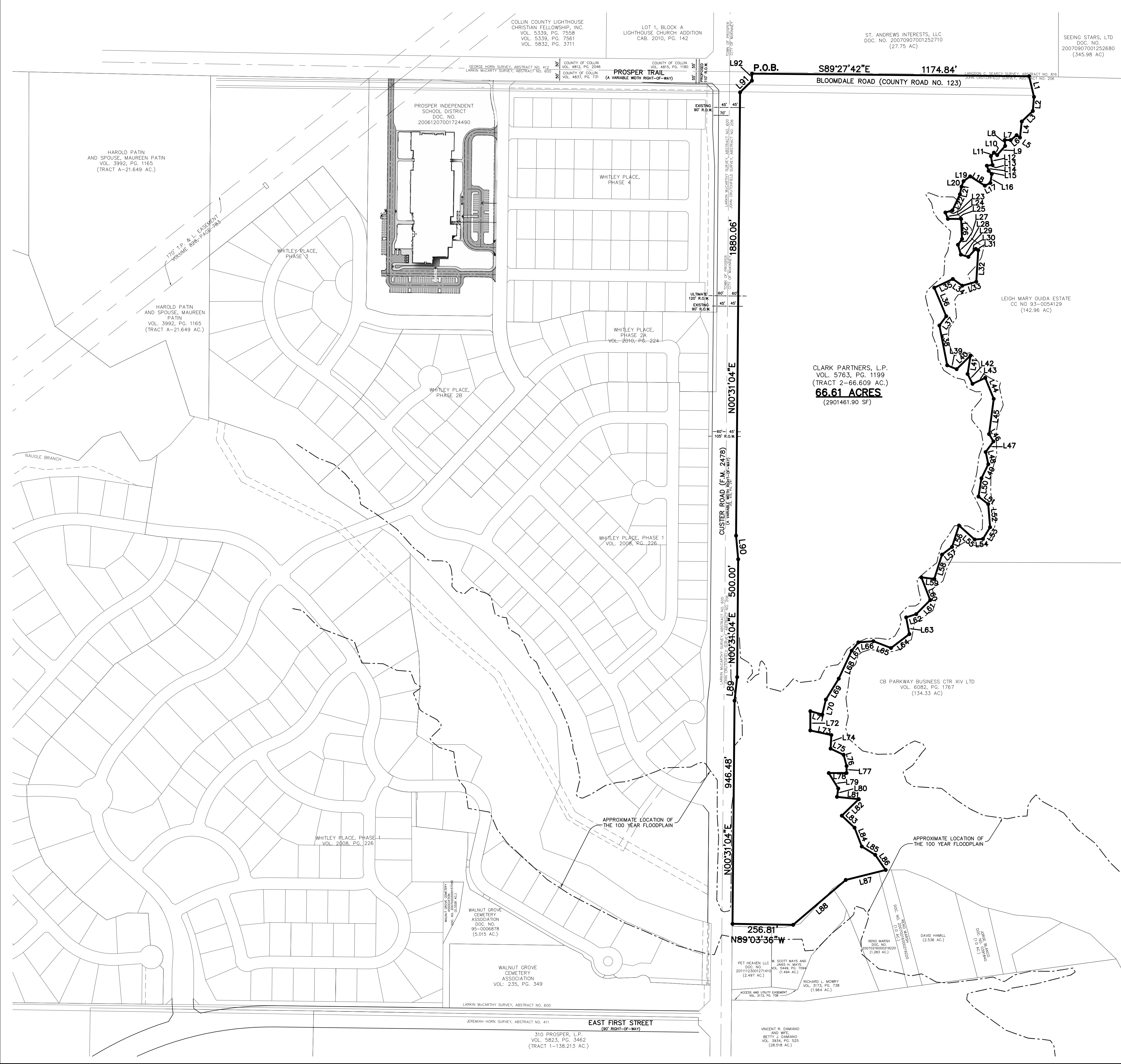
16250 Knoll Trail, Suite 210 (972) 931-8971  
 Suite 107  
 Dallas, Texas 75248  
 Contact: Dale Clark

**JBI PARTNERS, INC.** PLANNER

16301 Quorum Drive, Suite 200 B (972) 248-7676  
 Addison, Texas 75001  
 Contact: Jerry Sylo

MARCH 26, 2012

Sheet 1 of 1



Drawing: H:\Projects\WCD033.dwg -Zoning Plan.dwg Saved By: kpuhg Date: 3/26/2012 9:30 AM Plotted by: kpuhg Plot Date: 3/26/2012 9:33 AM