

# Case No. 13-031A

## The Reserve at Westridge Tract



# Location Map

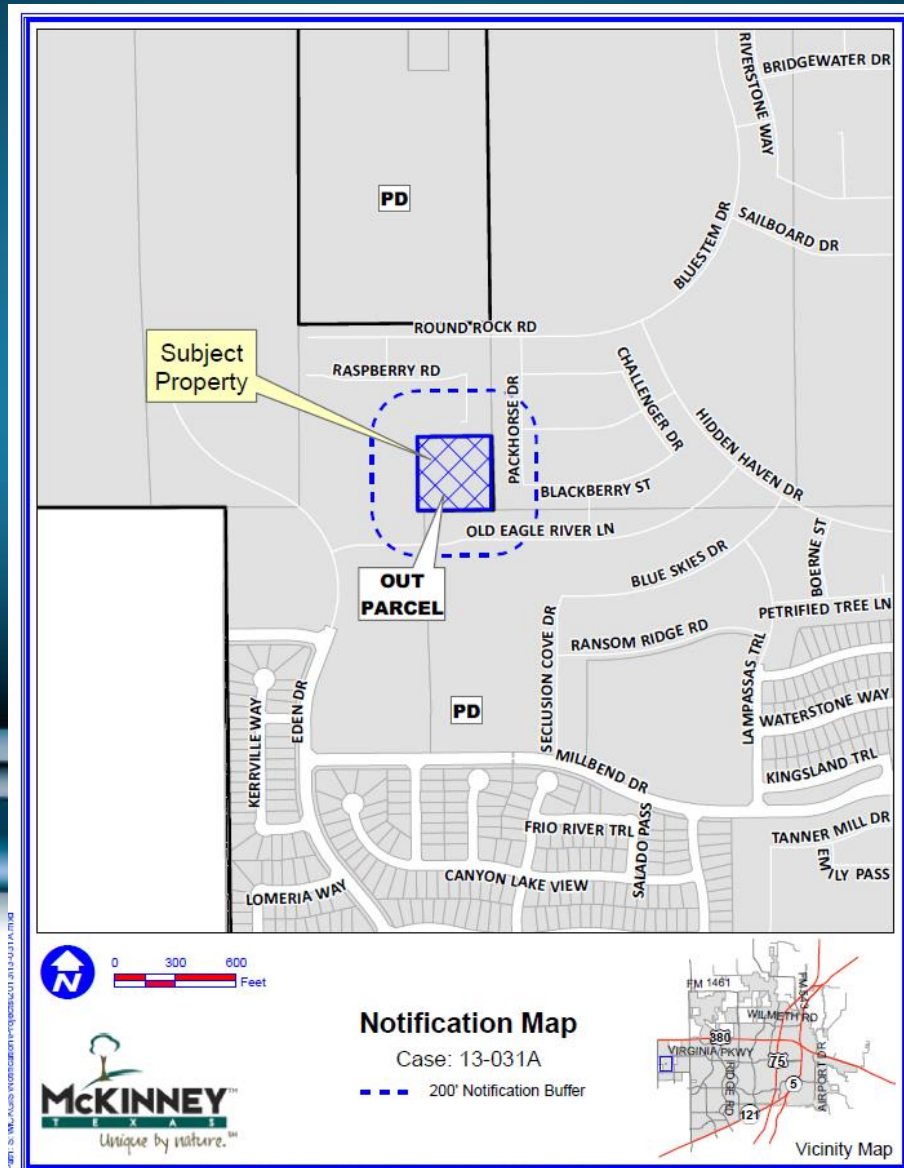


FIGURE 13-10: 200' Notification Buffer (Case: 13-031A)

DISCLAIMER: This map and information contained in it were developed exclusively for use by the City of McKinney. Any use or reliance on this map by anyone else is at that party's risk and without liability to the City of McKinney, its officials or employees for any discrepancies, errors, or variances which may exist.

# Aerial Exhibit

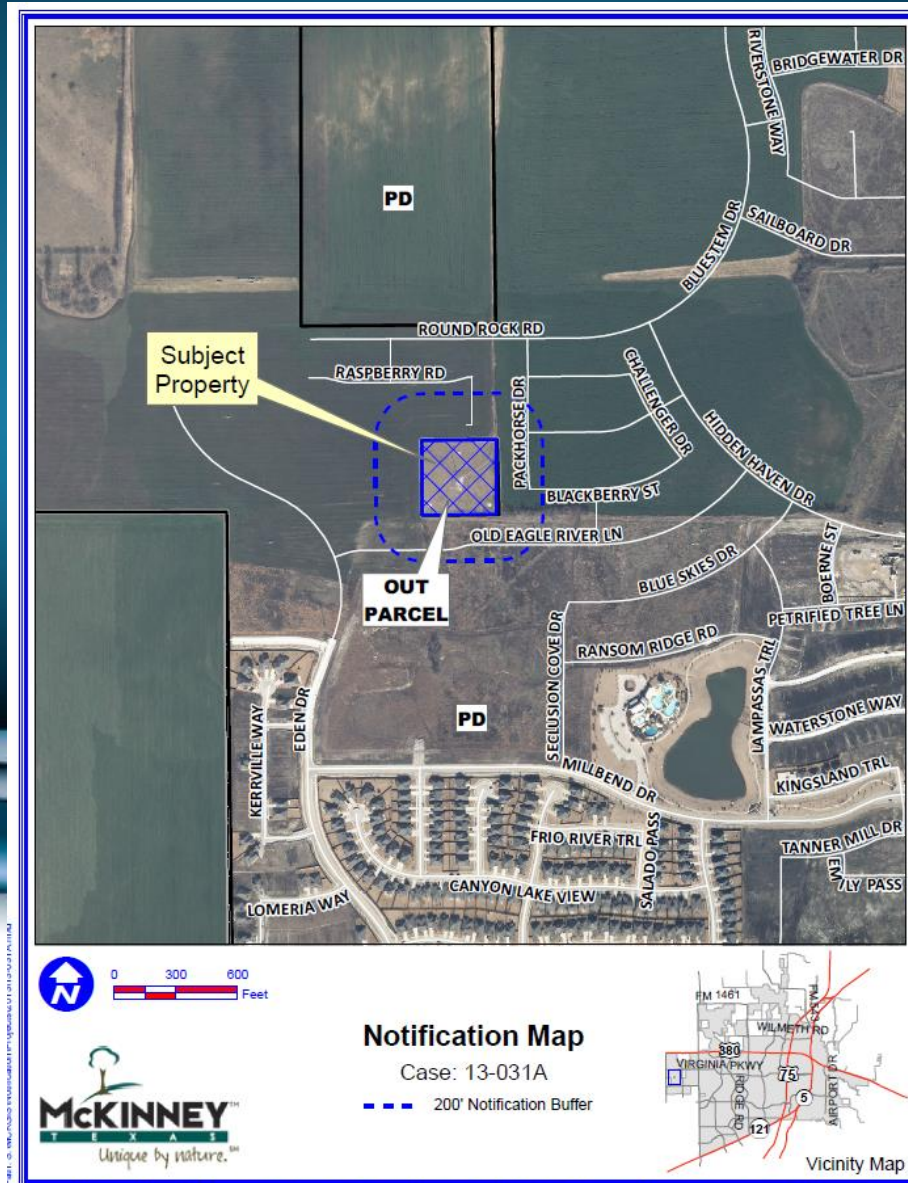


PHOTO: G. WILSON/PHOTO.COM; MAP: G. WILSON/PHOTO.COM

DISCLAIMER: This map and information contained in it were developed exclusively for use by the City of McKinney. Any use or reliance on this map by anyone else is at that party's risk and without liability to the City of McKinney, its officials or employees for any discrepancies, errors, or variances which may exist.





## **STAFF RECOMMENDATION:**

Staff recommends approval of the proposed annexation request.