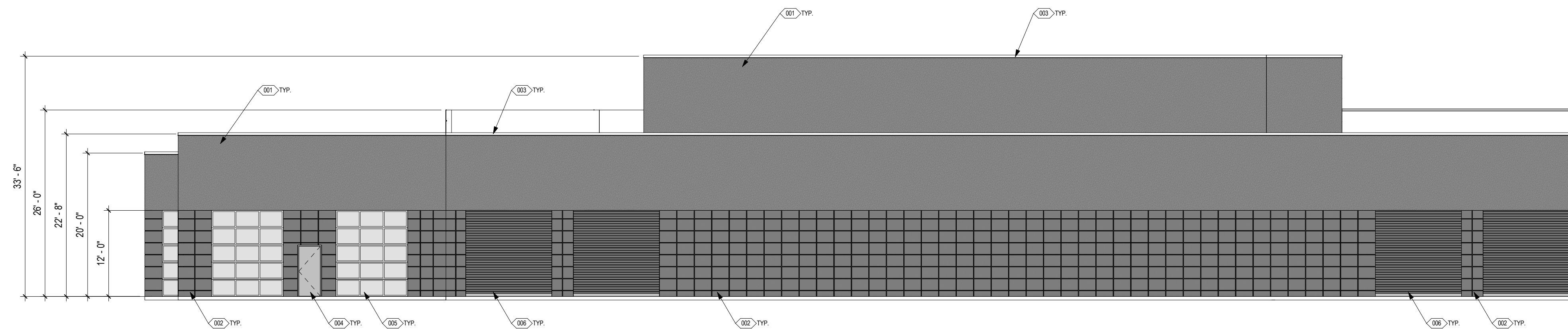


	EIFS	STONE	ACM	TOTAL
NORTH ELEVATION (SF)	3141.75	1599.89	0.00	4741.64
PERCENTAGE	66.26%	33.74%	0.00%	

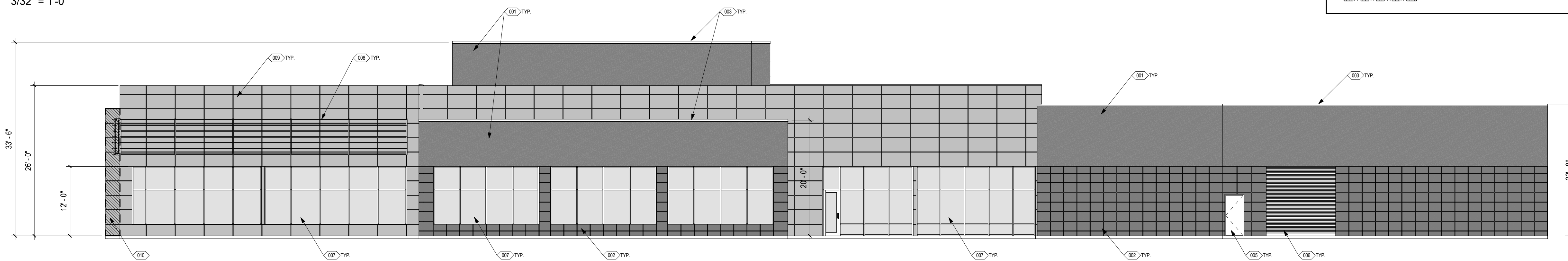


4 NORTH ELEVATION - EXISTING
3/32" = 1'-0"

NOTES - EXTERIOR ELEVATION	
001	NEW EIFS (COLOR - SILVER HALF DOLLAR - BENJAMIN MOORE)
002	NEW STONE PANEL (COLOR - ATLANTIC GREY LIMESTONE - STONE PANELS INC.)
003	NEW PARAPET CAP
004	EXISTING DOOR
005	EXISTING SECTIONAL DOOR
006	EXISTING COIL DOOR
007	EXISTING GLAZING
008	EXISTING LOUVER FASCIA
009	NEW ACM (COLOR - SUNRISE SILVER METALLIC - ALUCOBOND)
010	EXISTING ACM

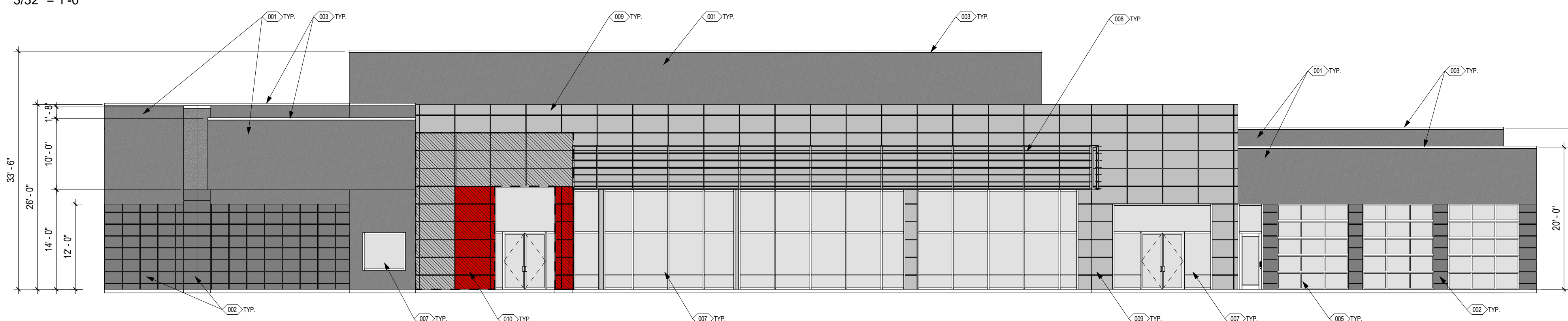
EXTERIOR FINISH LEGEND	
	ACM - SUNRISE SILVER METALLIC - ALUCOBOND
	EIFS - SILVER HALF DOLLAR - BENJAMIN MOORE
	STONE PANELS - ATLANTIC GREY LIMESTONE - STONEPANELS INC.
	EXISTING ACM

	EIFS	STONE	ACM	TOTAL
EAST ELEVATION (TOTAL SF)	1862.64	1108.65	1987.51	4958.80
PERCENTAGE	37.56%	22.36%	40.08%	



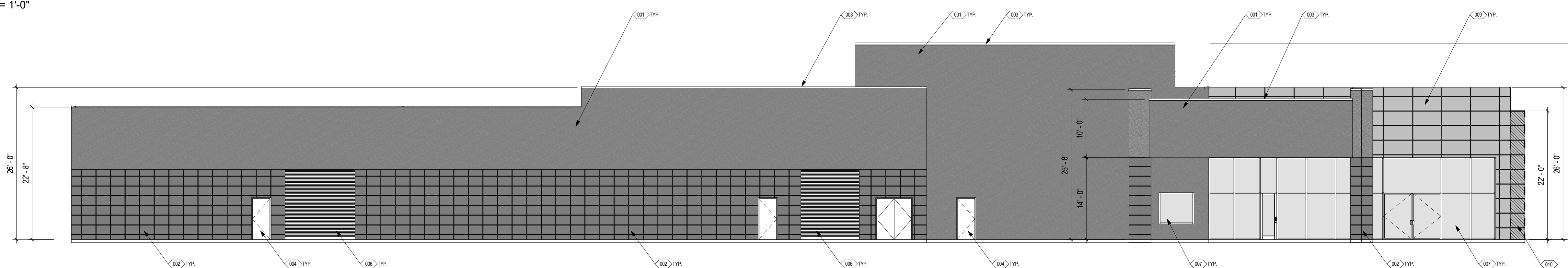
3 EAST ELEVATION - EXISTING
3/32" = 1'-0"

	EIFS	STONE	ACM	TOTAL
SOUTH ELEVATION (SF)	1850.44	521.53	1742.58	4114.55
PERCENTAGE	44.97%	12.68%	42.35%	



2 SOUTH ELEVATION - EXISTING
3/32" = 1'-0"

	EIFS	STONE	ACM	TOTAL
WEST ELEVATION (TOTAL SF)	3609.86	1508.84	422.81	5541.51
PERCENTAGE	65.14%	27.23%	7.63%	



1 WEST ELEVATION - EXISTING
3/32" = 1'-0"



McKinney Nissan - Exterior Repairs

3800 S Central Expy, McKinney, TX 75069

PROPOSED ELEVATIONS

DECEMBER 05, 2016

THIS DRAWING AND THE BIM/CAD FILE FROM WHICH IT HAS BEEN GENERATED ARE PROVIDED AS AN INSTRUMENT OF SERVICE FOR THIS PROJECT. THESE DOCUMENTS ARE THE SOLE PROPERTY OF GOREE ARCHITECTS. ANY USE OF THESE DOCUMENTS, DATA AND DESIGNS FOR PURPOSES OTHER THAN THOSE ASSOCIATED WITH THIS PROJECT WITHOUT THE EXPRESSED, WRITTEN PERMISSION OF GOREE ARCHITECTS IS PROHIBITED.