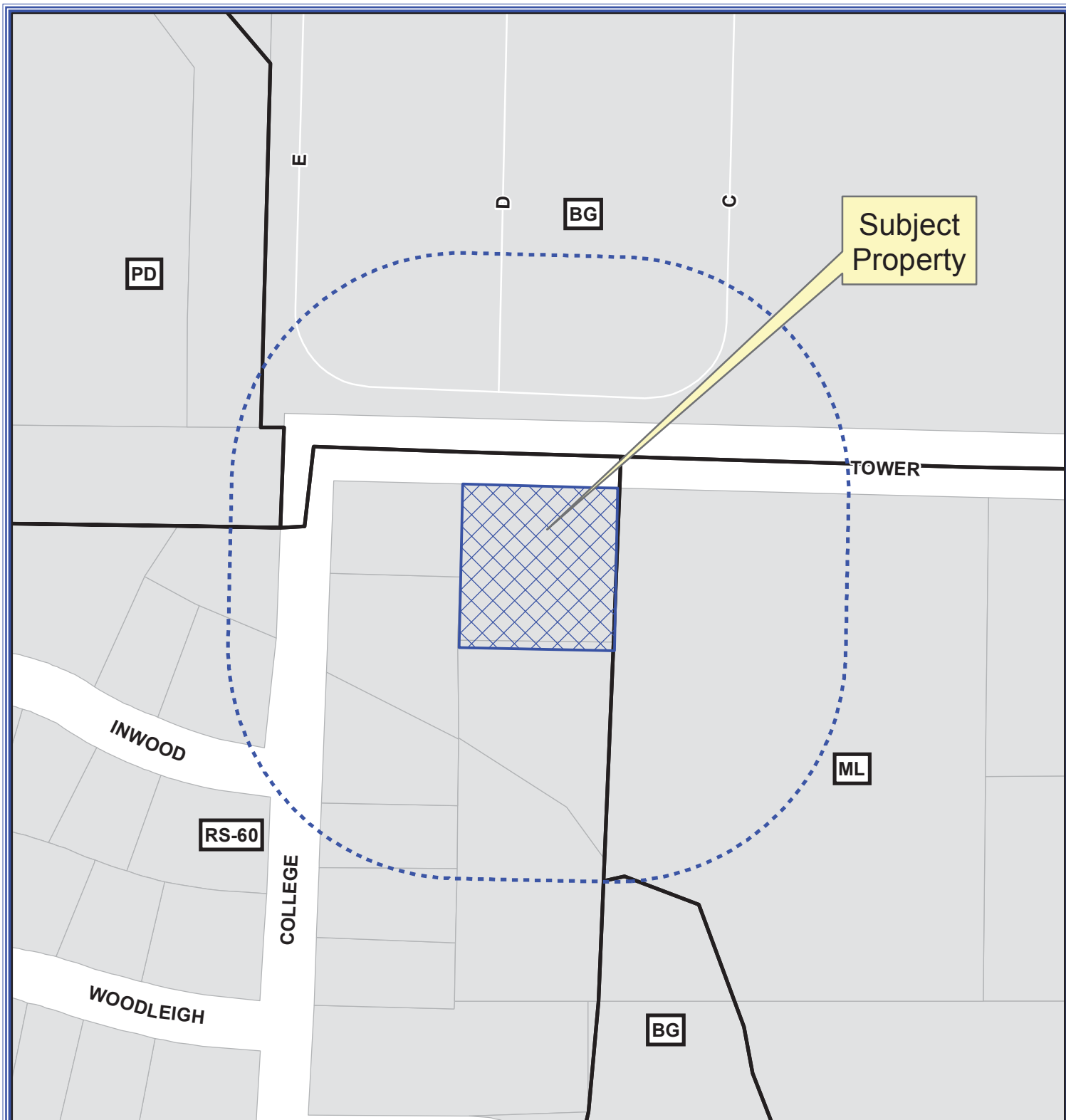


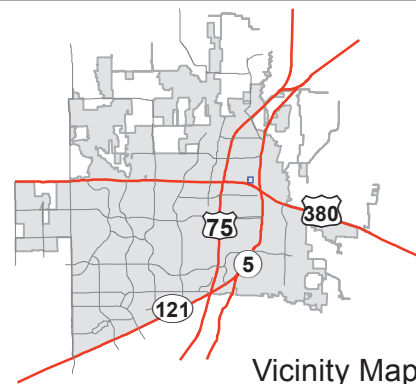
# EXHIBIT A



## Notification Map

Case: 16-255Z

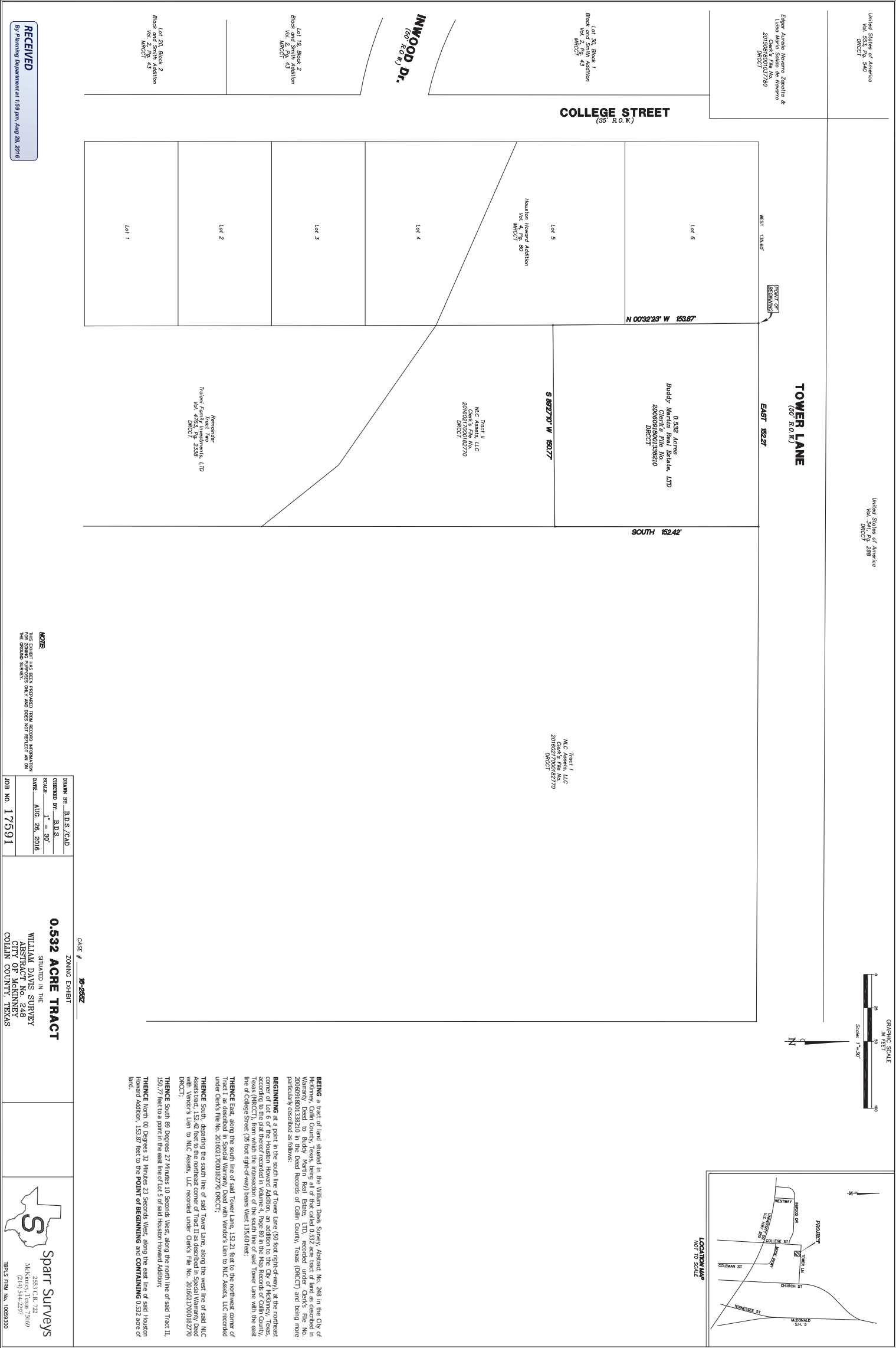
--- 200' Buffer



Path: S:\MCKGIS\Notification\Projects\2016\16-255Z.mxd

DISCLAIMER: This map and information contained in it were developed exclusively for use by the City of McKinney. Any use or reliance on this map by anyone else is at that party's risk and without liability to the City of McKinney, its officials or employees for any discrepancies, errors, or variances which may exist.

# EXHIBIT B



**NOTE**  
THIS SURVEY HAS BEEN PREPARED FROM AERIAL INFORMATION  
AND THE BOUNDARIES SHOWN ARE APPROXIMATE.

<b>DRAWN BY:</b> B.D.S./CAD
<b>CHECKED BY:</b> B.D.S.
<b>SCALE:</b> 1" = 30'
<b>DATE:</b> AUG. 26, 2016

**0.532 ACRE TRACT**  
SITUATED IN THE  
WILLIAM DAVIS SURVEY  
ASSY TRACT NO. 240  
SECTION 32, T11N, R11E,  
COLLIN COUNTY, TEXAS

**Case # 17-282Z**  
ZONING EXHIBIT

**Spartt Surveys**  
2555 C.R. 722  
MCKINNEY, TEXAS 75069  
(214) 544-2297  
TBR'S FIRM NO. 10059300

**BEGINNING** at a point in the south line of Tower Lane (50 foot right-of-way), at the northeast corner of the Houston Howard Addition, as shown on the City of Colley County, Texas (DRCCT), from which the intersection of the south line of said Tower Lane with the east line of College Street (35 foot right-of-way) bears West 135.60 feet;

**THENCE** East, along the south line of said Tower Lane, 152.21 feet to the northeast corner of Tract I as described in Special Warranty Deed with Vendor's Lien to NLC Assets, LLC recorded under Clerk's File No. 20150217000182770 DRCCT;

**THENCE** South, departing the south line of said Tower Lane, along the west line of said NLC Assesment, 157.42 feet to the northeast corner of Tract I as described in Special Warranty Deed with Vendor's Lien to NLC Assets, LLC recorded under Clerk's File No. 20150217000182770 DRCCT;

**THENCE** South 89 Degrees 27 Minutes 10 Seconds West, along the north line of said Tract II, 150.77 feet to a point in the east line of Lot 5 of said Houston Howard Addition;

**THENCE** North 00 Degrees 32 Minutes 33 Seconds West, along the east line of said Houston Howard Addition, 253.97 feet to the **POINT OF BEGINNING** and **CONTAINING** 0.532 acre of land.