



Site Improvement Plan: Guest Safety and Security  
*Necessary to promote or develop new and expanded business enterprises*

**BEST**

**2019**

McKINNEY  
online

**BEST**

**2020**

McKINNEY  
online





IRON FENCING W/ BRICK COLUMNS 80" HIGH

HOLLY HEDGE FENCE

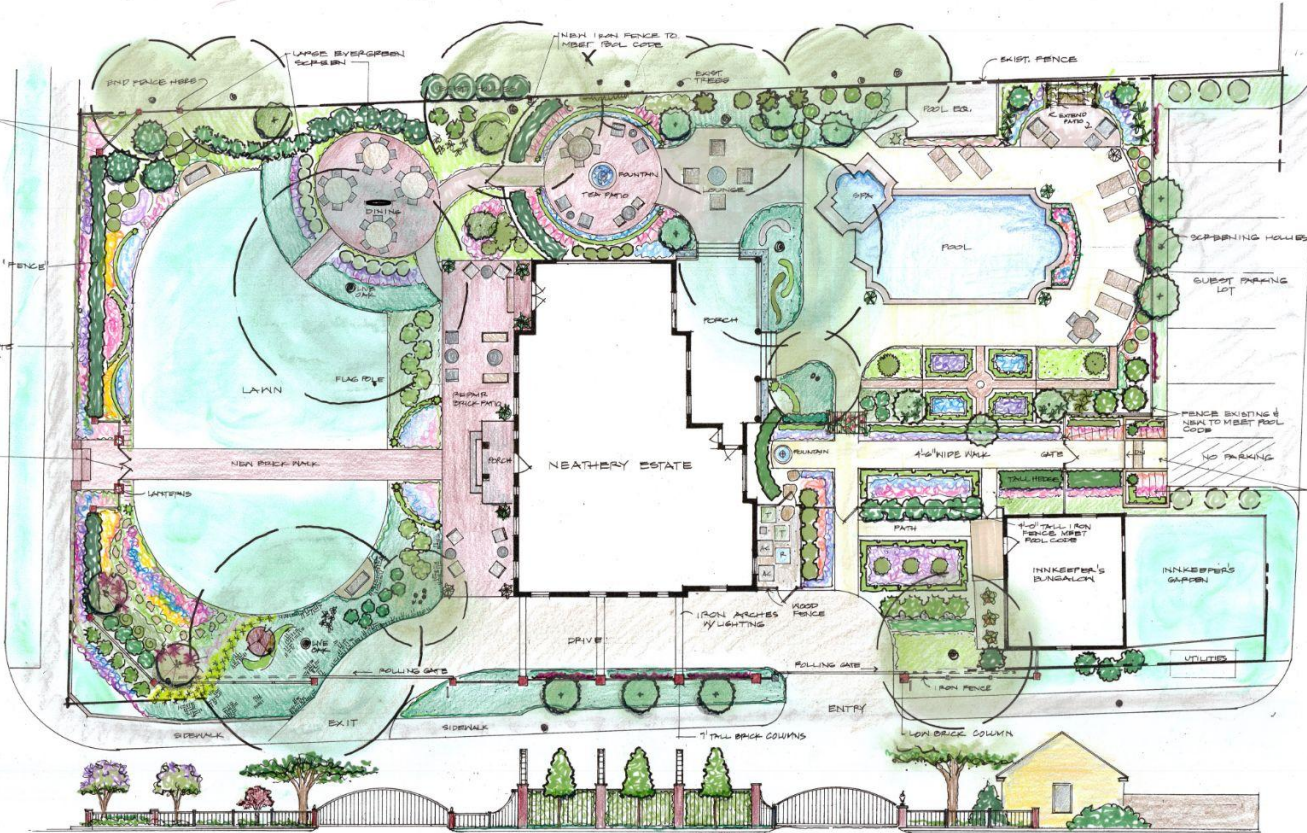
88-LEVEL CONCRETE CURB OR FOUR-NEAR

NEAR ENTRY STRIPS & GATE

landscape design by Great Gardens



972.562.4746



NEATHERY ESTATE  
218 N. HADDON  
MCKINNEY, TX 75069  
CONCEPT LANDSCAPE PLAN  
SCALE: 1/8" = 1'-0"  
JULY 2021

SUBST ENTRY LANDINGS & RAISED BEDS TO PARKING CURB LEVEL.



VIEW THRU DRIVE



NORTH SIDE ELEVATION  
1/8" = 1'-0"

## The Neathery Estate Landscape Project

### Phase One

#### Brick Work

*Sergio Garcia*

Brick Columns Materials x15	\$1,500.00
Install Brick Columns x15	\$1,800.00
Repair Brick Patio & Stairs	\$500.00
Brick Walkway Materials	\$1,500.00
<u>Install Brick Walkway</u>	<u>\$1,800.00</u>
<b>Total</b>	<b>\$7,100</b>

#### Tree Trimming and Removal (Completed)

*McBride Tree Services*

Tree Trimming and Live Oak Removal	\$3,400.00
<u>Permit</u>	<u>\$50.00</u>
<b>Total</b>	<b>\$3,450.00</b>

#### Iron Works

*Premier Fencing*

Iron Fencing	\$10,940.00
<u>Iron Gates x2</u>	<u>\$9,850.00</u>
<b>Total</b>	<b>\$20,790.00</b>

#### Front Patio Door

*Scott Construction*

Install	\$1,850.00
<u>Door with SideLights</u>	<u>\$3,030.85</u>
<b>Total</b>	<b>\$4,880.85</b>

#### Landscaping

*Great Gardens*

<b>Phase One</b>	<b>\$20,383.47</b>
------------------	--------------------

#### Concrete

*Jesus Ortega*

<b>Concrete</b>	<b>\$19,000.00</b>
-----------------	--------------------

<b>Total Price of Phase One:</b>	<b>\$75,604.32</b>
----------------------------------	--------------------

<b>Not including Landscaping:</b>	<b>\$55,220.85</b>
-----------------------------------	--------------------

<b>Not including Tree Services &amp; Landscaping</b>	<b>\$51,770.85</b>
--	--------------------

<b>MCDC Contribution Request</b>	<b>\$25,000</b>
----------------------------------	-----------------