

Land Use and Tax Base Summary for Module 55

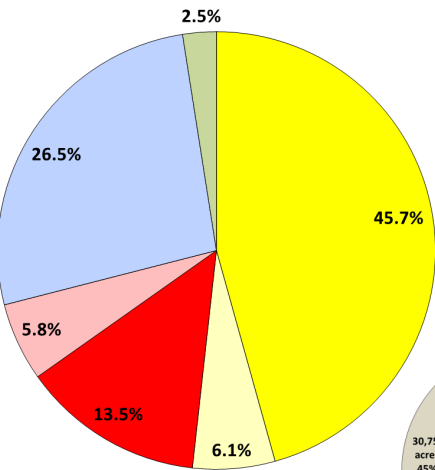
17-085Z Rezoning Request

Land Use Summary

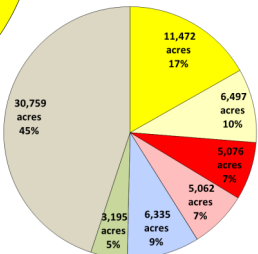
Below is a summary of existing and anticipated land uses for this module as of January 2016 based on information obtained from the Collin Central Appraisal District's certified tax roll in conjunction with approved zoning requests (for parcels currently undeveloped).

	Acres
Residential	1,025.4
Vacant Residential	136.4
Total Residential	1,161.8 (51.7%)
Non-Residential	302.1
Vacant Non-Residential	130.1
Total Non-Residential	432.2 (19.2%)
Mixed-Use	0.0
Vacant Mixed-Use	0.0
Total Mixed-Use¹	0 (0%)
Institutional (non-taxable)	595.2
Total Institutional (non-taxable)	595.2 (26.5%)
Agricultural/Undetermined	55.6
Total Agricultural/Undetermined²	55.6 (2.4%)
Total Acres (city limits only)	2,244.7 (100%)
Extraterritorial Jurisdiction (ETJ)	0.0
Total Extraterritorial Jurisdiction³	0.0 (0%)
Total Acres	2,244.7

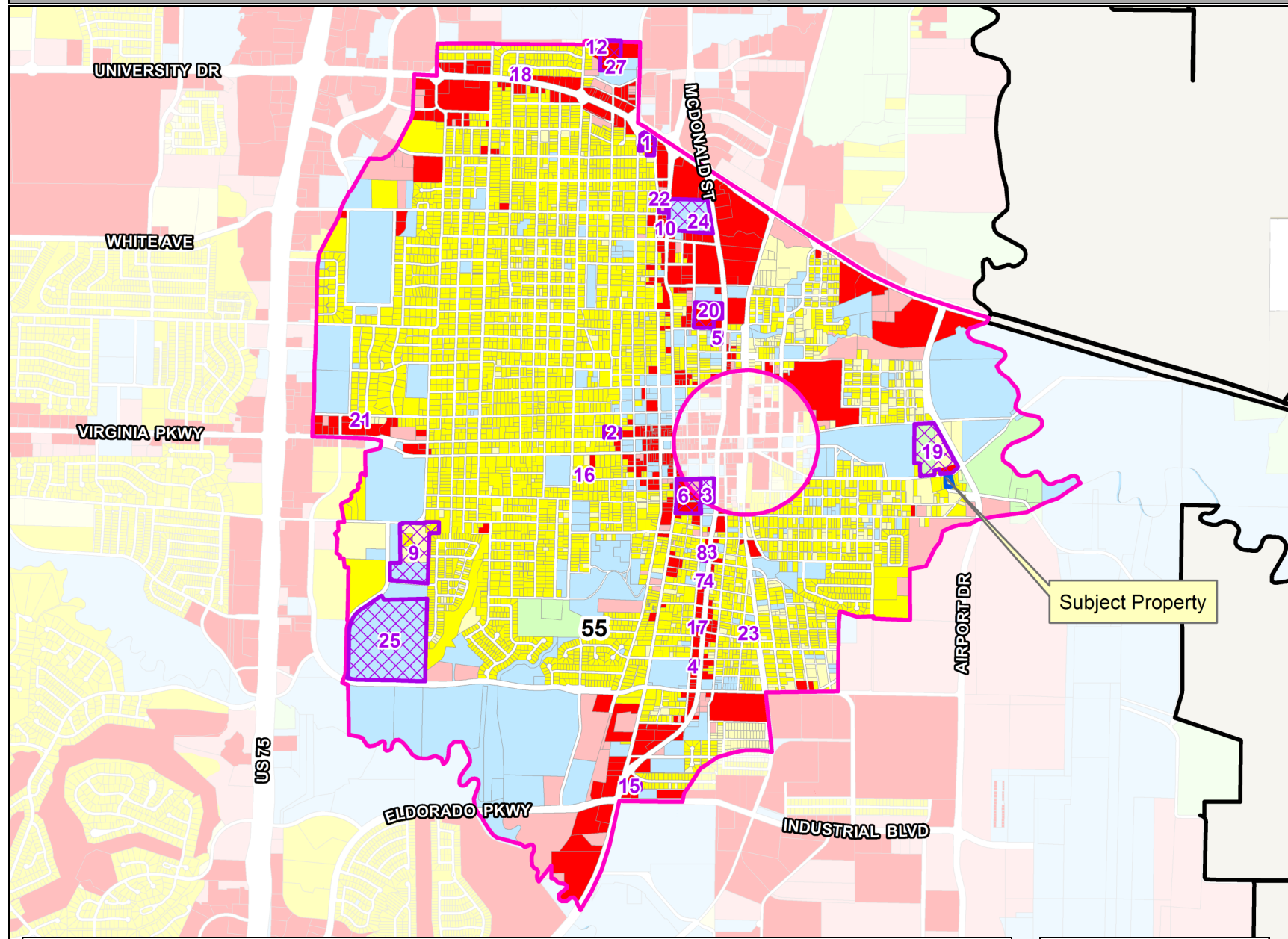
Module 55



Citywide and ETJ



Module 55 Map



Approved Projects Impacting Land Use or Tax Base (2016, 2017)⁴

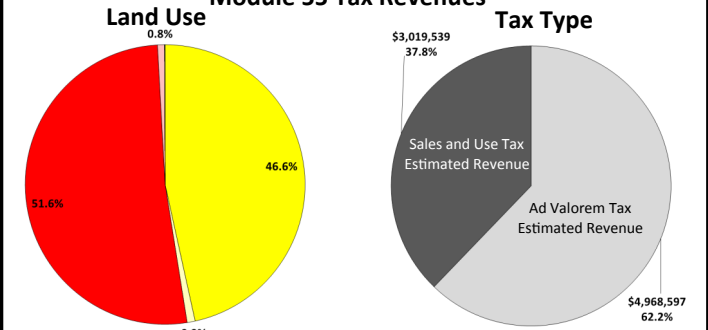
Map ID	Case Number	Project	Project Description	Acres
1	16-020Z	1302 N. Church St.	Rezoned the subject property from PD and RS 60 to C2	1.988
2	16-053SP	400W Virginia Office Building	Site plan for an office building	1.157
3	16-104RP	Downtown McKinney Mixed Use Addition	Site plan for automobile sales	8.766
4	16-123SP	HRMN Auto Sales	Site plan for retail and multi-family	0.483
5	16-155SP	Family Dollar	Rezoned the subject property from "BN" to "PD" - Planned Development	0.911
6	16-166SP	Downtown McKinney Block 1 and 2	Rezoned the subject property from "BN" to "PD" - Planned Development	6.347
7	16-167Z	McDonald South Retail	Rezoned the subject property from RS 60 Single Family to LI - Light Industrial	0.516
8	16-171Z	McKinney North Retail	Site plan for an office building and parking	0.450
9	16-209RP	Vintage Place Addition	Record plat for 45 single family residential lots, 1 residential lot	15.197
10	16-228SP	Taqueria Hernandez Restaurant	Site plan for restaurant expansion	0.336
11	16-259Z	Tower Lane	Rezoned the subject property from RS 60 Single Family to LI - Light Industrial	0.548
12	16-258SP	Tower Lane Addition	Site plan for an office / warehouse building	0.548
13	16-281SP	McDonald Tortilla Factory	Site plan for a restaurant	0.449
14	16-282SP	McDonald South Retail	Site plan for an office building	0.232
15	16-310Z	S. McDonald St.	Rezoned the subject property from single family to "C3"	0.834
16	16-315RP	Cherry Addition	Amending plat for Lot 4, Block A	0.132
17	16-330SP	Texas Diesel Store	Site plan for an office building and parking	0.555
18	16-349Z	Black and Smith Addition	Rezoned the subject property from "RS 60" to "C1" - Neighborhood Commercial District	0.282
19	16-374Z	Creeks on Virginia	Rezoned the subject property from "AG" to "PD"	12.321
20	17-014SP	McKinney Plaza Shopping Center	Site plan for McKinney Plaza Shopping Center	4.831
21	17-008Z	Virginia Center Addition	Rezoned the subject property from "PD" to "SO" - Suburban Office District	0.415
22	17-018RP	White Avenue Addition	Record plat for Lots 1-6, Block A	0.976
23	17-021RP	Hamilton-Jefferson Addition	Record plat for Lots 1-6, Block A	1.047
24	17-039Z	Merritt Homes	Rezoned the subject property from "RG 18" to "PD" - Planned Development	10.205
25	17-056SP	McKinney High School	Site plan for a Fine Arts and Education Building	46.060
26	17-101SP	1202 W University	Site plan for an office building	0.261
27	17-182RP	Tower Lane Manufacturing Addition	Record plat for Lots 1 and 2, Block A	4.728

Tax Base Summary⁵

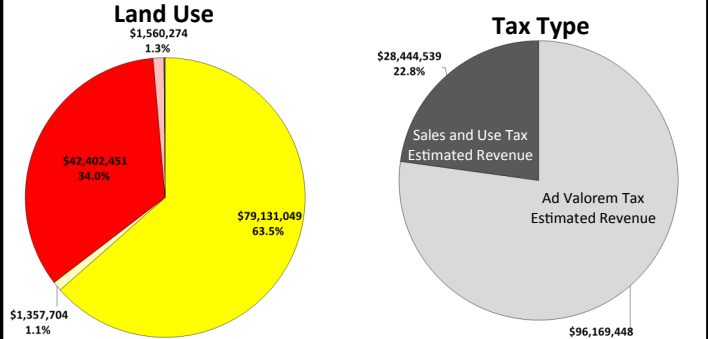
Based on the existing land uses in this module, below is a summary of the estimated tax revenues as of January 2016. These revenues are aggregated from Collin Central Appraisal District (for Ad Valorem taxes) and from the Texas Comptroller of Public Accounts (for Sales and Use taxes).

Land Use	Ad Valorem	Sales Tax	Total
Residential	\$ 3,719,090	\$ -	\$ 3,719,090
Non-Residential	\$ 1,105,642	\$ 3,019,539	\$ 4,125,181
Mixed-Use	\$ -	\$ -	\$ -
Tax Revenue from Developed Land	\$ 4,824,732	\$ 3,019,539	\$ 7,844,271
Vacant Residential	\$ 73,953	\$ -	\$ 73,953
Vacant Non-Residential	\$ 64,505	\$ -	\$ 64,505
Vacant Mixed-Use	\$ -	\$ -	\$ -
Agricultural/Undetermined	\$ 5,407	\$ -	\$ 5,407
Tax Revenue from Undeveloped Land	\$ 143,865	\$ -	\$ 143,865
Grand Total (city limits only)	\$ 4,968,597	\$ 3,019,539	\$ 7,988,136

Module 55 Tax Revenues



Citywide Tax Revenues



NOTE: In general, land uses that generate tax revenues less than 1% of total revenues are not shown on chart.

1. Mixed-Use land uses reflect those parcels for which zoning allows for residential and/or non-residential horizontal or vertically-integrated uses.
 2. Agricultural/Undetermined land uses reflect those parcels with agricultural zoning for which no future use is currently defined.
 3. Properties located in the ETJ are not included in the Land Use Summary and the Tax Base Summary because they fall outside of the city's land use and taxing jurisdiction.
 4. Zoning, site plan and record plat cases approved after the certified tax roll of January 1, 2016 and change land use and/or vacancy status. These cases are not included in the Land Use Summary or the Tax Base Summary.
 5. Institutional (non-taxable) properties are not included in the Tax Base Summary because these properties do not generate taxes. Estimated tax revenues do not include any property exemptions, delinquencies, etc. and; therefore, may not reflect actual collection amounts.

DISCLAIMER: This map and information contained in it were developed exclusively for use by the City of McKinney. Any use or reliance on this map by anyone else is at that party's risk and without liability to the City of McKinney, its officials or employees for any discrepancies, errors or variances which may exist.