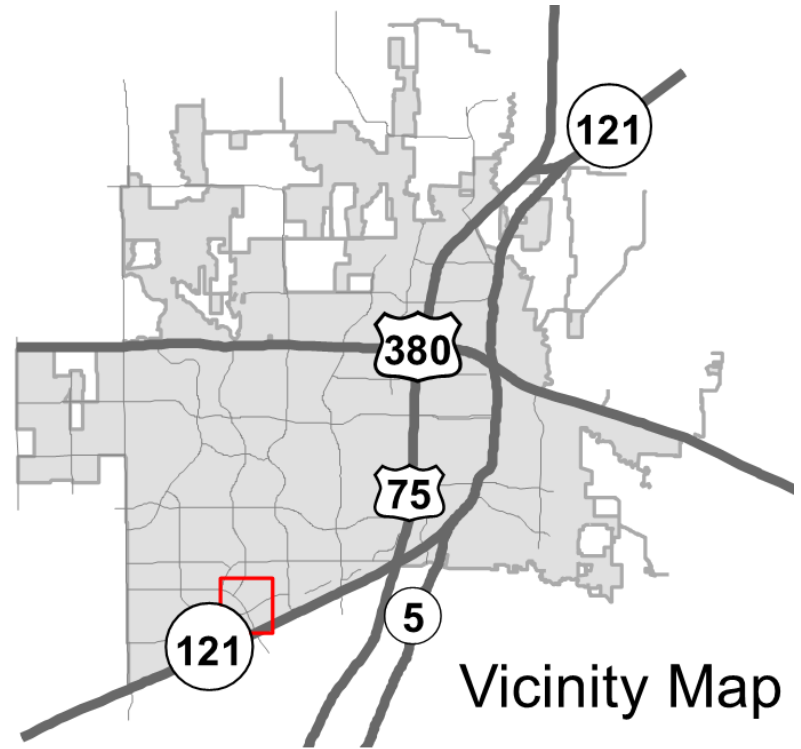
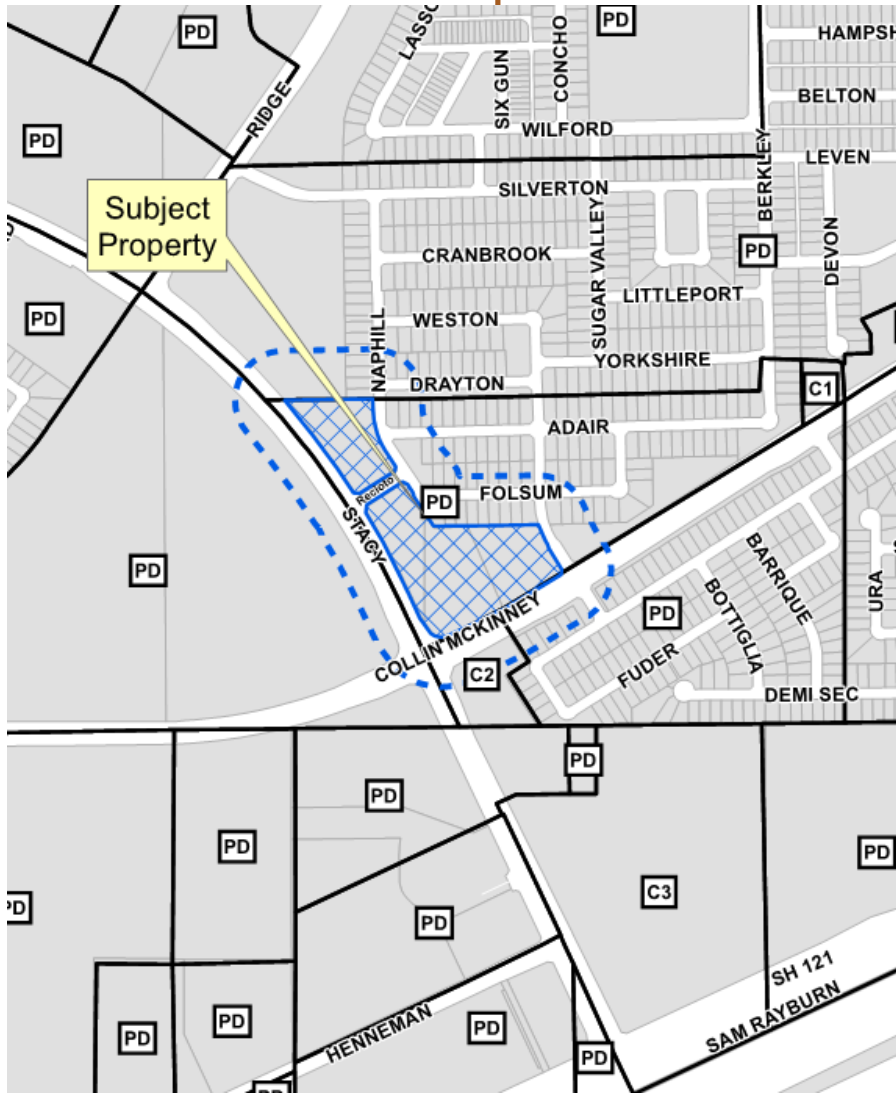


NEC Colling McKinney & Stacy Rezoning

19-0035Z

Location Map



Vicinity Map

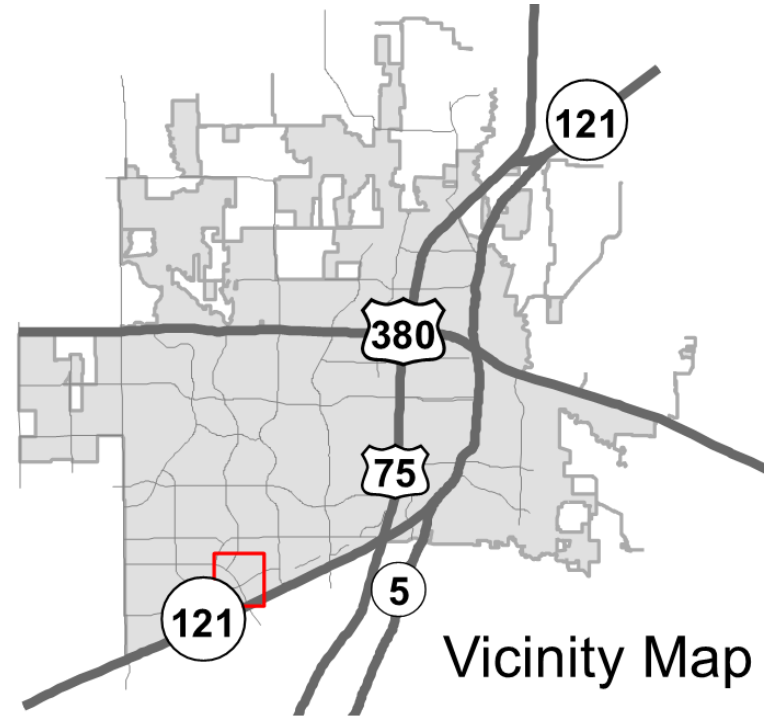
Viewing the subject property toward the north west from Collin McKinney Parkway



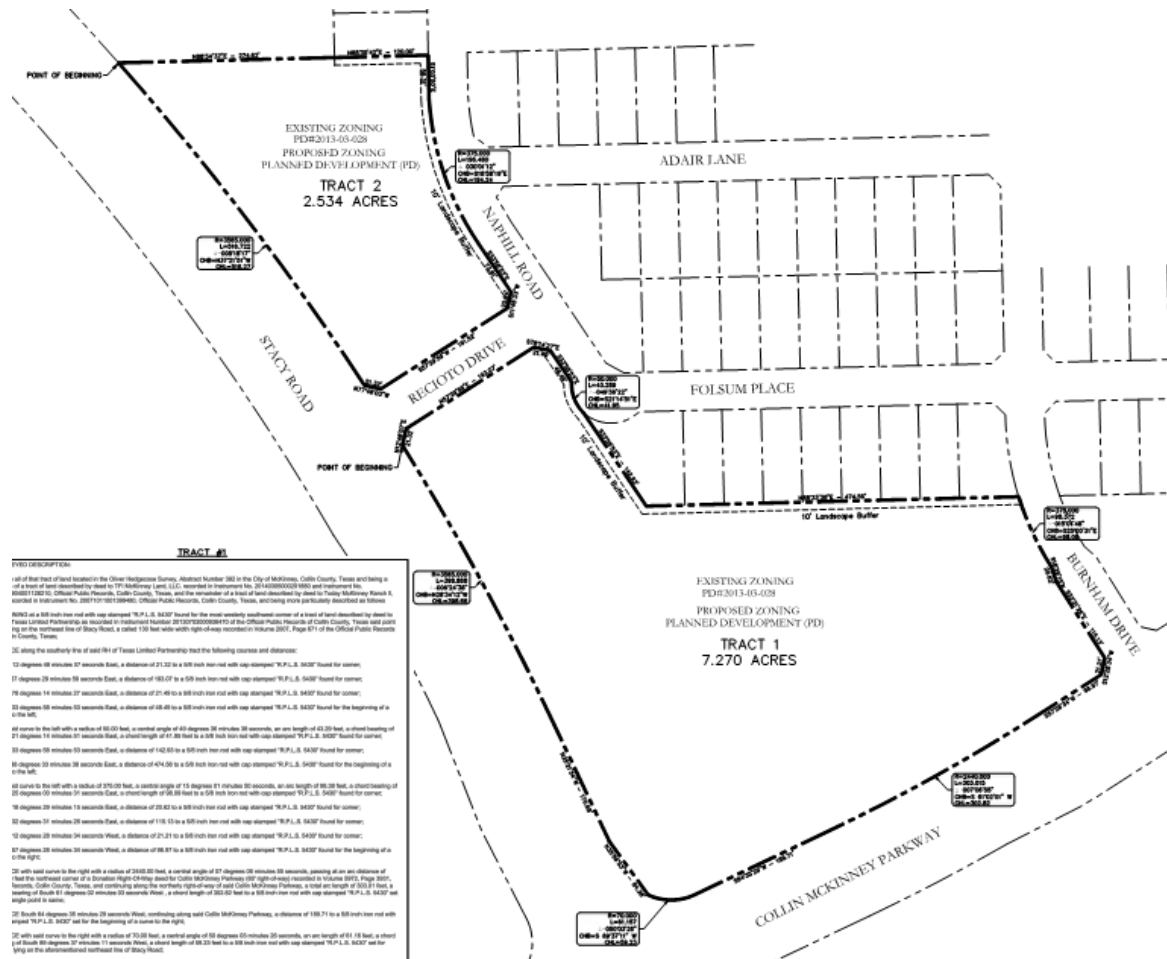
Viewing the subject property toward the north east from Stacy Road



Aerial Exhibit



Proposed Zoning Exhibit



TRACT #1

EYES DESCRIPTION:

All of that part of land located in the Olivar Hedgeowner Survey, Abstract Number 382 in the City of McKinney, Collin County, Texas, and being a part of a tract described by deed as 774 McKinney Lane, LLC, recorded in Volume 31, page 100000000000 and instrument No. 200871262-0, Collin Public Records, Collin County, Texas, and the remainder of a tract described by deed as Tuley McKinney Ranch II, located in instrument No. 2007101200000, Collin Public Records, Collin County, Texas, and being more particularly described as follows:

10 degrees 38 minutes 37 seconds East, a distance of 21.32 to a 50 inch iron rod with cap stamped "R.P.L.S. 5430" found for corner;

17 degrees 28 minutes 58 seconds East, a distance of 183.07 to a 50 inch iron rod with cap stamped "R.P.L.S. 5430" found for corner;

18 degrees 14 minutes 27 seconds East, a distance of 21.49 to a 50 inch iron rod with cap stamped "R.P.L.S. 5430" found for corner;

23 degrees 58 minutes 22 seconds East, a distance of 68.48 to a 50 inch iron rod with cap stamped "R.P.L.S. 5430" found for the beginning of a curve;

All curves to the left with a radius of 98.20 feet, a central angle of 45 degrees 28 minutes 38 seconds, an arc length of 43.20 feet, a chord bearing of 27 degrees 18 minutes 37 seconds East, a chord length of 41.88 feet to a 50 inch iron rod with cap stamped "R.P.L.S. 5430" found for corner;

23 degrees 58 minutes 22 seconds East, a distance of 142.83 to a 50 inch iron rod with cap stamped "R.P.L.S. 5430" found for corner;

30 degrees 22 minutes 38 seconds East, a distance of 474.50 to a 50 inch iron rod with cap stamped "R.P.L.S. 5430" found for the beginning of a curve;

All curves to the left with a radius of 370.00 feet, a central angle of 13 degrees 17 minutes 30 seconds, an arc length of 68.28 feet, a chord bearing of 23 degrees 58 minutes 22 seconds East, a chord length of 68.58 feet to a 50 inch iron rod with cap stamped "R.P.L.S. 5430" found for corner;

18 degrees 29 minutes 18 seconds East, a distance of 25.82 to a 50 inch iron rod with cap stamped "R.P.L.S. 5430" found for corner;

32 degrees 31 minutes 25 seconds East, a distance of 118.12 to a 50 inch iron rod with cap stamped "R.P.L.S. 5430" found for corner;

12 degrees 28 minutes 34 seconds West, a distance of 21.21 to a 50 inch iron rod with cap stamped "R.P.L.S. 5430" found for corner;

87 degrees 28 minutes 34 seconds West, a distance of 98.97 to a 50 inch iron rod with cap stamped "R.P.L.S. 5430" found for the beginning of a curve;

All curves to the right with a radius of 2483.00 feet, a central angle of 37 degrees 08 minutes 58 seconds, starting at an arc distance of 148 feet the northwest corner of a Donor's Right-of-Way Road for Collin McKinney Parkway (87' right-of-way) recorded in Volume 8475, Page 8017, Records, Collin County, Texas, and continuing along the roadway right-of-way of said Collin McKinney Parkway, a total arc length of 303.31 feet, a bearing of South 81 degrees 22 minutes 30 seconds West, a chord length of 252.82 feet to a 50 inch iron rod with cap stamped "R.P.L.S. 5430" set high used as a mark;

28 South 81 degrees 22 minutes 30 seconds West, north-south along said Collin McKinney Parkway, a distance of 188.71 to a 50 inch iron rod with cap stamped "R.P.L.S. 5430" set for the beginning of a curve to the right;

All curves to the right with a radius of 70.00 feet, a central angle of 58 degrees 05 minutes 35 seconds, an arc length of 81.18 feet, a chord of South 80 degrees 29 minutes 11 seconds West, a chord length of 88.25 feet to a 50 inch iron rod with cap stamped "R.P.L.S. 5430" set for being on the abutment of the northeast line of Stacy Road;



