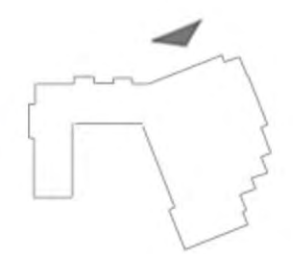
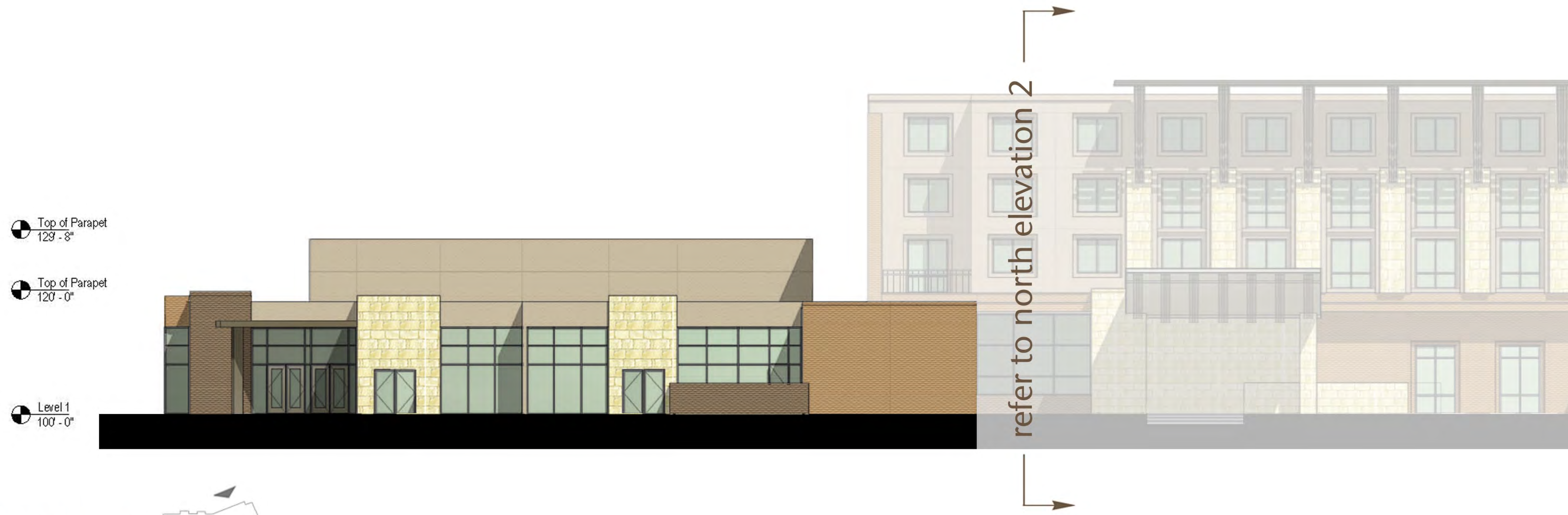
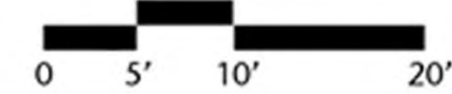
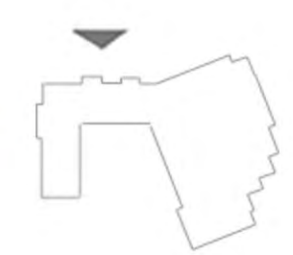


north elevation 1
50.5% masonry



north elevation 2
50.5% masonry

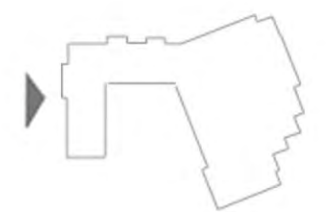


gateway hotel and event center

mckinney, texas

- Top of Parapet
151'-0"
- Level 4
139'-4"
- Level 3
129'-8"
- Level 2
127'-0"
- Level 1
107'-0"

west elevation 1
50.4% masonry

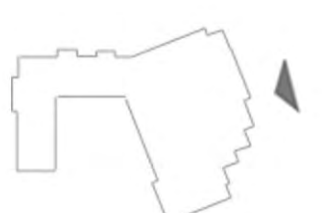


Top of Parapet
159'-0"

refer to west elevation 2

- Top of Parapet
120'-0"
- Top of Wall
108'-4"
- Level 1
107'-0"

east elevation 1
50.4% masonry



refer to west elevation 2



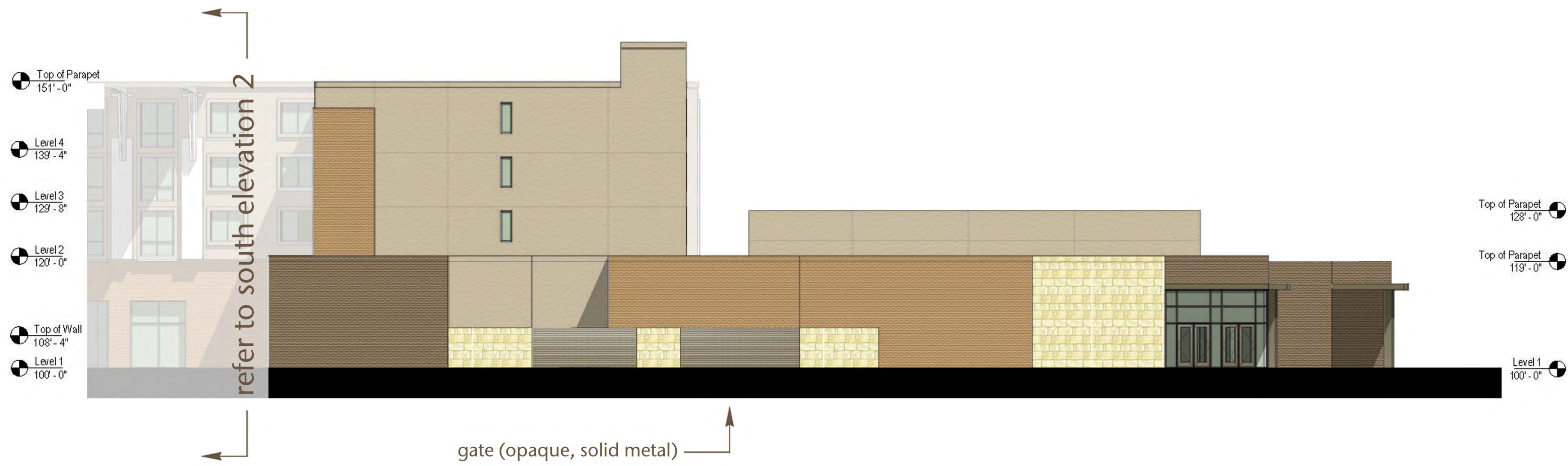
gateway hotel and event center

mckinney, texas

© three 2013
september 20, 2013



south elevation 1
52.4% masonry



south elevation 3
52.4% masonry



gateway hotel and event center

mckinney, texas

© three 2013
september 20, 2013

gateway hotel and event center
 mckinney, texas



west elevation 2
 52.7% masonry



east elevation 2
 53.2% masonry



south elevation 2
 50.4% masonry





perspective view 1

gateway hotel and event center

mckinney, texas

© three 2013
september 20, 2013



perspective view 2

gateway hotel and event center

McKinney, Texas

© three 2013
September 20, 2013

north façade:

stucco 01: 49.5%
stucco 02: 0%
brick 01: 18.5%
brick 02: 17%
stone: 15%

note: material amounts shown represent one continuous north façade

east façade:

stucco 01: 48%
stucco 02: 1.6%
brick 01: 28%
brick 02: 20%
stone: 2.4%

south façade:

stucco 01: 47.6%
stucco 02: 0%
brick 01: 31%
brick 02: 16.4%
stone: 5%

note: material amounts shown represent one continuous south façade (courtyard not included)

west façade:

stucco 01: 45%
stucco 02: 4.6%
brick 01: 40%
brick 02: 10%
stone: 0.4%

material percentage calculations