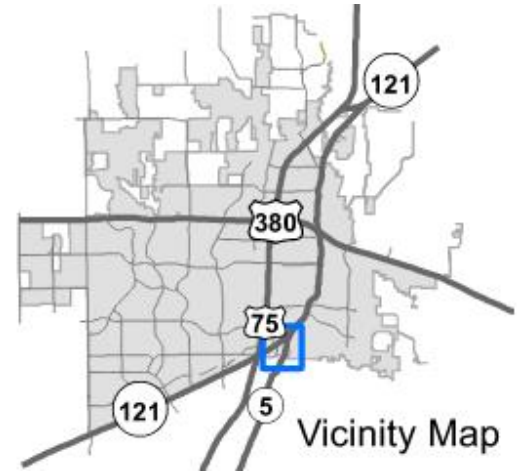
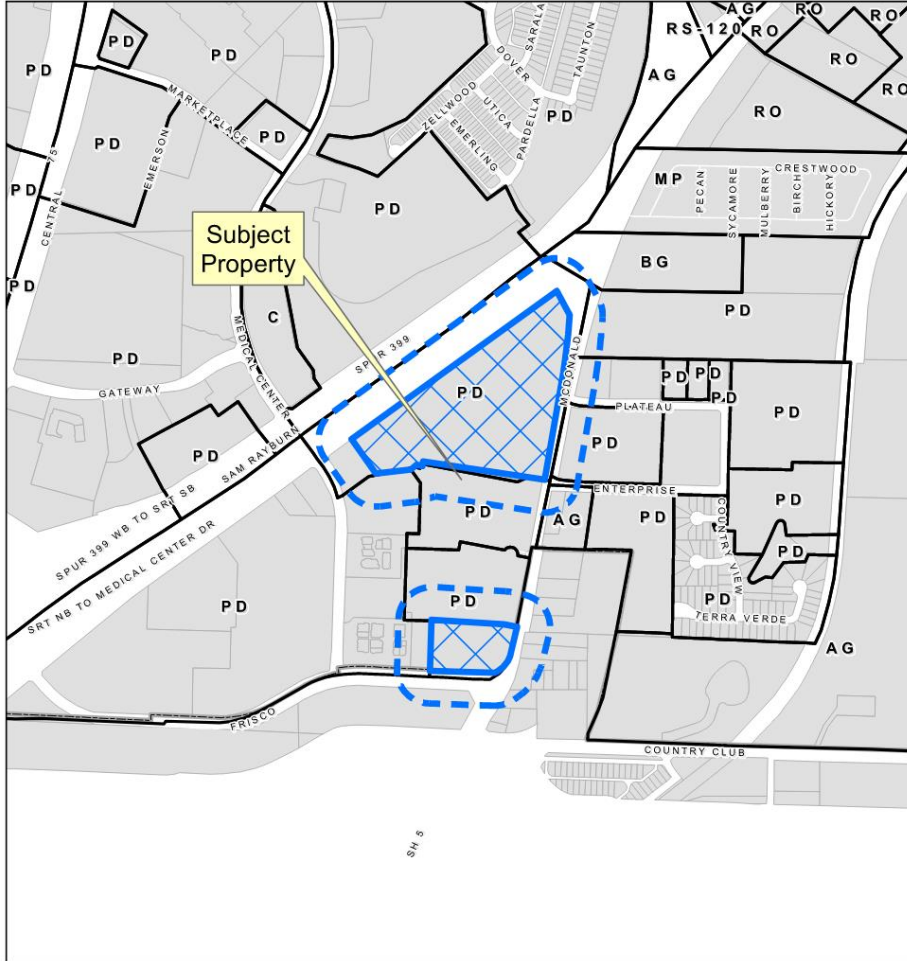


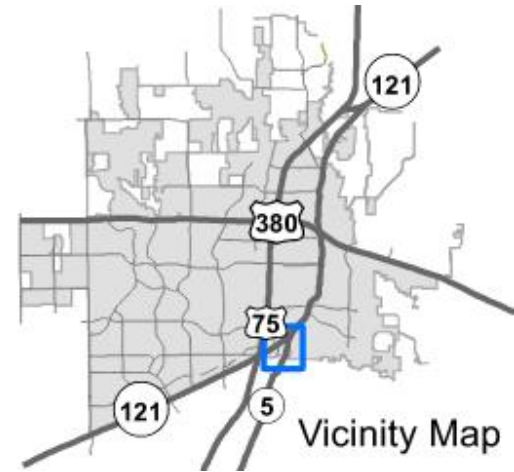
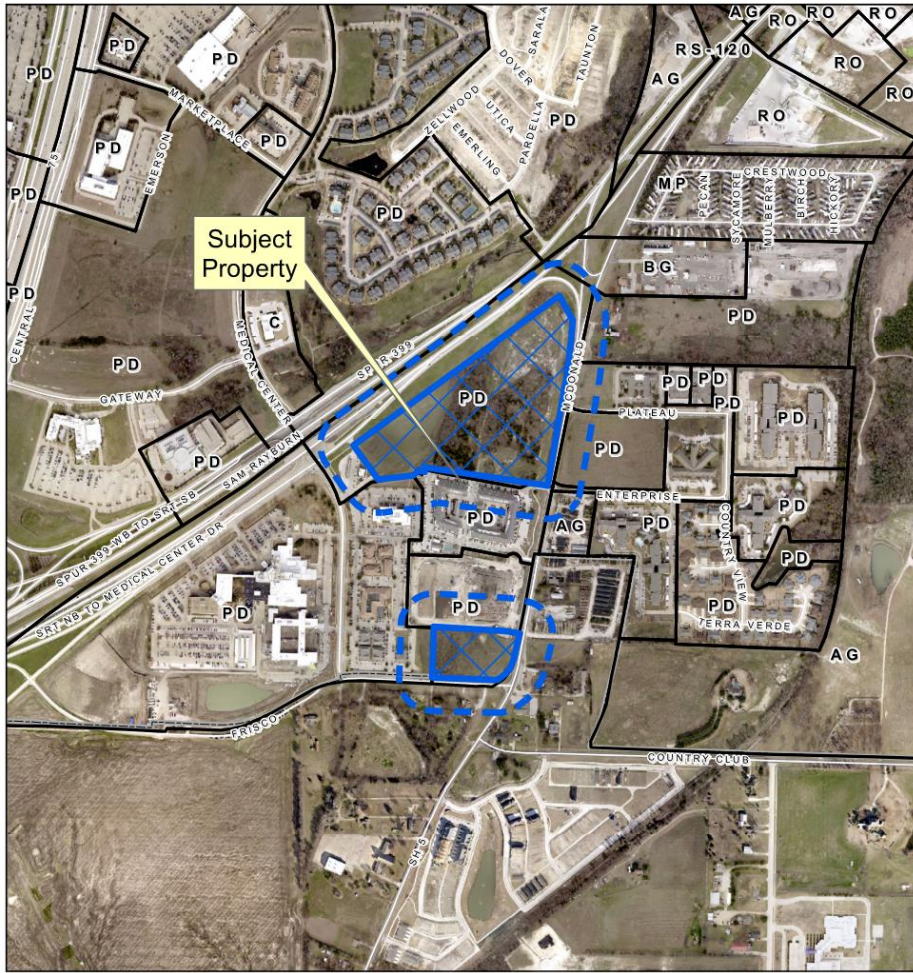
McKinney Urban Village

20-0127Z

Location Map



Aerial Exhibit



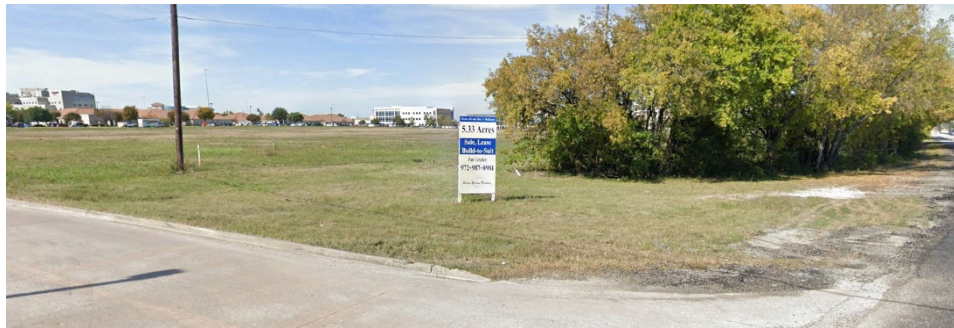
Looking Northeast from
Spur 399 Frontage Road

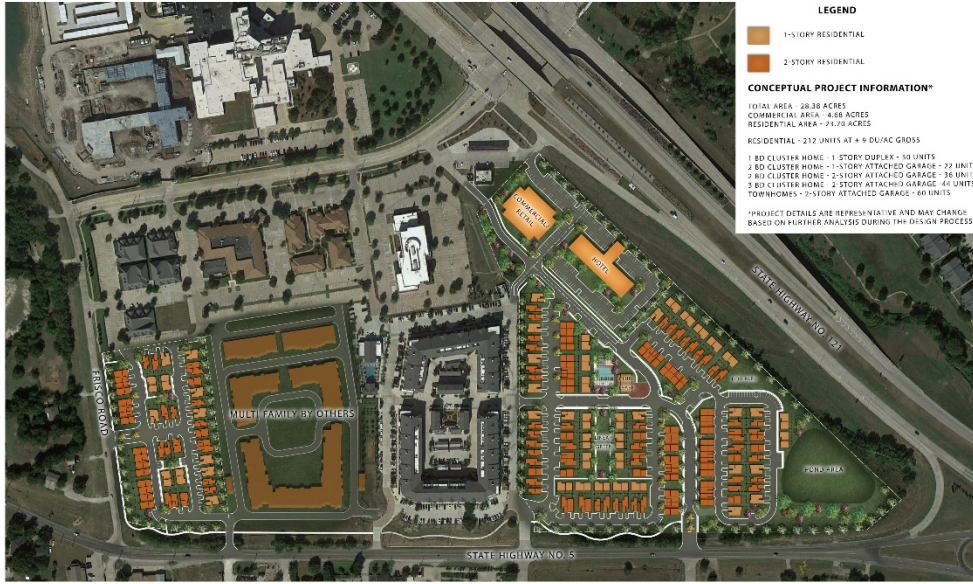


Looking Southwest
From Highway 5 and
Spur 399



Looking Northwest
From Highway 5 and
Frisco Road





LEGEND

- 1-1 STORY RESIDENTIAL
- 2-2 STORY RESIDENTIAL

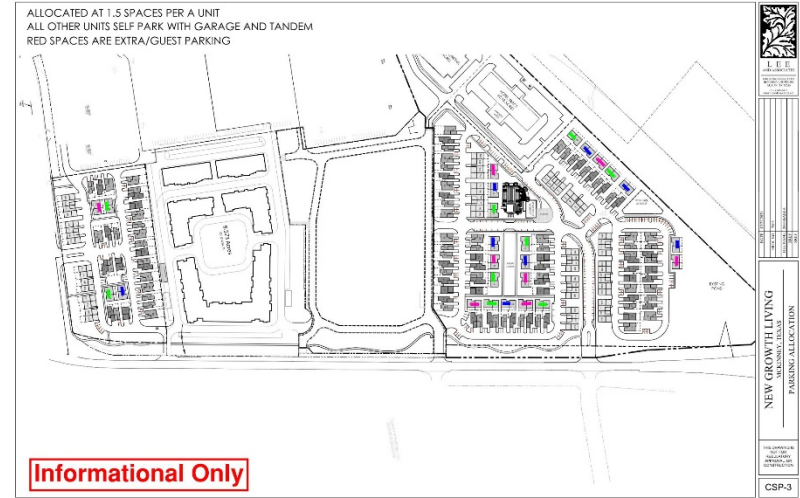
CONCEPTUAL PROJECT INFORMATION*

TOTAL AREA - 28.38 ACRES
 COMMERCIAL AREA - 4.68 ACRES
 RESIDENTIAL AREA - 23.70 ACRES

RESIDENTIAL - 212 UNITS AT 4.9 DU/AC GROSS

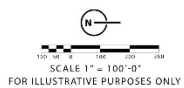
1 BD CLUSTER HOME - 1 STORY DUPLEX - 40 UNITS
 2 BD CLUSTER HOME - 1 STORY ATTACHED GARAGE - 22 UNITS
 2 RD CLUSTER HOME - 2 STORY ATTACHED GARAGE - 36 UNITS
 3 BD CLUSTER HOME - 2 STORY ATTACHED GARAGE - 44 UNITS
 TOWNHOMES - 2 STORY ATTACHED GARAGE - 60 UNITS

*PROJECT DETAILS ARE REPRESENTATIVE AND MAY CHANGE BASED ON PLANNING ANALYSIS DURING THE DESIGN PROCESS

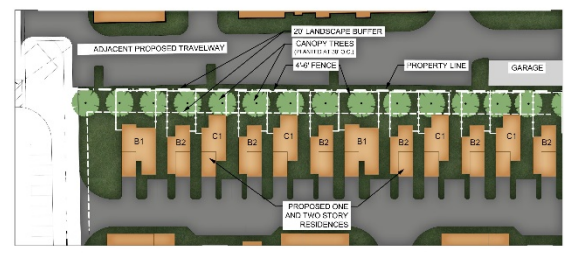
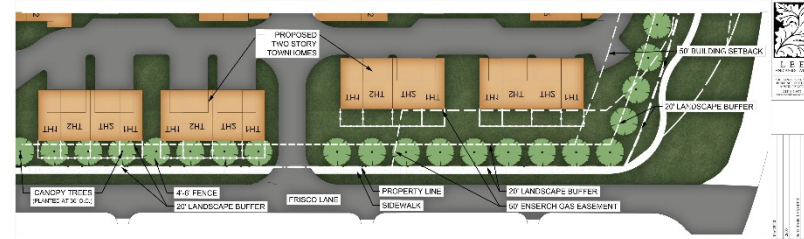


Informational Only

NEW GROWTH LIVING
 MCKINNEY, TEXAS
 ILLUSTRATIVE SITE PLAN
 CSP-3



NEWGROWTH - MCKINNEY MEDICAL VILLAGE - MIXED USE
 MCKINNEY, TEXAS
 Illustrative Site Plan



Informational Only



NEW GROWTH LIVING
 MCKINNEY, TEXAS
 ILLUSTRATIVE SITE PLAN
 TYPICAL LANDSCAPE BUFFER EXHIBIT
 CSP-1

**Proposed
 Concept Plan
 Informational Only**

