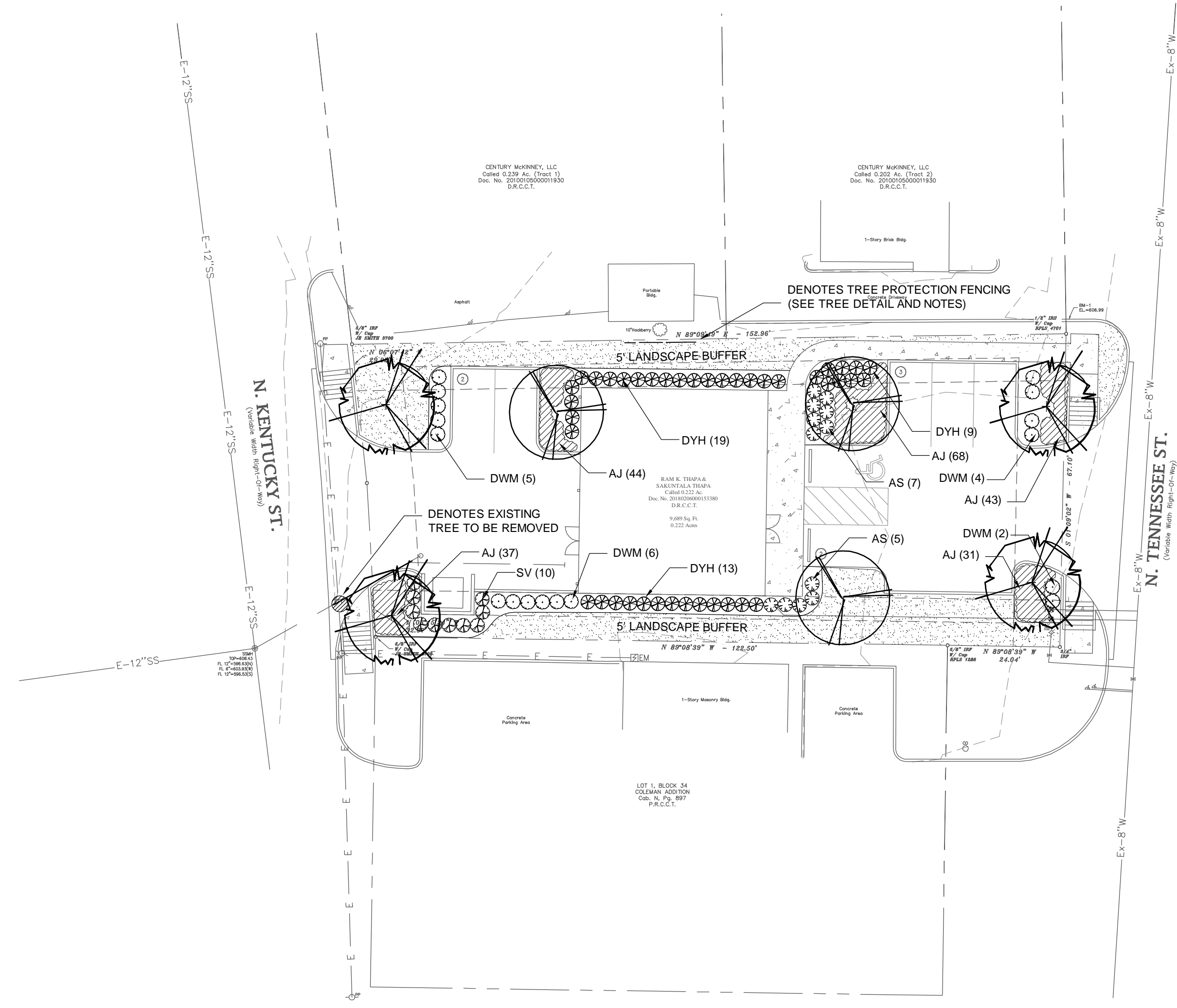


REV. DATE	REVISION DESCRIPTION
4-1-2019	PER CITY COMMENTS
4-15-2019	PER CITY COMMENTS
5-3-2019	PER CITY COMMENTS
5-8-2019	PER CITY COMMENTS



Proposed Trees

Symbol	Key	Name	Size	Spacing
	LE	Elm, Bosque Lacebark <i>Ulmus parvifolia</i>	4" Cal / 14' Ht.	As Scaled
	DO	Oak, Durand <i>Quercus sinuata</i>	4" Cal / 14' Ht.	As Scaled

Proposed Plants

Symbol	Key	Name	Size	Spacing
	SV	Viburnum, Sweet <i>Viburnum Odoratisimum</i>	5 Gal./ 3Ht. Min.	36"
	DWM	Myrtle, Dwarf Wax <i>Myrica pusilla</i>	5 Gal./ 3Ht. Min.	36"
	DYH	Holly, Dwarf Yaupon <i>Ilex vomitoria 'nana'</i>	3 Gal.	36"
	AJ	Jasmine, Asian <i>Trachelospermum asiaticum</i>	4" Cont.	18"

Common Bermuda Solid Sod or Hydromulch - 1,975 s.f. +/-
 --- Denotes bed line between turf and bed planting areas -
 To be 4" Brown, Commercial Grade, Steel Edging

Landscape Requirement Calculations

Required Percentage of Total Site Landscaping	Min. 10%
Site Area	9,689 sf
Proposed Landscape Area	3,073 sf
Percentage of Site to be in Living Landscape	31.71%

Required # of Min. 4" Cal./12 Trees Along Street Frontage- N. Kentucky St.	1 per 40'
Length of Street Frontage	62.85'
Number of Trees Required	2
Number of Trees Provided	2

Required # of Min. 4" Cal./12 Trees Along Street Frontage- N. Tennessee Street	1 per 40'
Length of Street Frontage	67.10'
Number of Trees Required	2
Number of Trees Provided	2

Notes:
 The Contractor shall verify water restrictions with the City of McKinney at time of planting. Should water restrictions not allow for hydromulch, hydroseeding, or sprigging (Stage 3 and 4 water restrictions), an approved alternative for grassing shall be installed.

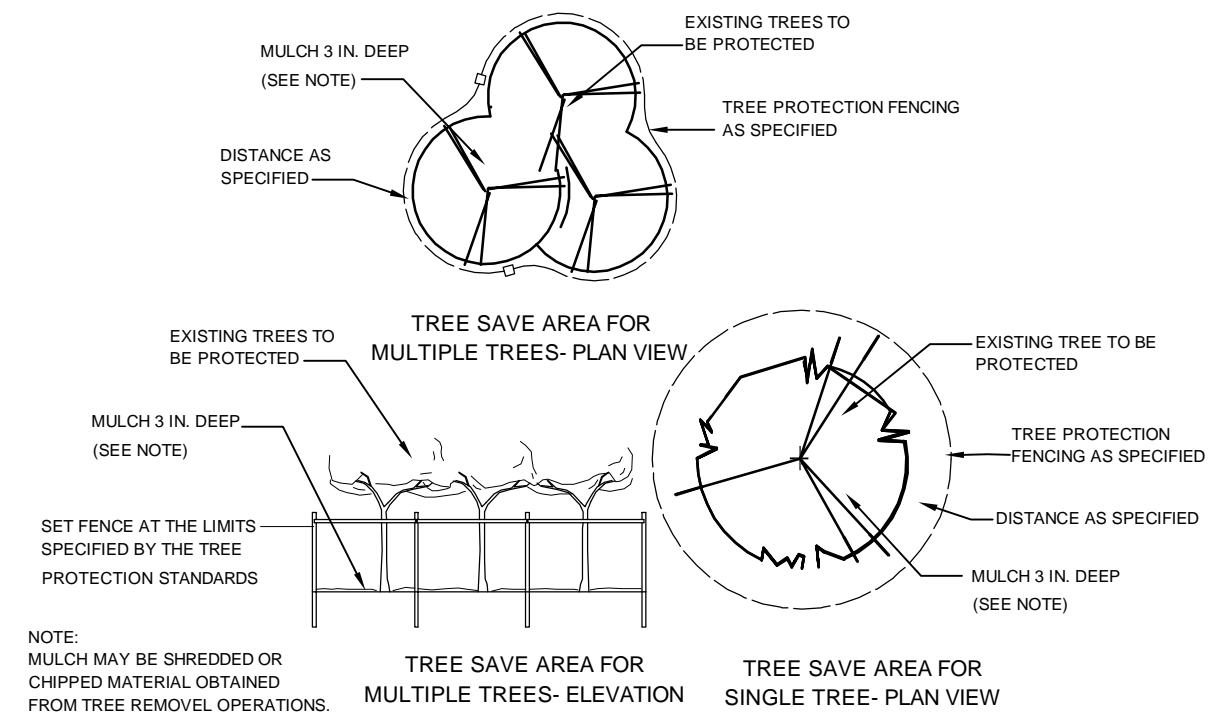
Irrigation Affidavit
 All landscaped areas shown on plan shall be irrigated by an automatic underground with rain and freeze sensors and evapotranspiration (ET) weather based controller and said irrigation system shall be designed by a qualified professional and installed by a licensed irrigator.

Notes
 No changes shall be made to the plans, including plant material type and location without prior approval from Landscape Architect or Owner.
 All plant material shall be guaranteed for a period of 1 year from date of installation completion. Wording to this effect shall be included in Contractor's proposal.
 The Contractor shall notify the Landscape Architect in writing of discrepancies between the plans and actual site conditions prior to commencing work. Failure to do so shall be interpreted as the Contractor accepting such conditions and responsible at no additional cost to Owner, for any future adjustments that need to be made.

All work shall be in accordance to plans. Any defective work shall be corrected at no additional cost.
 The quality of the plant material is subject to the approval of the Landscape Architect and may be rejected before or after installation. All plant material must meet all American Standard for Nursery Stock Standards (ANSNS).
 All areas to be sodded shall first be tilled to a uniform depth of 4 inches in two, crossing directions. After the initial tilling operation, incorporate 1,500 pounds per acre of 10-20-10 fertilizer or as specified by a soil test. Apply amendments as specified by a soil test.

Sod strips shall be pulled tightly together in a neat orderly manner. Do not overlap sod strips and do not use any strips that exhibit weak or thin soil.
 Installed sod that turns yellow shall be given 7 days to recover before it will be rejected. Replace rejected sod by completely and uniformly cutting out area to make the repair.
 After installation, the sod shall be rolled in two directions with a roller not weighing less than 100 lbs. per square foot.
 Amendments shall be added to each planting pit and bed area.
 All burlap material on balled and burlapped plants shall be the type that decomposes within two years. Synthetic or plastic type wrappings are not allowed.
 After setting balled and burlapped plants, remove the top 1/3 of the burlap and completely remove all binder twine. No burlap shall show above the surface.

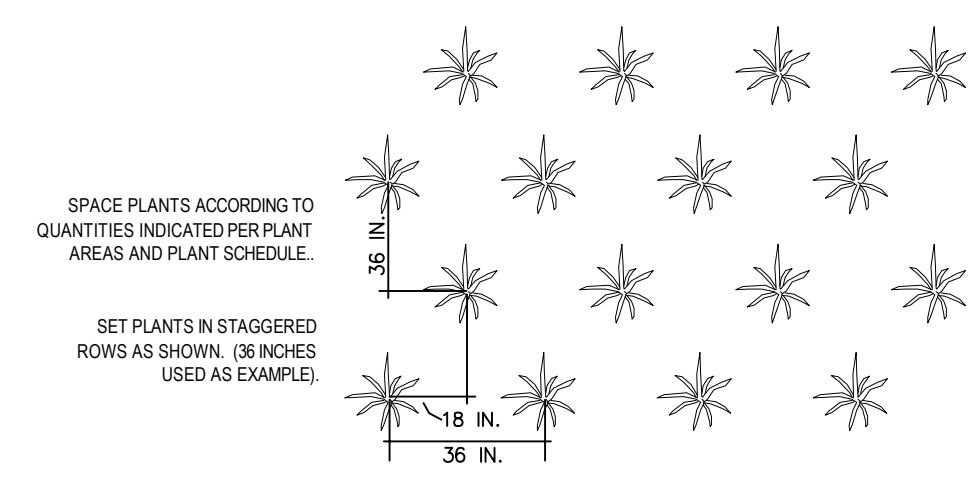
All planting areas shall be graded smooth, without the presence of low spots, depressions or irregular humps. Areas around planting beds shall be constructed to re-direct drainage around and away from planting areas. All planting areas shall be constructed and graded to ensure positive drainage away from structures.
 Cedar mulch shall be applied within 24 hours of planting of new plant material. Mulch shall be spread evenly to a settled depth of 4" around all trees and shrubs to the limits of the planting beds as shown on plans.
 All plantings shall be "watered in" by flooding the backfield hole within the same working day upon which they were planted. All plants shall be adjusted as necessary to ensure correct depth of planting, vertical alignment and/or to compensate for settling. Soil shall be firmed around around each plant as final adjustments are made.



Tree Preservation Details
 Not to Scale

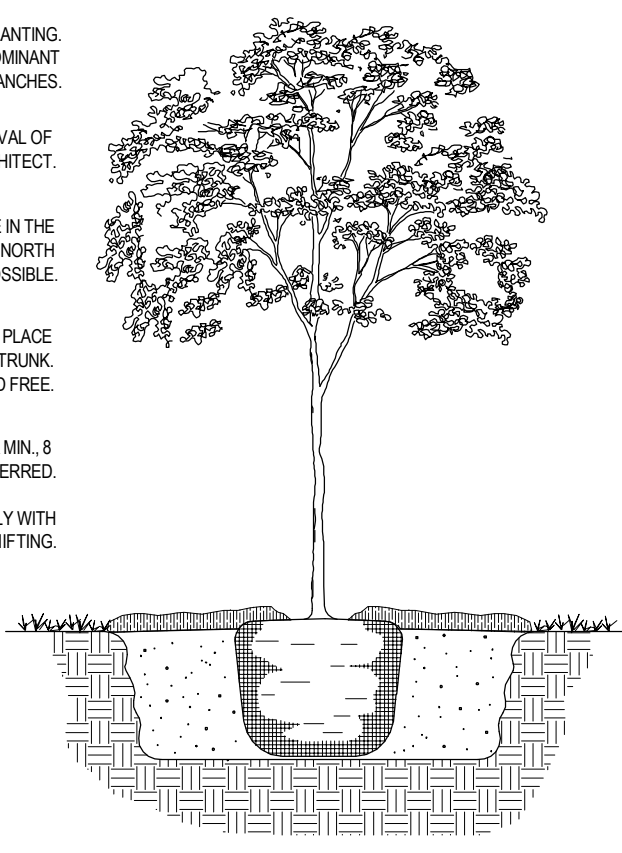
Tree Preservation Notes

- All tree protection fencing shall be installed prior to and maintained throughout the land disturbing and construction process. The fencing shall not be removed until final landscaping is installed.
- Tree protection fencing shall consist of chain link, orange laminated plastic, wooden post, two rail fencing or equivalent restraining material.
- The tree protection area shall include not less than the total area beneath the tree canopy as defined by the dripline of the tree or group of trees. The tree protection area may only be changed with prior approval from the Owner.
- Trenching shall not be allowed within tree protection areas without prior approval from the Owner.
- No soil compaction or any other activity of disturbance is allowed within tree protection areas.
- Posting "Tree Save Area" signs is recommended in tree protection areas. Signs requesting sub-contractor cooperation and compliance with tree protection standards are recommended for site entrances.



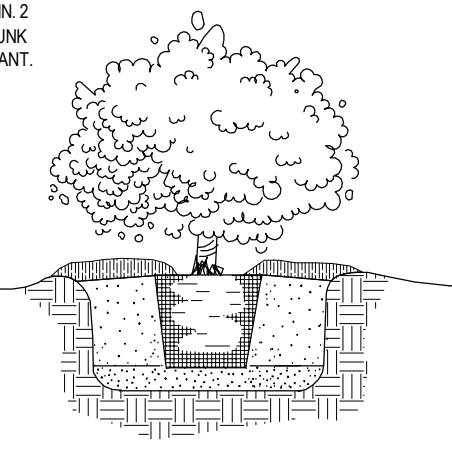
PLANT SPACING DETAIL
 NOT TO SCALE

- DO NOT HEAVILY PRUNE TREE AT PLANTING. PRUNE ONLY CROSSOVER LIMBS, CO-DOMINANT LEADERS, AND BROKEN OR DEAD BRANCHES.
- STAKE TREE ONLY AT THE APPROVAL OF THE LANDSCAPE ARCHITECT.
- MARK THE NORTH SIDE OF THE TREE IN THE NURSERY, AND ROTATE TREE TO FACE NORTH AT THE SITE WHENEVER POSSIBLE.
- 4 INCH DEPTH OF MULCH. DO NOT PLACE MULCH IN CONTACT WITH TREE TRUNK. MAINTAIN THE MULCH WEED FREE.
- MULCH RING TO BE 8 INCH DIAMETER MIN., 8 INCH DIAMETER PREFERRED.
- TAMP SOIL AROUND ROOT BALL FIRMLY WITH FOOT PRESSURE TO PREVENT SHIFTING.



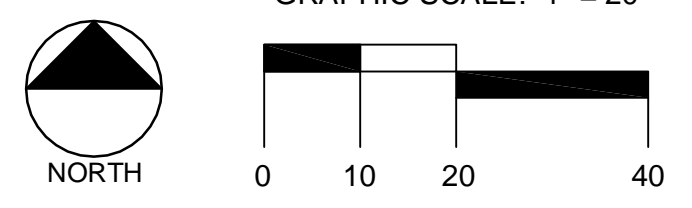
TREE PLANTING DETAIL
 NOT TO SCALE

- REMOVE ALL TAGS, TWINE OR OTHER NON-BIODEGRADABLE MATERIALS ATTACHED TO THE PLANT OR ROOT MASS.
- PRUNE PLANT TO REMOVE DEAD OR BROKEN BRANCHES.
- 4 INCH DEPTH OF MULCH. DO NOT PLACE MULCH IN CONTACT WITH PLANT TRUNK. MAINTAIN THE MULCH WEED FREE.
- MULCH SHALL BE KEPT MIN. 2 INCHES AWAY FROM TRUNK OF PLANT.



SHRUB PLANTING DETAIL
 NOT TO SCALE

- PLANT PIT TO BE AT LEAST 2X WIDER THAN ROOT BALL. SCARIFY AND ANGLE SIDES OF THE HOLE.
- REMOVE CONTAINER FROM ROOT MASS. LOOSEN ROOTS FROM POTBOUND PLANTS BY SCORING OR PULLING DAMPEN SOIL PRIOR TO PLANTING.
- BACKFILL HOLE WITH THOROUGH MIXTURE OF 1 PT. SAND, 1 PT. ORGANIC HUMUS, 1 PT. NATIVE TOPSOIL.
- AMENDMENTS SHALL BE ADDED TO SOIL BASED ON RESULTS OF SOIL TESTS.
- PLACE BOTTOM OF ROOT BALL ON ON TAMPED SOIL THAT HAS BEEN SETTLED WITH WATER.
- PLANT SOIL LEVEL SHALL BE 1" HIGHER THAN SURROUNDING GRADE.
- TAMP SOIL AROUND ROOT BALL LIGHTLY WITH FOOT OR HAND PRESSURE TO PREVENT SHIFTING.
- PROVIDE DRAINAGE IN PLANTING PIT AS DEEMED NECESSARY BY A SOIL PERCOLATION TEST.



CALL BEFORE YOU DIG : 811