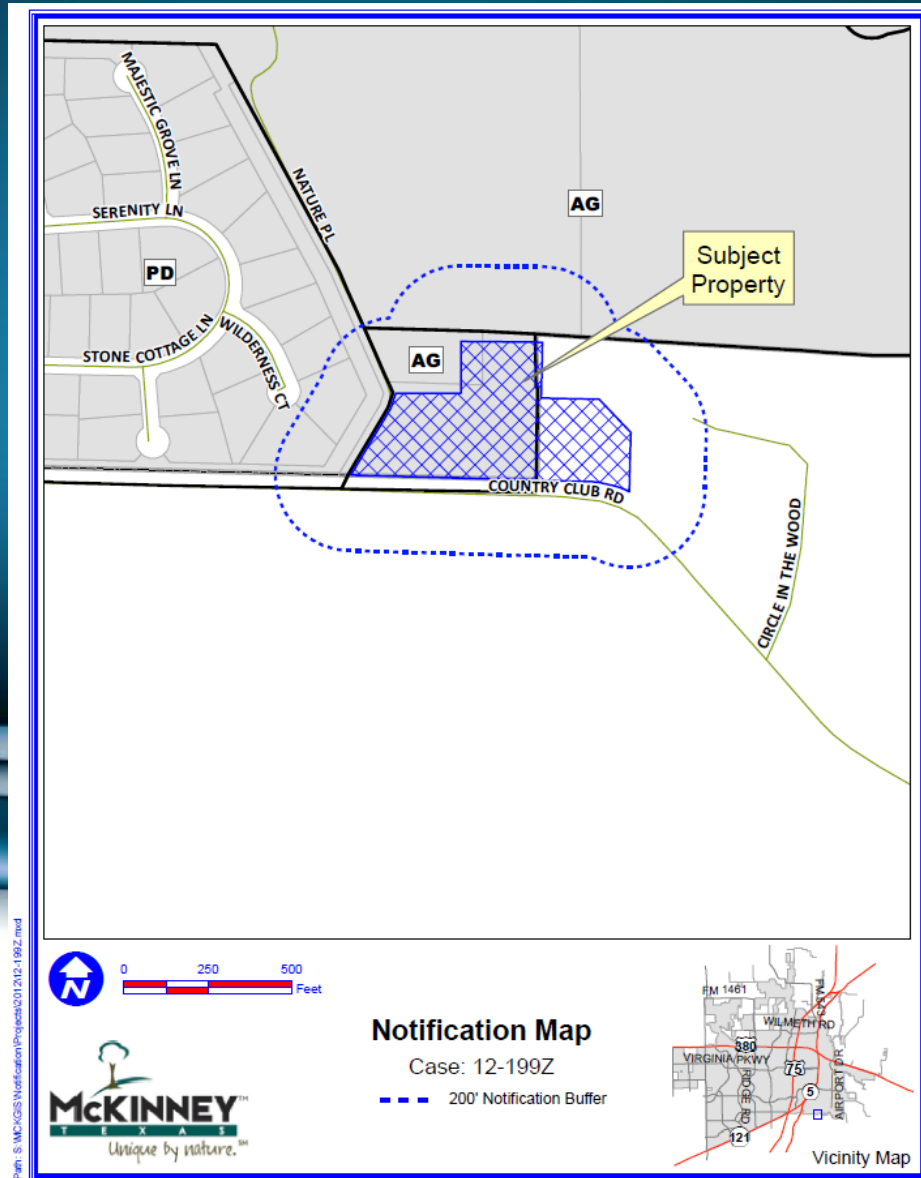


# Case No. 12-199Z

Located on the Northeast Corner of Country Club  
Road and Nature Place



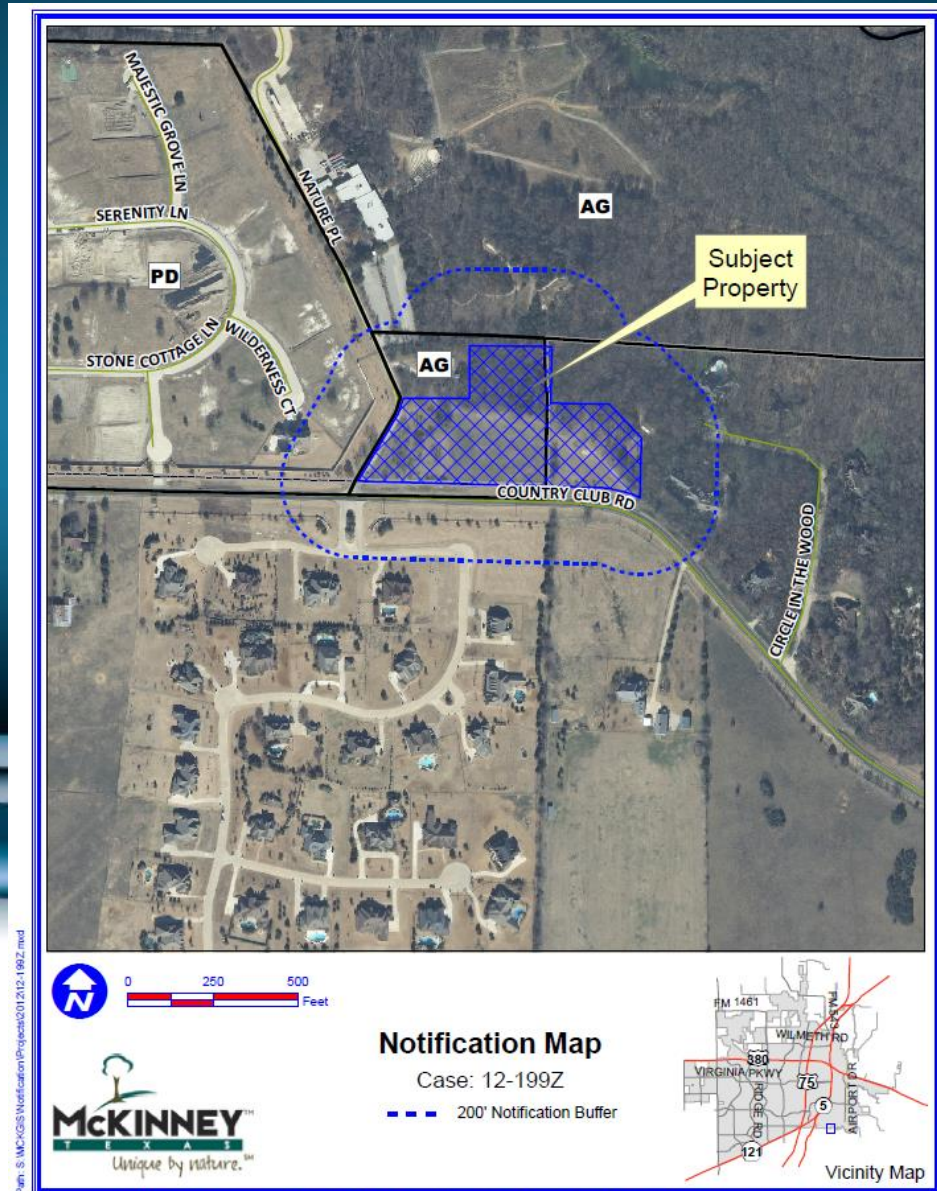
# Location Map



P:\m\_s\_mckgis\Notification\Projects\2012\12-199Z.mxd

DISCLAIMER: This map and information contained in it were developed exclusively for use by the City of McKinney. Any use or reliance on this map by anyone else is at that party's risk and without liability to the City of McKinney, its officials or employees for any discrepancies, errors, or variances which may exist.

# Aerial Exhibit

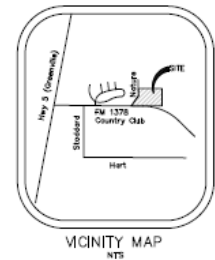
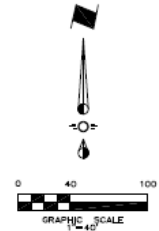
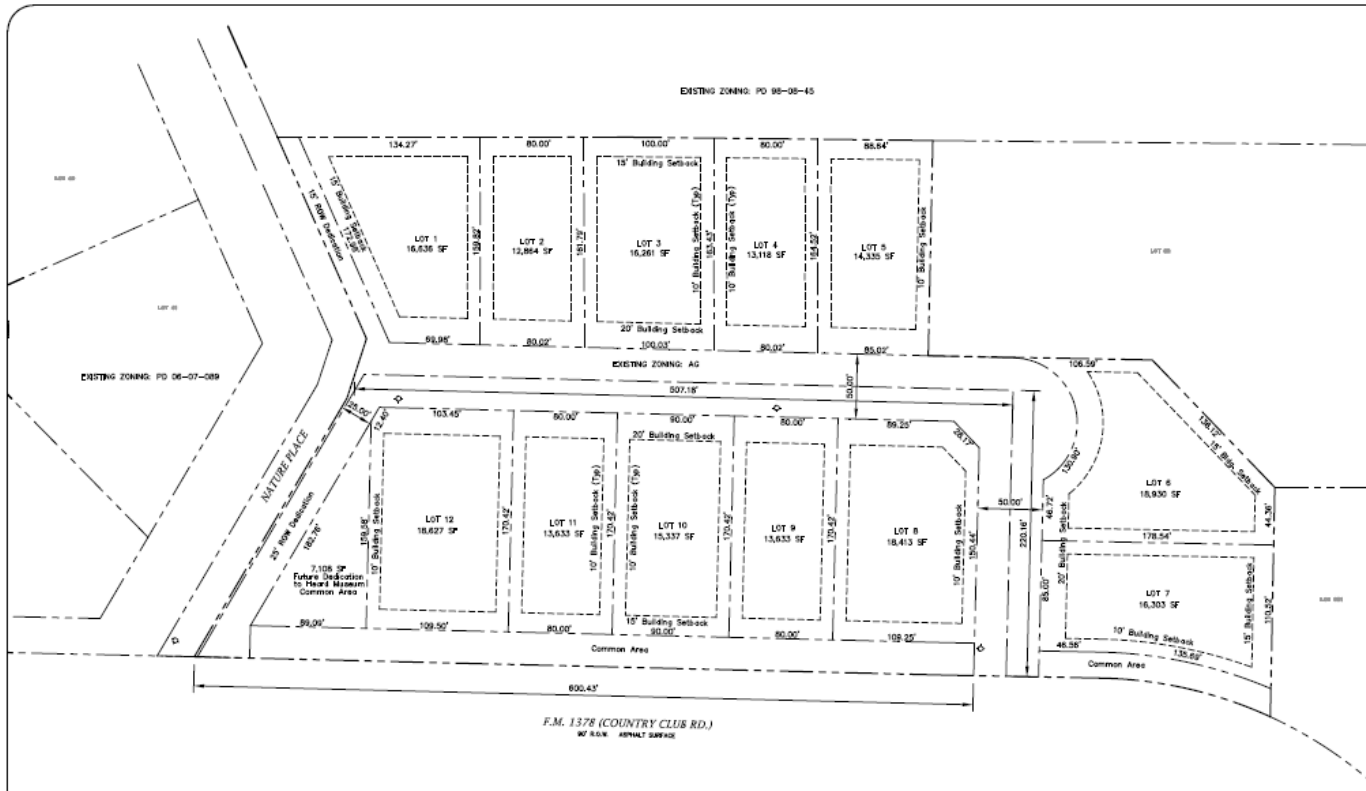


Path: S:\MCKGIS\Notification\Projects\001\212-199Z.mxd



DISCLAIMER: This map and information contained in it were developed exclusively for use by the City of McKinney. Any use or reliance on this map by anyone else is at that party's risk and without liability to the City of McKinney, its officials or employees for any discrepancies, errors, or variances which may exist.

# Proposed Zoning Exhibit



**SITE DATA TABLE**

Zoning:  
Existing: AG  
Proposed: PD for Single Family

Area Information:  
5.93 Acres located in the City of McKinney, Collin County, Texas.

RECEIVED  
By Kathy Wright at 12:23 pm, May 23, 2013

Issue Date	Justification	Date
1		
2		
3		
4		
5		
6		

**CROSS ENGINEERING CONSULTANTS**  
111 S. Tarrant St. McKinney, Texas 75069  
754-262-9279

Drawn By: C.S.C.I. Checked By: C.S.C.I. Scale: 1"=50'

Zoning Exhibit	Sheet No.
Honey Creek Addition	ZE
M. Hart Survey Abstract No. 447	Project No.
City of McKinney, Texas	12116-4

# STAFF RECOMMENDATION:

Staff recommends approval of the rezoning request.

