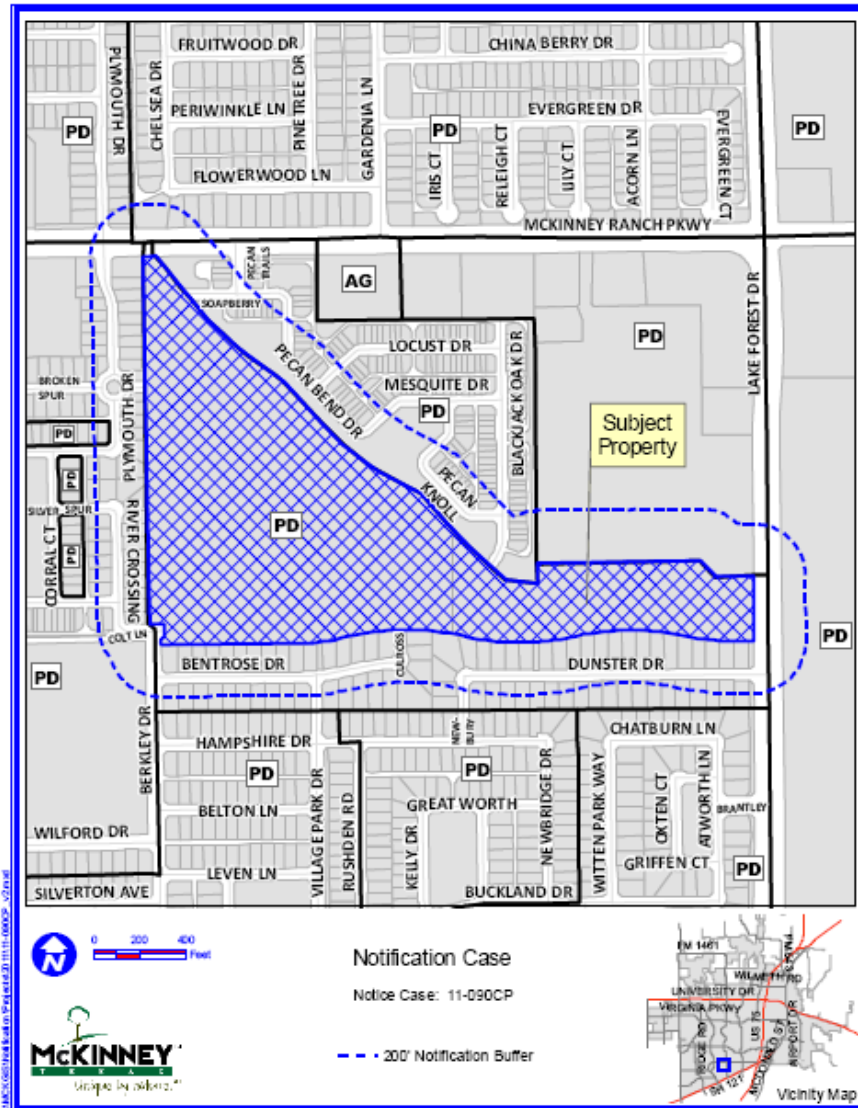


Case No. 11-090CP

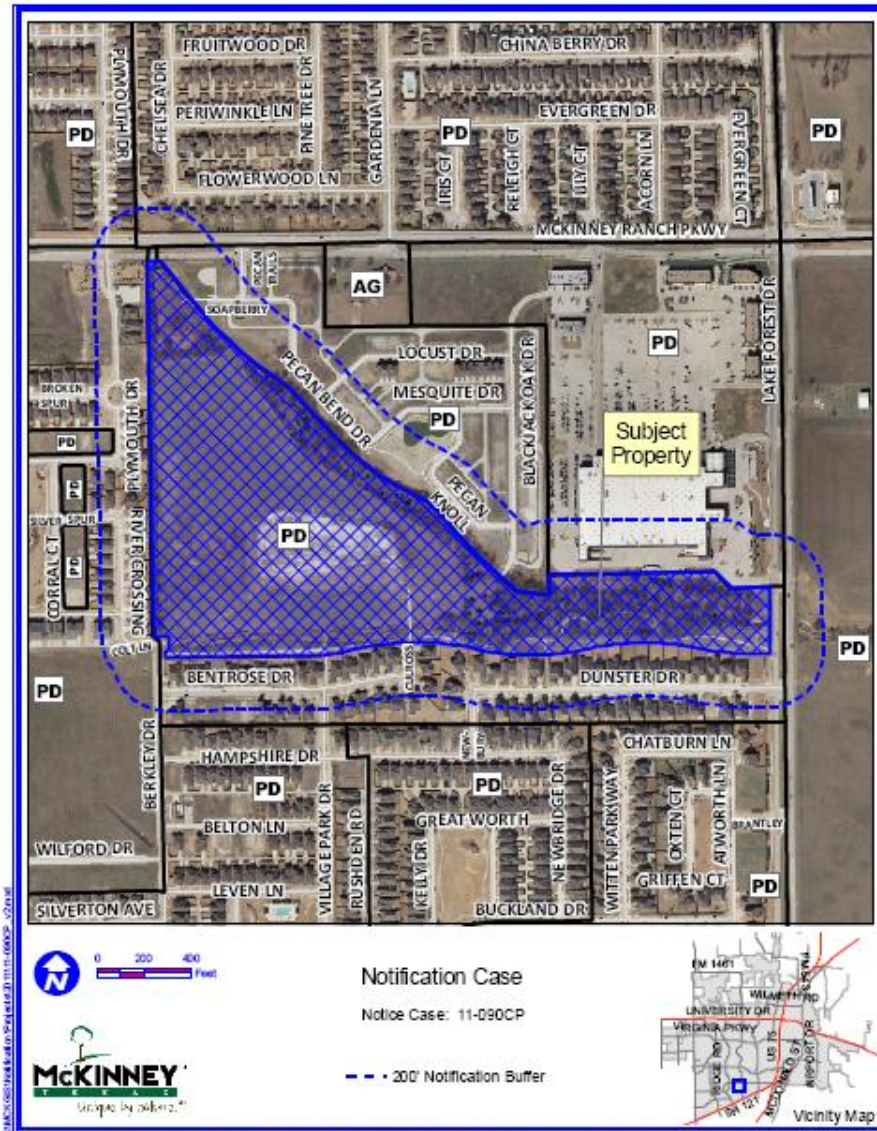
Conduct a Public Hearing to Consider/Discuss/Act on the Request by JBI Partners, Inc., on Behalf of McKinney Village Park North, L.P., for Approval of a Concept Plan for The Village Park North, Phases 2A and 2B Addition, Approximately 40.63 Acres, Located on the Northeast Corner of Colt Lane and Larkspur Drive.

Location Map

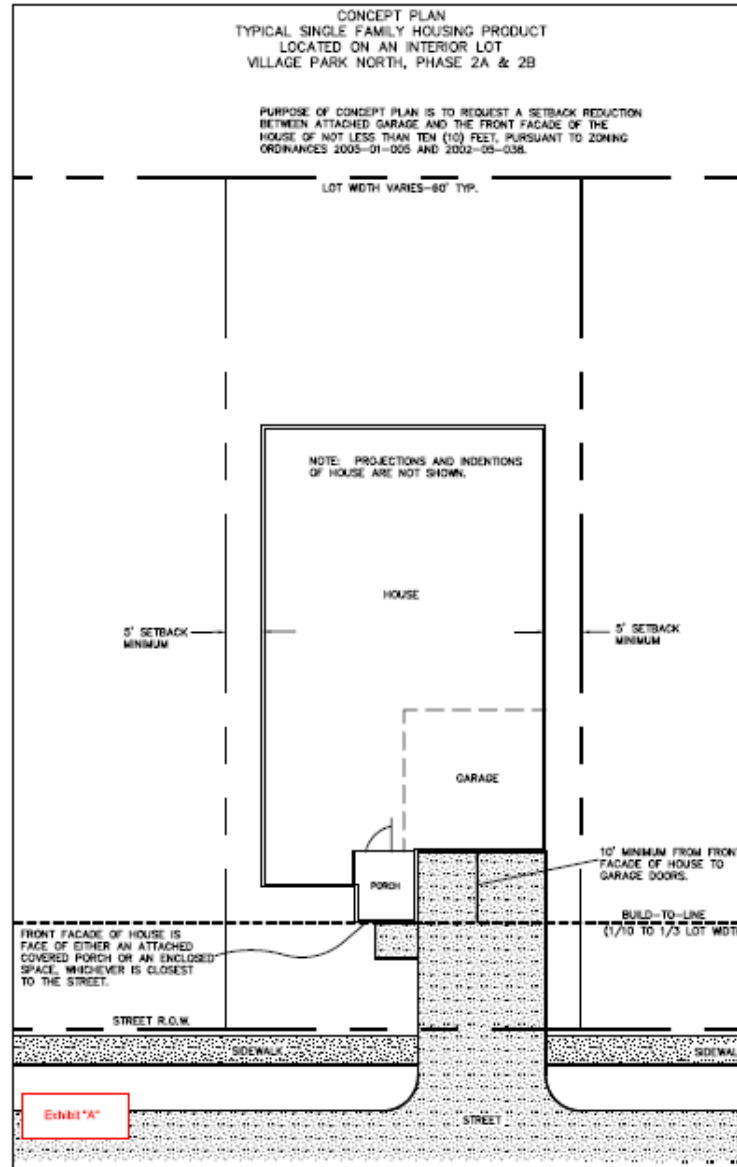


DISCLAIMER: This map and information contained in it were developed exclusively for use by the City of McKinney. Any use or reliance on this map by anyone else is at that party's risk and without liability to the City of McKinney, its officials or employees for any discrepancies, errors, or omissions which may exist.

Aerial Exhibit



Proposed Exhibit "A"



Proposed Exhibit "B"

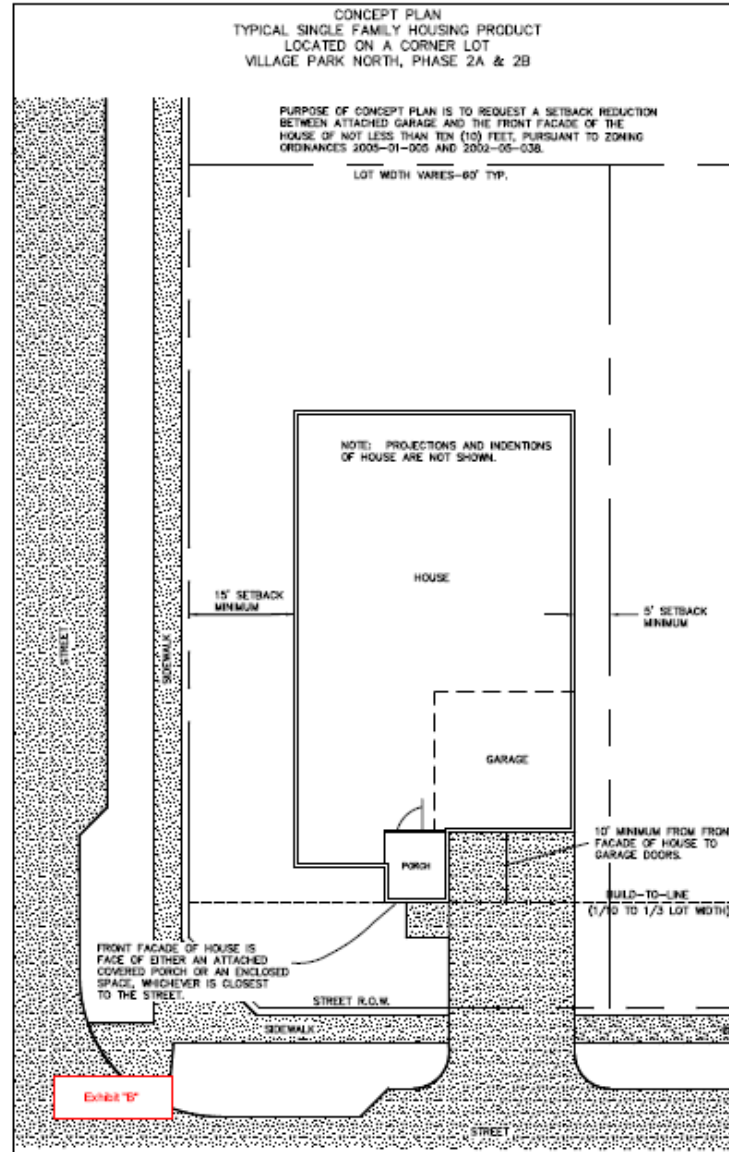


EXHIBIT "B"

Staff Recommendation

- Staff recommends approval of the concept plan as outlined in the Staff Report