

# Case No. 12-101SP

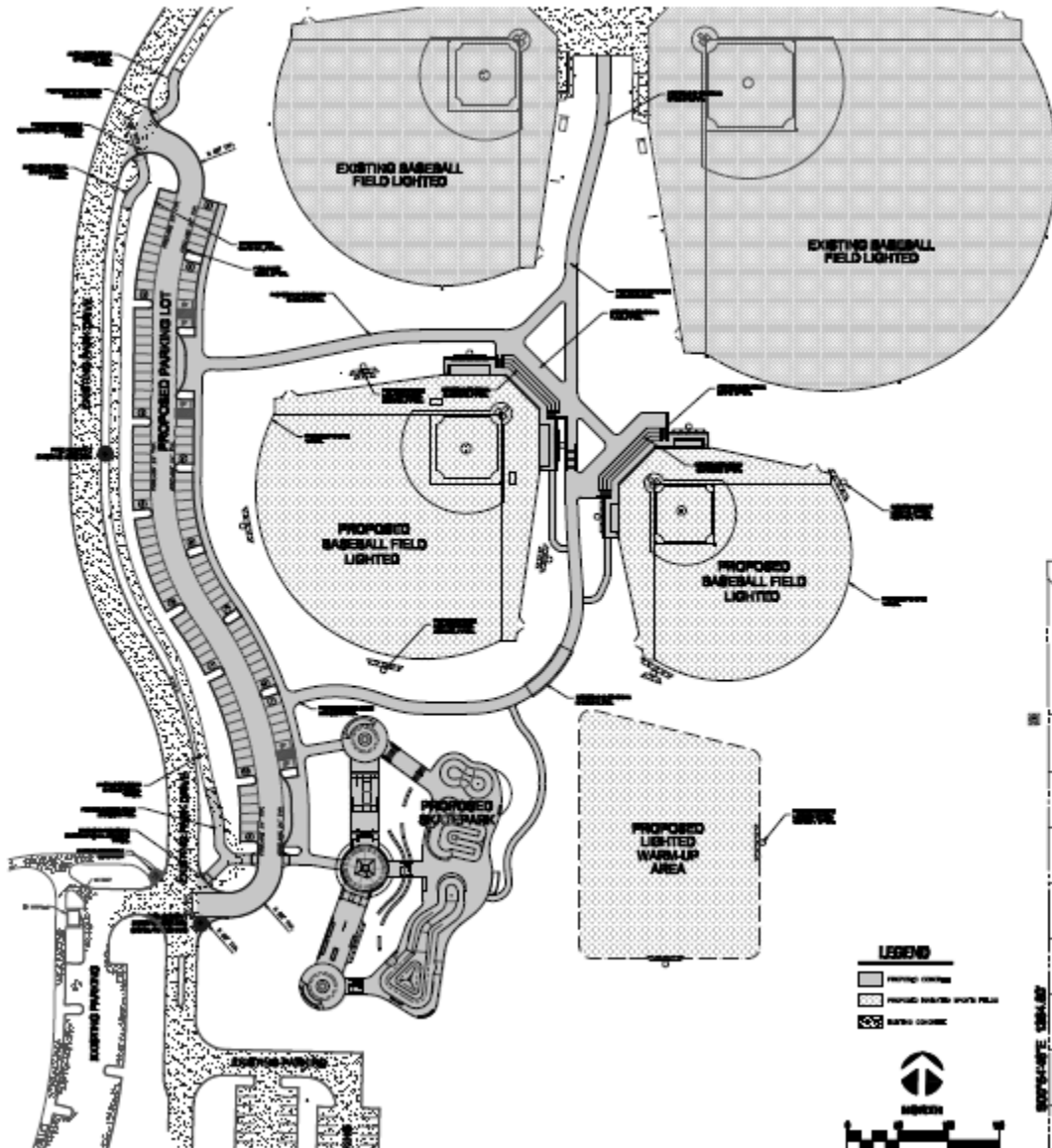
Conduct a Public Hearing to Consider/Discuss/Act on the Request by the City of McKinney, for Approval of a Site Plan for Two Baseball Fields and a Skatepark (Gabe Nesbitt Community Park), Approximately 160.00 Acres, Located on the Southeast Corner of Eldorado Parkway and Alma Road.



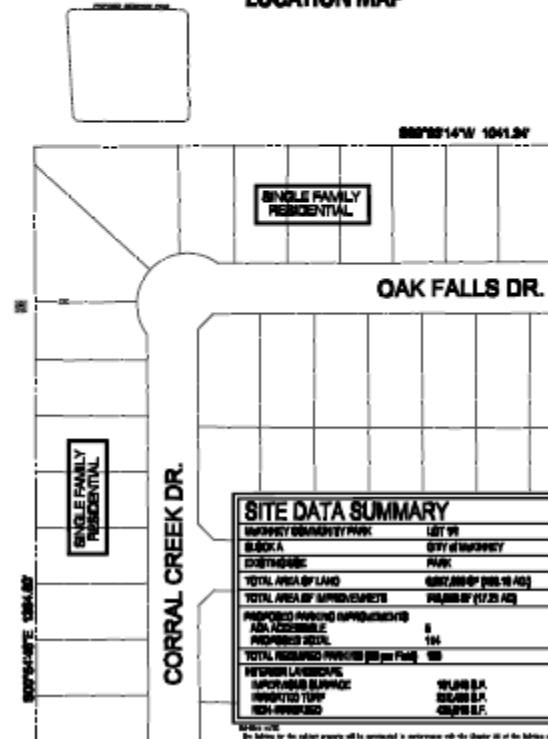
# Aerial Exhibit



# Proposed Site Plan



LOCATION MAP



**GABE NESBITT COMMUNITY PARK  
BASEBALL & SKATEPARK**  
CITY OF MCKINNEY, PARKS, RECREATION  
AND OPEN SPACE DEPARTMENT

DATE: MAY 26, 2012  
THIS SITE PLAN  
NO: SP-1

© 2012 LANARC DESIGN, INC. ALL RIGHTS RESERVED. THIS PLAN IS THE PROPERTY OF LANARC DESIGN, INC. AND IS NOT TO BE REPRODUCED OR TRANSMITTED IN ANY FORM OR BY ANY MEANS, ELECTRONIC OR MECHANICAL, INCLUDING PHOTOCOPYING, RECORDING, OR BY ANY INFORMATION STORAGE AND RETRIEVAL SYSTEM, WITHOUT THE WRITTEN PERMISSION OF LANARC DESIGN, INC.





# Staff Recommendation

- Staff recommends approval of the site plan as outlined in the Staff Report