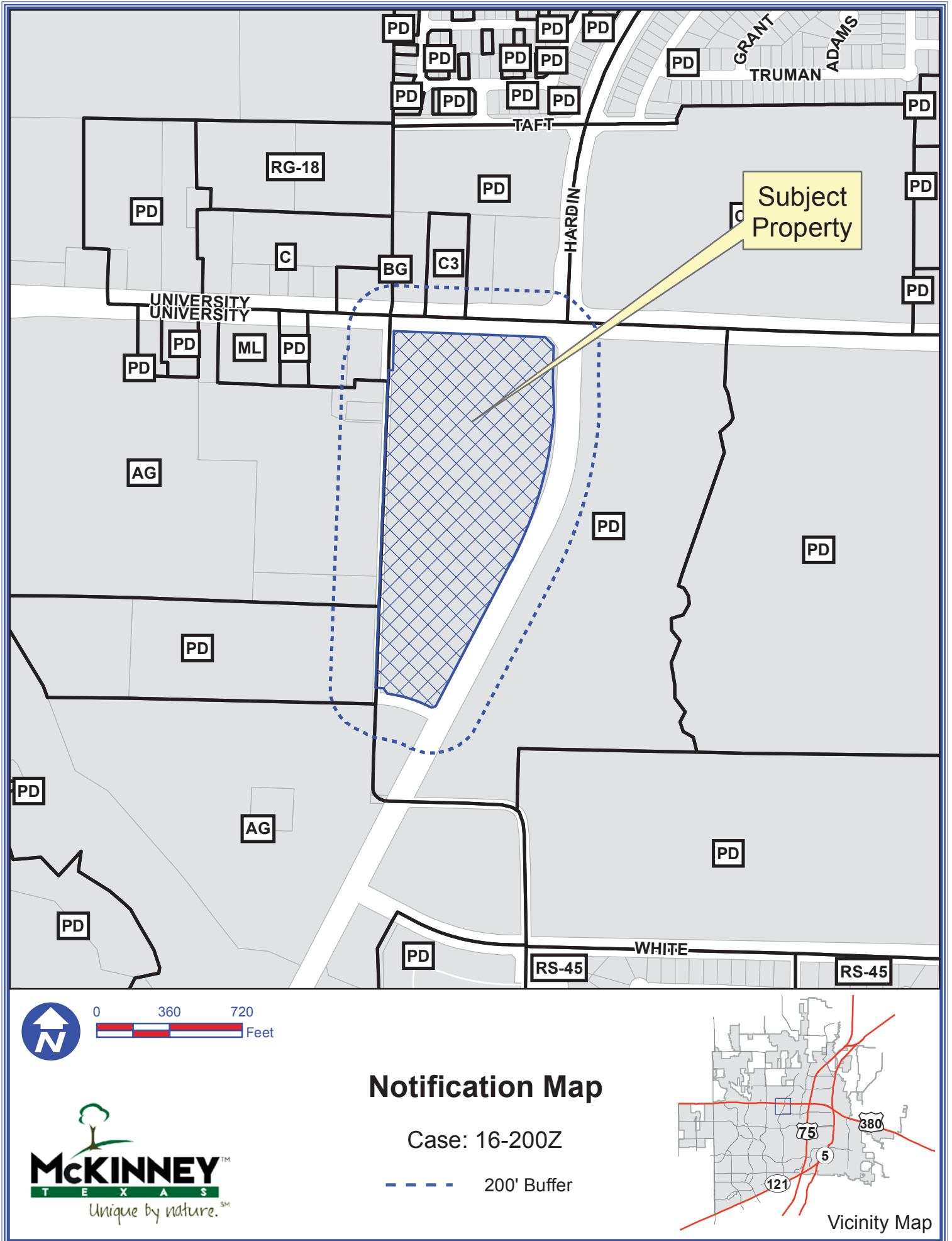


# EXHIBIT A

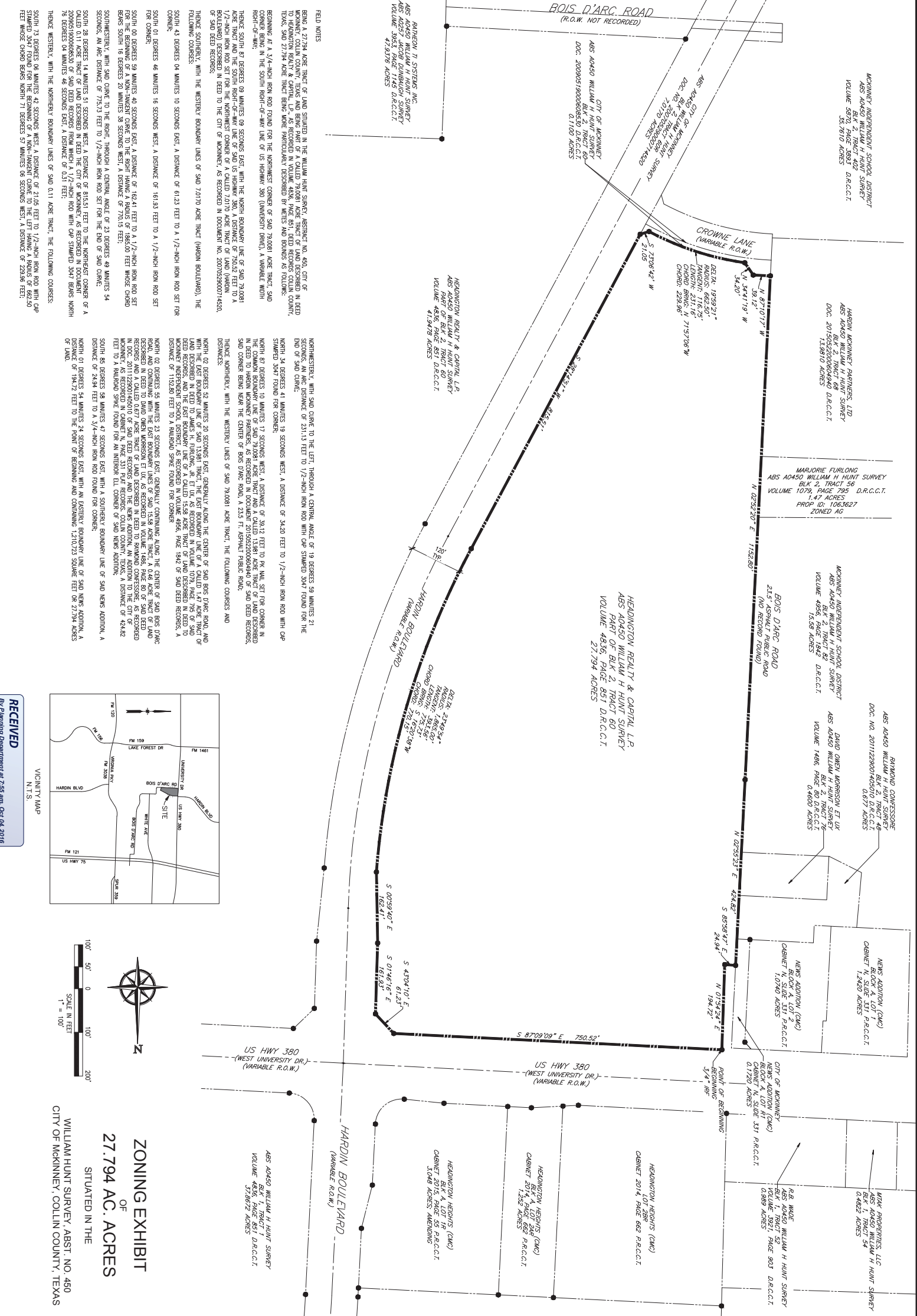


Path: S:\MCKGIS\Notification\Projects\2016\16-200Z.mxd

DISCLAIMER: This map and information contained in it were developed exclusively for use by the City of McKinney. Any use or reliance on this map by anyone else is at that party's risk and without liability to the City of McKinney, its officials or employees for any discrepancies, errors, or variances which may exist.

# EXHIBIT B

PLOT DATE: Wednesday, September 21, 2016 11:53 AM  
 FILE NAME: Z:\2015\15-13 380 Commons @ Headington Heights, McKinney, TX\Civil\Drawings\Sheets\Exhibits  
 FILE PATH: P:\2015\15-13 380 Commons @ Headington Heights, McKinney, TX\Civil\Drawings\Sheets\Exhibits



**ZONING EXHIBIT**  
 OF  
**27.794 AC. ACRES**  
 SITUATED IN THE  
 CITY OF MCKINNEY, COLLIN COUNTY, TEXAS

DATE: SEPTEMBER 23, 2016	DRAWING TITLE: ZONING EXHIBIT
SCALE: 1" = 100'	DRW NUMBER: 15-13
<b>ZE</b>	

**Cabr  Associates**  
 Development & Engineering Consultants  
 201 Long Prairie, Suite 102-222  
 McKinney, TX 75069  
 T 214-513-8744  
 www.Cabr Associates.com

**380 COMMONS**  
 @ **HEADINGTON HEIGHTS**  
 SWC WEST UNIVERSITY DRIVE AND HARDIN BLVD.  
 CITY OF MCKINNEY  
 COLLIN COUNTY, TEXAS

**THE SETZ GROUP**  
 DEVELOPMENT & SALE OF REAL ESTATE PROPERTIES  
 1110 COWAN RD.  
 CELINA, TX 75009