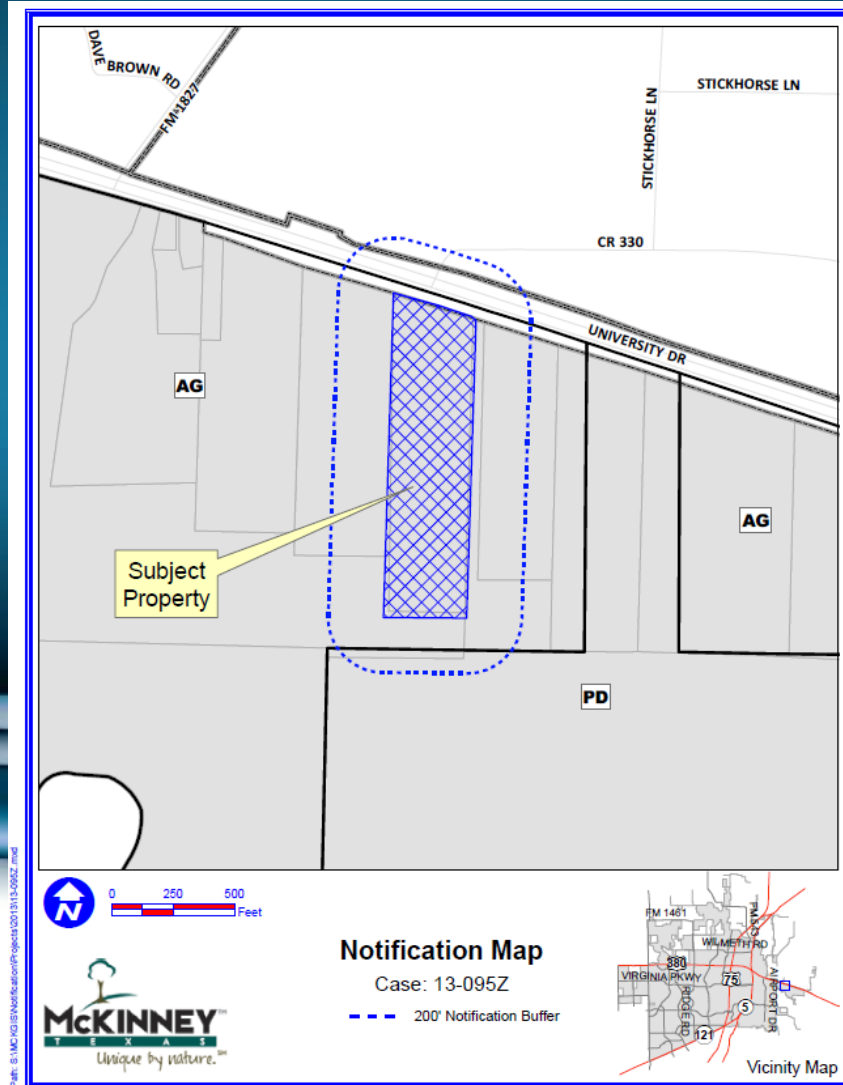


# Case No. 13-095Z

Located on the South Side of U.S. Highway 380  
(University Drive) and Approximately 1,200 Feet East  
of C.R. 1827 (New Hope Road)



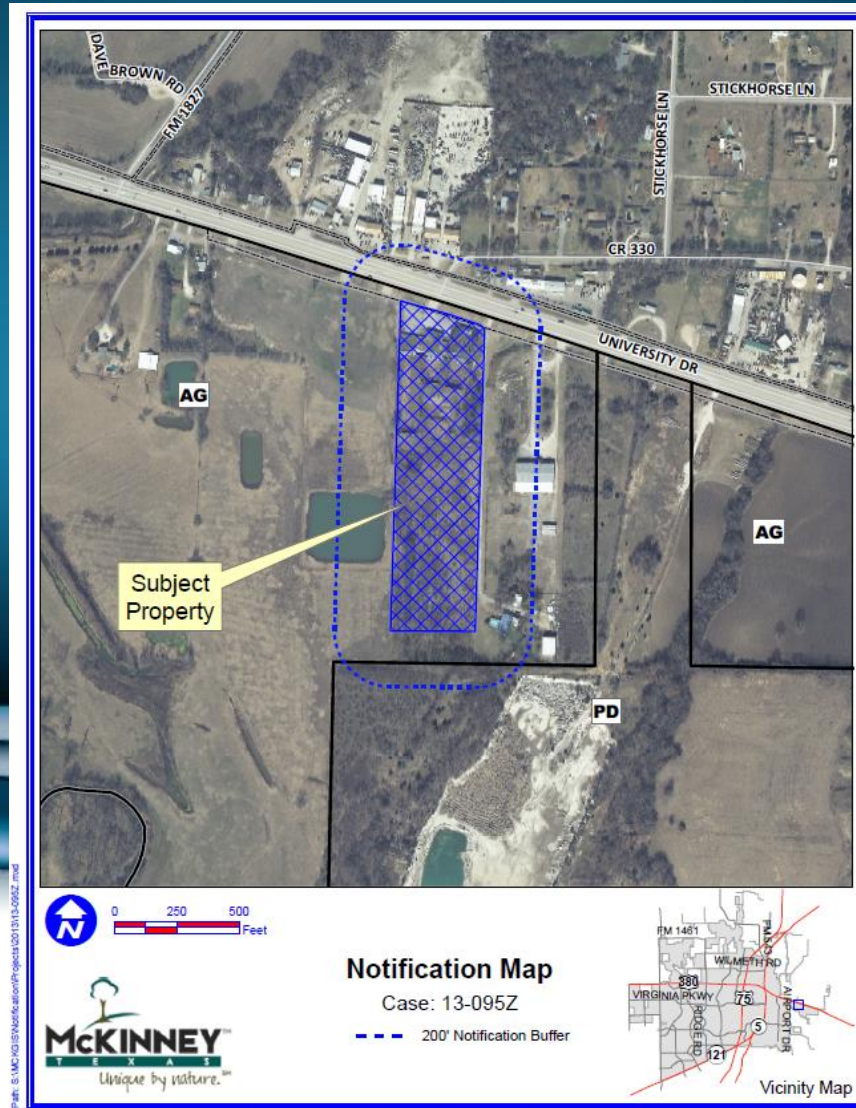
# Location Map



Path: S:\MCO\Notification\Projects\1313-095Z.mxd

DISCLAIMER: This map and information contained in it were developed exclusively for use by the City of McKinney. Any use or reliance on this map by anyone else is at that party's risk and without liability to the City of McKinney, its officials or employees for any discrepancies, errors, or variances which may exist.

# Aerial Exhibit



Path: S:\MCK\GIS\Projects\GIS\Projects\13-095Z.mxd

DISCLAIMER: This map and information contained in it were developed exclusively for use by the City of McKinney. Any use or reliance on this map by anyone else is at that party's risk and without liability to the City of McKinney, its officials or employees for any discrepancies, errors, or variances which may exist.





# STAFF RECOMMENDATION:

Staff recommends approval of the rezoning request.

