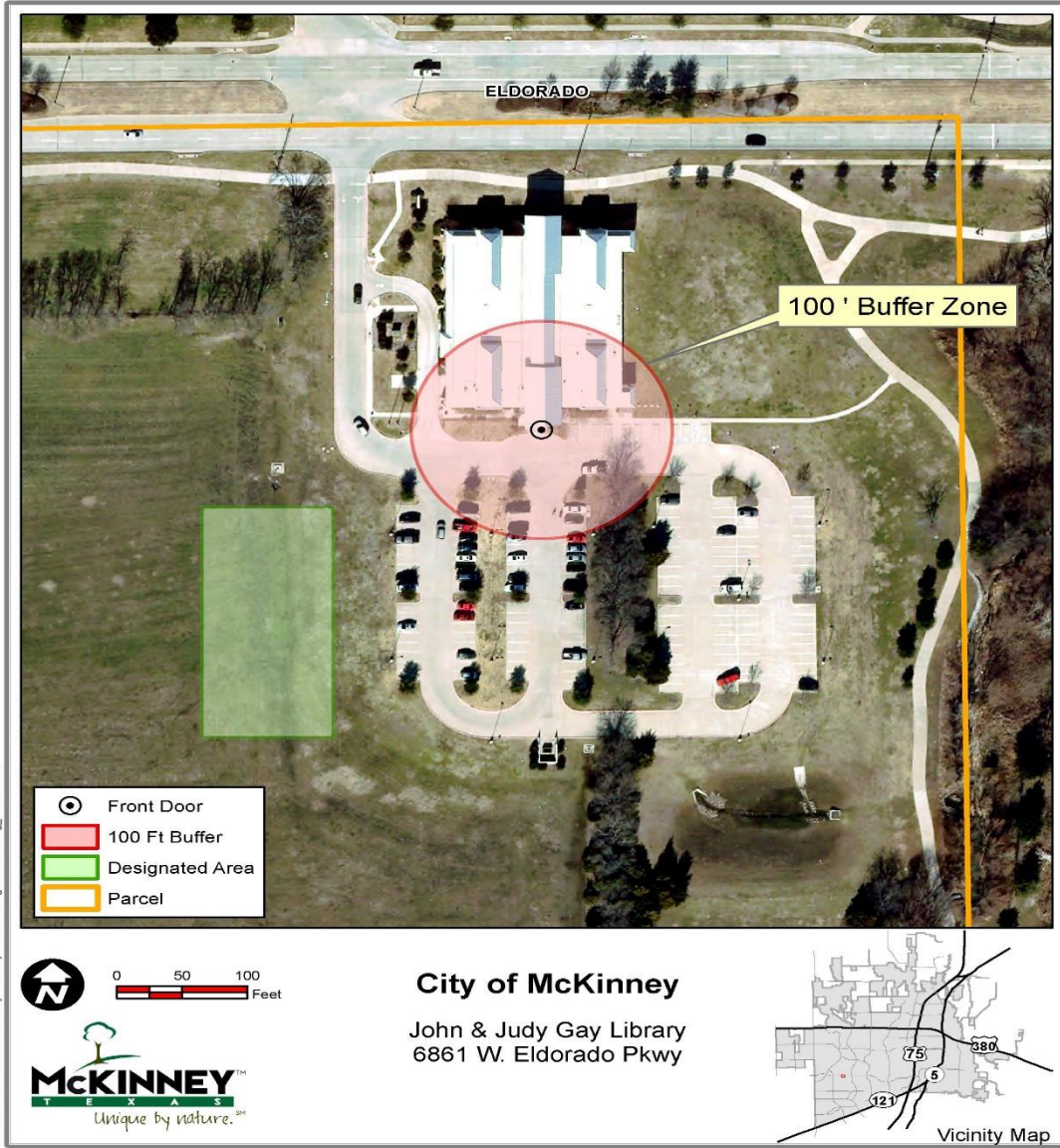


# ELECTIONEERING



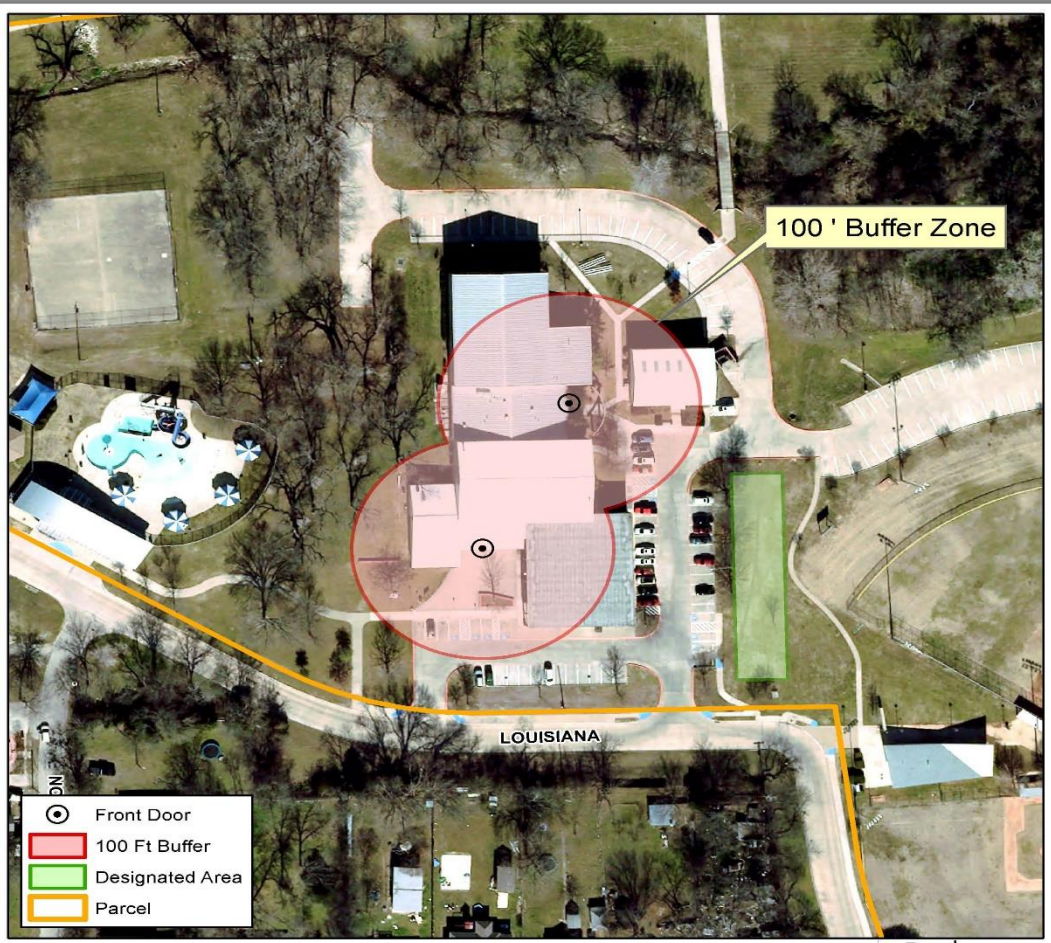
# Proposed Regulations

- The proposed Ordinance will align with the MISD and Collin College election guidelines.
- Electioneering on City owned property is limited only to the City owned or controlled public property where the voting is conducted and only during the voting periods.
- Electioneering on City owned or controlled property will be limited to the Designated Area for Electioneering.



DISCLAIMER: This map and information contained in it were developed exclusively for use by the City of McKinney. Any use or reliance on this map by anyone else is at that party's risk and without liability to the City of McKinney, its officials or employees for any discrepancies, errors, or variances which may exist.

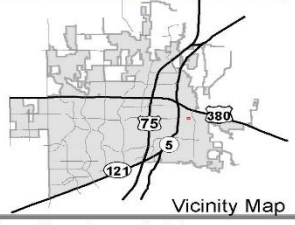




- Front Door
- 100 Ft Buffer
- Designated Area
- Parcel



**City of McKinney**  
 Old Settler's Recreation Center  
 2101 E. Louisiana St



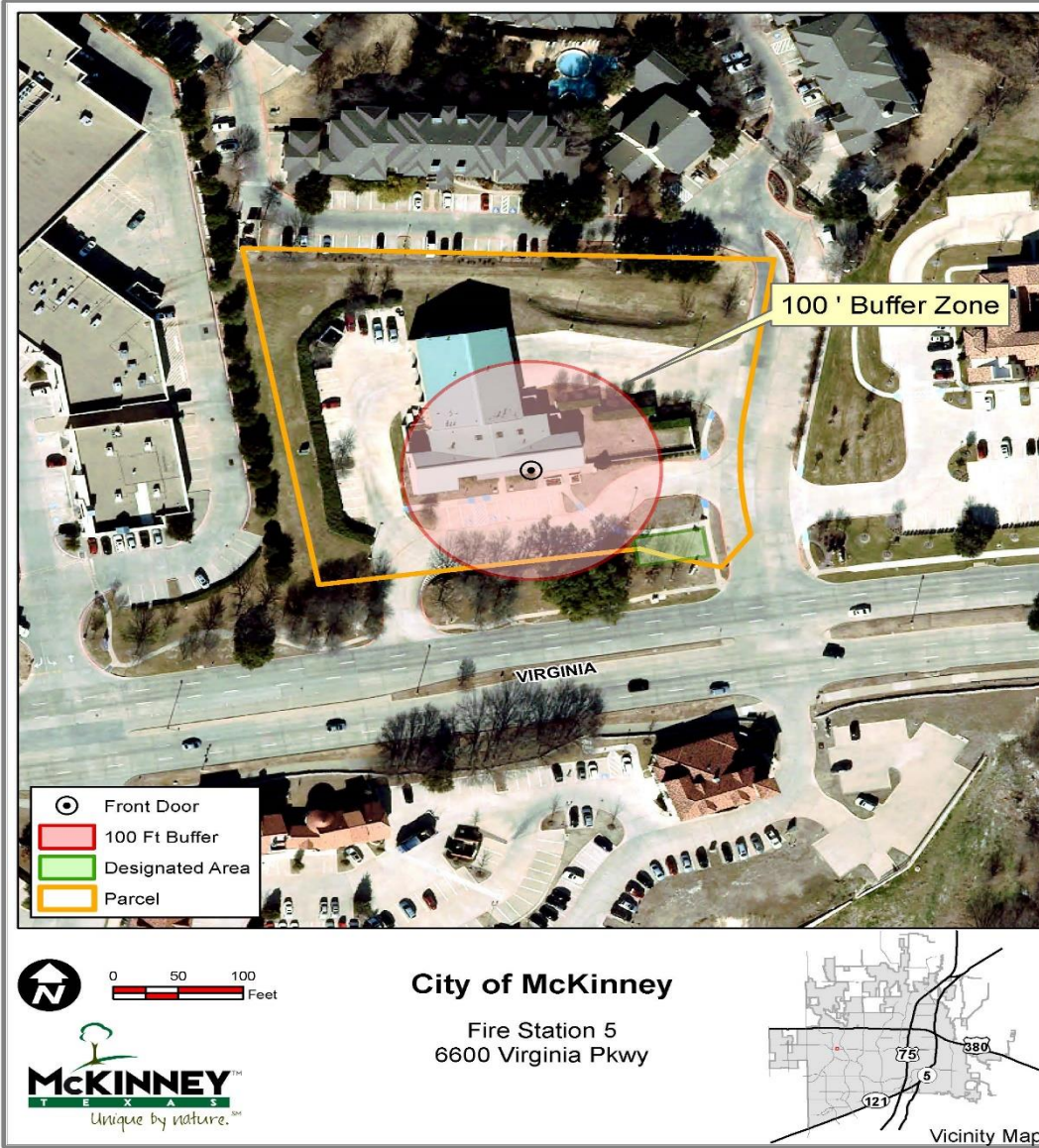
Path: Y:\GIS\Info\Roads\City\Secretary\Electrifying\Engineering\_Exhibits.mxd

DISCLAIMER: This map and information contained in it were developed exclusively for use by the City of McKinney. Any use or reliance on this map by anyone else is at that party's risk and without liability to the City of McKinney, its officials or employees for any discrepancies, errors, or variances which may exist.





Path: Y:\GIS\GIS\Work\Road\City\Secretary\Electroengineering\Exhibits.mxd

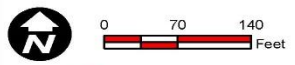


DISCLAIMER: This map and information contained in it were developed exclusively for use by the City of McKinney. Any use or reliance on this map by anyone else is at that party's risk and without liability to the City of McKinney, its officials or employees for any discrepancies, errors, or variances which may exist.

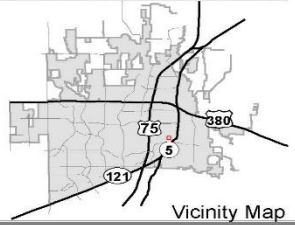




- Front Door
- 100 Ft Buffer
- Designated Area
- Parcel



**City of McKinney**  
 Senior Center  
 1400 S. College St.



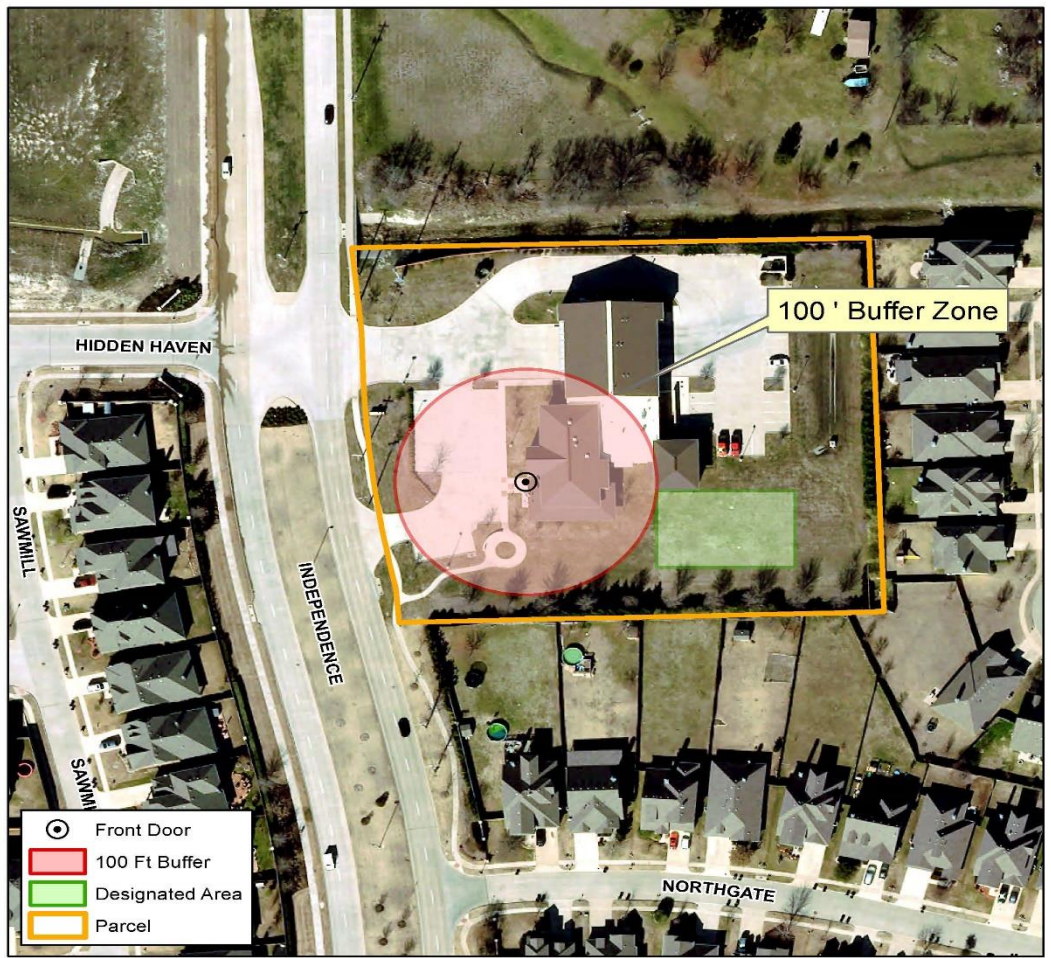
Path: Y:\GIS\GIS\Work\Prop\CitySecretary\Electroengr\Exhibits.mxd

DISCLAIMER: This map and information contained in it were developed exclusively for use by the City of McKinney. Any use or reliance on this map by anyone else is at that party's risk and without liability to the City of McKinney, its officials or employees for any discrepancies, errors, or variances which may exist.

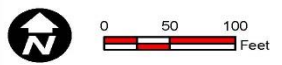




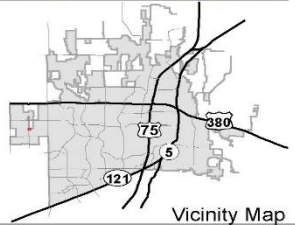
Path: Y:\GIS\GIS\Work\Rease\City\Secretary\Electromer\Electromer\Exhibits.mxd



-  Front Door
-  100 Ft Buffer
-  Designated Area
-  Parcel



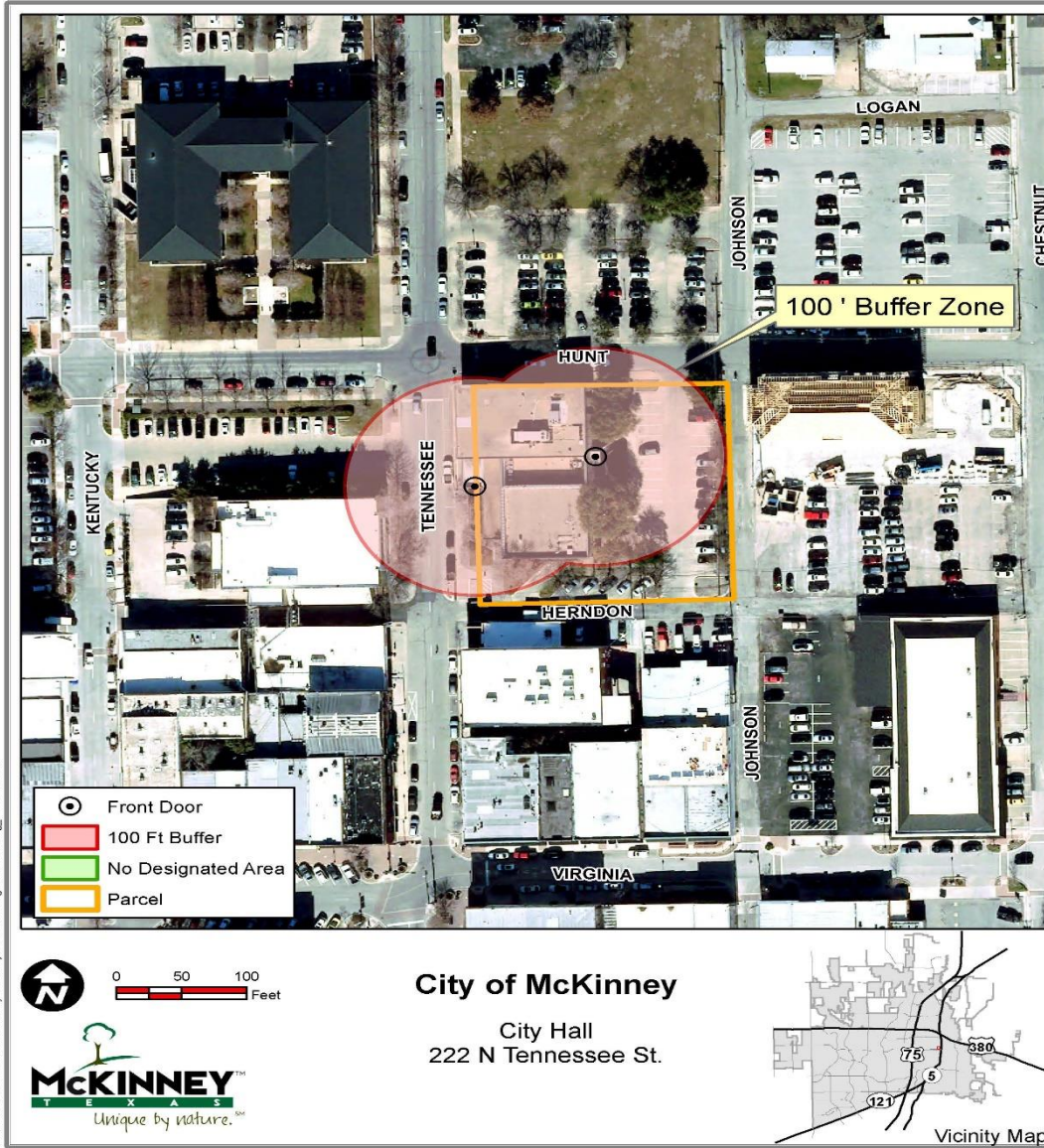
**City of McKinney**  
 Fire Station 7  
 861 S Independence Pkwy



DISCLAIMER: This map and information contained in it were developed exclusively for use by the City of McKinney. Any use or reliance on this map by anyone else is at that party's risk and without liability to the City of McKinney, its officials or employees for any discrepancies, errors, or variances which may exist.



Path: Y:\GIS\Work\Roads\City\Secretary\Electromagnetic\Exhibits.mxd



DISCLAIMER: This map and information contained in it were developed exclusively for use by the City of McKinney. Any use or reliance on this map by anyone else is at that party's risk and without liability to the City of McKinney, its officials or employees for any discrepancies, errors, or variances which may exist.





- Electioneering on private property is allowed with the permission of the property owner.
- The regulations will only apply to City owned or controlled locations:
  - Right of Ways
  - Polling locations (John and Judy Gay Library, Senior Center, Old Settlers Recreation Center, MPAC, City Hall, Fire Station #5, Fire Station #7, and future Fire Station #9).
- Establishes a posting period for election signs (24 hours before the election and removed within 24 hours after the end of a voting period).

## Proposed Regulations contd.

- Signs will be limited to four 2' x 2' signs per candidate or measure at each of the City owned or controlled polling locations.
- Tents, awnings or shelters are not permitted.
- Each location will have a Designated Area for Electioneering where electioneering can take place.
- Electioneering is prohibited on any City owned or controlled property that is not used for a polling location.



# Proposed Regulations contd.

- All signs placed in violation of this Ordinance will be removed and disposed of by City Staff.
- The Ordinance shall be administered and enforced by the City Secretary, a designated election officer, code enforcement official, or law enforcement official.