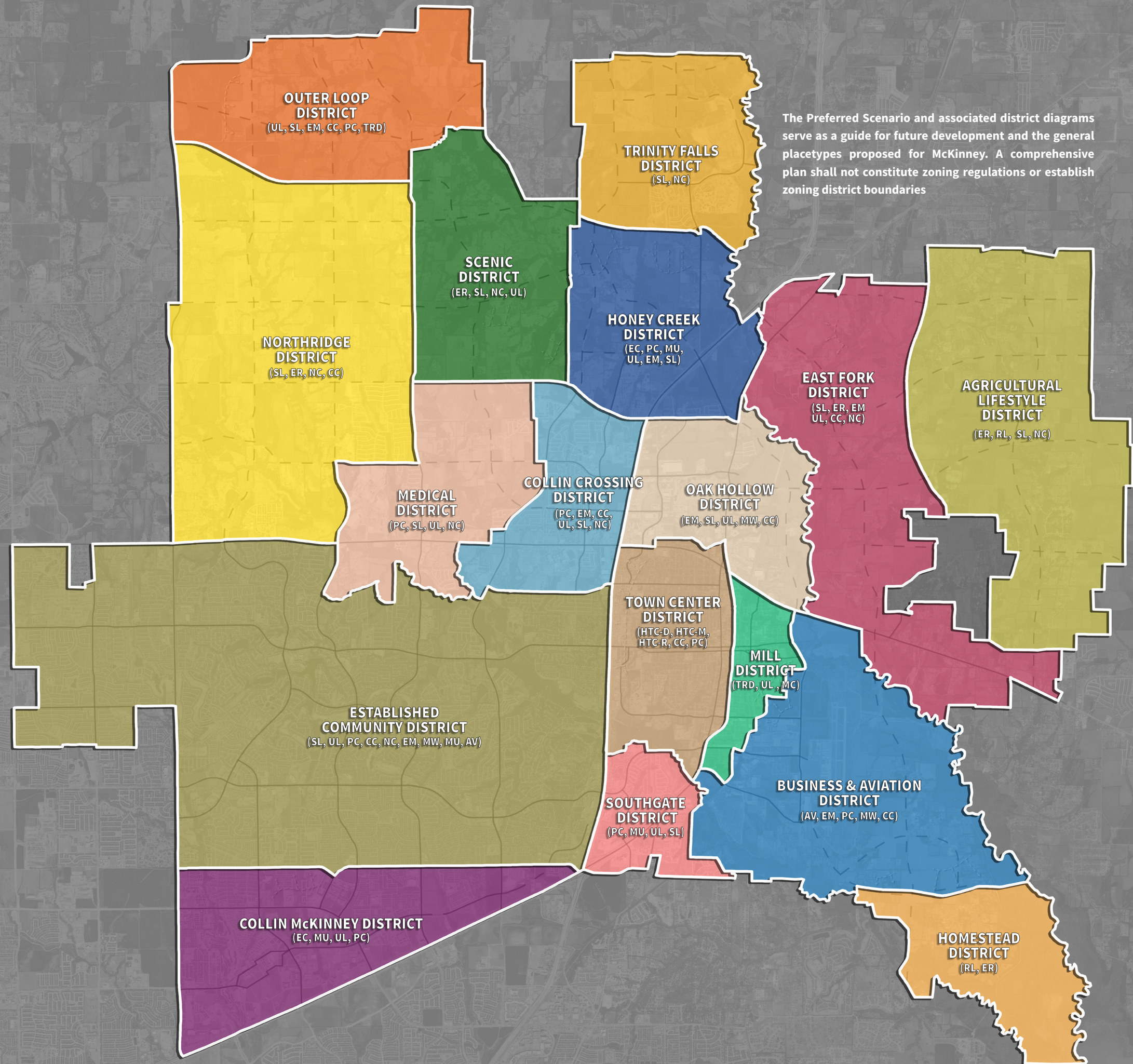


# PREFERRED SCENARIO

## PLACETYPES

- Aviation (AV)
- Commercial Center (CC)
- Employment Mix (EM)
- Entertainment Center (EC)
- Estate Residential (ER)
- Historic Town Center - Downtown (HTC-D)
- Historic Town Center - Mix (HTC-M)
- Historic Town Center - Residential (HTC-R)
- Manufacturing & Warehousing (MW)
- Mixed Use Center (MU)
- Neighborhood Commercial (NC)
- Professional Campus (PC)
- Rural Residential (RR)
- Suburban Living (SL)
- Transit-Ready Development (TRD)
- Urban Living (UL)



# LAND USE DIAGRAM

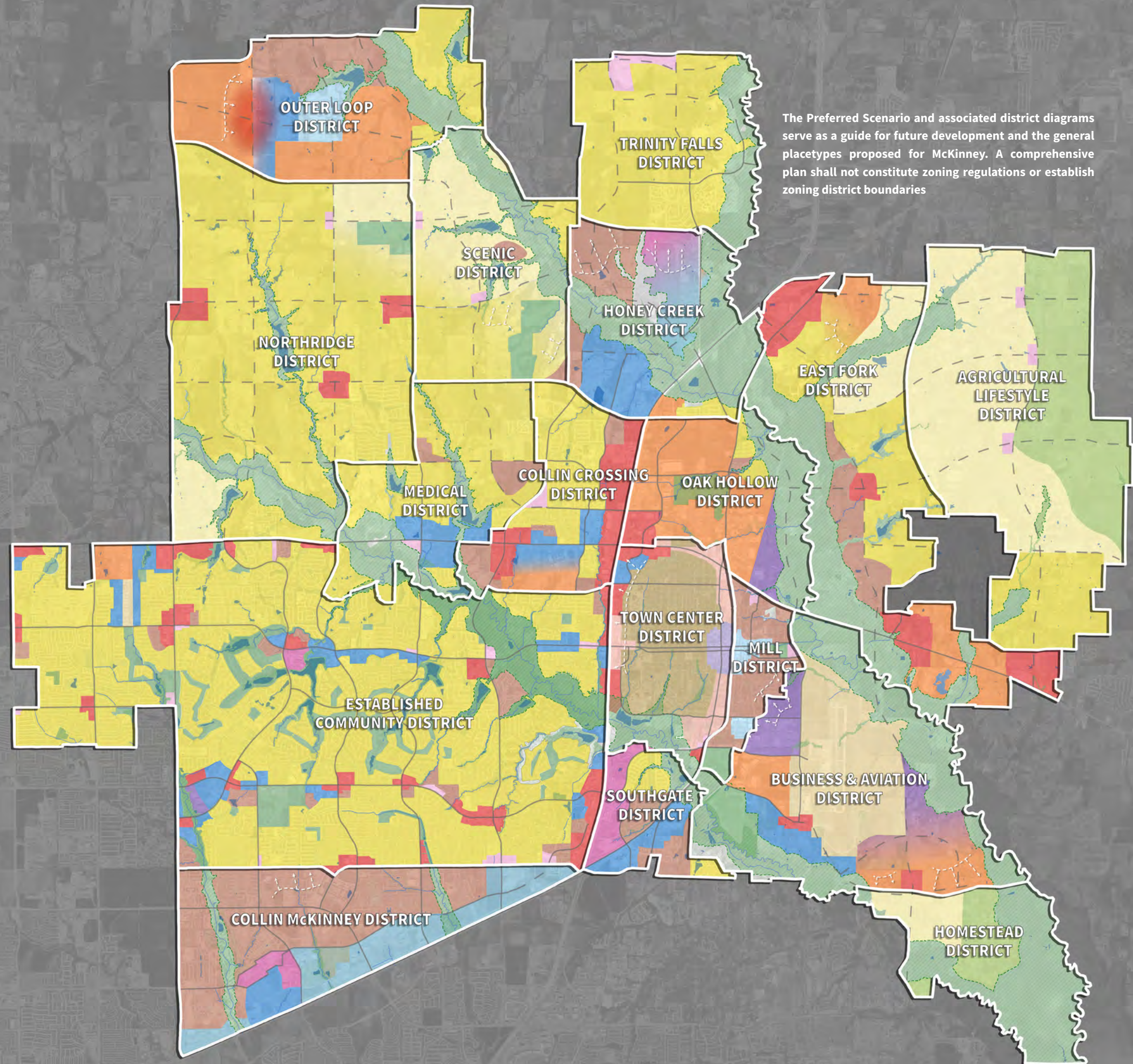
## LEGEND

### Placetypes

- Aviation
- Commercial Center
- Employment Mix
- Entertainment Center
- Estate Residential
- Historic Town Center - Downtown
- Historic Town Center - Mix
- Historic Town Center - Residential
- Manufacturing & Warehousing
- Mixed Use Center
- Neighborhood Commercial
- Professional Campus
- Rural Residential
- Suburban Living
- Transit-Ready Development
- Urban Living

### Other Features

- Floodplain / Amenity Zone
- District Boundary



# MASTER THOROUGHFARE PLAN

## LEGEND

-  Major Regional Highway/Multi-Modal
-  Tollway
-  Principal Arterial (130' - 6 lanes)
-  Major Arterial (124' - 6 lanes)
-  Greenway Arterial (140' - 6 lanes)
-  Greenway Arterial (120' - 4 lanes)
-  Minor Arterial (100' - 4 lanes divided)
-  Minor Arterial (80' - 4 lanes undivided)
-  Minor Arterial (70' - 3 lanes)
-  Town Thoroughfare (2 lanes)
-  Town Thoroughfare (2 lanes one way pairing)
-  McKinney City Limits
-  McKinney ETJ
-  Other Cities

Ord. No. 2018-10-072

Disclaimer: The Master Thoroughfare Plan provides generalized locations for future thoroughfares. Alignments may shift as roads are engineered and designed to accommodate floodplain areas and to meet sound engineering and urban planning principles. The Roadway lines shown on the plan are not precise (site specific) locations of future thoroughfares.

