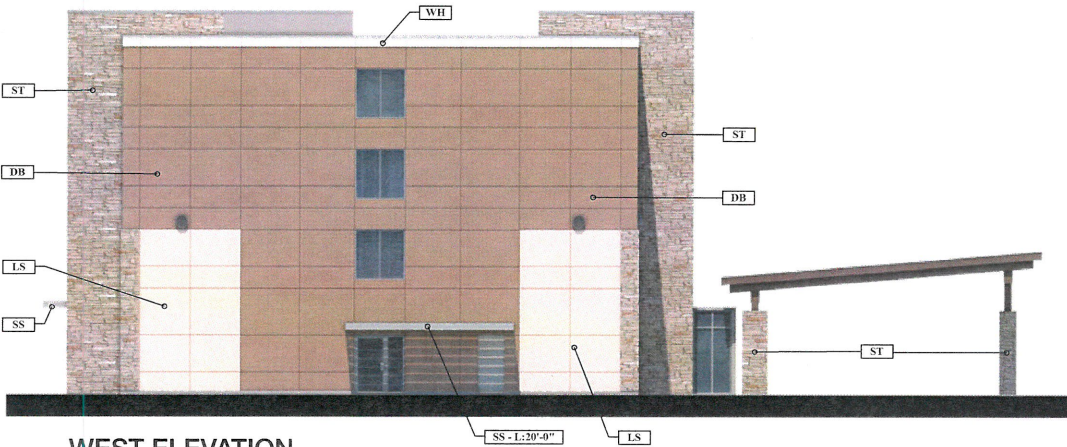




**NORTH ELEVATION**

53.84% STONE TO STUCCO RATIO  
26.17% WDW/DOOR TO SURFACE RATIO



**WEST ELEVATION**

52.30% STONE TO STUCCO RATIO  
8.38% WDW/DOOR TO SURFACE RATIO

**EXTERIOR FINISH LEGEND**

- LS - STUCCO - LS: LIMESTONE/SANDSTONE, MULTI-TEXTURE SURFACE
- LSS - STUCCO - LS: SAND SMOOTH SURFACE
- DB - STUCCO - DB: DARK BRONZE, SAND FINE SURFACE
- RR - STUCCO - RR: RUSTIC RED, SAND SMOOTH SURFACE
- WH - STUCCO - WH: WHITE, SAND SMOOTH SURFACE
- ST - CULTURED STONE, LEDGESTONE SOUTHWEST BLEND
- SS - SUNSHADE: 6" DEEP, "TUBE BLADE" CLEAR ANODIZED ALUM.
- AC - TYPICAL 'PTAK' HVAC WINDOW UNIT.

**NOTES:**

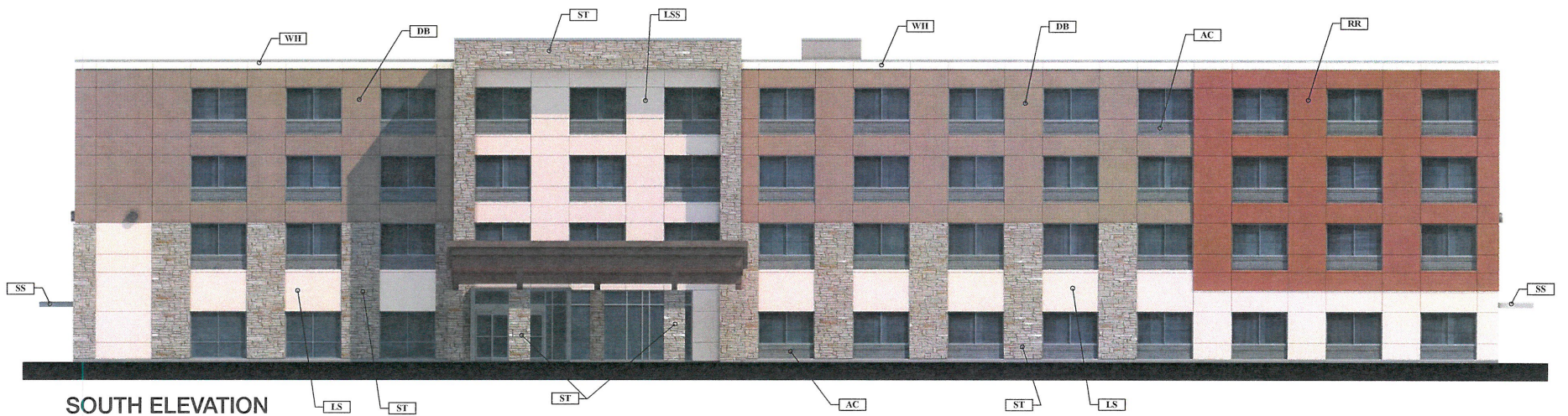
1. MAXIMUM REFLECTIVITY OF ALL EXTERIOR GLASS IS LESS THAN OR EQUAL TO 27 PERCENT.
2. PARAPET WALL ENCIRCLES PERIMETER OF THE BUILDING.
3. ALL ROOF MOUNTED EQUIPMENT WILL BE SCREENED BY CONTINUOUS PARAPET WALL.

03-02-15



**HOLIDAY INN EXPRESS** - McKinney, TX  
NORTH & WEST ELEVATIONS





### SOUTH ELEVATION

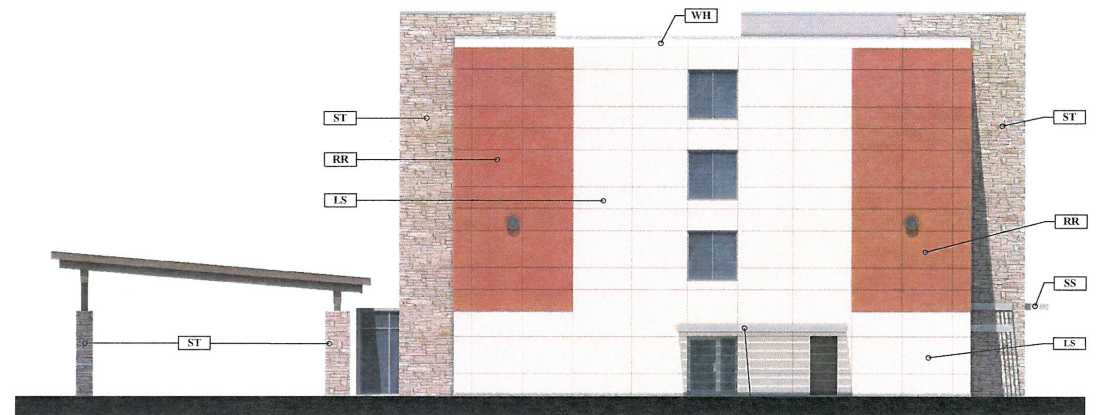
32.23% STONE TO STUCCO RATIO  
27.22% WD/W/DOOR TO SURFACE RATIO

#### EXTERIOR FINISH LEGEND

- LS - STUCCO - LS; LIMESTONE/SANDSTONE, MULTI-TEXTURE SURFACE
- LSS - STUCCO - LS; SAND SMOOTH SURFACE
- DB - STUCCO - DB; DARK BRONZE, SAND FINE SURFACE
- RR - STUCCO - RR; RUSTIC RED, SAND SMOOTH SURFACE
- WH - STUCCO - WH; WHITE, SAND SMOOTH SURFACE
- ST - CULTURED STONE, LEDGESTONE SOUTHWEST BLEND
- SS - SUNSHADE: 6" DEEP, "TUBE BLADE" CLEAR ANODIZED ALUM.
- AC - TYPICAL 'PTAK' HVAC WINDOW UNIT.

#### NOTES:

1. MAXIMUM REFLECTIVITY OF ALL EXTERIOR GLASS IS LESS THAN OR EQUAL TO 27 PERCENT.
2. PARAPET WALL ENCIRCLES PERIMETER OF THE BUILDING.
3. ALL ROOF MOUNTED EQUIPMENT WILL BE SCREENED BY CONTINUOUS PARAPET WALL.



### EAST ELEVATION

27.18% STONE TO STUCCO RATIO  
6.38% WD/W/DOOR TO SURFACE RATIO

SS - L: 20'-0"

03-02-15



**HOLIDAY INN EXPRESS** - McKinney, TX  
SOUTH & EAST ELEVATIONS

**LUNA**  
ARCHITECTURE  
+ DESIGN



ZANTI HOTELS