

Franconia Brewing Tap Room

06.18.18

18-0063
495 McKinney Parkway, McKinney, Texas 75071

FACADE PLAN REVIEW

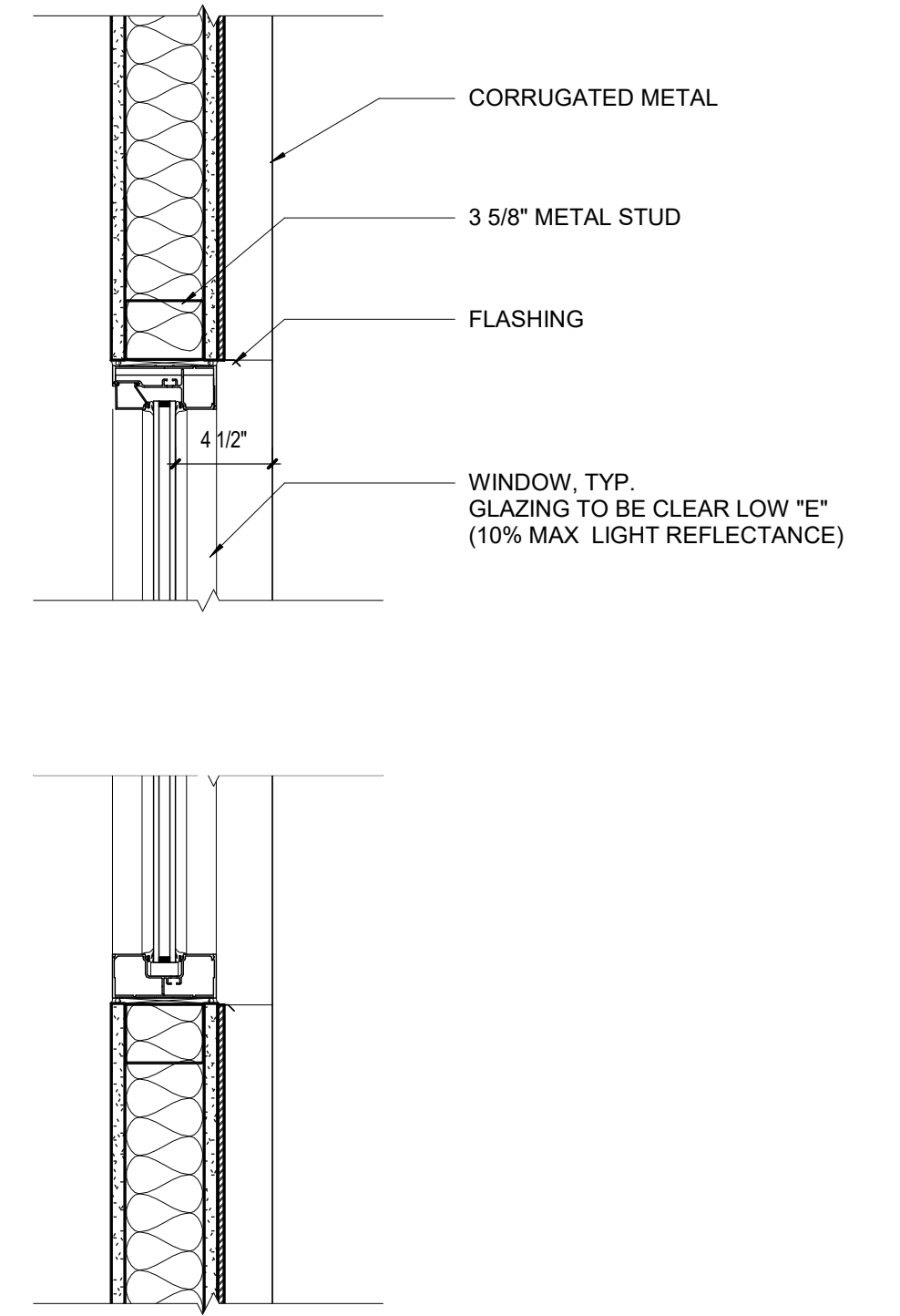
As indicated



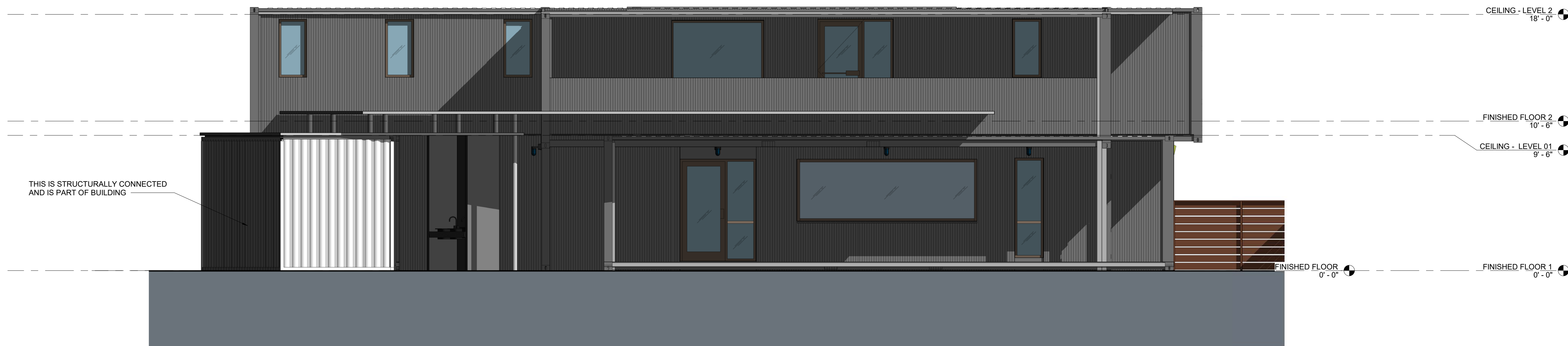
1 EAST ELEVATION - Facade Review
1/4" = 1'-0"

EXTERIOR FINISH MATERIALS USED: ALL FACADES
 EAST - 100% CORRUGATED METAL PANEL - PAINTED SW7068 GRIZZLE GRAY OR SIMILAR
 NORTH - 100% CORRUGATED METAL PANEL - PAINTED SW7068 GRIZZLE GRAY OR SIMILAR
 SOUTH - 100% CORRUGATED METAL PANEL - PAINTED SW7068 GRIZZLE GRAY OR SIMILAR
 WEST - 100% CORRUGATED METAL PANEL - PAINTED SW7068 GRIZZLE GRAY OR SIMILAR

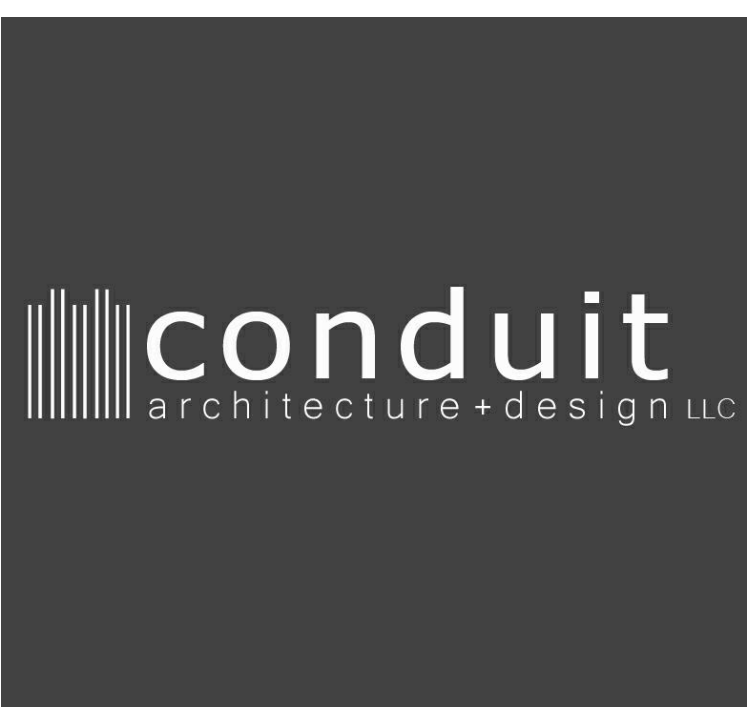
NOTES:
 1. ALL MECHANICAL EQUIPMENT WILL BE SCREENED FROM RIGHT OF WAY



3 TYP. WINDOW SECTION - FACADE REVIEW
1 1/2" = 1'-0"



2 NORTH ELEVATION - Facade Review
1/4" = 1'-0"



NOT FOR REGULATORY
APPROVAL, PERMITTING, OR
CONSTRUCTION
KOBAY SEALE TX# 21100

Franconia Brewing Tap Room

06.18.18

18-0063
495 McKinney Parkway, McKinney, Texas 75071

FACADE PLAN REVIEW

1/4" = 1'-0"



1 SOUTH ELEVATION - Facade Review
1/4" = 1'-0"



2 WEST ELEVATION - Facade Review
1/4" = 1'-0"

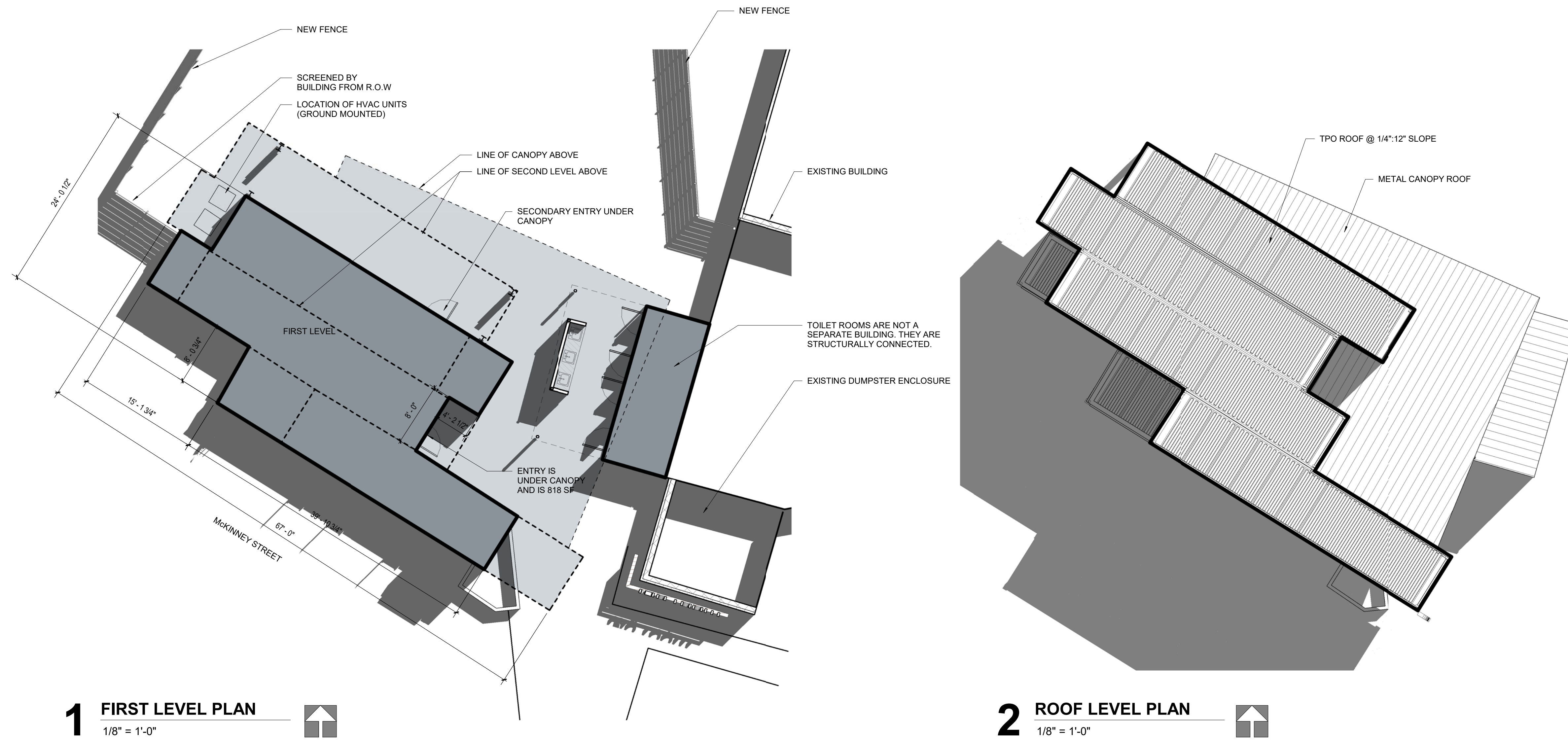
Franconia Brewing Tap Room

06.18.18

18-0063
495 McKinney Parkway, McKinney, Texas 75071

FACADE PLAN REVIEW

1/8" = 1'-0"



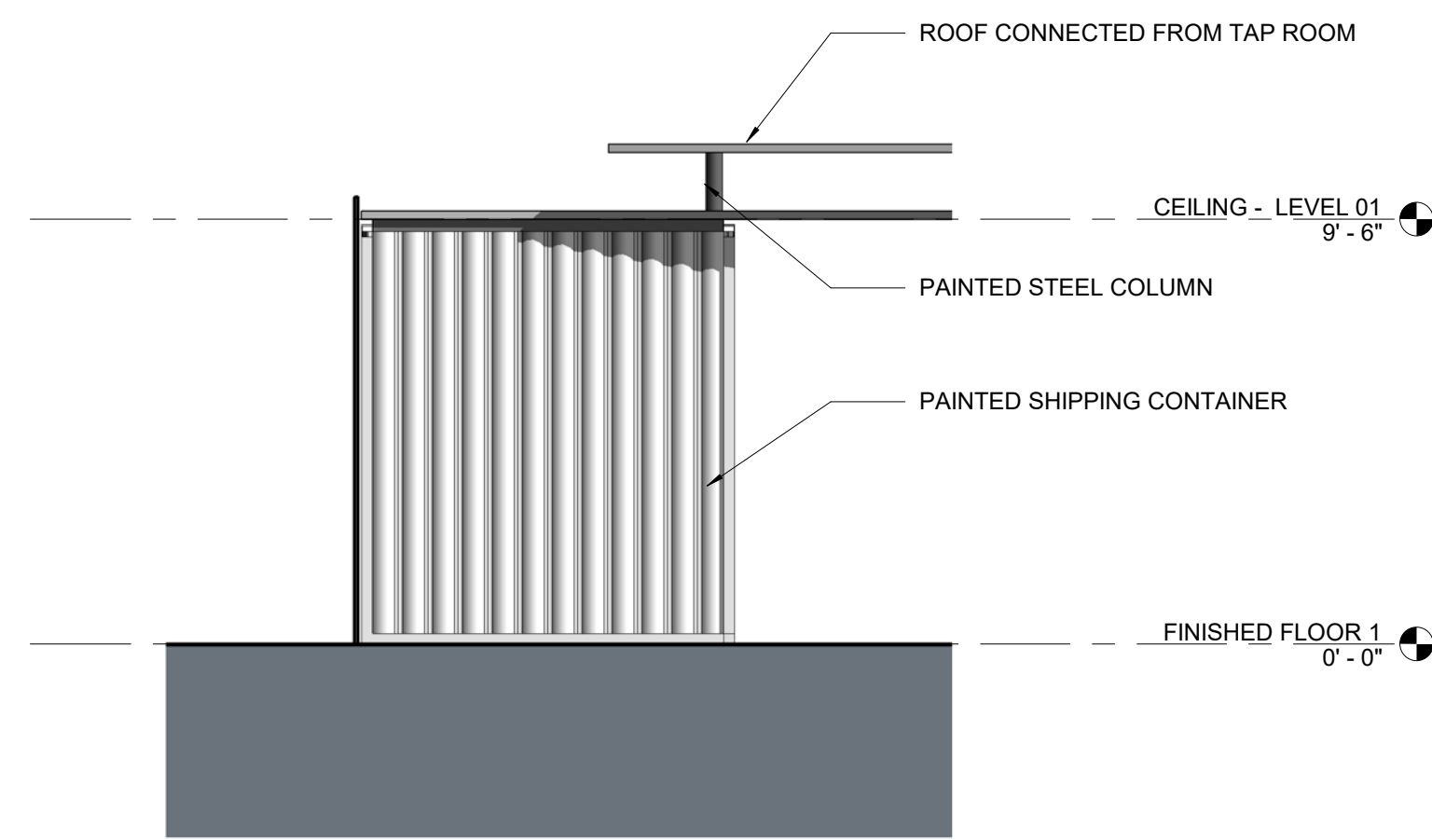
Franconia Brewing Tap Room

06.18.18

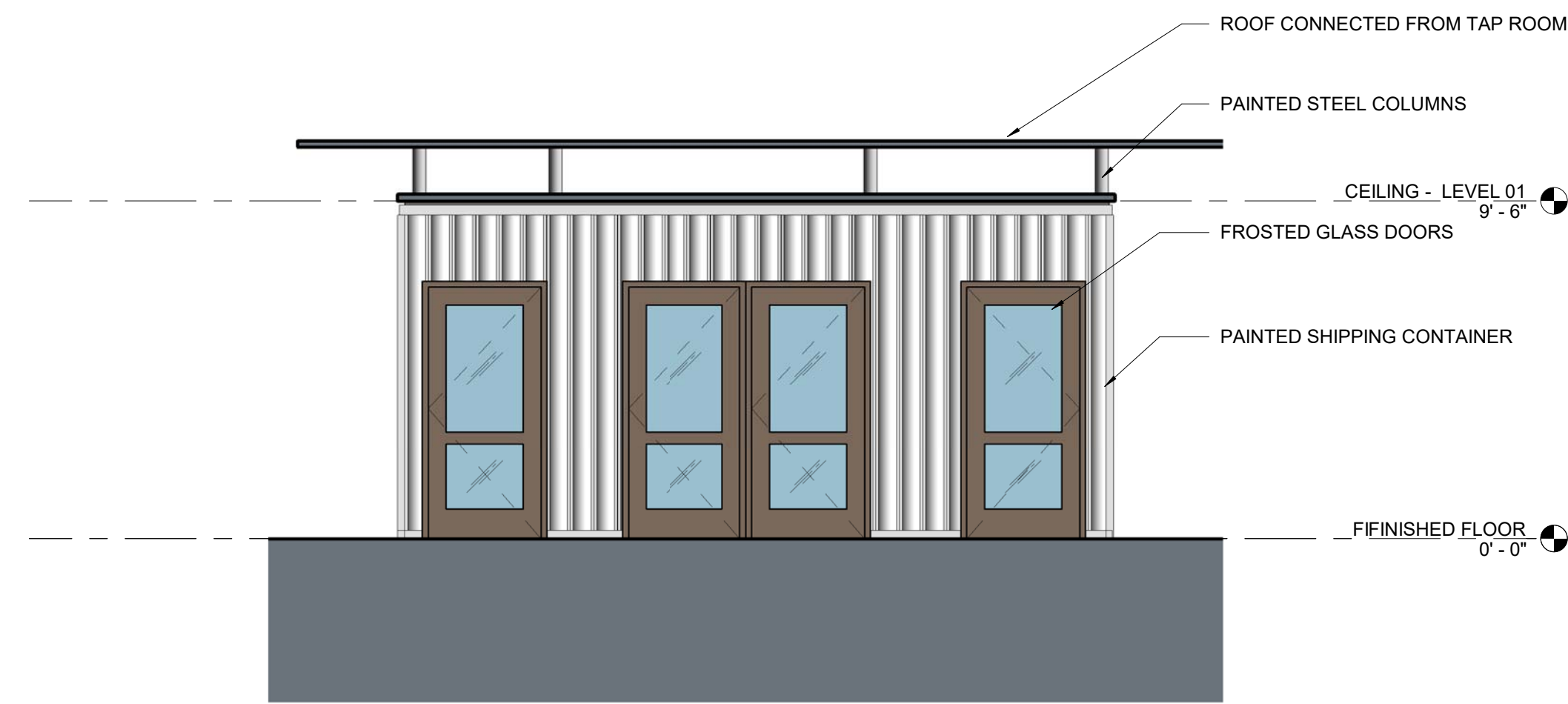
18-0063
495 McKinney Parkway, McKinney, Texas 75071

FACADE PLAN REVIEW

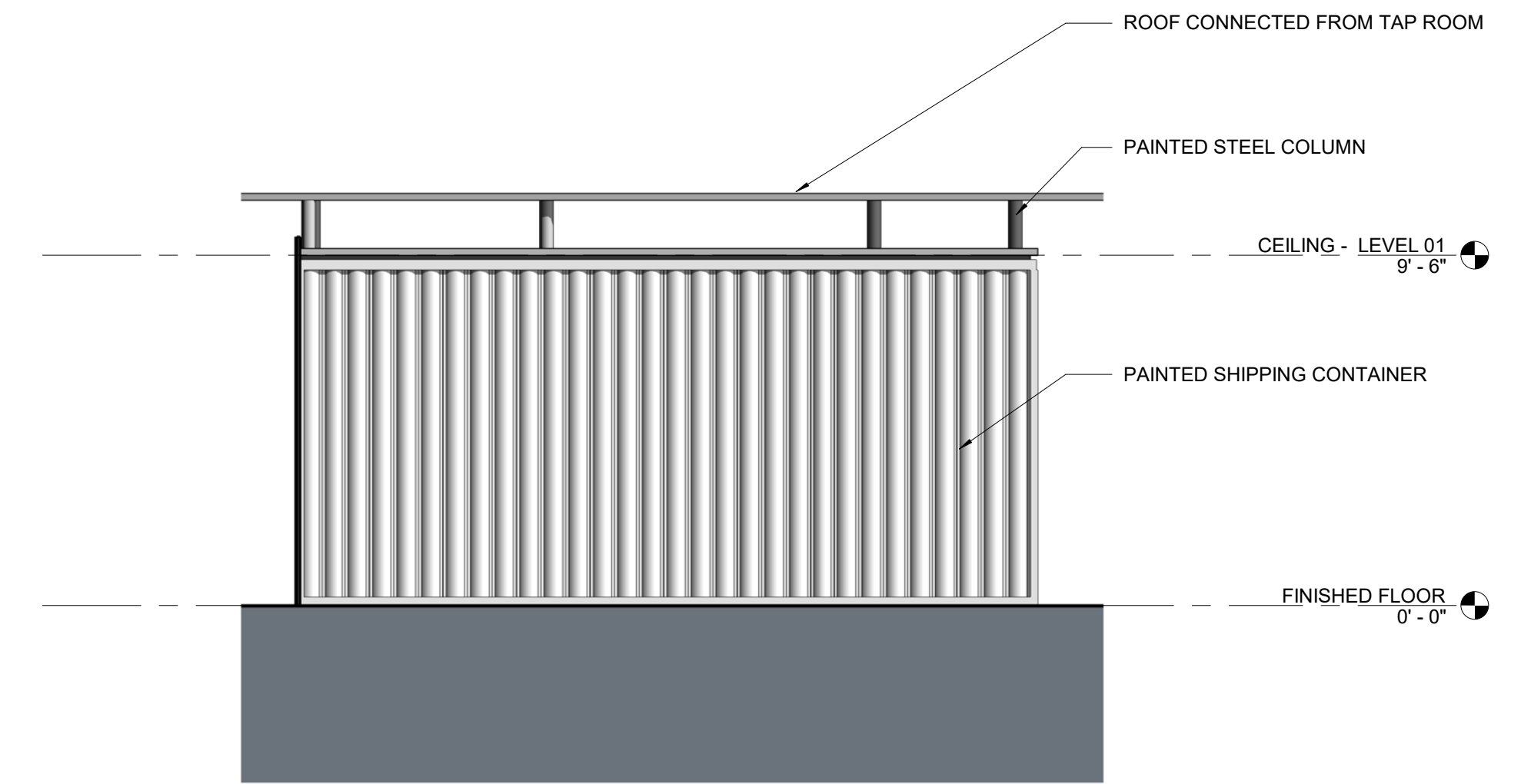
1/4" = 1'-0"



1 NORTH/SOUTH ELEVATION - RESTROOMS
1/4" = 1'-0"



2 WEST ELEVATION - RESTROOMS
1/4" = 1'-0"



3 EAST ELEVATION - RESTROOMS
1/4" = 1'-0"

Franconia Brewing Tap Room

06.18.18

18-0063

495 McKinney Parkway, McKinney, Texas 75071

IMAGES



NOTE:

1. SIGNAGE TO BE SUBMITTED FOR SIGNAGE PERMIT

