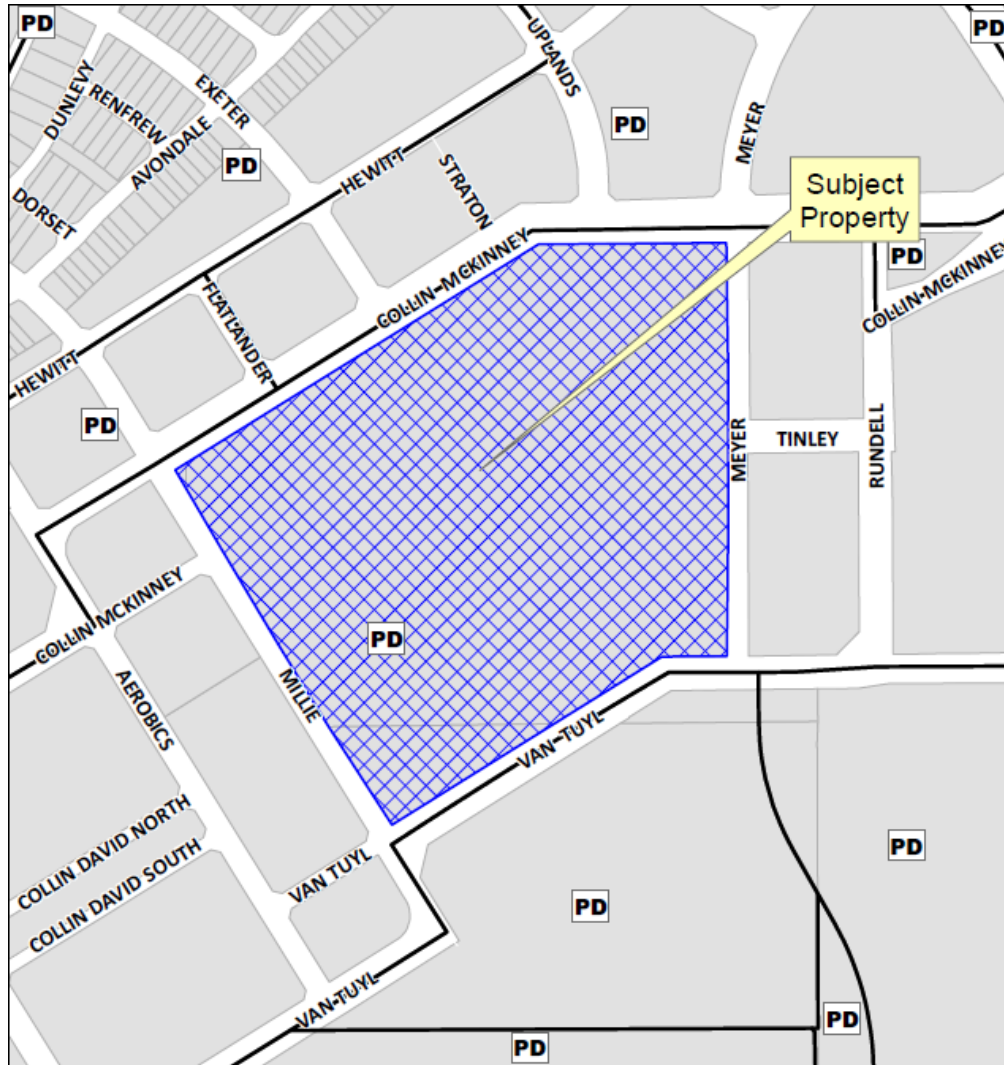


Spicewood at Craig Ranch  
Preliminary-Final Plat  
14-321PF



# Location Map

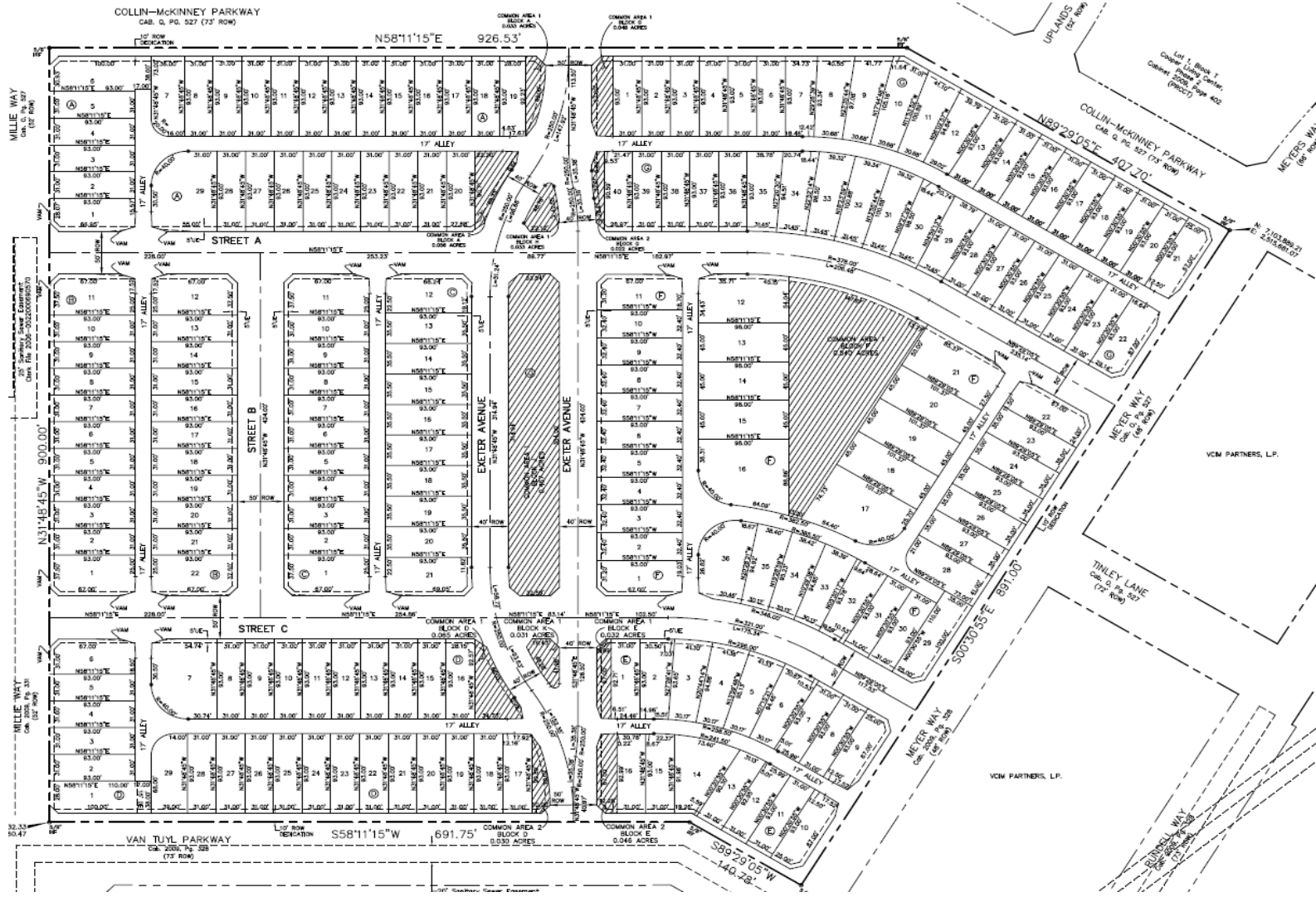


# Aerial Exhibit





# Proposed Preliminary-Final Plat





STREET A

SHRUBS & GROUNDCOVER

ORNAMENTAL TREES

SEATING AREA

CANDPY TREE

5' CONCRETE WALK

13' ALEX

PROP. 8" 8" SWR

PROP. 8" 8" SWR

INLET

18" PROP

PROP.