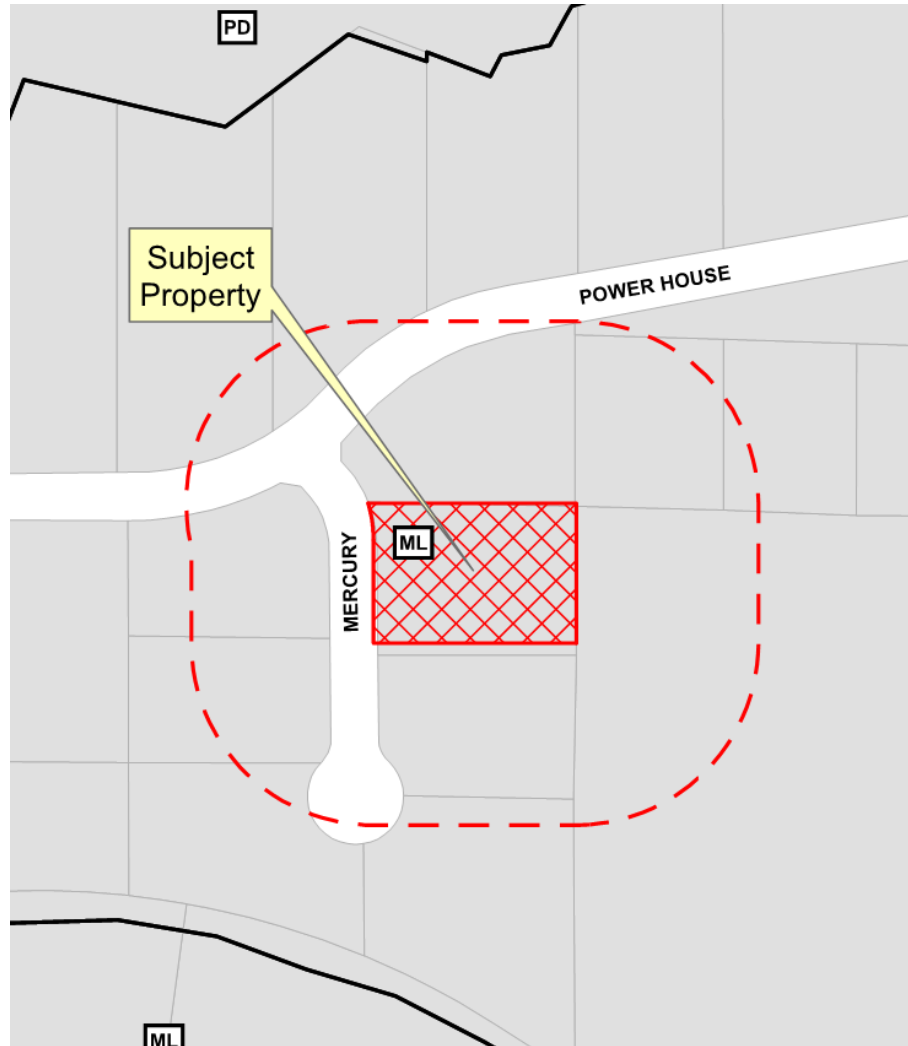


Collin County Customs Façade Plan Appeal

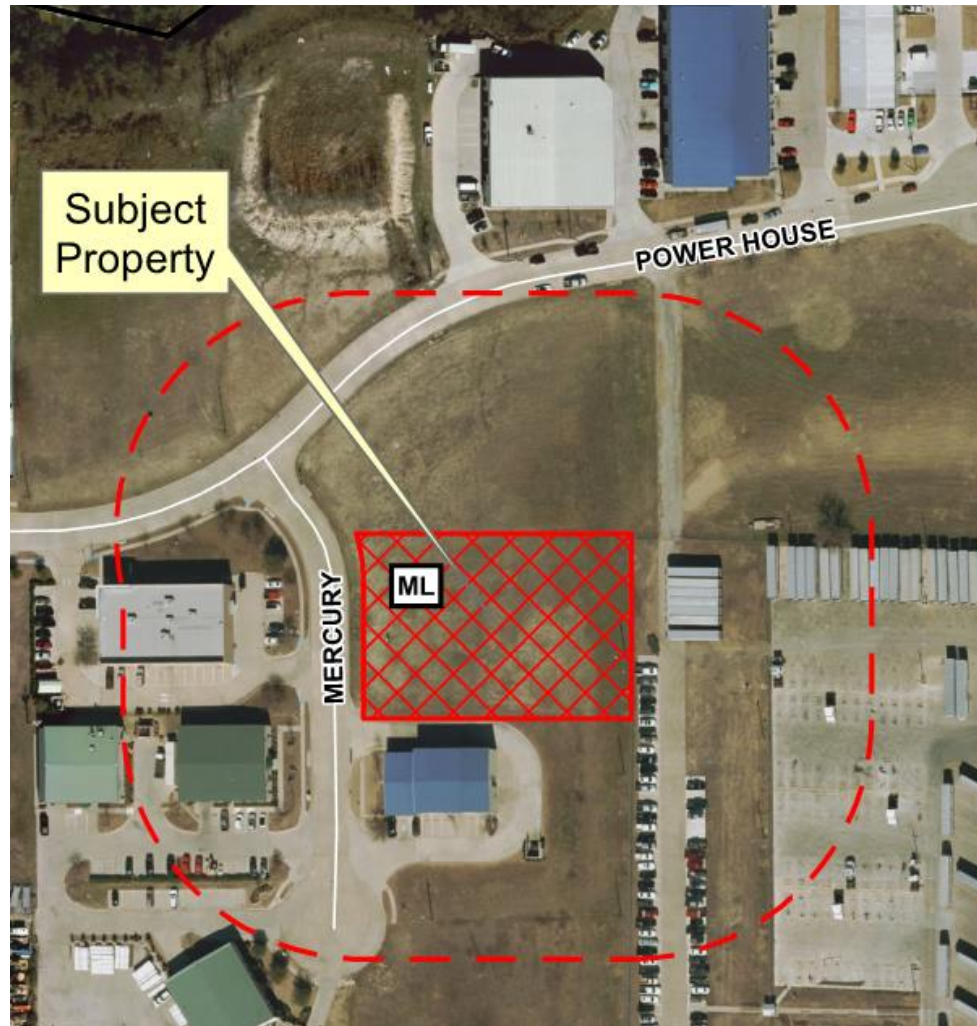
18-0046FR



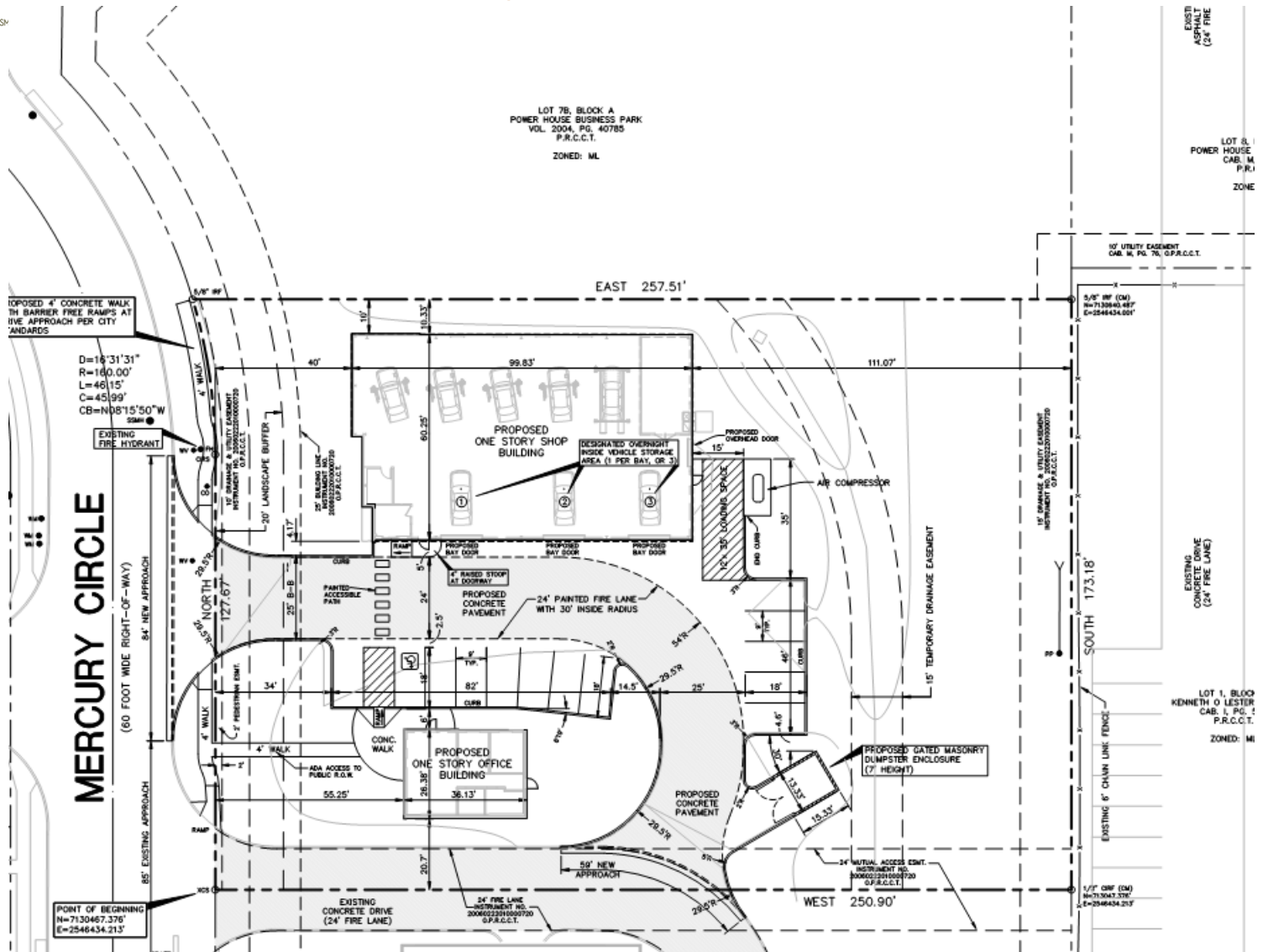
Location Map



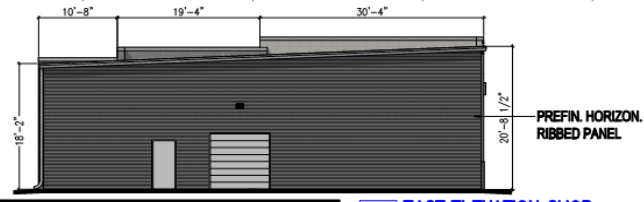
Aerial Exhibit



Proposed Site Plan

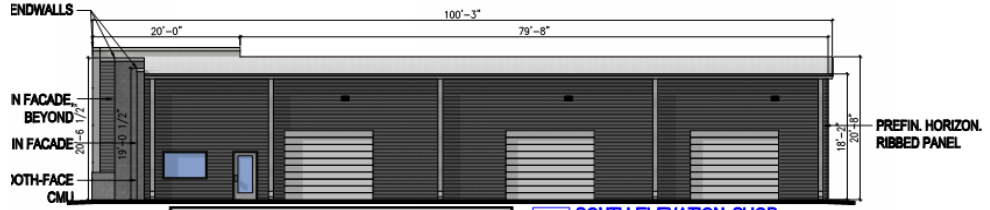


Proposed Elevations



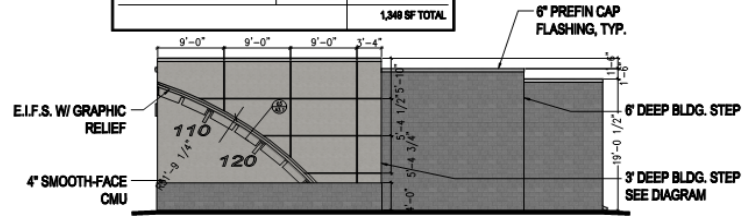
EAST FACADE MATERIAL PERCENTAGES - SHOP		
PREFIN. HORIZ. RIBBED PANEL	1,113 SF	100% OF FACADE
		1,113 SF TOTAL

06 EAST ELEVATION-SHOP
FP.3 1/8"=1'-0"



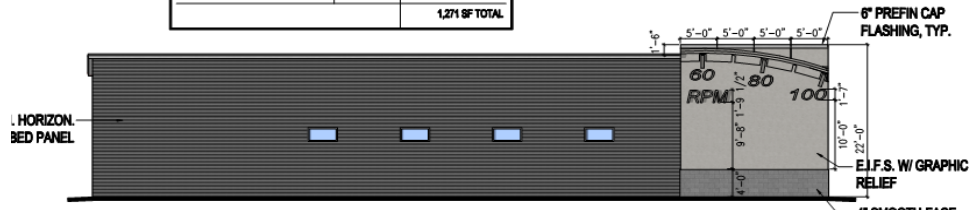
SOUTH FACADE MATERIAL PERCENTAGES - SHOP		
PREFIN. HORIZ. RIBBED PANEL	1,288 SF	97% OF FACADE
E.I.F.S. W GRAPHIC RELIEF	18 SF	1% OF FACADE
4" SMOOTH-FACE CMU	33 SF	2% OF FACADE
		1,349 SF TOTAL

07 SOUTH ELEVATION-SHOP
FP.3 1/8"=1'-0"



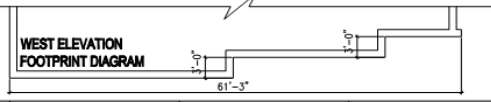
WEST FACADE MATERIAL PERCENTAGES - SHOP		
E.I.F.S. W GRAPHIC RELIEF	647 SF	43% OF FACADE
4" SMOOTH-FACE CMU	724 SF	57% OF FACADE
		1,271 SF TOTAL

08 WEST ELEVATION-SHOP
FP.3 1/8"=1'-0" STREET FACING FACADE



NORTH FACADE MATERIAL PERCENTAGES - SHOP		
PREFIN. HORIZ. RIBBED PANEL	1,884 SF	78% OF FACADE
E.I.F.S. W GRAPHIC RELIEF	380 SF	16% OF FACADE
4" SMOOTH-FACE CMU	80 SF	4% OF FACADE
		2,004 SF TOTAL

09 NORTH ELEVATION-SHOP
FP.3 1/8"=1'-0"

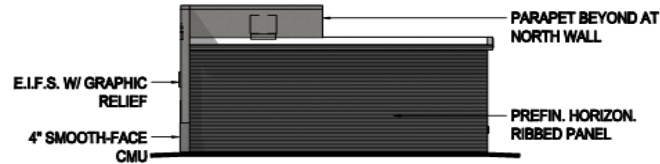


Proposed Elevations



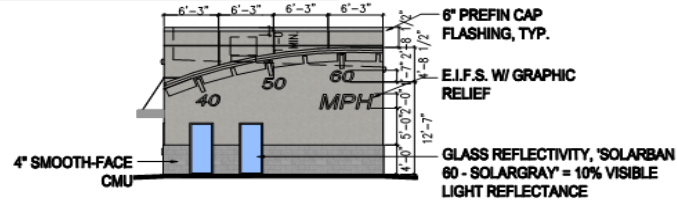
EAST FACADE MATERIAL PERCENTAGES - OFFICE		
PREFIN. HORIZ. RIBBED PANEL	329 SF	100% OF FACADE
		329 SF TOTAL

04 EAST ELEVATION-OFFICE
FP.3 1/8"=1'-0"



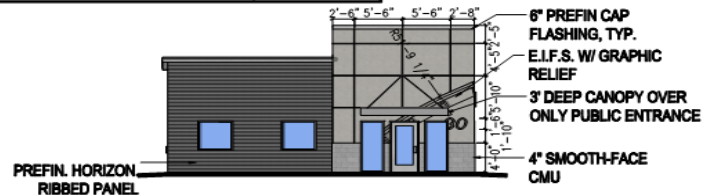
SOUTH FACADE MATERIAL PERCENTAGES - OFFICE		
PREFIN. HORIZ. RIBBED PANEL	474 SF	96% OF FACADE
E.I.F.S. W/ GRAPHIC RELIEF	16 SF	3% OF FACADE
4" SMOOTH-FACE CMU	4 SF	1% OF FACADE
		494 SF TOTAL

03 SOUTH ELEVATION-OFFICE
FP.3 1/8"=1'-0"



WEST FACADE MATERIAL PERCENTAGES - OFFICE		
PREFIN. HORIZ. RIBBED PANEL	0 SF	0% OF FACADE
E.I.F.S. W/ GRAPHIC RELIEF	384 SF	83% OF FACADE
4" SMOOTH-FACE CMU	60 SF	17% OF FACADE
		480 SF TOTAL

02 WEST ELEVATION-OFFICE
FP.3 1/8"=1'-0" STREET FACING FACADE



NORTH FACADE MATERIAL PERCENTAGES - OFFICE		
PREFIN. HORIZ. RIBBED PANEL	250 SF	49% OF FACADE
E.I.F.S. W/ GRAPHIC RELIEF	299 SF	48% OF FACADE
4" SMOOTH-FACE CMU	30 SF	5% OF FACADE
		579 SF TOTAL

01 NORTH ELEVATION-OFFICE
FP.3 1/8"=1'-0"

FACADE MATERIAL TOTALS		
PREFIN. HORIZ. RIBBED PANEL	61%	61%
E.I.F.S. W/ GRAPHIC RELIEF	33%	39%
4" SMOOTH-FACE CMU	6%	

