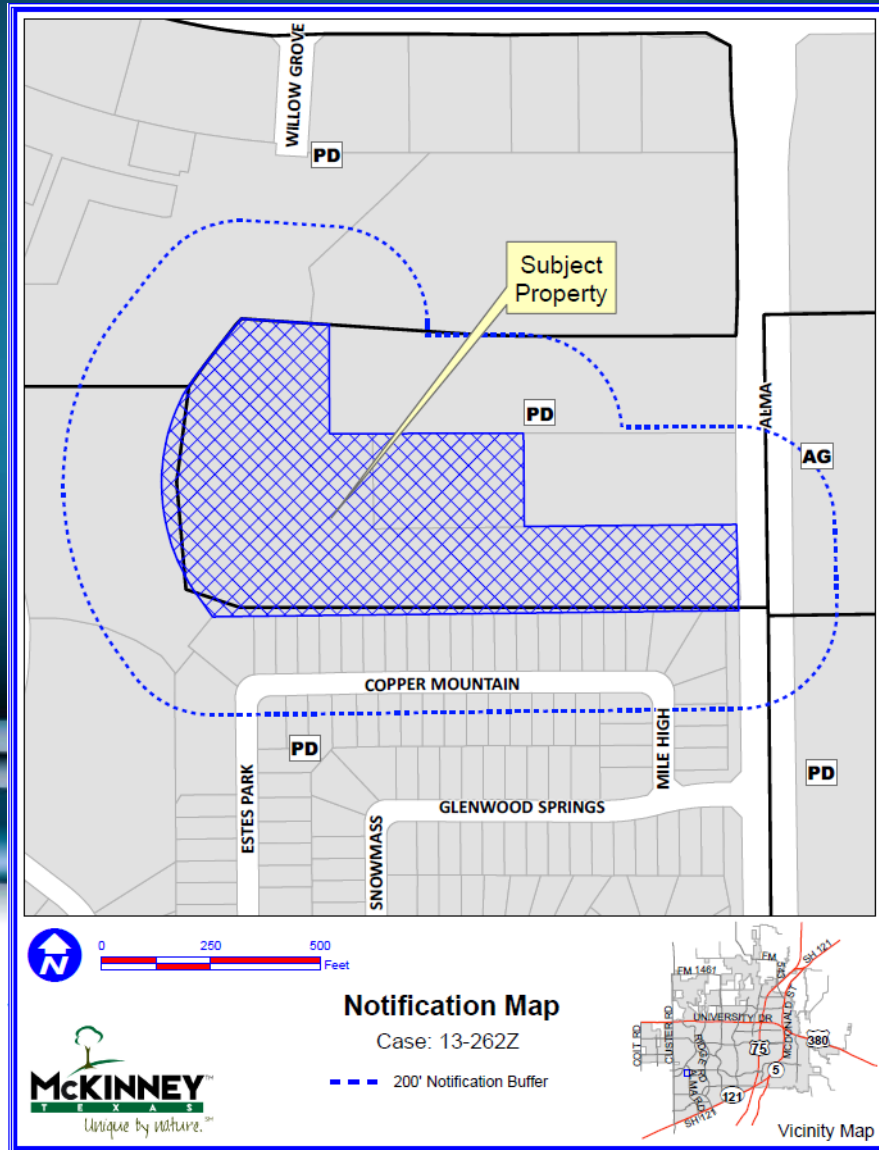


Case No. 13-262Z2

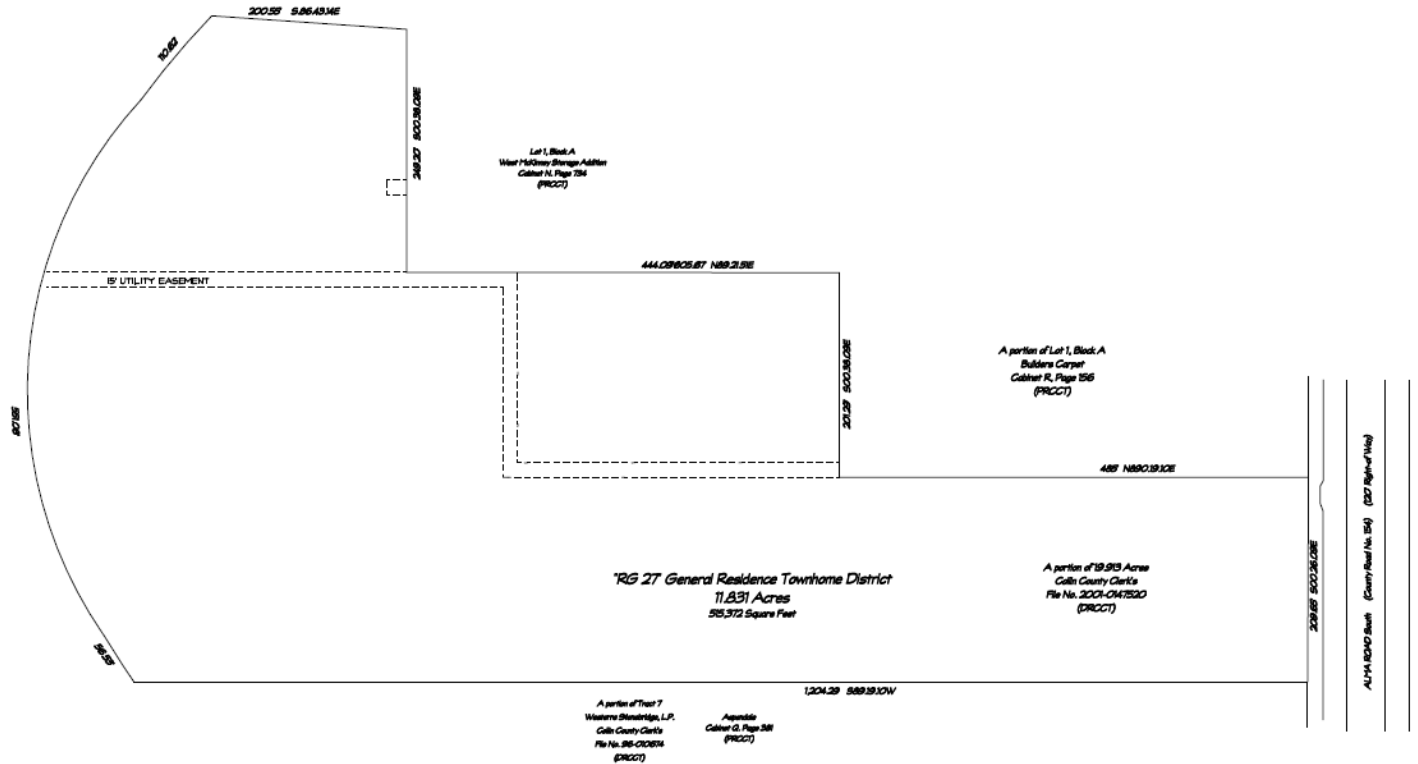
Colin Ashcroft – Alma Road



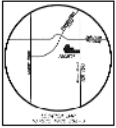
Location Map



Proposed Zoning Exhibit



RECEIVED
By Kathy Wright at 12:11 pm, Dec 09, 2013



revisions:

creative architects
SCOTT D. TODGETT, ARCHITECT

1024 cresskwood drive
gallatin, missouri 64044
784-834-812
www.creativearchitect.com
scott@ca-ncr.com

2013608
december 8, 2013
© copyright 2013
creative architects

Zoning Exhibit