

**LEGEND**

- 1-STORY RESIDENTIAL
- 2-STORY RESIDENTIAL

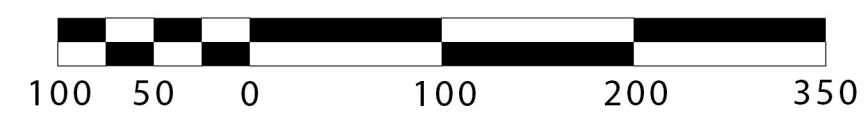
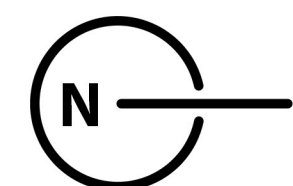
**CONCEPTUAL PROJECT INFORMATION\***

TOTAL AREA - 28.38 ACRES  
 COMMERCIAL AREA - 4.68 ACRES  
 RESIDENTIAL AREA - 23.70 ACRES

RESIDENTIAL - 212 UNITS AT ± 9 DU/AC GROSS

- 1 BD CLUSTER HOME - 1-STORY DUPLEX - 50 UNITS
- 2 BD CLUSTER HOME - 1-STORY ATTACHED GARAGE - 22 UNITS
- 2 BD CLUSTER HOME - 2-STORY ATTACHED GARAGE - 36 UNITS
- 3 BD CLUSTER HOME - 2-STORY ATTACHED GARAGE - 44 UNITS
- TOWNHOMES - 2-STORY ATTACHED GARAGE - 60 UNITS

\*PROJECT DETAILS ARE REPRESENTATIVE AND MAY CHANGE BASED ON FURTHER ANALYSIS DURING THE DESIGN PROCESS



SCALE 1" = 100'-0"

FOR ILLUSTRATIVE PURPOSES ONLY

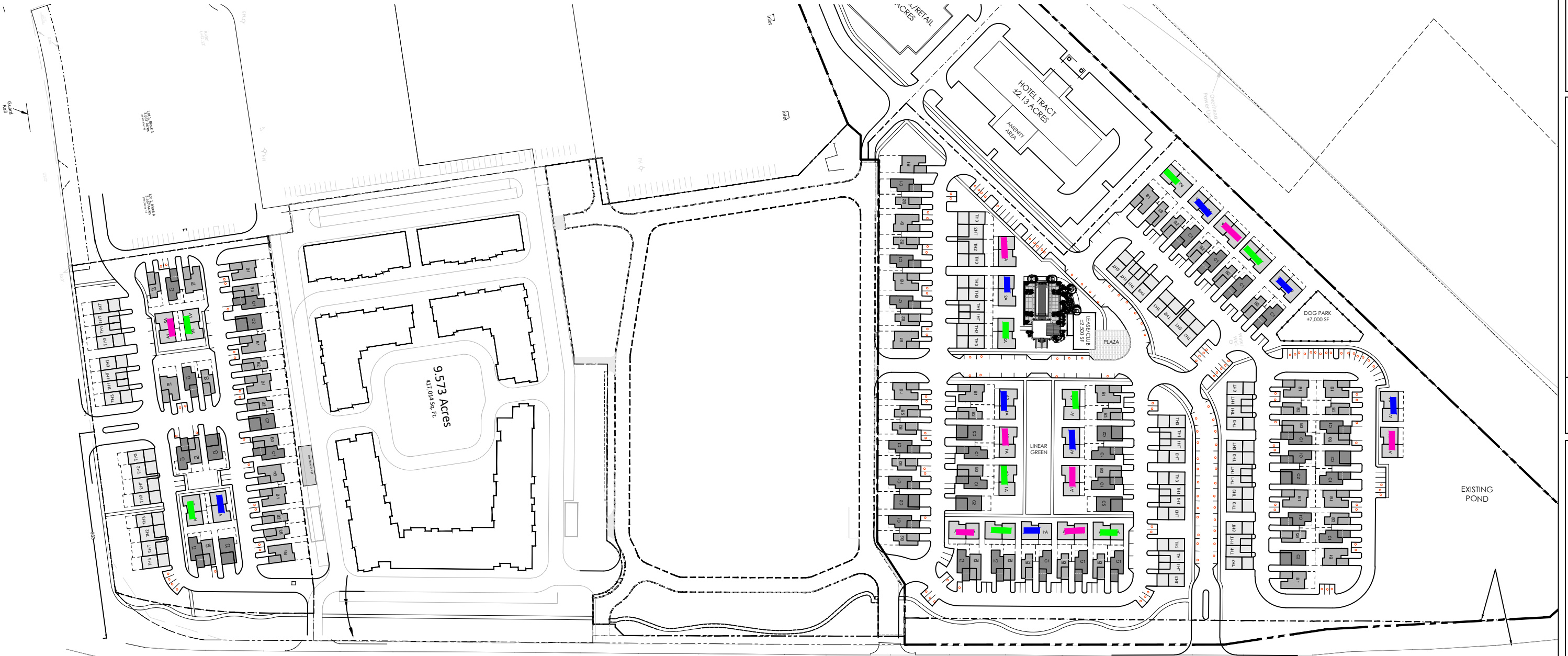
**Informational Only**

**NEWGROWTH - MCKINNEY MEDICAL VILLAGE - MIXED USE**  
 MCKINNEY, TEXAS  
 Illustrative Site Plan



www.leeandassociates.net

ALLOCATED AT 1.5 SPACES PER A UNIT  
 ALL OTHER UNITS SELF PARK WITH GARAGE AND TANDEM  
 RED SPACES ARE EXTRA/GUEST PARKING



Tejas Land Holdings, LLC  
 202000305000323150

Informational Only



**LEE  
 AND ASSOCIATES**

8601 RANCH ROAD 2222  
 BUILDING L, SUITE 290  
 AUSTIN, TX 78730  
 (512) 345-8477  
 www.leeandassociates.net

DATE	12/22/2020
PROJ. NO.	2603
FILE NAME	2603 BASE 6
XREF	
XREF	

**NEW GROWTH LIVING**  
 MCKINNEY, TEXAS  
**PARKING ALLOCATION**

THIS DRAWING IS  
 NOT FOR  
 REGULATORY  
 APPROVAL, OR  
 CONSTRUCTION



LEE AND ASSOCIATES

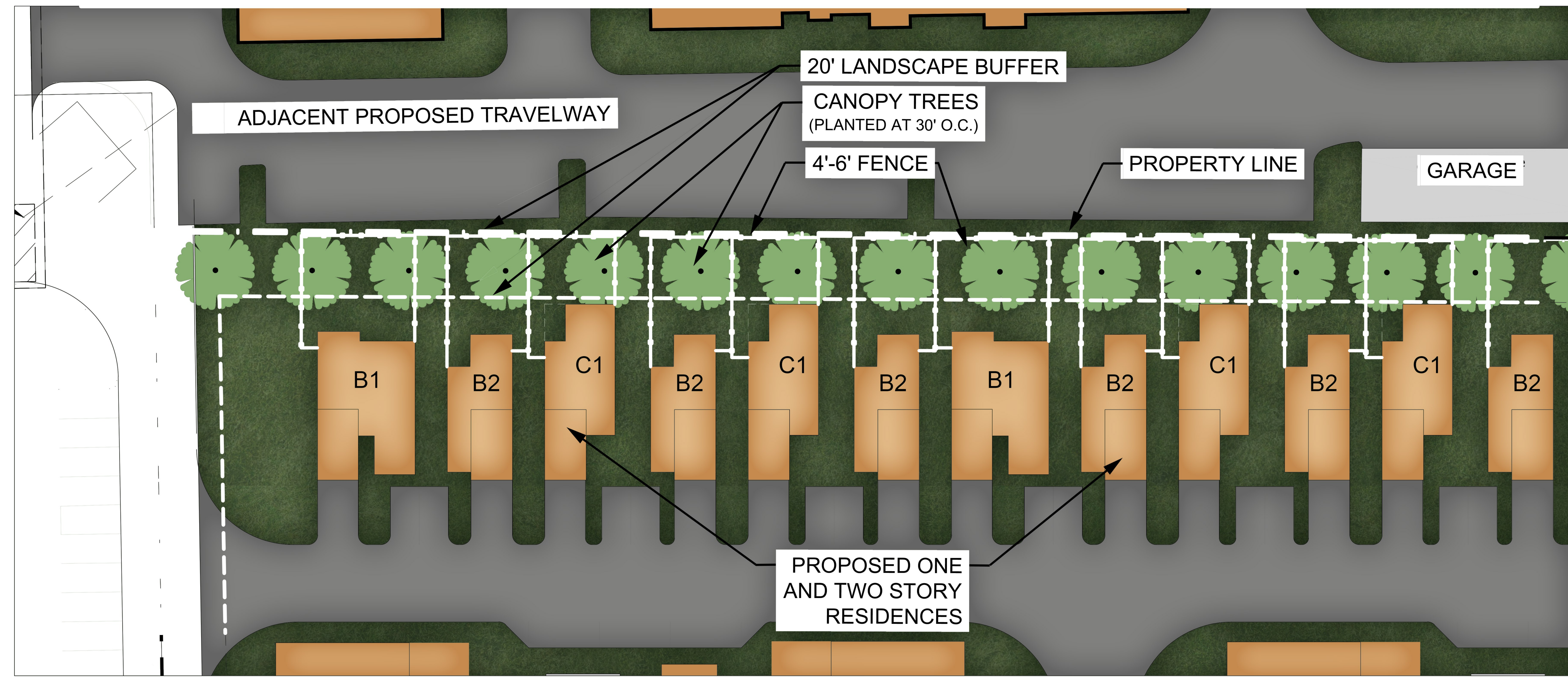
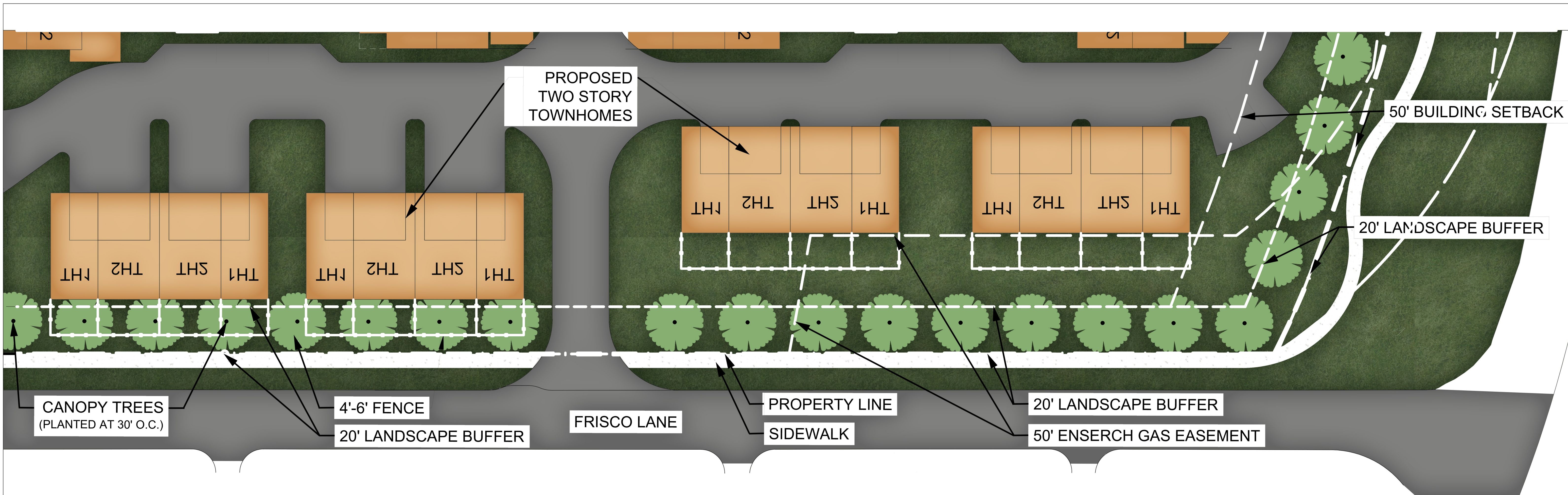
8601 RANCH ROAD 2222  
BUILDING I, SUITE 290  
AUSTIN, TX 78730  
(512) 345-8477  
www.leeandassociates.net

DATE	11/6/2020
PROJ. NO.	2603
FILE NAME	2603 BASE 3 EXHIBIT
XREF	
XREF	

**NEW GROWTH LIVING**  
MCKINNEY, TEXAS  
TYPICAL LANDSCAPE BUFFER EXHIBIT

THIS DRAWING IS NOT FOR REGULATORY APPROVAL, OR CONSTRUCTION

CSP-1



Informational Only

