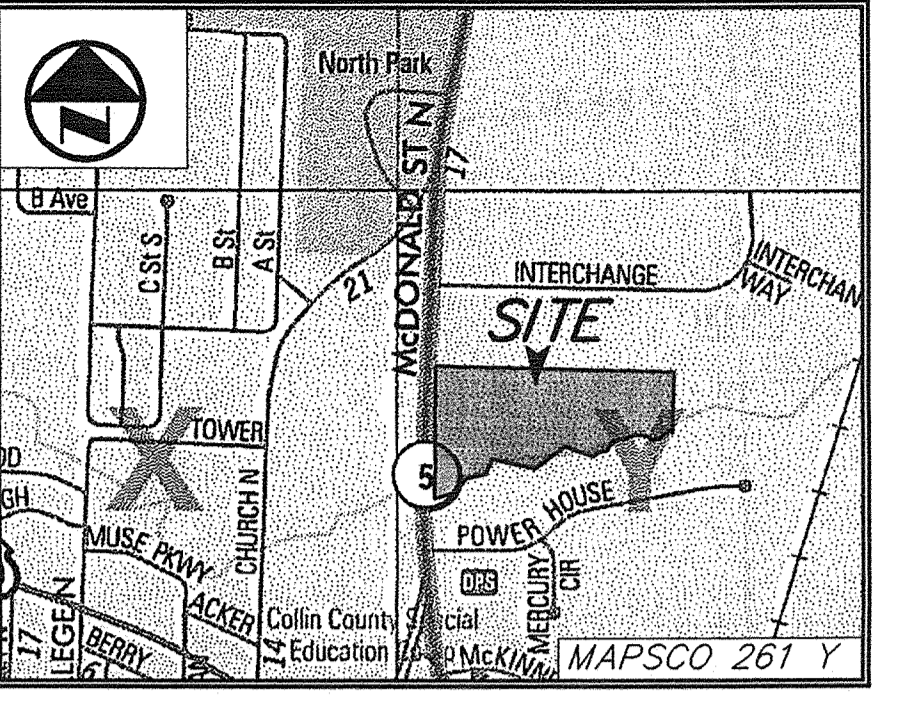
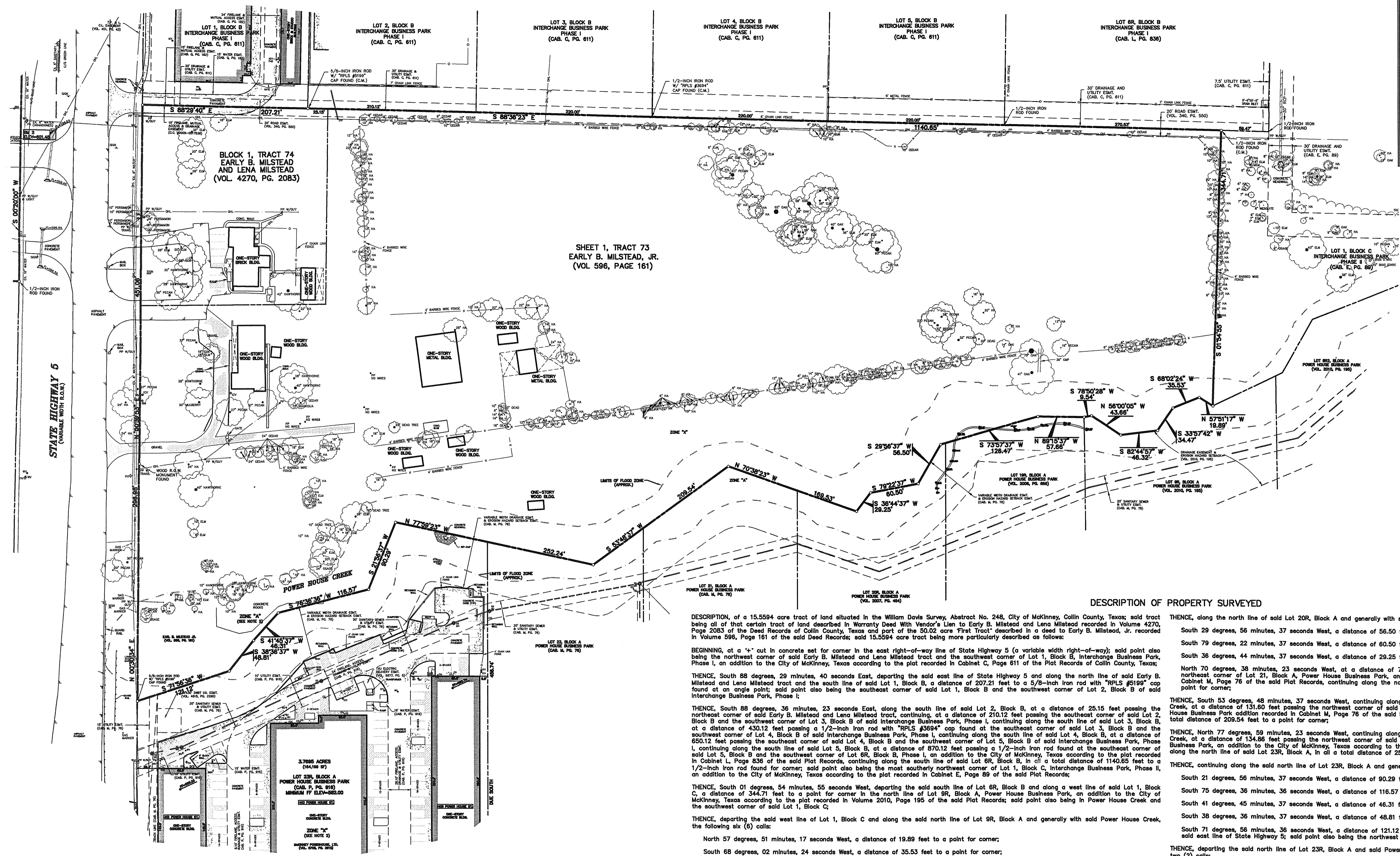


ROLLINS 12/10/2012 - 8:10AM
 N:\08\1500-1599\1529-12-065-TOPO SURVEY.DWG
 © POSE ENGINEERING & DEVELOPMENT COMPANY, INC. 2012. ALL RIGHTS RESERVED. THE ENGINEERING DESIGN, DETAIL AND ENGINEERING DRAWINGS FOR THIS PROJECT AND/OR OVERALL PROJECT ARE THE LEGAL PROPERTY OF POSE ENGINEERING & DEVELOPMENT COMPANY, INC. THEIR USE FOR REPRODUCTION, CONSTRUCTION, OR DISTRIBUTION IS PROHIBITED UNLESS AUTHORIZED IN WRITING BY POSE ENGINEERING & DEVELOPMENT COMPANY, INC.



VICINITY MAP
 NOT TO SCALE

SHEET 1, TRACT 73
 EARLY B. MILSTEAD, JR.
 (VOL. 596, PAGE 161)

DESCRIPTION OF PROPERTY SURVEYED

DESCRIPTION, of a 15.5594 acre tract of land situated in the William Davis Survey, Abstract No. 248, City of McKinney, Collin County, Texas; said tract being all of that certain tract of land described in Warranty Deed With Vendor's Lien to Early B. Milstead and Lena Milstead recorded in Volume 4270, Page 2083 of the Deed Records of Collin County, Texas and part of the 50.02 acre "First Tract" described in a deed to Early B. Milstead, Jr. recorded in Volume 596, Page 161 of the said Deed Records; said 15.5594 acre tract being more particularly described as follows:

BEGINNING, at a "4" cut in concrete set for corner in the east right-of-way line of State Highway 5 (a variable width right-of-way); said point also being the northwest corner of said Early B. Milstead and Lena Milstead tract and the southwest corner of Lot 1, Block B, Interchange Business Park, Phase I, an addition to the City of McKinney, Texas according to the plat recorded in Cabinet C, Page 611 of the Plat Records of Collin County, Texas;

THENCE, South 88 degrees, 29 minutes, 40 seconds East, departing the said east line of State Highway 5 and along the north line of said Early B. Milstead and Lena Milstead tract and the south line of said Lot 1, Block B, a distance of 207.21 feet to a 5/8-inch iron rod with "RPLS #5199" cap found at an angle point; said point also being the southeast corner of said Lot 1, Block B and the southwest corner of Lot 2, Block B of said Interchange Business Park, Phase I;

THENCE, South 88 degrees, 36 minutes, 23 seconds East, along the south line of said Lot 2, Block B, at a distance of 25.15 feet passing the northeast corner of said Early B. Milstead and Lena Milstead tract, continuing, at a distance of 210.12 feet passing the southeast corner of said Lot 2, Block B and the southwest corner of Lot 3, Block B of said Interchange Business Park, Phase I, continuing along the south line of said Lot 3, Block B, at a distance of 430.12 feet passing a 1/2-inch iron rod with "RPLS #3694" cap found at the southeast corner of said Lot 3, Block B and the southwest corner of Lot 4, Block B of said Interchange Business Park, Phase I, continuing along the south line of said Lot 4, Block B, at a distance of 850.12 feet passing the southeast corner of said Lot 4, Block B and the southwest corner of Lot 5, Block B of said Interchange Business Park, Phase I, continuing along the south line of said Lot 5, Block B, at a distance of 870.12 feet passing a 1/2-inch iron rod found at the southeast corner of said Lot 5, Block B and the southwest corner of Lot 6R, Block B, Phase I, an addition to the City of McKinney, Texas according to the plat recorded in Cabinet L, Page 836 of the said Plat Records, continuing along the south line of said Lot 6R, Block B, in all a total distance of 1140.65 feet to a 1/2-inch iron rod found for corner; said point also being the most southerly northwest corner of Lot 1, Block C, Interchange Business Park, Phase II, an addition to the City of McKinney, Texas according to the plat recorded in Cabinet E, Page 69 of the said Plat Records;

THENCE, South 01 degrees, 54 minutes, 55 seconds West, departing the said south line of Lot 6R, Block B and along a west line of said Lot 1, Block C, a distance of 344.71 feet to a point for corner in the north line of Lot 9R, Block A, Power House Business Park, an addition to the City of McKinney, Texas according to the plat recorded in Volume 2010, Page 195 of the said Plat Records; said point also being in Power House Creek and the southwest corner of said Lot 1, Block C;

THENCE, departing the said west line of Lot 1, Block C and along the said north line of Lot 9R, Block A and generally with said Power House Creek, the following six (6) calls:

North 57 degrees, 51 minutes, 17 seconds West, a distance of 19.89 feet to a point for corner;

South 68 degrees, 02 minutes, 24 seconds West, a distance of 35.53 feet to a point for corner;

South 33 degrees, 57 minutes, 42 seconds West, a distance of 34.47 feet to a point for corner;

South 82 degrees, 44 minutes, 57 seconds West, a distance of 46.32 feet to a point for corner;

North 56 degrees, 00 minutes, 05 seconds East, a distance of 43.66 feet to a point for corner;

South 78 degrees, 50 minutes, 28 seconds West, a distance of 9.54 feet to an angle point; said point also being the northwest corner of said Lot 9R, Block A and the northeast corner of Lot 19R, Block A, Power House Business Park, an addition to the City of McKinney, Texas according to the plat recorded in Volume 2006, Page 866 of the said Plat Records;

THENCE, along the north line of said Lot 19R, Block A and generally with said Power House Creek, the following two (2) calls:

North 89 degrees, 15 minutes, 37 seconds West, a distance of 57.66 feet to an angle point;

South 73 degrees, 57 minutes, 37 seconds West, at a distance of 120.17 feet passing the northwest corner of said Lot 19R, Block A and the northeast corner of Lot 20R, Block A, Power House Business Park, an addition to the City of McKinney, Texas according to the plat recorded in Volume 2007, Page 454 of the said Plat Records, continuing along the north line of said Lot 20R, Block A, a total distance of distance of 126.47 feet to a point for corner;

THENCE, along the north line of said Lot 20R, Block A and generally with said Power House Creek, the following four (4) calls:

South 29 degrees, 56 minutes, 37 seconds West, a distance of 56.50 feet to a point for corner;

South 79 degrees, 22 minutes, 37 seconds West, a distance of 60.50 feet to a point for corner;

South 38 degrees, 44 minutes, 37 seconds West, a distance of 29.25 feet to a point for corner;

North 70 degrees, 38 minutes, 23 seconds West, at a distance of 78.37 feet passing the northwest corner of said Lot 20R, Block A and the northeast corner of Lot 21, Block A, Power House Business Park, an addition to the City of McKinney, Texas according to the plat recorded in Cabinet M, Page 76 of the said Plat Records, continuing along the north line of said Lot 21, Block A, in all a total distance of 169.53 feet to a point for corner;

THENCE, South 53 degrees, 48 minutes, 37 seconds West, continuing along the north line of said Lot 21, Block A and generally with said Power House Creek, at a distance of 131.60 feet passing the northwest corner of said Lot 21, Block A and the northeast corner of Lot 22, Block A of said Power House Business Park addition recorded in Cabinet M, Page 76 of the said Plat Records, continuing along the north line of said Lot 22, Block A, in all a total distance of 209.54 feet to a point for corner;

THENCE, North 77 degrees, 59 minutes, 23 seconds West, continuing along the north line of said Lot 22, Block A and generally with said Power House Creek, at a distance of 134.89 feet passing the northwest corner of said Lot 22, Block A and the northeast corner of Lot 23R, Block A, Power House Business Park, an addition to the City of McKinney, Texas according to the plat recorded in Cabinet P, Page 916 of the said Plat Records, continuing along the north line of said Lot 23R, Block A, in all a total distance of 252.24 feet to a point for corner;

THENCE, continuing along the said north line of Lot 23R, Block A and generally with said Power House Creek, the following five (5) calls:

South 21 degrees, 56 minutes, 37 seconds West, a distance of 90.29 feet to a point for corner;

South 75 degrees, 36 minutes, 36 seconds West, a distance of 116.57 feet to a point for corner;

South 41 degrees, 45 minutes, 37 seconds West, a distance of 46.31 feet to an angle point;

South 38 degrees, 36 minutes, 37 seconds West, a distance of 48.81 feet to a point for corner;

South 71 degrees, 56 minutes, 36 seconds West, a distance of 121.12 feet to a 5/8-inch iron rod with "RPLS #5199" cap found for corner in the said east line of State Highway 5; said point also being the northwest corner of said Lot 23R, Block A;

THENCE, departing the said north line of Lot 23R, Block A and said Power House Creek and along the said east line of State Highway 5, the following two (2) calls:

North 00 degrees, 30 minutes, 34 seconds East, a distance of 298.98 feet to a wood right-of-way monument found at an angle point;

North 00 degrees, 39 minutes, 53 seconds East, at a distance of 199.09 feet passing the southwest corner of said Early B. Milstead and Lena Milstead tract, continuing in all a total distance of 451.06 feet to the POINT OF BEGINNING;

CONTAINING, 677,766 square feet or 15.5594 acres of land, more or less.

ZONING EXHIBIT
**14.2364 ACRE TRACT OF LAND AND
 1.3229 ACRE TRACT OF LAND**
 (VOLUME 596, PAGE 161, D.R.C.C.T. &
 VOLUME 4270, PAGE 2083, D.R.C.C.T.)
 out of
 WILLIAM DAVIS SURVEY, ABSTRACT No. A0248
 CITY OF MCKINNEY, COLLIN COUNTY, TEXAS

PREPARED FOR:	THE SAMARITAN INN 1725 N. McDONALD ST MCKINNEY, TX 75071 (972) 632-1290 (PHONE)	PREPARED	12-05-2012
ENGINEERING & DEVELOPMENT COMPANY, INC.		SURVEYED	NOV. 2012
1512 BRAY CENTRAL DRIVE SUITE 100 MCKINNEY, TEXAS 75069 TX BOARD PROF. ENGINEERS, CERT. #000481; TX BOARD PROF. LAND SURVEYING, CERT. 104231-09	(214) 544-8880 PHONE (214) 544-8882 FAX www.PoseEngineering.com	SCALE:	1" = 60'
		PI NUMBER	1529-12-065
		DRAWN BY:	RND
		CHECKED BY:	RPP