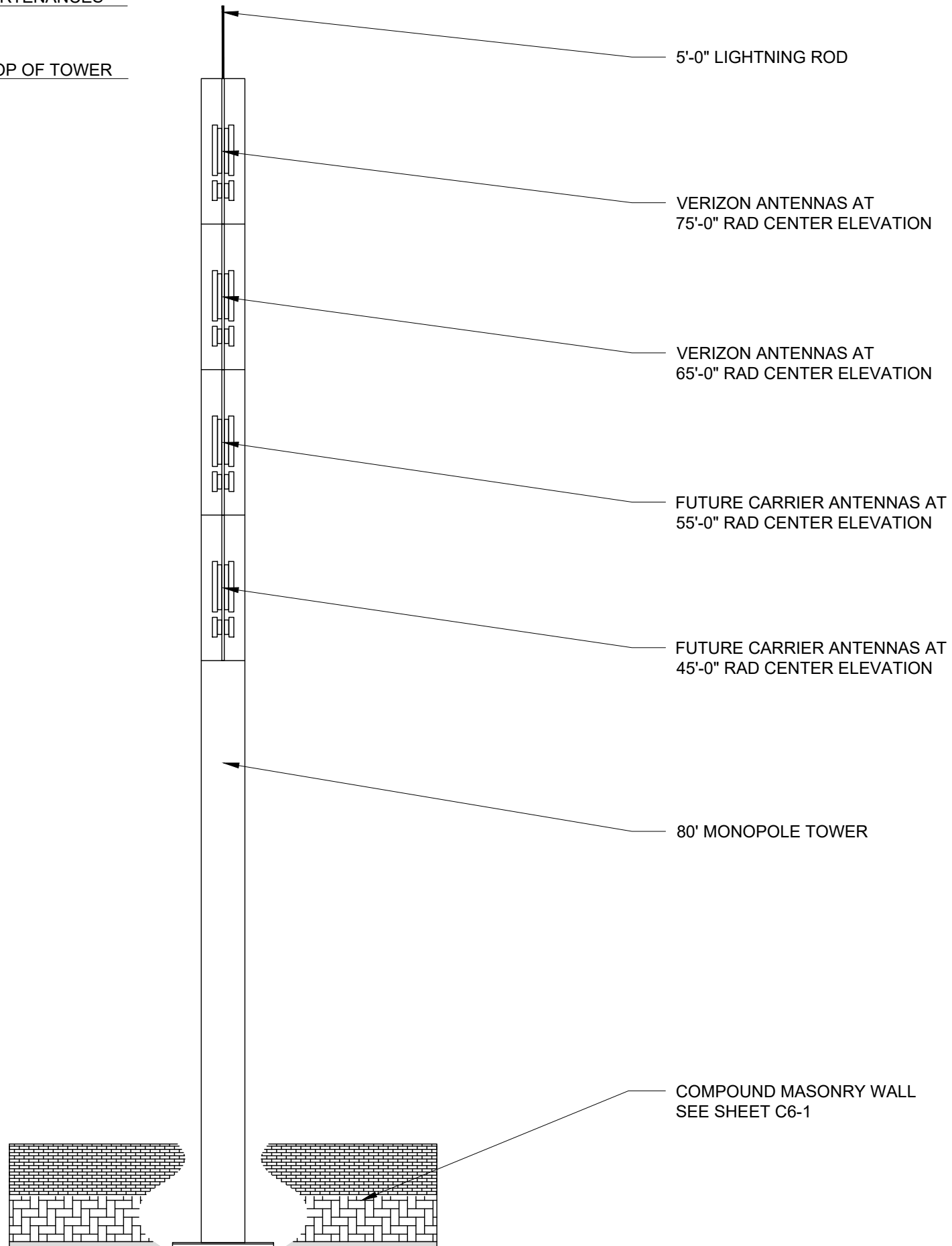


85'-0" TOTAL HEIGHT WITH APPURTENANCES

80'-0" TOP OF TOWER

THESE DRAWINGS ARE NOT INTENDED TO REFLECT THE STRUCTURAL INTEGRITY OF THE TOWER. THE PROPOSED ANTENNAS AND TRANSMISSION LINES SHOWN ARE REPRESENTATIVE IN NATURE AND DO NOT REFLECT THE ACTUAL CONFIGURATIONS REQUIRED. THE CONTRACTOR SHALL REFER TO THE STRUCTURAL ANALYSIS OF THIS TOWER SITE FOR THE APPROVED LOCATION AND CONFIGURATION OF ALL ANTENNAS AND TRANSMISSION LINES. ALL ANTENNAS MUST BE MOUNTED AND THE TRANSMISSION LINES CONFIGURED IN STRICT ACCORDANCE WITH THE STRUCTURAL ANALYSIS.



**HEMPHILL®**

1305 NORTH LOUISVILLE AVE  
TULSA, OK 74115  
(918) 834-2200

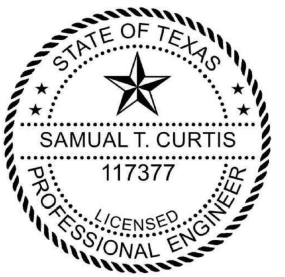


STS (SPECIALTY TELECOMMUNICATIONS  
CONSULTANTS, LLC)  
13431 BROADWAY EXT., SUITE 120,  
OKLAHOMA CITY, OK 73114

PROJECT NO:	1640
PROJECT NAME:	WESTRIDGE
911 ADDRESS:	TBD
DRAWN BY:	RGH
CHECKED BY:	MK/SLT/JRH

ISSUED FOR:  
APPROVAL

REV	DATE	DESCRIPTION
0	03/24/21	FOR APPROVAL



SAMUAL T. CURTIS, P.E.  
TEXAS NO. 117377

SCALE  
N.T.S.

TOWER  
ELEVATION

SHEET NUMBER:	REVISION:
C3-1	0