



REVISIONS

NO.	DESCRIPTION	DATE

										
S1 - STONE MANUFACTURER: DFW STONE SUPPLY CUT: CHOPPED STONE COLOR: OKLAHOMA GOLDEN MORTAR: LIGHT BUFF	B1 - BRICK MANUFACTURER: ACME SIZE: KING COLOR: SHENANDOAH MORTAR: PLAIN GRAY	P1 - PAINT MANUFACTURER: SHERWIN WILLIAMS COLOR: MACADEMIA, SW6142	P2 - PAINT MANUFACTURER: SHERWIN WILLIAMS COLOR: HOPSACK, SW6109	P3 - PAINT MANUFACTURER: SHERWIN WILLIAMS COLOR: SNOWFALL, SW6000	P4 - PAINT MANUFACTURER: SHERWIN WILLIAMS COLOR: TURKISH COFFEE, SW6074	P5 - PAINT MANUFACTURER: SHERWIN WILLIAMS COLOR: URBAN BRONZE, SW7048	P6 - PAINT MANUFACTURER: SHERWIN WILLIAMS COLOR: TURKISH COFFEE, SW6074	P7 - PAINT MANUFACTURER: SHERWIN WILLIAMS COLOR: URBAN BRONZE, SW7048	M1 - METAL MANUFACTURER: BERRIDGE COLOR: CHARCOAL GREY	R1 - ROOF MANUFACTURER: GAF LINE: THERMINE HD COLOR: PEWTER GRAY

FACADE MATERIAL %				
BRICK	STONE	STUCCO	FIBER CEMENT ACCENT	TOTAL
282 S.F.	330 S.F.	26 S.F.	12 S.F.	650 S.F.
43%	51%	4%	2%	100%

ARCHITECTURAL AND SITE ENHANCEMENTS

- ① MULTIPLE MASONRY
- ② DORMERS
- ③ TOWERS
- ④ PRIVATE BALCONIES
- ⑤ METAL AWNINGS/ROOF
- ⑥ VENTS
- ⑦ CAST STONE/BRICK HEADING/TRIM
- ⑧ CAST STONE ARCHES
- ⑨ BRACKETS
- ⑩ BAY WINDOWS



4 REAR SOUTHEAST ELEVATION - CLUBHOUSE
SCALE 1/4"=1'-0"

MCKINNEY POINTE
198 APARTMENTS IN MCKINNEY, TX FOR:
ABBY DEVELOPMENT

REVISED CITY
ELEVATION SUBMITTAL
ISSUED
DEC. 16, 2015

BGO
architects
4202 Beltway Drive
Addison, TX 75001
214.520.8878
bgoarchitects.com

DATE
07-06-15
PROJECT
13193
SHEET NUMBER

A2-25a
CLUB ELEV.

COPYRIGHT © Beeler, Guest, Owens Architects All Rights Reserved



REVISIONS

MCKINNEY POINTE
 198 APARTMENTS IN MCKINNEY, TX FOR:
ABBY DEVELOPMENT

REVISED CITY
 ELEVATION SUBMITTAL
 ISSUED
 DEC. 16, 2015

BGO
 architects
 4202 Beltway Drive
 Addison, TX 75001
 214.520.8878
 bgoarchitects.com

DATE
07-06-15

PROJECT
13193

SHEET NUMBER

A2-34
 7 CAR GARAGE
 ELEVATIONS

FACADE MATERIAL %				
BRICK	STONE	STUCCO	FIBER CEMENT ACCENT	TOTAL
216 S.F.	148 S.F.	0 S.F.	44 S.F.	408 S.F.
53%	36%	0%	11%	100%



3 7 CAR GARAGE END ELEVATION
 SCALE: 1/4"=1'-0"

FACADE MATERIAL %				
BRICK	STONE	STUCCO	FIBER CEMENT ACCENT	TOTAL
381 S.F.	270 S.F.	0 S.F.	0 S.F.	651 S.F.
59%	41%	0%	0%	100%



2 2 CAR GARAGE REAR ELEVATION
 SCALE: 1/4"=1'-0"

FACADE MATERIAL %				
BRICK	STONE	STUCCO	FIBER CEMENT ACCENT	TOTAL
177 S.F.	60 S.F.	0 S.F.	0 S.F.	237 S.F.
75%	25%	0%	0%	100%



1 7 CAR GARAGE FRONT ELEVATION
 SCALE: 1/4"=1'-0"

COPYRIGHT © Beiler Guest, Owners, Architects ALL RIGHTS RESERVED



7 MAINT. WEST ELEVATION
SCALE 1/4"=1'-0"

FACADE MATERIAL %				
BRICK	STONE	STUCCO	FIBER CEMENT ACCENT	TOTAL
77 S.F.	53 S.F.	0 S.F.	0 S.F.	130 S.F.
59%	41%	0%	0%	100%



6 MAINT. NORTH ELEVATION
SCALE 1/4"=1'-0"

FACADE MATERIAL %				
BRICK	STONE	STUCCO	FIBER CEMENT ACCENT	TOTAL
75 S.F.	50 S.F.	0 S.F.	0 S.F.	125 S.F.
60%	40%	0%	0%	100%



5 MAINT. EAST ELEVATION
SCALE 1/4"=1'-0"

FACADE MATERIAL %				
BRICK	STONE	STUCCO	FIBER CEMENT ACCENT	TOTAL
68 S.F.	43 S.F.	0 S.F.	0 S.F.	111 S.F.
61%	39%	0%	0%	100%



4 MAINT. SOUTH ELEVATION
SCALE 1/4"=1'-0"

FACADE MATERIAL %				
BRICK	STONE	STUCCO	FIBER CEMENT ACCENT	TOTAL
55 S.F.	31 S.F.	0 S.F.	0 S.F.	86 S.F.
64%	36%	0%	0%	100%



REVISIONS

NO.	DATE	DESCRIPTION

MCKINNEY POINTE
198 APARTMENTS IN MCKINNEY, TX FOR:
ABBY DEVELOPMENT

REVISED CITY
ELEVATION SUBMITTAL
ISSUED
DEC. 16, 2015

BGO
architects
4202 Beltway Drive
Addison, TX 75001
214.520.8878
bgoarchitects.com

DATE
07-06-15

PROJECT
13193

SHEET NUMBER

A2-51
MAINTENANCE
BUILDING

COPYRIGHT © Beiler, Guest, Owens Architects ALL RIGHTS RESERVED



REVISIONS

NO.	DATE	DESCRIPTION

MCKINNEY POINTE
 198 APARTMENTS IN MCKINNEY, TX FOR:
ABBY DEVELOPMENT

REVISED CITY
 ELEVATION SUBMITTAL
 ISSUED
 DEC. 16, 2015



4202 Beltway Drive
 Addison, TX 75001
 214.520.8878
 bgoarchitects.com

DATE
 07-06-15

PROJECT
 13193

SHEET NUMBER

A2-61

TRASH
 ENCLOSURE

COPYRIGHT © Beeler, Guest, Owens Architects All Rights Reserved

									
S1 - STONE MANUFACTURER: DFW STONE SUPPLY CUT: CHOPPED STONE COLOR: OKLAHOMA GOLDEN MORTAR: LIGHT BUFF BASE	B1 - BRICK MANUFACTURER: ACME SIZE: KING COLOR: SHENANDOAH MORTAR: PLAIN GRAY	F1 - PAINT MANUFACTURER: SHERWIN WILLIAMS COLOR: MACADEMA, SW6142 UPPER STUCCO ON GABLES & TOWERS, ACCENT STUCCO BALCONY SIDING	F2 - PAINT MANUFACTURER: SHERWIN WILLIAMS COLOR: HOPSACK, SW6109	F3 - PAINT MANUFACTURER: SHERWIN WILLIAMS COLOR: SNOWFALL, SW6000 PRIMARY TRIM, WINDOW TRIM, FASCIAS	F4 - PAINT MANUFACTURER: SHERWIN WILLIAMS COLOR: TURKISH COFFEE, SW6076 DOORS, MEDALLIONS	F5 - PAINT MANUFACTURER: SHERWIN WILLIAMS COLOR: URBAN BRONZE, SW7048 GUARDRAILS	W1 - WINDOWS MANUFACTURER: PLY-DEM COLOR: BEIGE	M1 - METAL MANUFACTURER: BERRIDGE COLOR: CHARCOAL GREY	R1 - ROOF MANUFACTURER: GAF LINE: THERLINE HD COLOR: PEWTER GRAY

FACADE MATERIAL %				
BRICK	STONE	STUCCO	FIBER CEMENT ACCENT	TOTAL
27 S.F.	15 S.F.	0 S.F.	0 S.F.	42 S.F.
64%	36%	0%	0%	100%



2 TRASH ENCLOSURE-FRONT ELEVATION
 SCALE: 1/2" = 1'-0"



REVISIONS

MCKINNEY POINTE
 198 APARTMENTS IN MCKINNEY, TX FOR:
ABBY DEVELOPMENT

REVISED CITY
 ELEVATION SUBMITTAL
 ISSUED
 DEC. 16, 2015

BGO
 architects
 4202 Beltway Drive
 Addison, TX 75001
 214.520.8878
 bgoarchitects.com

DATE
 07-06-15

PROJECT
 13193

SHEET NUMBER

A2-62
 TRASH ELEV./
 SECTION

COPYRIGHT © Beeler Guest, Owners Architects All Rights Reserved

									
S1 - STONE MANUFACTURER: DFW STONE SUPPLY CUT: CHOPPED STONE COLOR: OKLAHOMA GOLDEN MORTAR: LIGHT BUFF BASE	B1 - BRICK MANUFACTURER: ACME SIZE: KING COLOR: SHENANDOAH MORTAR: FLAIN GRAY	P1 - PAINT MANUFACTURER: SHERWIN WILLIAMS COLOR: MACADAMIA SW6142 UPPER STUCCO ON GABLES & TOWERS, BALCONY SIDING	P2 - PAINT MANUFACTURER: SHERWIN WILLIAMS COLOR: HOPBACK SW6109 ACCENT STUCCO	P3 - PAINT MANUFACTURER: SHERWIN WILLIAMS COLOR: SNOWFALL SW6000 PRIMARY TRIM, WINDOW TRIM, FASCIAS	P4 - PAINT MANUFACTURER: SHERWIN WILLIAMS COLOR: TURKISH COFFEE SW6076 DOORS, MEDALLIONS	P5 - PAINT MANUFACTURER: SHERWIN WILLIAMS COLOR: URBAN BRONZE SW7048 GUARDFAILS	W1 - WINDOWS MANUFACTURER: PLY-GEM COLOR: BEIGE	M1 - METAL MANUFACTURER: BERRIDGE COLOR: CHARCOAL GREY	R1 - ROOF MANUFACTURER: GAF LINE: TIMELINE HD COLOR: FEWTER GRAY

FACADE MATERIAL %				
BRICK	STONE	STUCCO	FIBER CEMENT ACCENT	TOTAL
200 S.F.	94 S.F.	0 S.F.	0 S.F.	294 S.F.
68%	32%	0%	0%	100%



6 TRASH ENCLOSURE-WEST ELEVATION
 SCALE: 1/2"=1'-0"



S1 - STONE
 MANUFACTURER: DFW STONE SUPPLY
 CUT: CHOPPED STONE
 COLOR: OKLAHOMA GOLDEN
 MORTAR: LIGHT BUFF
 BASE



B1 - BRICK
 MANUFACTURER: ACME
 SIZE: KING
 COLOR: SHENANDOAH
 MORTAR: PLAIN GRAY



P1 - PAINT
 MANUFACTURER: SHERWIN WILLIAMS
 COLOR: MACADEMA, SW6142
 UPPER STUCCO ON GABLES & TOWERS,
 BALCONY SIDING



P2 - PAINT
 MANUFACTURER: SHERWIN WILLIAMS
 COLOR: HOPSACK, SW6109
 ACCENT STUCCO



P3 - PAINT
 MANUFACTURER: SHERWIN WILLIAMS
 COLOR: SNOWFALL, SW6000
 PRIMARY TRIM,
 WINDOW TRIM,
 FASCIA



P4 - PAINT
 MANUFACTURER: SHERWIN WILLIAMS
 COLOR: TURKISH COFFEE, SW6076
 DOORS, MEDALLIONS



P5 - PAINT
 MANUFACTURER: SHERWIN WILLIAMS
 COLOR: URBAN BRONZE, SW7048
 GUARDRAILS



W1 - WINDOWS
 MANUFACTURER: PLY-DEM
 COLOR: BEIGE

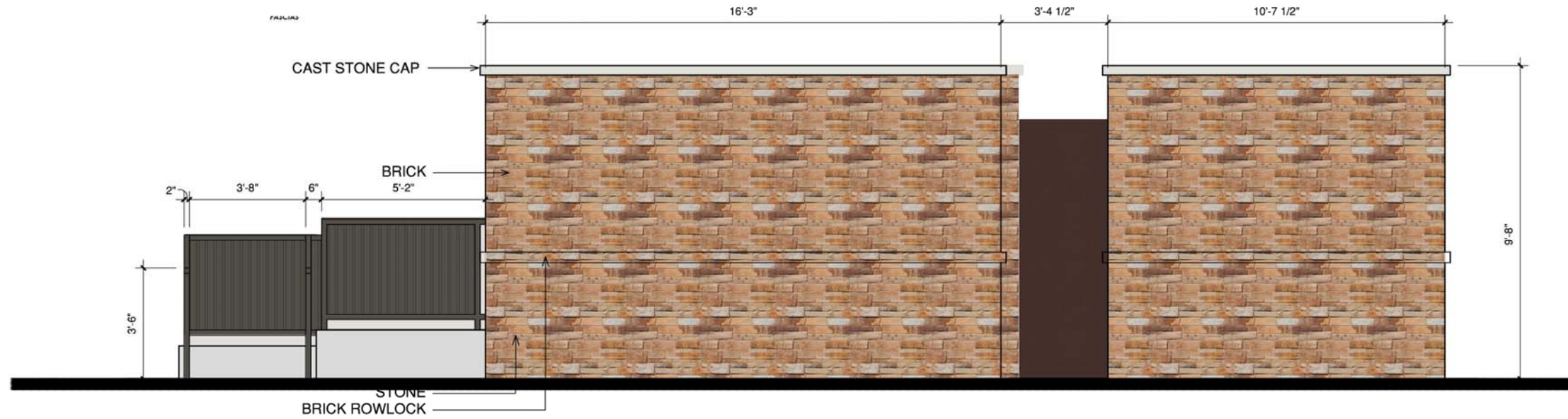


M1 - METAL
 MANUFACTURER: BERRIDGE
 COLOR: CHARCOAL GREY



R1 - ROOF
 MANUFACTURER: GAF
 LINE: TIMERLINE HD
 COLOR: FEWTER GRAY

FACADE MATERIAL %				
BRICK	STONE	STUCCO	FIBER CEMENT ACCENT	TOTAL
159 S.F.	99 S.F.	0 S.F.	0 S.F.	258 S.F.
62%	38%	0%	0%	100%



6 TRASH ENCLOSURE-SOUTH ELEVATION
 SCALE: 1/2"=1'-0"

FACADE MATERIAL %				
BRICK	STONE	STUCCO	FIBER CEMENT ACCENT	TOTAL
199 S.F.	124 S.F.	0 S.F.	0 S.F.	323 S.F.
62%	38%	0%	0%	100%



6 TRASH ENCLOSURE-EAST ELEVATION
 SCALE: 1/2"=1'-0"



REVISIONS

MCKINNEY POINTE
 198 APARTMENTS IN MCKINNEY, TX FOR:
ABBY DEVELOPMENT

REVISED CITY
 ELEVATION SUBMITTAL
 ISSUED
 DEC. 16, 2015

BGO
 architects
 4202 Beltway Drive
 Addison, TX 75001
 214.520.8878
 bgoarchitects.com

DATE
 07-06-15

PROJECT
 13193

SHEET NUMBER

A2-63
 TRASH ELEV./
 SECTION

COPYRIGHT © Beeler Guest Owens Architects ALL RIGHTS RESERVED

REVISIONS



ARCHITECTURAL AND SITE ENHANCEMENTS

- ① MULTIPLE MASONRY
- ② DORMERS
- ③ TOWERS
- ④ PRIVATE BALCONIES
- ⑤ METAL AWNINGS/ROOF
- ⑥ VENTS
- ⑦ CAST STONE/BRICK HEADING/TRIM
- ⑧ CAST STONE ARCHES
- ⑨ BRACKETS
- ⑩ BAY WINDOWS
- ⑪ 1,600 S.F. POOL & 419 S.F. POOL DECK
- ⑫ 1,000 S.F. OF ARBOR
- ⑬ 2 BBQ GRILLS W/ SHARED SEATING FOR 8 PEOPLE

FACADE MATERIAL %				
BRICK	STONE	STUCCO	FIBER CEMENT ACCENT	TOTAL
1561 S.F.	1658 S.F.	226 S.F.	784 S.F.	4229 S.F.
37%	39%	5%	19%	100%

*FIBER CEMENT ACCENT = HARDI-BOARD



1 BUILDING 'A' FRONT EAST ELEVATION (BLDG. #1)
SCALE 1/8"=1'-0"

MCKINNEY POINTE

198 APARTMENTS IN MCKINNEY, TX FOR:
ABBY DEVELOPMENT

REVISED CITY
ELEVATION SUBMITTAL
ISSUED
DEC. 16, 2015

BGO
architects

4202 Beltway Drive
Addison, TX 75001
214.520.8878
bgoarchitects.com

DATE
07-06-15

PROJECT
13193

SHEET NUMBER

A4-01a
BLDG. A
ELEV.

COPYRIGHT © Beiler Guest Owens Architects All Rights Reserved

REVISIONS

S1 - STONE MANUFACTURER: DFV STONE SUPPLY CUT: CHOPPED STONE COLOR: OKLAHOMA GOLDEN MORTAR: LIGHT BUFF BASE	B1 - BRICK MANUFACTURER: ACME SIZE: KING COLOR: SHENANDOAH MORTAR: PLAIN GRAY	P1 - PAINT MANUFACTURER: SHERWIN WILLIAMS COLOR: MACADEMA, SW6142 UPPER STUCCO ON GABLES & TOWERS, BALCONY SIDING	P2 - PAINT MANUFACTURER: SHERWIN WILLIAMS COLOR: HOPSACK, SW6109 ACCENT STUCCO	P3 - PAINT MANUFACTURER: SHERWIN WILLIAMS COLOR: SNOWFALL, SW6000 PRIMARY TRIM, WINDOW TRIM, FASCIAL	P4 - PAINT MANUFACTURER: SHERWIN WILLIAMS COLOR: TURKISH COFFEE, SW6076 DOORS, MEDALLIONS	P5 - PAINT MANUFACTURER: SHERWIN WILLIAMS COLOR: URBAN BRONZE, SW7048 GUARDRAILS	W1 - WINDOWS MANUFACTURER: PLY-GEM COLOR: BEIGE	M1 - METAL MANUFACTURER: BERRIDGE COLOR: CHARCOAL GREY	R1 - ROOF MANUFACTURER: GAF LINE: THERMURLE HD COLOR: PEWTER GRAY

ARCHITECTURAL AND SITE ENHANCEMENTS

- ① MULTIPLE MASONRY
- ② DORMERS
- ③ TOWERS
- ④ PRIVATE BALCONIES
- ⑤ METAL AWNINGS/ROOF
- ⑥ VENTS
- ⑦ CAST STONE/BRICK HEADING/TRIM
- ⑧ CAST STONE ARCHES
- ⑨ BRACKETS
- ⑩ BAY WINDOWS
- ⑪ 1,600 S.F. POOL & 419 S.F. POOL DECK
- ⑫ 1,000 S.F. OF ARBOR
- ⑬ 2 BBQ GRILLS W/ SHARED SEATING FOR 8 PEOPLE

FACADE MATERIAL %				
BRICK	STONE	STUCCO	FIBER CEMENT ACCENT	TOTAL
1094 S.F.	1726 S.F.	187 S.F.	1444 S.F.	4451 S.F.
25%	39%	4%	32%	100%

*FIBER CEMENT ACCENT = HARDI-BOARD



2 BUILDING 'A' REAR WEST ELEVATION (BLDG. #1)
SCALE 1/8"=1'-0"

MCKINNEY POINTE
 198 APARTMENTS IN MCKINNEY, TX FOR:
ABBY DEVELOPMENT

REVISED CITY
 ELEVATION SUBMITTAL
 ISSUED
 DEC. 16, 2015

BGO
architects

4202 Beltway Drive
Addison, TX 75007
214.520.8878
bgoarchitects.com

DATE
07-06-15

PROJECT
13193

SHEET NUMBER

A4-01b
BLDG. A
ELEV.

COPYRIGHT © Beeler Guest Owners Architects All Rights Reserved

REVISIONS



S1 - STONE
MANUFACTURER: DFW STONE SUPPLY
CUT: CHOPPED STONE
COLOR: OKLAHOMA GOLDEN
MORTAR: LIGHT BUFF
BASE

B1 - BRICK
MANUFACTURER: ACME
SIZE: KING
COLOR: SHENANDOAH
MORTAR: PLAIN GRAY

P1 - PAINT
MANUFACTURER: SHERWIN WILLIAMS
COLOR: MACADEMIA, SW6142
UPPER STUCCO ON GABLES & TOWERS, ACCENT STUCCO
BALCONY SIDING

P2 - PAINT
MANUFACTURER: SHERWIN WILLIAMS
COLOR: HOPSACK, SW6109
PRIMARY TRIM,
WINDOW TRIM,
FASCIALS

P3 - PAINT
MANUFACTURER: SHERWIN WILLIAMS
COLOR: SNOWFALL, SW6000

P4 - PAINT
MANUFACTURER: SHERWIN WILLIAMS
COLOR: TURKISH COFFEE, SW6076
DOORS, MEDALLIONS

P5 - PAINT
MANUFACTURER: SHERWIN WILLIAMS
COLOR: URBAN BRONZE, SW7048
GUARDRAILS

W1 - WINDOWS
MANUFACTURER: PLY-GEM
COLOR: BEIGE

M1 - METAL
MANUFACTURER: BERRIDGE
COLOR: CHARCOAL GREY

R1 - ROOF
MANUFACTURER: GAF
LINE: THERMURline HD
COLOR: FENSTER GRAY

ARCHITECTURAL AND SITE ENHANCEMENTS

- ① MULTIPLE MASONRY
- ② DORMERS
- ③ TOWERS
- ④ PRIVATE BALCONIES
- ⑤ METAL AWNINGS/ROOF
- ⑥ VENTS
- ⑦ CAST STONE/BRICK HEADING/TRIM
- ⑧ CAST STONE ARCHES
- ⑨ BRACKETS
- ⑩ BAY WINDOWS
- ⑪ 1,600 S.F. POOL & 419 S.F. POOL DECK
- ⑫ 1,000 S.F. OF ARBOR
- ⑬ 2 BBQ GRILLS W/ SHARED SEATING FOR 8 PEOPLE

FACADE MATERIAL %				
BRICK	STONE	STUCCO	FIBER CEMENT ACCENT	TOTAL
1561 S.F.	1658 S.F.	226 S.F.	784 S.F.	4229 S.F.
37%	39%	5%	19%	100%

*FIBER CEMENT ACCENT = HARDI-BOARD



1 BUILDING 'A' FRONT SOUTH ELEVATION (BLDG. #6)
SCALE 1/8"=1'-0"

MCKINNEY POINTE
198 APARTMENTS IN MCKINNEY, TX FOR:
ABBY DEVELOPMENT

REVISED CITY
ELEVATION SUBMITTAL
ISSUED
DEC. 16, 2015

BGO
architects
4202 Beltway Drive
Addison, TX 75001
214.520.8878
bgoarchitects.com

DATE
07-06-15

PROJECT
13193

SHEET NUMBER

A4-01c
BLDG. A
ELEV.

COPYRIGHT © Beeler Guest Owens Architects. ALL RIGHTS RESERVED.

REVISIONS



ARCHITECTURAL AND SITE ENHANCEMENTS

- ① MULTIPLE MASONRY
- ② DORMERS
- ③ TOWERS
- ④ PRIVATE BALCONIES
- ⑤ METAL AWNINGS/ROOF
- ⑥ VENTS
- ⑦ CAST STONE/BRICK HEADING/TRIM
- ⑧ CAST STONE ARCHES
- ⑨ BRACKETS
- ⑩ BAY WINDOWS
- ⑪ 1,600 S.F. POOL & 419 S.F. POOL DECK
- ⑫ 1,000 S.F. OF ARBOR
- ⑬ 2 BBQ GRILLS W/ SHARED SEATING FOR 8 PEOPLE

FAÇADE MATERIAL %				
BRICK	STONE	STUCCO	FIBER CEMENT ACCENT	TOTAL
1094 S.F.	1726 S.F.	187 S.F.	1444 S.F.	4451 S.F.
25%	39%	4%	32%	100%

*FIBER CEMENT ACCENT = HARDI-BOARD



2 BUILDING 'A' REAR NORTH ELEVATION (BLDG. #6)
SCALE 1/8"=1'-0"

MCKINNEY POINTE
198 APARTMENTS IN MCKINNEY, TX FOR:
ABBY DEVELOPMENT

REVISED CITY
ELEVATION SUBMITTAL
ISSUED
DEC. 16, 2015

BGO
architects

4202 Beltway Drive
Addison, TX 75001
214.520.8878
bgoarchitects.com

DATE
07-06-15

PROJECT
13193

SHEET NUMBER

A4-01d
BLDG. A
ELEV.

COPYRIGHT © Beeler, Guest, Owens Architects All Rights Reserved



REVISIONS

MCKINNEY POINTE
 198 APARTMENTS IN MCKINNEY, TX FOR:
ABBY DEVELOPMENT

REVISED CITY
 ELEVATION SUBMITTAL
 ISSUED:
 DEC. 16, 2015



4202 Beltway Drive
 Addison, TX 75001
 214.520.8878
 bgoarchitects.com

DATE

07-06-15

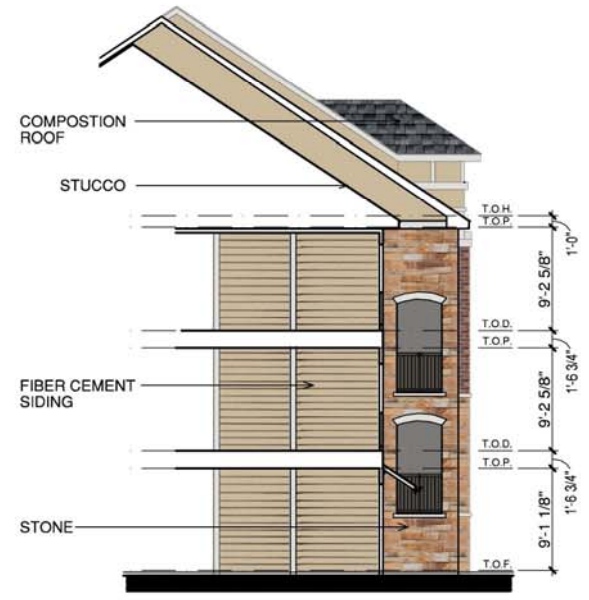
PROJECT

13193

SHEET NUMBER

A4-02
 BLDG. A
 ELEV.

COPYRIGHT © Beiler, Owens Architects All Rights Reserved



5 BUILDING 'A-HC' INTERIOR COURT ELEVATION
 SCALE 1/8"=1'-0"

FACADE MATERIAL %				
BRICK	STONE	STUCCO	FIBER CEMENT ACCENT	TOTAL
714 S.F.	1142 S.F.	208 S.F.	18 S.F.	2082 S.F.
34%	55%	10%	1%	100%

*FIBER CEMENT ACCENT = HARDI-BOARD



3 BUILDING 'A' END NORTH ELEVATION (BLDG. #1)
 SCALE 1/8"=1'-0"

50% OF WALLS FACING ROW
 FEATURE WINDOWS

S1 - STONE MANUFACTURER: DFW STONE SUPPLY CUT: CHOPPED STONE COLOR: OKLAHOMA GOLDEN MORTAR: LIGHT BUFF	B1 - BRICK MANUFACTURER: ACME SIZE: KING COLOR: SHENANDOAH MORTAR: PLAIN GRAY	P1 - PAINT MANUFACTURER: SHERWIN WILLIAMS COLOR: MACADEMA, SW6142 UPPER STUCCO ON GABLES & TOWERS, ACCENT STUCCO BALCONY SIDING	P2 - PAINT MANUFACTURER: SHERWIN WILLIAMS COLOR: HOPSACK, SW6109	P3 - PAINT MANUFACTURER: SHERWIN WILLIAMS COLOR: SNOWFALL, SW6000 PRIMARY TRIM, WINDOW TRIM, FASCIAE	P4 - PAINT MANUFACTURER: SHERWIN WILLIAMS COLOR: TURKISH COFFEE, SW6076 DOORS, MEDALLIONS	P5 - PAINT MANUFACTURER: SHERWIN WILLIAMS COLOR: URBAN BRONZE, SW7048 GUARDRAILS	P6 - PAINT MANUFACTURER: SHERWIN WILLIAMS COLOR: URBAN BRONZE, SW7048	W1 - WINDOWS MANUFACTURER: PLY-GEM COLOR: BEIGE	M1 - METAL MANUFACTURER: BERRIDGE COLOR: CHARCOAL GREY	R1 - ROOF MANUFACTURER: GAF LINE: THERLINE HD COLOR: PEWTER GRAY

- ARCHITECTURAL AND SITE ENHANCEMENTS
- ① MULTIPLE MASONRY
 - ② DORMERS
 - ③ TOWERS
 - ④ PRIVATE BALCONIES
 - ⑤ METAL AWNINGS/ROOF
 - ⑥ VENTS
 - ⑦ CAST STONE/BRICK HEADER/TRIM
 - ⑧ CAST STONE ARCHES
 - ⑨ BRACKETS
 - ⑩ BAY WINDOWS
 - ⑪ 1,600 S.F. POOL & 419 S.F. POOL DECK
 - ⑫ 1,000 S.F. OF ARBOR
 - ⑬ 2 BBQ GRILLS W/ SHARED SEATING FOR 8 PEOPLE

FACADE MATERIAL %				
BRICK	STONE	STUCCO	FIBER CEMENT ACCENT	TOTAL
715 S.F.	1092 S.F.	204 S.F.	17 S.F.	2028 S.F.
35%	54%	10%	1%	100%

*FIBER CEMENT ACCENT = HARDI-BOARD



4 BUILDING 'A' END SOUTH ELEVATION (BLDG. #1)
 SCALE 1/8"=1'-0"



REVISIONS

MCKINNEY POINTE
 198 APARTMENTS IN MCKINNEY, TX FOR:
ABBY DEVELOPMENT

REVISED CITY
 ELEVATION SUBMITTAL
 ISSUED
 DEC. 16, 2015

BGO
 architects

4202 Beltway Drive
 Addison, TX 75001
 214.520.8878
 bgoarchitects.com

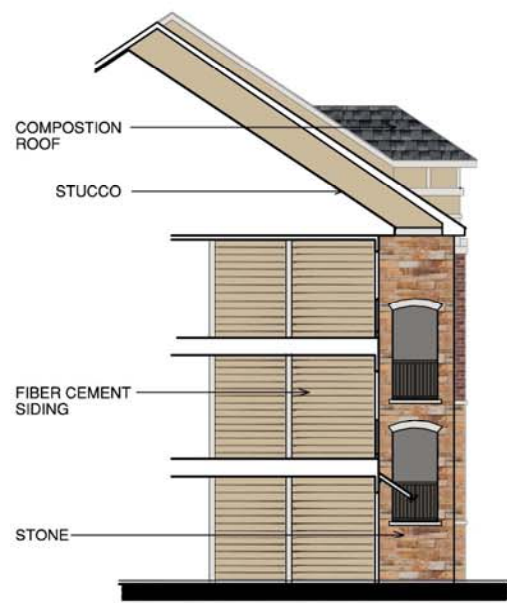
DATE
 07-06-15

PROJECT
 13193

SHEET NUMBER

A4-02a
 BLDG. A
 ELEV.

COPYRIGHT © Beiler, Guest, Owens Architects ALL RIGHTS RESERVED



5 BUILDING 'A-HC' INTERIOR COURT ELEVATION
 SCALE 1/8"=1'-0"

FACADE MATERIAL %				
BRICK	STONE	STUCCO	FIBER CEMENT ACCENT	TOTAL
715 S.F.	1092 S.F.	204 S.F.	17 S.F.	2028 S.F.
35%	54%	10%	1%	100%

*FIBER CEMENT ACCENT = HARDI-BOARD



3 BUILDING 'A' END EAST ELEVATION (BLDG. #6)
 SCALE 1/8"=1'-0"



- ARCHITECTURAL AND SITE ENHANCEMENTS**
- 1 MULTIPLE MASONRY
 - 2 DORMERS
 - 3 TOWERS
 - 4 PRIVATE BALCONIES
 - 5 METAL AWNINGS/ROOF
 - 6 VENTS
 - 7 CAST STONE/BRICK HEADER/TRIM
 - 8 CAST STONE ARCHES
 - 9 BRACKETS
 - 10 BAY WINDOWS
 - 11 1,600 S.F. POOL & 419 S.F. POOL DECK
 - 12 1,000 S.F. OF ARBOR
 - 13 2 BBQ GRILLS W/ SHARED SEATING FOR 8 PEOPLE

FACADE MATERIAL %				
BRICK	STONE	STUCCO	FIBER CEMENT ACCENT	TOTAL
714 S.F.	1142 S.F.	208 S.F.	18 S.F.	2082 S.F.
34%	55%	10%	1%	100%

*FIBER CEMENT ACCENT = HARDI-BOARD



4 BUILDING 'A' END WEST ELEVATION (BLDG. #6)
 SCALE 1/8"=1'-0"



REVISIONS

									
S1 - STONE MANUFACTURER: DFH STONE SUPPLY CUT: CHOPPED STONE COLOR: OKLAHOMA GOLDEN MORTAR: LIGHT BUFF BASE	B1 - BRICK MANUFACTURER: ACME SIZE: KING COLOR: SHENANDOAH MORTAR: PLAIN GRAY	P1 - PAINT MANUFACTURER: SHERWIN WILLIAMS COLOR: MACADEMIA, SW6142 UPPER STUCCO ON GABLES & TOWERS, ACCENT STUCCO BALCONY SIDING	P2 - PAINT MANUFACTURER: SHERWIN WILLIAMS COLOR: HOPSACK, SW6109	P3 - PAINT MANUFACTURER: SHERWIN WILLIAMS COLOR: SNOWFALL, SW6000 PRIMARY TRIM, WINDOW TRIM, FASCIAS	P4 - PAINT MANUFACTURER: SHERWIN WILLIAMS COLOR: TURKISH COFFEE, SW6076 DOORS, MEDALLIONS	P5 - PAINT MANUFACTURER: SHERWIN WILLIAMS COLOR: URBAN BRONZE, SW7048 GUARDRAILS	W1 - WINDOWS MANUFACTURER: PLY-GEM COLOR: BEIGE	M1 - METAL MANUFACTURER: BERRIDGE COLOR: CHARCOAL GREY	R1 - ROOF MANUFACTURER: GAF LINE: TIMEKLINE HD COLOR: PEWTER GRAY

ARCHITECTURAL AND SITE ENHANCEMENTS

- ① MULTIPLE MASONRY
- ② DORMERS
- ③ TOWERS
- ④ PRIVATE BALCONIES
- ⑤ METAL AWNINGS/ROOF
- ⑥ VENTS
- ⑦ CAST STONE/BRICK HEADER/TRIM
- ⑧ CAST STONE ARCHES
- ⑨ BRACKETS
- ⑩ BAY WINDOWS
- ⑪ 1,600 S.F. POOL & 419 S.F. POOL DECK
- ⑫ 1,000 S.F. OF ARBOR
- ⑬ 2 BBQ GRILLS W/ SHARED SEATING FOR 8 PEOPLE

FACADE MATERIAL %				
BRICK	STONE	STUCCO	FIBER CEMENT ACCENT	TOTAL
1352 S.F.	3018 S.F.	221 S.F.	754 S.F.	5345 S.F.
25%	56%	4%	14%	100%

*FIBER CEMENT ACCENT = HARDI-BOARD



1 BUILDING 'B' FRONT EAST ELEVATION (BLDG. #5)
SCALE 1/8"=1'-0"

MCKINNEY POINTE
198 APARTMENTS IN MCKINNEY, TX FOR:
ABBY DEVELOPMENT

REVISED CITY
ELEVATION SUBMITTAL
ISSUED
DEC. 16, 2015

BGO
architects
4202 Beltway Drive
Addison, TX 75001
214.520.8878
bgoarchitects.com

DATE
07-06-15

PROJECT
13193

SHEET NUMBER

A4-11a
BLDG. B
ELEV.

COPYRIGHT © Beiler Owens Architects ALL RIGHTS RESERVED

REVISIONS

									
S1 - STONE MANUFACTURER: DFW STONE SUPPLY CUT: CHOPPED STONE COLOR: OKLAHOMA GOLDEN MORTAR: LIGHT BUFF BASE	B1 - BRICK MANUFACTURER: ACME SIZE: KING COLOR: SHENANDOAH MORTAR: PLAIN GRAY	F1 - PAINT MANUFACTURER: SHERWIN WILLIAMS COLOR: MACADEMIA, SW6142 UPPER STUCCO ON GABLES & TOWERS, ACCENT STUCCO BALCONY SIDING	F2 - PAINT MANUFACTURER: SHERWIN WILLIAMS COLOR: HOPSACK, SW6109	F3 - PAINT MANUFACTURER: SHERWIN WILLIAMS COLOR: SNOWFALL, SW6000 PRIMARY TRIM, WINDOW TRIM, FASCIAS	F4 - PAINT MANUFACTURER: SHERWIN WILLIAMS COLOR: TURKISH COFFEE, SW6076 DOORS, MEDALLIONS	F5 - PAINT MANUFACTURER: SHERWIN WILLIAMS COLOR: URBAN BRONZE, SW7048 GUARDRAILS	W1 - WINDOWS MANUFACTURER: FLY-GEM COLOR: BEIGE	M1 - METAL MANUFACTURER: BERTRIDGE COLOR: CHARCOAL GREY	R1 - ROOF MANUFACTURER: GAF LINE: TOWERLINE HD COLOR: PEWEEK GRAY

ARCHITECTURAL AND SITE ENHANCEMENTS

- ① MULTIPLE MASONRY
- ② DORMERS
- ③ TOWERS
- ④ PRIVATE BALCONIES
- ⑤ METAL AWNINGS/ROOF
- ⑥ VENTS
- ⑦ CAST STONE/BRICK HEADER/TRIM
- ⑧ CAST STONE ARCHES
- ⑨ BRACKETS
- ⑩ BAY WINDOWS
- ⑪ 1,600 S.F. POOL & 419 S.F. POOL DECK
- ⑫ 1,000 S.F. OF ARBOR
- ⑬ 2 BBQ GRILLS W/ SHARED SEATING FOR 8 PEOPLE

FACADE MATERIAL %				
BRICK	STONE	STUCCO	FIBER CEMENT ACCENT	TOTAL
1478 S.F.	3166 S.F.	170 S.F.	1270 S.F.	6084 S.F.
24%	52%	3%	21%	100%

*FIBER CEMENT ACCENT = HARDI-BOARD



2 BUILDING 'B' REAR WEST ELEVATION (BLDG. #5)
SCALE 1/8"=1'-0"

MCKINNEY POINTE
198 APARTMENTS IN MCKINNEY, TX FOR:
ABBY DEVELOPMENT

REVISED CITY
ELEVATION SUBMITTAL
ISSUED
DEC. 16, 2015

BGO
architects
4202 Beltway Drive
Addison, TX 75001
214.520.8878
bgoarchitects.com

DATE
07-06-15

PROJECT
13193
SHEET NUMBER

A4-11b
BLDG. B
ELEV.

COPYRIGHT © Beeler Guest Owners Architects ALL RIGHTS RESERVED

REVISIONS

NO.	DESCRIPTION

									
S1 - STONE MANUFACTURER: DFW STONE SUPPLY CUT: CHOPPED STONE COLOR: OKLAHOMA GOLDEN MORTAR: LIGHT BUFF BASE	S1 - BRICK MANUFACTURER: ACME SIZE: KING COLOR: SHENANDOAH MORTAR: PLAIN GRAY	P1 - PAINT MANUFACTURER: SHERWIN WILLIAMS COLOR: MACADENIA, SW6142 UPPER STUCCO ON GABLES & TOWERS, ACCENT STUCCO BALCONY SIDING	P2 - PAINT MANUFACTURER: SHERWIN WILLIAMS COLOR: HOPSACK, SW6109	P3 - PAINT MANUFACTURER: SHERWIN WILLIAMS COLOR: SNOWFALL, SW6000 PRIMARY TRIM, WINDOW TRIM, FASCIAS	P4 - PAINT MANUFACTURER: SHERWIN WILLIAMS COLOR: TURKISH COFFEE, SW6076 DOORS, MEDALLIONS	P5 - PAINT MANUFACTURER: SHERWIN WILLIAMS COLOR: URBAN BRONZE, SW7048 GUARDRAILS	W1 - WINDOWS MANUFACTURER: PLY-GEM COLOR: BEIGE	M1 - METAL MANUFACTURER: BERRIDGE COLOR: CHARCOAL GREY	R1 - ROOF MANUFACTURER: GAF LINE: THERMURLINE HD COLOR: PEWTER GRAY

ARCHITECTURAL AND SITE ENHANCEMENTS

- 1) MULTIPLE MASONRY
- 2) DORMERS
- 3) TOWERS
- 4) PRIVATE BALCONIES
- 5) METAL AWNINGS/ROOF
- 6) VENTS
- 7) CAST STONE/BRICK HEADER/TRIM
- 8) CAST STONE ARCHES
- 9) BRACKETS
- 10) BAY WINDOWS
- 11) 1,600 S.F. POOL & 419 S.F. POOL DECK
- 12) 1,000 S.F. OF ARBOR
- 13) 2 BBQ GRILLS W/ SHARED SEATING FOR 8 PEOPLE

FACADE MATERIAL %				
BRICK	STONE	STUCCO	FIBER CEMENT ACCENT	TOTAL
1352 S.F.	3018 S.F.	221 S.F.	754 S.F.	5345 S.F.
25%	56%	4%	14%	100%

*FIBER CEMENT ACCENT = HARDI-BOARD



1 BUILDING 'B' FRONT SOUTH ELEVATION (BLDG. #8)
SCALE 1/8"=1'-0"

MCKINNEY POINTE
198 APARTMENTS IN MCKINNEY, TX FOR:
ABBY DEVELOPMENT

REVISED CITY
ELEVATION SUBMITTAL
ISSUED
DEC. 16, 2015

BGO
architects

4202 Beltway Drive
Addison, TX 75001
214.520.8878
bgoarchitects.com

DATE
07-06-15

PROJECT
13193

SHEET NUMBER

A4-11c
BLDG. B
ELEV.

REVISIONS

NO.	DESCRIPTION

S1 - STONE MANUFACTURER: DFW STONE SUPPLY CUT: CHOPPED STONE COLOR: OKLAHOMA GOLDEN MORTAR: LIGHT BUFF BASE	B1 - BRICK MANUFACTURER: ACME SIZE: 1 3/4" COLOR: SHENANDOAH MORTAR: PLAIN GRAY	P1 - PAINT MANUFACTURER: SHERWIN WILLIAMS COLOR: MACADEMIA, SW6142 UPPER STUCCO ON GABLES & TOWERS, ACCENT STUCCO BALCONY SIDING	P2 - PAINT MANUFACTURER: SHERWIN WILLIAMS COLOR: HOPSACK, SW6109	P3 - PAINT MANUFACTURER: SHERWIN WILLIAMS COLOR: SNOWFALL, SW9000 PRIMARY TRIM, WINDOW TRIM, FASCIAS	P4 - PAINT MANUFACTURER: SHERWIN WILLIAMS COLOR: TURKISH COFFEE, SW6076 DOORS, MEDALLIONS	P5 - PAINT MANUFACTURER: SHERWIN WILLIAMS COLOR: URBAN BRONZE, SW7048 GUARDRAILS	W1 - WINDOWS MANUFACTURER: PLY-DEM COLOR: BEIGE	M1 - METAL MANUFACTURER: BERRIDGE COLOR: CHARCOAL GREY	R1 - ROOF MANUFACTURER: GAF LINE: TIMBERLINE HD COLOR: FEWTER GRAY

ARCHITECTURAL AND SITE ENHANCEMENTS

- ① MULTIPLE MASONRY
- ② DORMERS
- ③ TOWERS
- ④ PRIVATE BALCONIES
- ⑤ METAL AWNINGS/ROOF
- ⑥ VENTS
- ⑦ CAST STONE/BRICK HEADER/TRIM
- ⑧ CAST STONE ARCHES
- ⑨ BRACKETS
- ⑩ BAY WINDOWS
- ⑪ 1,600 S.F. POOL & 419 S.F. POOL DECK
- ⑫ 1,000 S.F. OF ARBOR
- ⑬ 2 BBQ GRILLS W/ SHARED SEATING FOR 8 PEOPLE

FACADE MATERIAL %				
BRICK	STONE	STUCCO	FIBER CEMENT ACCENT	TOTAL
1352 S.F.	3018 S.F.	221 S.F.	754 S.F.	5345 S.F.
25%	56%	4%	14%	100%

*FIBER CEMENT ACCENT = HARDI-BOARD



2 BUILDING 'B' REAR NORTH ELEVATION (BLDG. #8)
SCALE 1/8"=1'-0"

MCKINNEY POINTE
 198 APARTMENTS IN MCKINNEY, TX FOR:
ABBY DEVELOPMENT

REVISED CITY
 ELEVATION SUBMITTAL
 ISSUED
 DEC. 16, 2015

BGO
architects

4202 Beltway Drive
Addison, TX 75001
214.520.8878
bgoarchitects.com

DATE
07-06-15

PROJECT
13193

SHEET NUMBER

A4-11d
BLDG. B
ELEV.

COPYRIGHT © Beiler Guest Owens Architects ALL RIGHTS RESERVED



REVISIONS

MCKINNEY POINTE
 198 APARTMENTS IN MCKINNEY, TX FOR:
ABBY DEVELOPMENT

REVISED CITY
 ELEVATION SUBMITTAL
 ISSUED:
 DEC. 16, 2015



4202 Beltway Drive
 Addison, TX 75001
 214.520.8878
 bgoarchitects.com

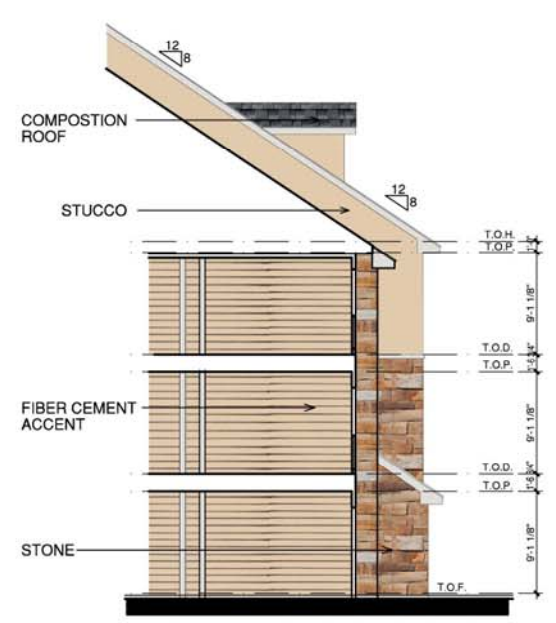
DATE
07-06-15

PROJECT
13193

SHEET NUMBER

A4-12a
 BLDG. B
 ELEV.

COPYRIGHT © Beeler Guest Owens Architects ALL RIGHTS RESERVED



5 BUILDING 'B' INTERIOR COURT ELEVATION
 SCALE 1/8"=1'-0"



FACADE MATERIAL %				
BRICK	STONE	STUCCO	FIBER CEMENT ACCENT	TOTAL
550 S.F.	902 S.F.	288 S.F.	607 S.F.	2347 S.F.
23%	38%	12%	26%	100%

*FIBER CEMENT ACCENT = HARDI-BOARD

3 BUILDING 'B' END SOUTH ELEVATION (BLDG. #5)
 SCALE 1/8"=1'-0"

S1 - STONE MANUFACTURER: DFW STONE SUPPLY C/O: CHOPPED STONE COLOR: OKLAHOMA GOLDEN MORTAR: LIGHT BUFF	B1 - BRICK MANUFACTURER: ACME SIZE: KING COLOR: SHENANDOAH MORTAR: PLAIN GRAY	F1 - PAINT MANUFACTURER: SHERWIN WILLIAMS COLOR: MACADAMIA SW6142	F2 - PAINT MANUFACTURER: SHERWIN WILLIAMS COLOR: HORSACK SW6109	F3 - PAINT MANUFACTURER: SHERWIN WILLIAMS COLOR: SNOWFALL SW6000	F4 - PAINT MANUFACTURER: SHERWIN WILLIAMS COLOR: TURISH COFFEE SW6274	F5 - PAINT MANUFACTURER: SHERWIN WILLIAMS COLOR: URBAN BRONZE SW7046	W1 - WINDOWS MANUFACTURER: PLY-GEM COLOR: BEIGE	M1 - METAL MANUFACTURER: BERRICO COLOR: CHARCOAL GREY	R1 - ROOF MANUFACTURER: GAF LINE: TIMBERLINE HD COLOR: PEWTER GRAY
MORTAR: LIGHT BUFF		UPPER STUCCO ON GABLES & TOWERS BALCONY SIDING		PRIMARY TRIM WINDOW TRIM FASCIAS		DOORS, MEDALLIONS		GUARDRAILS	

FACADE MATERIAL %				
BRICK	STONE	STUCCO	FIBER CEMENT ACCENT	TOTAL
588 S.F.	1023 S.F.	288 S.F.	607 S.F.	2506 S.F.
23%	41%	11%	24%	100%

*FIBER CEMENT ACCENT = HARDI-BOARD

- ARCHITECTURAL AND SITE ENHANCEMENTS**
- (1) MULTIPLE MASONRY
 - (2) DORMERS
 - (3) TOWERS
 - (4) PRIVATE BALCONIES
 - (5) METAL AWNINGS/ROOF
 - (6) VENTS
 - (7) CAST STONE/BRICK HEADER/TRIM
 - (8) CAST STONE ARCHES
 - (9) BRACKETS
 - (10) BAY WINDOWS
 - (11) 1,600 S.F. POOL & 419 S.F. POOL DECK
 - (12) 1,000 S.F. OF ARBOR
 - (13) 2 BBQ GRILLS W/ SHARED SEATING FOR 8 PEOPLE



4 BUILDING 'B' END NORTH ELEVATION (BLDG. #5)
 SCALE 1/8"=1'-0"



FACADE MATERIAL %				
BRICK	STONE	STUCCO	FIBER CEMENT ACCENT	TOTAL
633 S.F.	1050 S.F.	288 S.F.	607 S.F.	2578 S.F.
25%	41%	11%	24%	100%

*FIBER CEMENT ACCENT = HARDI-BOARD



3 BUILDING 'B' END WEST ELEVATION (BLDG. #8)
SCALE 1/8"=1'-0"

- ARCHITECTURAL AND SITE ENHANCEMENTS**
- ① MULTIPLE MASONRY
 - ② DORMERS
 - ③ TOWERS
 - ④ PRIVATE BALCONIES
 - ⑤ METAL AWNINGS/ROOF
 - ⑥ VENTS
 - ⑦ CAST STONE/BRICK HEADER/TRIM
 - ⑧ CAST STONE ARCHES
 - ⑨ BRACKETS
 - ⑩ BAY WINDOWS
 - ⑪ 1,600 S.F. POOL & 419 S.F. POOL DECK
 - ⑫ 1,000 S.F. OF ARBOR
 - ⑬ 2 BBQ GRILLS W/ SHARED SEATING FOR 8 PEOPLE



FACADE MATERIAL %				
BRICK	STONE	STUCCO	FIBER CEMENT ACCENT	TOTAL
646 S.F.	1031 S.F.	288 S.F.	607 S.F.	2572 S.F.
25%	40%	11%	24%	100%

*FIBER CEMENT ACCENT = HARDI-BOARD

4 BUILDING 'B' END EAST ELEVATION (BLDG. #8)
SCALE 1/8"=1'-0"



REVISIONS

NO.	DATE	DESCRIPTION

MCKINNEY POINTE
198 APARTMENTS IN MCKINNEY, TX FOR:
ABBY DEVELOPMENT

REVISED CITY
ELEVATION SUBMITTAL
ISSUED
DEC. 16, 2015

BGO
architects
4202 Beltway Drive
Addison, TX 75001
214.520.8878
bgoarchitects.com

DATE
07-06-15

PROJECT
13193

SHEET NUMBER

A4-12b
BLDG. B
ELEV.

COPYRIGHT © Beeler Owens Architects ALL RIGHTS RESERVED

REVISIONS

S1 - STONE MANUFACTURER: DFW STONE SUPPLY CUT: CHOPPED STONE COLOR: OKLAHOMA GOLDEN MORTAR: LIGHT BUFF BASE	B1 - BRICK MANUFACTURER: ACME SIZE: KING COLOR: SHENANDOAH MORTAR: PLAIN GRAY	P1 - PAINT MANUFACTURER: SHERWIN WILLIAMS COLOR: MACADEMA, SW6142 UPPER STUCCO ON GABLES & TOWERS, ACCENT STUCCO BALCONY SIDING	P2 - PAINT MANUFACTURER: SHERWIN WILLIAMS COLOR: HOPSACK, SW6109	P3 - PAINT MANUFACTURER: SHERWIN WILLIAMS COLOR: SNOWFALL, SW6000 PRIMARY TRIM, WINDOW TRIM, FASCIAS	P4 - PAINT MANUFACTURER: SHERWIN WILLIAMS COLOR: TURKISH COFFEE, SW6076 DOORS, MEDALLIONS	P5 - PAINT MANUFACTURER: SHERWIN WILLIAMS COLOR: URBAN BRONZE, SW7048 GUARDRAILS	W1 - WINDOWS MANUFACTURER: PLY-DEM COLOR: BEIGE	M1 - METAL MANUFACTURER: BRIDGE COLOR: CHARCOAL GREY	R1 - ROOF MANUFACTURER: GAF LINE: THERMINE HD COLOR: PEWTER GRAY

ARCHITECTURAL AND SITE ENHANCEMENTS

- ① MULTIPLE MASONRY
- ② DORMERS
- ③ TOWERS
- ④ PRIVATE BALCONIES
- ⑤ METAL AWNINGS/ROOF
- ⑥ VENTS
- ⑦ CAST STONE/BRICK HEADER/TRIM
- ⑧ CAST STONE ARCHES
- ⑨ BRACKETS
- ⑩ BAY WINDOWS
- ⑪ 1,600 S.F. POOL & 419 S.F. POOL DECK
- ⑫ 1,000 S.F. OF ARBOR
- ⑬ 2 BBQ GRILLS W/ SHARED SEATING FOR 8 PEOPLE

FACADE MATERIAL %				
BRICK	STONE	STUCCO	FIBER CEMENT ACCENT	TOTAL
1036 S.F.	2392 S.F.	202 S.F.	858 S.F.	4488 S.F.
23%	53%	5%	19%	100%

*FIBER CEMENT ACCENT = HARDI-BOARD



1 BUILDING 'C' FRONT SOUTH ELEVATION (BLDG. #4)
SCALE 1/8"=1'-0"

MCKINNEY POINTE
198 APARTMENTS IN MCKINNEY, TX FOR:
ABBY DEVELOPMENT

REVISED CITY
ELEVATION SUBMITTAL
ISSUED
DEC. 16, 2015

BGO
architects

4202 Beltway Drive
Addison, TX 75001
214.520.8878
bgoarchitects.com

DATE
07-06-15

PROJECT
13193

SHEET NUMBER

A4-21
BLDG. C
ELEV.

REVISIONS

									
S1 - STONE MANUFACTURER: DFW STONE SUPPLY CUT: CHIPPED STONE COLOR: OKLAHOMA GOLDEN MORTAR: LIGHT BUFF BASE	S1 - BRICK MANUFACTURER: ACME SIZE: KING COLOR: SHENANDOAH MORTAR: PLAIN GRAY	P1 - PAINT MANUFACTURER: SHERWIN WILLIAMS COLOR: MACADEMIA, SW6142 UPPER STUCCO ON GABLES & TOWERS, ACCENT STUCCO BALCONY SIDING	P2 - PAINT MANUFACTURER: SHERWIN WILLIAMS COLOR: HOPSACK, SW6109	P3 - PAINT MANUFACTURER: SHERWIN WILLIAMS COLOR: SNOWFALL, SW6090 PRIMARY TRIM WINDOW TRIM, FASCIAS	P4 - PAINT MANUFACTURER: SHERWIN WILLIAMS COLOR: TURKISH COFFEE, SW6076 DOORS, MEDALLIONS	P5 - PAINT MANUFACTURER: SHERWIN WILLIAMS COLOR: URBAN BRONZE, SW7048 GUARDRAILS	W1 - WINDOWS MANUFACTURER: PLY-GEM COLOR: BEIGE	M1 - METAL MANUFACTURER: BERTRIDGE COLOR: CHARCOAL GREY	R1 - ROOF MANUFACTURER: GAF LINE: THERMINE HD COLOR: PEWTER GRAY

ARCHITECTURAL AND SITE ENHANCEMENTS

- ① MULTIPLE MASONRY
- ② DORMERS
- ③ TOWERS
- ④ PRIVATE BALCONIES
- ⑤ METAL AWNINGS/ROOF
- ⑥ VENTS
- ⑦ CAST STONE/BRICK HEADER/TRIM
- ⑧ CAST STONE ARCHES
- ⑨ BRACKETS
- ⑩ BAY WINDOWS
- ⑪ 1,600 S.F. POOL & 419 S.F. POOL DECK
- ⑫ 1,000 S.F. OF ARBOR
- ⑬ 2 BBQ GRILLS W/ SHARED SEATING FOR 8 PEOPLE

FACADE MATERIAL %				
BRICK	STONE	STUCCO	FIBER CEMENT ACCENT	TOTAL
1222 S.F.	1956 S.F.	168 S.F.	742 S.F.	4088 S.F.
30%	48%	4%	18%	100%

*FIBER CEMENT ACCENT = HARDI-BOARD



2 BUILDING 'C' REAR NORTH ELEVATION (BLDG. #4)
SCALE 1/8"=1'-0"

56% OF WALLS FACING ROW
FEATURE WINDOWS

MCKINNEY POINTE

198 APARTMENTS IN MCKINNEY, TX FOR:
ABBY DEVELOPMENT

REVISED CITY
ELEVATION SUBMITTAL
ISSUED
DEC. 16, 2015

BGO
architects

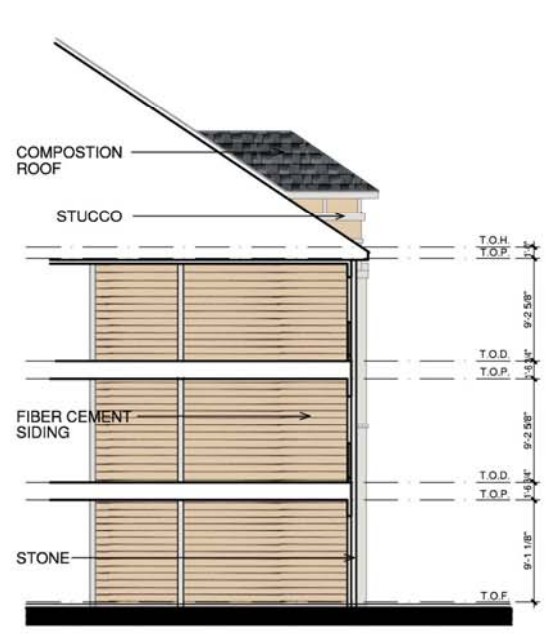
4202 Beltway Drive
Addison, TX 75001
214.520.8878
bgoarchitects.com

DATE
07-06-15

PROJECT
13193

SHEET NUMBER

A4-21a
BLDG. C
ELEV.



5 BUILDING 'C' INTERIOR COURT ELEVATION
 SCALE 1/8"=1'-0"



FACADE MATERIAL %				
BRICK	STONE	STUCCO	FIBER CEMENT ACCENT	TOTAL
491 S.F.	865 S.F.	343 S.F.	800 S.F.	2499 S.F.
20%	35%	14%	32%	100%

*FIBER CEMENT ACCENT = HARDI-BOARD

3 BUILDING 'C' END WEST ELEVATION (BLDG. #4)
 SCALE 1/8"=1'-0"

S1 - STONE MANUFACTURER: DFJ STONE SUPPLY CUT: CHOPPED STONE COLOR: OKLAHOMA GOLDEN MORTAR: LIGHT BUFF	B1 - BRICK MANUFACTURER: ACME SIZE: KING COLOR: SHENANDOAH MORTAR: PLAIN GRAY	F1 - PAINT MANUFACTURER: SHERWIN WILLIAMS COLOR: MACADEMA, SW6142	F2 - PAINT MANUFACTURER: SHERWIN WILLIAMS COLOR: HOPSACK, SW6109	F3 - PAINT MANUFACTURER: SHERWIN WILLIAMS COLOR: SNOWFALL, SW6000	F4 - PAINT MANUFACTURER: SHERWIN WILLIAMS COLOR: TURKISH COFFEE, SW6076	F5 - PAINT MANUFACTURER: SHERWIN WILLIAMS COLOR: URBAN BRONZE, SW7048	W1 - WINDOWS MANUFACTURER: PLY-GEM COLOR: BEIGE	M1 - METAL MANUFACTURER: BERRIDGE COLOR: CHARCOAL GREY	R1 - ROOF MANUFACTURER: GAF LINE: THERLINE HD COLOR: PEWTER GRAY

BASE

- ARCHITECTURAL AND SITE ENHANCEMENTS**
- 1 MULTIPLE MASONRY
 - 2 DORMERS
 - 3 TOWERS
 - 4 PRIVATE BALCONIES
 - 5 METAL AWNINGS/ROOF
 - 6 VENTS
 - 7 CAST STONE/BRICK HEADER/TRIM
 - 8 CAST STONE ARCHES
 - 9 BRACKETS
 - 10 BAY WINDOWS
 - 11 1,600 S.F. POOL & 419 S.F. POOL DECK
 - 12 1,000 S.F. OF ARBOR
 - 13 2 BBQ GRILLS W/ SHARED SEATING FOR 8 PEOPLE



FACADE MATERIAL %				
BRICK	STONE	STUCCO	FIBER CEMENT ACCENT	TOTAL
491 S.F.	849 S.F.	343 S.F.	800 S.F.	2483 S.F.
20%	34%	14%	32%	100%

4 BUILDING 'C' END EAST ELEVATION (BLDG. #4)
 SCALE 1/8"=1'-0"

REVISIONS



- ARCHITECTURAL AND SITE ENHANCEMENTS
- ① MULTIPLE MASONRY
 - ② DORMERS
 - ③ TOWERS
 - ④ PRIVATE BALCONIES
 - ⑤ METAL AWNINGS/ROOF
 - ⑥ VENTS
 - ⑦ CAST STONE/BRICK HEADER/TRIM
 - ⑧ CAST STONE ARCHES
 - ⑨ BRACKETS
 - ⑩ BAY WINDOWS
 - ⑪ 1,600 S.F. POOL & 419 S.F. POOL DECK
 - ⑫ 1,000 S.F. OF ARBOR
 - ⑬ 2 BBQ GRILLS W/ SHARED SEATING FOR 8 PEOPLE

FACADE MATERIAL %				
BRICK	STONE	STUCCO	FIBER CEMENT ACCENT	TOTAL
438 S.F.	946 S.F.	272 S.F.	166 S.F.	1822 S.F.
24%	52%	15%	9%	100%

*FIBER CEMENT ACCENT = HARDI-BOARD



1 BUILDING 'D' FRONT NORTH ELEVATION (BLDG. #3)
SCALE 1/8"=1'-0"

MCKINNEY POINTE

198 APARTMENTS IN MCKINNEY, TX FOR:
ABBY DEVELOPMENT

REVISED CITY ELEVATION SUBMITTAL ISSUED DEC. 16, 2015

BGO architects

4202 Beltway Drive
Addison, TX 75001
214.520.8878
bgoarchitects.com

DATE
07-06-15

PROJECT
13193

SHEET NUMBER
A4-31
BLDG. 'D' ELEV.



REVISIONS

NO.	DESCRIPTION	DATE

MCKINNEY POINTE
 198 APARTMENTS IN MCKINNEY, TX FOR:
ABBY DEVELOPMENT

REVISED CITY
 ELEVATION SUBMITTAL
 ISSUED
 DEC. 16, 2015



4202 Beltway Drive
 Addison, TX 75001
 214.520.8878
 bgoarchitects.com

DATE

07-06-15

PROJECT

13193

SHEET NUMBER

A4-31a
 BLDG. 'D'
 ELEV.

S1 - STONE
 MANUFACTURER: DFJ STONE SUPPLY
 CUT: CHOPPED STONE
 COLOR: OKLAHOMA GOLDEN
 MORTAR: LIGHT BUFF
 BASE

B1 - BRICK
 MANUFACTURER: ACME
 SIZE: KING
 COLOR: SHENANDOAH
 MORTAR: PLAIN GRAY

P1 - PAINT
 MANUFACTURER: SHERWIN WILLIAMS
 COLOR: MACADEMA, SW6142
 UPPER STUCCO ON GABLES & TOWERS, ACCENT STUCCO
 BALCONY SIDING

P2 - PAINT
 MANUFACTURER: SHERWIN WILLIAMS
 COLOR: HOPSACK, SW6109

P3 - PAINT
 MANUFACTURER: SHERWIN WILLIAMS
 COLOR: SNOWTALL, SW6000
 PRIMARY TRIM,
 WINDOW TRIM,
 FASCIA

P4 - PAINT
 MANUFACTURER: SHERWIN WILLIAMS
 COLOR: TURKISH COFFEE, SW6076
 DOORS, MEDALLIONS

P5 - PAINT
 MANUFACTURER: SHERWIN WILLIAMS
 COLOR: URBAN BRONZE, SW7048
 GUARDRAILS

W1 - WINDOWS
 MANUFACTURER: PLY-GEM
 COLOR: BEIGE

M1 - METAL
 MANUFACTURER: BERRIDGE
 COLOR: CHARCOAL GREY

R1 - ROOF
 MANUFACTURER: GAF
 LINE: THERLINE HD
 COLOR: PEWTER GRAY

ARCHITECTURAL AND SITE ENHANCEMENTS

- ① MULTIPLE MASONRY
- ② DORMERS
- ③ TOWERS
- ④ PRIVATE BALCONIES
- ⑤ METAL AWNINGS/ROOF
- ⑥ VENTS
- ⑦ CAST STONE/BRICK HEADER/TRIM
- ⑧ CAST STONE ARCHES
- ⑨ BRACKETS
- ⑩ BAY WINDOWS
- ⑪ 1,600 S.F. POOL & 419 S.F. POOL DECK
- ⑫ 1,000 S.F. OF ARBOR
- ⑬ 2 BBQ GRILLS W/ SHARED SEATING FOR 8 PEOPLE

FACADE MATERIAL %				
BRICK	STONE	STUCCO	FIBER CEMENT ACCENT	TOTAL
532 S.F.	1117 S.F.	414 S.F.	278 S.F.	2341 S.F.
23%	48%	18%	12%	100%

*FIBER CEMENT ACCENT = HARDI-BOARD



2 BUILDING 'D' REAR SOUTH ELEVATION (BLDG. #3)
 SCALE 1/8"=1'-0"

COPYRIGHT © Beeler Owens Architects ALL RIGHTS RESERVED



S1 - STONE
MANUFACTURER: DPW STONE SUPPLY
CUT: CHOPPED STONE
COLOR: OKLAHOMA GOLDEN
MORTAR: LIGHT BUFF
BASE

B1 - BRICK
MANUFACTURER: ACME
SEE: KING
COLOR: SHENANDOAH
MORTAR: PLAIN GRAY

F1 - PAINT
MANUFACTURER: SHERWIN WILLIAMS
COLOR: MACADEMIA, SW6142

F2 - PAINT
MANUFACTURER: SHERWIN WILLIAMS
COLOR: HOPSACK, SW6109

F3 - PAINT
MANUFACTURER: SHERWIN WILLIAMS
COLOR: SNOWFALL, SW6000
PRIMARY TRIM,
WINDOW TRIM,
FASCIAS

F4 - PAINT
MANUFACTURER: SHERWIN WILLIAMS
COLOR: TURKISH COFFEE, SW6076
DOORS, MEDALLIONS

F5 - PAINT
MANUFACTURER: SHERWIN WILLIAMS
COLOR: URBAN BRONZE, SW7048
GUARDRAILS

W1 - WINDOWS
MANUFACTURER: PLY-GEM
COLOR: BEIGE

M1 - METAL
MANUFACTURER: BERRIDGE
COLOR: CHARCOAL GREY

R1 - ROOF
MANUFACTURER: GAF
LINE: THERMURLINE HD
COLOR: PEWTER GRAY

FACADE MATERIAL %				
BRICK	STONE	STUCCO	FIBER CEMENT ACCENT	TOTAL
430 S.F.	669 S.F.	415 S.F.	0 S.F.	1514 S.F.
28%	44%	27%	0%	100%

*FIBER CEMENT ACCENT = HARDI-BEARD



3 BUILDING 'D' END EAST ELEVATION (BLDG. #3)
SCALE 1/8"=1'-0"

REVISIONS

NO.	DATE	DESCRIPTION

MCKINNEY POINTE
198 APARTMENTS IN MCKINNEY, TX FOR:
ABBY DEVELOPMENT

REVISED CITY
ELEVATION SUBMITTAL
ISSUED
DEC. 16, 2015

BGO
architects
4202 Beltway Drive
Addison, TX 75001
214.520.8878
bgoarchitects.com

DATE
07-06-15

PROJECT
13193

SHEET NUMBER

A4-32
BLDG. 'D'
ELEV.

- ARCHITECTURAL AND SITE ENHANCEMENTS
- ① MULTIPLE MASONRY
 - ② DORMERS
 - ③ TOWERS
 - ④ PRIVATE BALCONIES
 - ⑤ METAL AWNINGS/ROOF
 - ⑥ VENTS
 - ⑦ CAST STONE/BRICK HEADER/TRIM
 - ⑧ CAST STONE ARCHES
 - ⑨ BRACKETS
 - ⑩ BAY WINDOWS
 - ⑪ 1,600 S.F. POOL & 419 S.F. POOL DECK
 - ⑫ 1,000 S.F. OF ARBOR
 - ⑬ 2 BBQ GRILLS W/ SHARED SEATING FOR 8 PEOPLE

FACADE MATERIAL %				
BRICK	STONE	STUCCO	FIBER CEMENT ACCENT	TOTAL
430 S.F.	639 S.F.	415 S.F.	0 S.F.	1484 S.F.
29%	43%	28%	0%	100%

*FIBER CEMENT ACCENT = HARDI-BEARD



4 BUILDING 'D' END WEST ELEVATION (BLDG. #3)
SCALE 1/8"=1'-0"

COPYRIGHT © Beiler, Guest, Owens Architects ALL RIGHTS RESERVED



REVISIONS

									
S1 - STONE MANUFACTURER: DFW STONE SUPPLY CUT: CHOPPED STONE COLOR: OKLAHOMA GOLDEN MORTAR: LIGHT BUFF BASE	B1 - BRICK MANUFACTURER: ACME SIZE: KING COLOR: SHENANDOAH MORTAR: PLAIN GRAY	P1 - PAINT MANUFACTURER: SHERWIN WILLIAMS COLOR: MACADEMIA, SW6142 UPPER STUCCO ON GABLES & TOWERS, BALCONY SIDING	P2 - PAINT MANUFACTURER: SHERWIN WILLIAMS COLOR: HOPSACK, SW6109 ACCENT STUCCO	P3 - PAINT MANUFACTURER: SHERWIN WILLIAMS COLOR: SNOWFALL, SW6000 PRIMARY TRIM, WINDOW TRIM, FASCIAS	P4 - PAINT MANUFACTURER: SHERWIN WILLIAMS COLOR: TURKISH COFFEE, SW6076 DOORS, MEDALLIONS	P5 - PAINT MANUFACTURER: SHERWIN WILLIAMS COLOR: URBAN BRONZE, SW7048 GUARDRAILS	W1 - WINDOWS MANUFACTURER: PLY-DEM COLOR: BEIGE	M1 - METAL MANUFACTURER: BERRODGE COLOR: CHARCOAL GREY	R1 - ROOF MANUFACTURER: GAF LINE: IMERLINE HD COLOR: FEWTER GRAY

ARCHITECTURAL AND SITE ENHANCEMENTS

- ① MULTIPLE MASONRY
- ② DORMERS
- ③ TOWERS
- ④ PRIVATE BALCONIES
- ⑤ METAL AWNINGS/ROOF
- ⑥ VENTS
- ⑦ CAST STONE/BRICK HEADER/TRIM
- ⑧ CAST STONE ARCHES
- ⑨ BRACKETS
- ⑩ BAY WINDOWS
- ⑪ 1,600 S.F. POOL & 419 S.F. POOL DECK
- ⑫ 1,000 S.F. OF ARBOR
- ⑬ 2 BBQ GRILLS W/ SHARED SEATING FOR 8 PEOPLE

FACADE MATERIAL %				
BRICK	STONE	STUCCO	FIBER CEMENT ACCENT	TOTAL
1020 S.F.	2776 S.F.	326 S.F.	466 S.F.	4588 S.F.
22%	61%	7%	10%	100%

*FIBER CEMENT ACCENT = HARDI-BOARD



1 BUILDING 'E' FRONT SOUTH ELEVATION (BLDG. #7)
SCALE 1/8"=1'-0"

MCKINNEY POINTE
198 APARTMENTS IN MCKINNEY, TX FOR:
ABBY DEVELOPMENT

REVISED CITY
ELEVATION SUBMITTAL
ISSUED
DEC. 16, 2015

BGO
architects
4202 Beltway Drive
Addison, TX 75001
214.520.8878
bgoarchitects.com

DATE
07-06-15

PROJECT
13193

SHEET NUMBER

A4-41
BLDG. E
ELEV.

COPYRIGHT © Beeler Guest Owens Architects ALL RIGHTS RESERVED



REVISIONS

									
S1 - STONE MANUFACTURER: DFW STONE SUPPLY CUT: CHOPPED STONE COLOR: OKLAHOMA GOLDEN MORTAR: LIGHT BUFF BASE	B1 - BRICK MANUFACTURER: ACME SIZE: KING COLOR: SHENANDOAH MORTAR: PLAIN GRAY	P1 - PAINT MANUFACTURER: SHERWIN WILLIAMS COLOR: MACADEMIA, SW6142 UPPER STUCCO ON GABLES & TOWERS, ACCENT STUCCO BALCONY SIDING	P2 - PAINT MANUFACTURER: SHERWIN WILLIAMS COLOR: HORSRACK, SW6109	P3 - PAINT MANUFACTURER: SHERWIN WILLIAMS COLOR: SNOWFALL, SW6000 PRIMARY TRIM WINDOW TRIM, FASCIAS	P4 - PAINT MANUFACTURER: SHERWIN WILLIAMS COLOR: TURKISH COFFEE, SW6079 DOORS, MEDALLIONS	P5 - PAINT MANUFACTURER: SHERWIN WILLIAMS COLOR: URBAN BRONZE, SW7048 GUARDRAILS	W1 - WINDOWS MANUFACTURER: PLY-GEM COLOR: BEIGE	M1 - METAL MANUFACTURER: BERRIDGE COLOR: CHARCOAL GREY	R1 - ROOF MANUFACTURER: GAF LINE: TIMBERLINE HD COLOR: PEWTER GRAY

- ARCHITECTURAL AND SITE ENHANCEMENTS
- ① MULTIPLE MASONRY
 - ② DORMERS
 - ③ TOWERS
 - ④ PRIVATE BALCONIES
 - ⑤ METAL AWNINGS/ROOF
 - ⑥ VENTS
 - ⑦ CAST STONE/BRICK HEADER/TRIM
 - ⑧ CAST STONE ARCHES
 - ⑨ BRACKETS
 - ⑩ BAY WINDOWS
 - ⑪ 1,600 S.F. POOL & 419 S.F. POOL DECK
 - ⑫ 1,000 S.F. OF ARBOR
 - ⑬ 2 BBQ GRILLS W/ SHARED SEATING FOR 8 PEOPLE

FACADE MATERIAL %				
BRICK	STONE	STUCCO	FIBER CEMENT ACCENT	TOTAL
782 S.F.	1671 S.F.	350 S.F.	1156 S.F.	3959 S.F.
20%	42%	9%	29%	100%

*FIBER CEMENT ACCENT = HARDI-BOARD



2 BUILDING 'E' REAR NORTH ELEVATION (BLDG. #7)
SCALE 1/8"=1'-0"

MCKINNEY POINTE
198 APARTMENTS IN MCKINNEY, TX FOR:
ABBY DEVELOPMENT

REVISED CITY
ELEVATION SUBMITTAL
ISSUED
DEC. 16, 2015

BGO
architects
4202 Beltway Drive
Addison, TX 75001
214.520.8878
bgoarchitects.com

DATE
07-06-15

PROJECT
13193

SHEET NUMBER

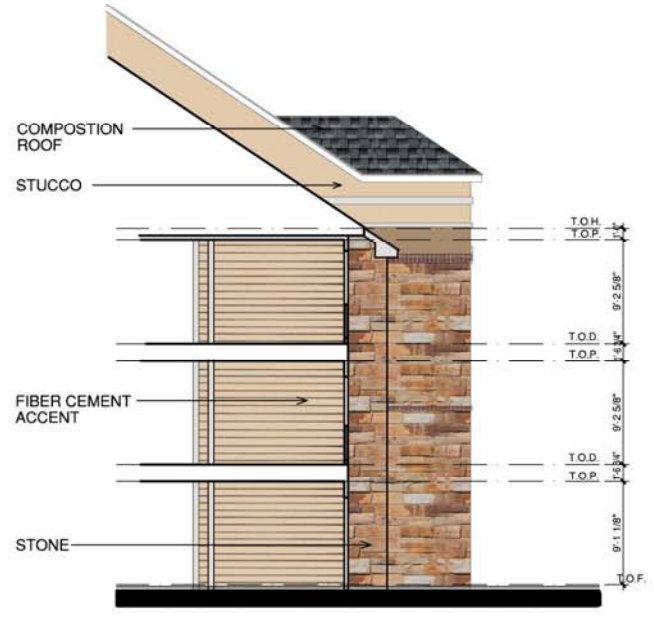
A4-41a

BLDG. E
ELEV.

COPYRIGHT © Beiler Guest Owens Architects ALL RIGHTS RESERVED

FACADE MATERIAL %				
BRICK	STONE	STUCCO	FIBER CEMENT ACCENT	TOTAL
676 S.F.	1028 S.F.	29 S.F.	121 S.F.	1854 S.F.
36%	55%	2%	7%	100%

*FIBER CEMENT ACCENT = HARDI-BOARD



5 BUILDING 'E' INTERIOR COURT ELEVATION
SCALE 1/8"=1'-0"



3 BUILDING 'E' END WEST ELEVATION (BLDG. #7)
SCALE 1/8"=1'-0"

S1 - STONE MANUFACTURER: DFW STONE SUPPLY CUT: CHOPPED STONE COLOR: OKLAHOMA GOLDEN MORTAR: LIGHT BUFF	B1 - BRICK MANUFACTURER: ACME SIZE: KING COLOR: SHEHANDOAH MORTAR: PLAIN GRAY	F1 - FAINT MANUFACTURER: SHERWIN WILLIAMS COLOR: MACADEMA, SW6142	F2 - FAINT MANUFACTURER: SHERWIN WILLIAMS COLOR: HOPSACK, SW6109	F3 - FAINT MANUFACTURER: SHERWIN WILLIAMS COLOR: SNOWFALL, SW6000	F4 - PAINT MANUFACTURER: SHERWIN WILLIAMS COLOR: TURKISH COFFEE, SW6076	F5 - PAINT MANUFACTURER: SHERWIN WILLIAMS COLOR: URBAN BRONZE, SW7048	F6 - PAINT MANUFACTURER: SHERWIN WILLIAMS COLOR: URBAN BRONZE, SW7048	W1 - WINDOWS MANUFACTURER: PLY-DEM COLOR: BEIGE	M1 - METAL MANUFACTURER: BERRIDGE COLOR: CHARCOAL GREY	R1 - ROOF MANUFACTURER: GAF LINE: SIMERLINE HD COLOR: PEWTER GRAY
MORTAR: LIGHT BUFF		MORTAR: PLAIN GRAY		UPPER STUCCO ON GABLES & TOWERS, ACCENT STUCCO BALCONY SIDING		PRIMARY TRIM, WINDOW TRIM, FASCIAS		DOORS, MEDALLIONS		GUARDRAILS

FACADE MATERIAL %				
BRICK	STONE	STUCCO	FIBER CEMENT ACCENT	TOTAL
661 S.F.	1014 S.F.	29 S.F.	121 S.F.	1825 S.F.
36%	56%	2%	7%	100%

*FIBER CEMENT ACCENT = HARDI-BOARD



4 BUILDING 'E' END EAST ELEVATION (BLDG. #7)
SCALE 1/8"=1'-0"

ARCHITECTURAL AND SITE ENHANCEMENTS

- ① MULTIPLE MASONRY
- ② DORMERS
- ③ TOWERS
- ④ PRIVATE BALCONIES
- ⑤ METAL AWNINGS/ROOF
- ⑥ VENTS
- ⑦ CAST STONE/BRICK HEADER/TRIM
- ⑧ CAST STONE ARCHES
- ⑨ BRACKETS
- ⑩ BAY WINDOWS
- ⑪ 1,600 S.F. POOL & 419 S.F. POOL DECK
- ⑫ 1,000 S.F. OF ARBOR
- ⑬ 2 BBQ GRILLS W/ SHARED SEATING FOR 8 PEOPLE

REVISIONS

MCKINNEY POINTE
 198 APARTMENTS IN MCKINNEY, TX FOR:
ABBY DEVELOPMENT

REVISED CITY
 ELEVATION SUBMITTAL
 ISSUED
 DEC. 16, 2015

BGO
 architects
 4202 Beltway Drive
 Addison, TX 75001
 214.520.8878
 bgoarchitects.com

DATE
07-06-15
 PROJECT
13193
 SHEET NUMBER

A4-51
 BLDG. F
 ELEV.

S1 - STONE MANUFACTURER: DW STONE SUPPLY CUT: CHOPPED STONE COLOR: OKLAHOMA GOLDEN MORTAR: LIGHT BUFF BASE	B1 - BRICK MANUFACTURER: ACME SIZE: KING COLOR: SHENANDOAH MORTAR: PLAIN GRAY	P1 - PAINT MANUFACTURER: SHERWIN WILLIAMS COLOR: MACADEMIA, SW6142 UPPER STUCCO ON GABLES & TOWERS, ACCENT STUCCO BALCONY SIDING	P2 - PAINT MANUFACTURER: SHERWIN WILLIAMS COLOR: HOPSACK, SW6109	P3 - PAINT MANUFACTURER: SHERWIN WILLIAMS COLOR: SNOWFALL, SW6000 PRIMARY TRIM, WINDOW TRIM, FASCIAS	P4 - PAINT MANUFACTURER: SHERWIN WILLIAMS COLOR: TURKISH COFFEE, SW6076 DOORS, MEDALLIONS	P5 - PAINT MANUFACTURER: SHERWIN WILLIAMS COLOR: URBAN BRONZE, SW7048 GUARDRAILS	W1 - WINDOWS MANUFACTURER: PLY-DEM COLOR: BEGE	M1 - METAL MANUFACTURER: BERRIDGE COLOR: CHARCOAL GREY	R1 - ROOF MANUFACTURER: GAF LINE: IMERLINE HD COLOR: PEWTER GRAY

- ARCHITECTURAL AND SITE ENHANCEMENTS
- ① MULTIPLE MASONRY
 - ② DORMERS
 - ③ TOWERS
 - ④ PRIVATE BALCONIES
 - ⑤ METAL AWNINGS/ROOF
 - ⑥ VENTS
 - ⑦ CAST STONE/BRICK HEADER/TRIM
 - ⑧ CAST STONE ARCHES
 - ⑨ BRACKETS
 - ⑩ BAY WINDOWS
 - ⑪ 1,600 S.F. POOL & 419 S.F. POOL DECK
 - ⑫ 1,000 S.F. OF ARBOR
 - ⑬ 2 BBQ GRILLS W/ SHARED SEATING FOR 8 PEOPLE

FACADE MATERIAL %				
BRICK	STONE	STUCCO	FIBER CEMENT ACCENT	TOTAL
1158 S.F.	2952 S.F.	564 S.F.	1466 S.F.	6140 S.F.
19%	48%	9%	24%	100%

*FIBER CEMENT ACCENT = HARDI-BOARD



1 BUILDING 'F' FRONT SOUTH ELEVATION (BLDG. #9)
 SCALE 3/32"=1'-0"



REVISIONS

NO.	DATE	DESCRIPTION

MCKINNEY POINTE
 198 APARTMENTS IN MCKINNEY, TX FOR:
ABBY DEVELOPMENT

REVISED CITY
 ELEVATION SUBMITTAL
 ISSUED:
 DEC. 16, 2015



4202 Beltway Drive
 Addison, TX 75001
 214.520.8878
 bgoarchitects.com

DATE

07-06-15

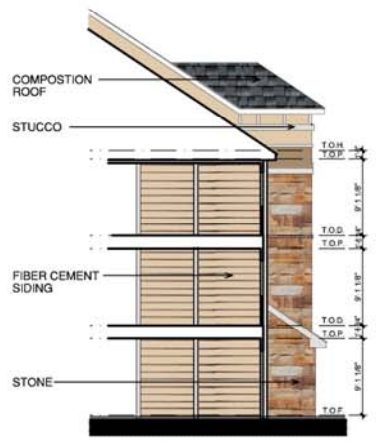
PROJECT

13193

SHEET NUMBER

A4-52
 BLDG. F
 ELEV.

COPYRIGHT © Beeler Guest Owens Architects All Rights Reserved



5 BUILDING 'F' INTERIOR COURT ELEVATION
 SCALE 1/8"=1'-0"

FACADE MATERIAL %				
BRICK	STONE	STUCCO	FIBER CEMENT ACCENT	TOTAL
856 S.F.	1006 S.F.	372 S.F.	421 S.F.	2455 S.F.
27%	41%	15%	17%	100%

*FIBER CEMENT ACCENT = HARDI BOARD



3 BUILDING 'F' END WEST ELEVATION (BLDG. #9)
 SCALE 3/32"=1'-0"

S1 - STONE MANUFACTURER: DFW STONE SUPPLY CUT: CHOPPED STONE COLOR: OKLAHOMA GOLDEN MORTAR: LIGHT BUFF BASE	B1 - BRICK MANUFACTURER: ACME SIZE: KING COLOR: SHENANDOAH MORTAR: PLAIN GRAY	F1 - PAINT MANUFACTURER: SHERWIN WILLIAMS COLOR: MACADEMA, SW6142 UPPER STUCCO ON GABLES & TOWERS, ACCENT STUCCO BALCONY SIDING	F2 - PAINT MANUFACTURER: SHERWIN WILLIAMS COLOR: HOPSACK, SW6109	F3 - PAINT MANUFACTURER: SHERWIN WILLIAMS COLOR: SNOWFALL, SW6000 PRIMARY TRIM, WINDOW TRIM, FASCIAS	F4 - PAINT MANUFACTURER: SHERWIN WILLIAMS COLOR: TURKISH COFFEE, SW6076 DOORS, MEDALLIONS	F5 - PAINT MANUFACTURER: SHERWIN WILLIAMS COLOR: URBAN BRONZE, SW7048 GUARDRAILS	W1 - WINDOWS MANUFACTURER: PLY-GEM COLOR: BEIGE	M1 - METAL MANUFACTURER: BERRIDGE COLOR: CHARCOAL GREY	R1 - ROOF MANUFACTURER: GAF LINE: TIMERLINE HD COLOR: FEWER GRAY

- ARCHITECTURAL AND SITE ENHANCEMENTS
- ① MULTIPLE MASONRY
 - ② DORMERS
 - ③ TOWERS
 - ④ PRIVATE BALCONIES
 - ⑤ METAL AWNINGS/ROOF
 - ⑥ VENTS
 - ⑦ CAST STONE/BRICK HEADER/TRIM
 - ⑧ CAST STONE ARCHES
 - ⑨ BRACKETS
 - ⑩ BAY WINDOWS
 - ⑪ 1,600 S.F. POOL & 419 S.F. POOL DECK
 - ⑫ 1,000 S.F. OF ARBOR
 - ⑬ 2 BBQ GRILLS W/ SHARED SEATING FOR 8 PEOPLE

FACADE MATERIAL %				
BRICK	STONE	STUCCO	FIBER CEMENT ACCENT	TOTAL
843 S.F.	1217 S.F.	372 S.F.	421 S.F.	2853 S.F.
24%	46%	14%	16%	100%

*FIBER CEMENT ACCENT = HARDI BOARD



4 BUILDING 'F' END EAST ELEVATION (BLDG. #9)
 SCALE 3/32"=1'-0"

REVISIONS

NO.	DESCRIPTION



ARCHITECTURAL AND SITE ENHANCEMENTS

- 1 MULTIPLE MASONRY
- 2 DORMERS
- 3 TOWERS
- 4 PRIVATE BALCONIES
- 5 METAL AWNINGS/ROOF
- 6 VENTS
- 7 CAST STONE/BRICK HEADER/TRIM
- 8 CAST STONE ARCHES
- 9 BRACKETS
- 10 BAY WINDOWS
- 11 1,600 S.F. POOL & 419 S.F. POOL DECK
- 12 1,000 S.F. OF ARBOR
- 13 2 BBQ GRILLS W/ SHARED SEATING FOR 8 PEOPLE

FACADE MATERIAL %				
BRICK	STONE	STUCCO	FIBER CEMENT ACCENT	TOTAL
1328 S.F.	2738 S.F.	208 S.F.	542 S.F.	4816 S.F.
28%	57%	4%	11%	100%

*FIBER CEMENT ACCENT = HARDI-BOARD



1 BUILDING 'C1' FRONT SOUTH ELEVATION (BLDG. #10)
SCALE 1/8"=1'-0"

MCKINNEY POINTE
198 APARTMENTS IN MCKINNEY, TX FOR:
ABBY DEVELOPMENT

REVISED CITY
ELEVATION SUBMITTAL
ISSUED
DEC. 16, 2015

BGO
architects

4202 Beltway Drive
Addison, TX 75001
214.520.8878
bgoarchitects.com

DATE
07-06-15

PROJECT
13193

SHEET NUMBER

A4-61
BLDG. C1
ELEV.

COPYRIGHT © Beele, Guest Owens Architects All Rights Reserved



REVISIONS

NO.	DESCRIPTION	DATE

MCKINNEY POINTE
188 APARTMENTS IN MCKINNEY, TX FOR:
ABBY DEVELOPMENT

REVISED CITY
ELEVATION SUBMITTAL
ISSUED
DEC. 16, 2015



4202 Beltway Drive
Addison, TX 75001
214.320.6878
bgoarchitects.com

DATE
07-06-15

PROJECT
13193

SHEET NUMBER

A4-61a
BLDG. C1
ELEV.

 S1 - STONE MANUFACTURER: DFW STONE SUPPLY CUT: CHOPPED STONE COLOR: OKLAHOMA GOLDEN MORTAR: LIGHT BUFF BASE	 B1 - BRICK MANUFACTURER: ACME SIZE: KING COLOR: SHENANDOAH MORTAR: PLAIN GRAY	 F1 - PAINT MANUFACTURER: SHERWIN WILLIAMS COLOR: MACADEMA, SW6142 UPPER STUCCO ON GABLES & TOWERS, ACCENT STUCCO BALCONY SIDING	 F2 - PAINT MANUFACTURER: SHERWIN WILLIAMS COLOR: HOPSACK, SW6109	 F3 - PAINT MANUFACTURER: SHERWIN WILLIAMS COLOR: SNOWFALL, SW6000 PRIMARY TRIM, WINDOW TRIM, FASCIAS	 F4 - PAINT MANUFACTURER: SHERWIN WILLIAMS COLOR: TURKISH COFFEE, SW6074 DOORS, MEDALLIONS	 F5 - PAINT MANUFACTURER: SHERWIN WILLIAMS COLOR: URBAN BRONZE, SW7048 GUARDRAILS	 W1 - WINDOWS MANUFACTURER: FLY-GEM COLOR: BEIGE	 M1 - METAL MANUFACTURER: BERRIDGE COLOR: CHARCOAL GREY	 R1 - ROOF MANUFACTURER: GAF LINE: THERMINE HD COLOR: FEWTER GRAY
--	---	---	--	---	--	---	---	--	---

ARCHITECTURAL AND SITE ENHANCEMENTS

- ① MULTIPLE MASONRY
- ② DORMERS
- ③ TOWERS
- ④ PRIVATE BALCONIES
- ⑤ METAL AWNINGS/ROOF
- ⑥ VENTS
- ⑦ CAST STONE/BRICK HEADER/TRIM
- ⑧ CAST STONE ARCHES
- ⑨ BRACKETS
- ⑩ BAY WINDOWS
- ⑪ 1,600 S.F. POOL & 419 S.F. POOL DECK
- ⑫ 1,000 S.F. OF ARBOR
- ⑬ 2 BBQ GRILLS W/ SHARED SEATING FOR 8 PEOPLE

FACADE MATERIAL %				
BRICK	STONE	STUCCO	FIBER CEMENT ACCENT	TOTAL
1456 S.F.	2072 S.F.	224 S.F.	364 S.F.	4116 S.F.
35%	50%	5%	9%	100%

*FIBER CEMENT ACCENT = HARDI-BOARD



2 BUILDING 'C1' REAR NORTH ELEVATION (BLDGS. #10)
SCALE 1/8"=1'-0"

COPYRIGHT © Beeler Owens Architects ALL RIGHTS RESERVED



REVISIONS

MCKINNEY POINTE
 198 APARTMENTS IN MCKINNEY, TX FOR:
ABBY DEVELOPMENT

REVISED CITY
 ELEVATION SUBMITTAL
 ISSUED
 DEC. 16, 2015

BGO
 architects

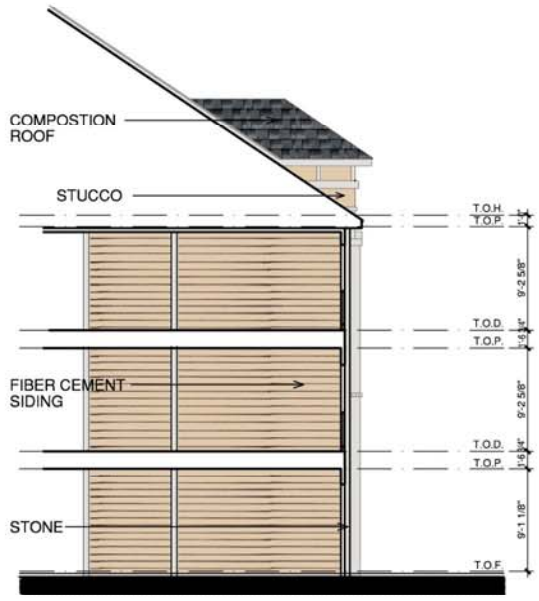
4202 Beltway Drive
 Addison, TX 75001
 214.520.8878
 bgoarchitects.com

DATE
 07-06-15

PROJECT
 13193

SHEET NUMBER

A4-62
 BLDG. C1
 ELEV.



5 BUILDING 'C1' INTERIOR COURT ELEVATION
 SCALE 1/8"=1'-0"



3 BUILDING 'C1' END WEST ELEVATION (BLDGS. #10)
 SCALE 1/8"=1'-0"

S1 - STONE MANUFACTURER: DRW STONE SUPPLY CIVIL CHOPPED STONE COLOR: OKLAHOMA GOLDEN MORTAR: LIGHT BLUFF BASE	B1 - BRICK MANUFACTURER: ACME SIZE: 1NG COLOR: SHENANDOAH MORTAR: PLAIN GRAY	P1 - PAINT MANUFACTURER: SHERWIN WILLIAMS COLOR: MACADAMIA SW6149 UPPER STUCCO ON GABLES & TOWERS, ACCENT STUCCO BALCONY SIDING	P2 - PAINT MANUFACTURER: SHERWIN WILLIAMS COLOR: HOPBACK SW6109	P3 - PAINT MANUFACTURER: SHERWIN WILLIAMS COLOR: SHOWFALL SW6000 PRIMARY TRIM, WINDOW TRIM, FASCIAS	P4 - PAINT MANUFACTURER: SHERWIN WILLIAMS COLOR: TURKISH COFFEE SW6074 DOORS, MEDALLIONS	P5 - PAINT MANUFACTURER: SHERWIN WILLIAMS COLOR: URBAN BRONZE SW7048 GUARDRAILS	W1 - WINDOWS MANUFACTURER: PLY-DEM COLOR: BEIGE	M1 - METAL MANUFACTURER: BERRIDGE COLOR: CHARCOAL GREY	R1 - ROOF MANUFACTURER: GAF LINE: TIMBERLINE HD COLOR: PEWTER GRAY

- ARCHITECTURAL AND SITE ENHANCEMENTS
- ① MULTIPLE MASONRY
 - ② DORMERS
 - ③ TOWERS
 - ④ PRIVATE BALCONIES
 - ⑤ METAL AWNINGS/ROOF
 - ⑥ VENTS
 - ⑦ CAST STONE/BRICK HEADER/TRIM
 - ⑧ CAST STONE ARCHES
 - ⑨ BRACKETS
 - ⑩ BAY WINDOWS
 - ⑪ 1,600 S.F. POOL & 419 S.F. POOL DECK
 - ⑫ 1,000 S.F. OF ARBOR
 - ⑬ 2 BBQ GRILLS W/ SHARED SEATING FOR 8 PEOPLE



4 BUILDING 'C1' END EAST ELEVATION (BLDG. #10)
 SCALE 1/8"=1'-0"

COPYRIGHT © Beeler Owens Architects All Rights Reserved