

Capital Improvement Program Update

May 7, 2013





Presenters

- Engineering Department
 - Matt Richardson, P.E., Infrastructure Construction Projects
- Parks, Recreation, and Open Space Department
 - Lemuel Randolph, Park Construction Projects

TxDOT Projects

- **US 75 Corridor**
 - Sam Rayburn Tollway to White Ave
 - Bloomdale Road to Telephone Road
 - Telephone Road to Melissa Road
 - Corridor Study (IH 635 to SH 121)
- **US 380 Corridor**
 - Lake Forest Drive to Custer Road
 - Custer Road to Denton County Line
- **SH 5 Corridor**
 - Corridor Planning Study
 - Eldorado Pkwy to Country Club Drive

US 75 Corridor (Six Projects)

Sam Rayburn Tollway to SH 121 North

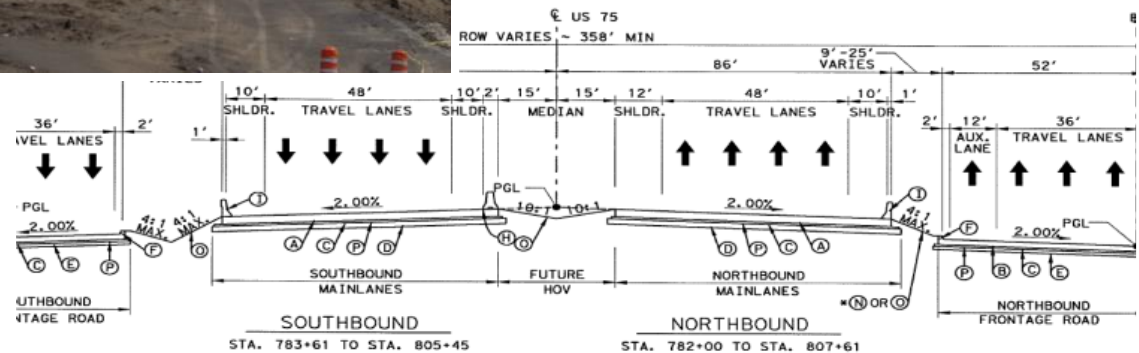


Multiple projects will expand the highway to four main lanes and three frontage road lanes in each direction through McKinney

Construction Cost: \$365 Million

Milestone Dates

- Design Start: 2002
- Construction Start: 2008
- Construction End: 2015



PROPOSED US75 SECTION

Street Projects

- Accessibility Improvement for Public Right-of-Way
- Custer Road Design & ROW (US 380 – FM 1461)
- Flour Mill Infrastructure Phase 1 (Louisiana Street)
- **FM 543 Realignment at US 75**
- FM 546 Replacement (SH 5 – Airport)
- **Intersection Improvements (along Eldorado and Virginia Pkwy)**
- Lake Forest Drive (Wilmeth – Bloomdale)
- Median Lighting
- School Zone Communication Upgrades
- **Stacy Road Lanes 5 & 6 (Ridge – SH 121)**
- **Town Center Infrastructure Phase 2 (Virginia & Kentucky Streets)**
- Traffic Signalization
- Virginia & Louisiana Traffic Calming
- **Virginia Parkway Lanes 5 & 6 (Bellegrove – US 75)**
- **West Street Reconstruction**

Intersection Improvements

Along Eldorado & Virginia Parkways (ST7128)



Construct right-turn and dual left-turn lanes at seven high-volume intersections

Construction Cost: \$2.9 million

Third-Party Participation

- Collin County

Milestone Dates

- Design Start: April 2010
- Construction Start: July 2011
- Construction End: May 2013

West Street Reconstruction

Bonner to Erwin (CO1229)

Reconstruct paving, drainage, water,
and sewer lines

Construction Cost: \$1.1 million

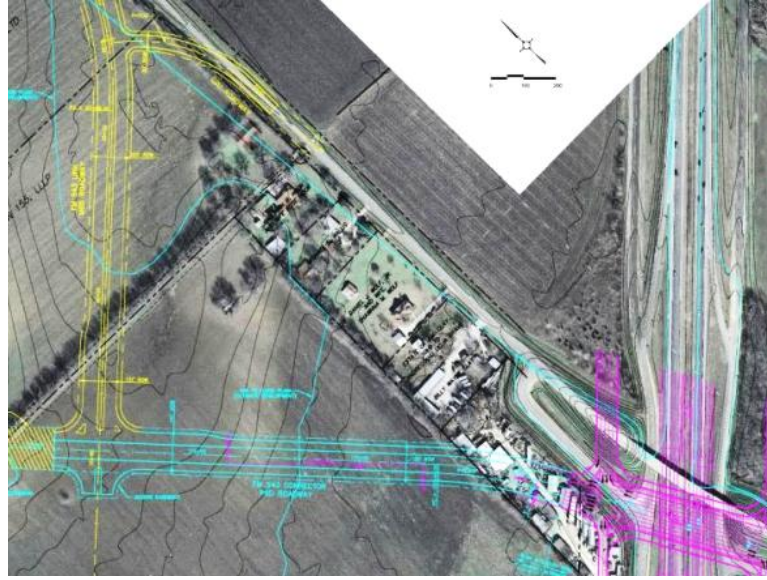
Milestone Dates

- Design Start: October 2006
- Construction Start: November 2012
- Construction End: July 2013



FM 543 Realignment

At US 75 (ST6091)



Realign FM 543 in coordination with the ongoing TxDOT project to reconstruct US 75

Construction Budget: \$3.2 million

Third-Party Participation

- Collin County

Milestone Dates

- Design Start: January 2009
- Construction Start: July 2013
- Construction End: December 2013



Town Center Infrastructure Phase 2

East Virginia, North & South Kentucky (CO1206)

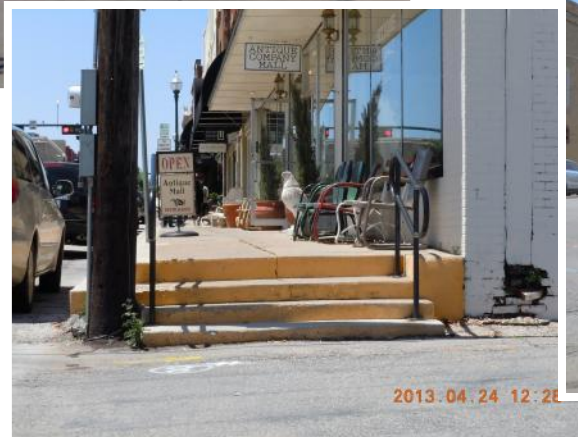
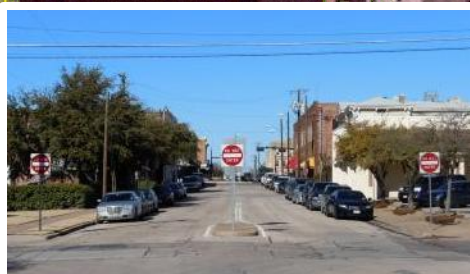


Reconstruct paving, drainage, water, and sewer lines and construct enhanced streetscape elements

Construction Budget: \$3.0 million

Milestone Dates

- Design Start: March 2012
- Construction Start: June 2013
 - Phased Construction
 - Coordinated with Major Events
- Construction End: September 2014



Stacy Road Lanes 5 & 6

Ridge to SH 121 (ST3204)



Construct third lane in each direction on Stacy Road and a right-turn lane from SH 121

Construction Budget: \$1.4 million

Third-Party Participation

- Regional Toll Revenue

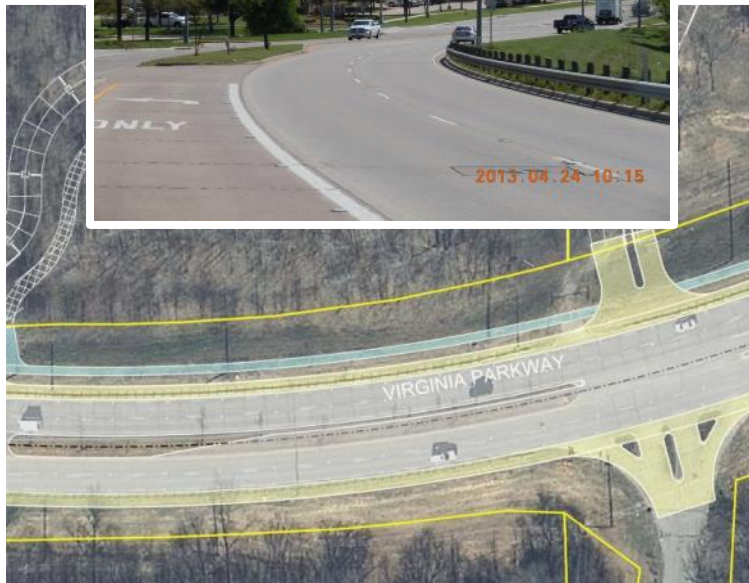
Milestone Dates

- Design Start: June 2013
- Construction Start: January 2014
- Construction End: June 2014



Virginia Parkway Lanes 5 & 6

Bellegrove to US 75 (ST1219)



Construct third lanes in each direction on Virginia Parkway, including bridge widening at Wilson Creek

Construction Budget: \$7.0 million

Third-Party Participation

- Regional Toll Revenue

Milestone Dates

- Design Start: June 2013
- Construction Start: Summer 2015
- Construction End: Summer 2016

Utility Projects

- Aerial Crossing Improvements
- CIPP Liner for 18-inch Sanitary Sewer
- Couch Drive 12" Water Line Loop
- Eldorado Parkway 20" Water Main
- **Hardin Elevated Storage Tank**
- Misc. TxDOT Utility Adjustments
- Ridge Elevated Storage Tank
(Site Acquisition)
- SCADA Controlled Transfer Valve
- Stacy Elevated Storage Tank
(Site Acquisition)
- University Pump Station – 10 MG Ground
Storage Tank
- US 75 Utility Relocations
- Virginia 12" Water Main
(Included with ST1219)

Hardin Elevated Storage Tank

Hardin Blvd & Virginia Pkwy (WA9117)



Construct a 3 MG elevated storage tank near the corner of Hardin Blvd and Virginia Pkwy

Construction Cost: \$5.2 million

Milestone Dates

- Design Start: January 2011
- Construction Start: October 2012
- Construction End: December 2013



Park Projects

- Aquatic Center Design & Phase 1 Construction
- **Bonnie Wenk Park**
- Botanical Collection
- Cambridge Hike & Bike Trail
- **Finch Park Improvements**
- Gabe Nesbitt Park Sanitary Sewer
- **Gabe Nesbitt 2-Field Baseball**
- Hardin Fencing
- Hike & Bike Trail Renovations and Improvements
- McKinney Soccer Complex Picnic Tables
- Practice Field Lighting
- Rowlett Creek Hike & Bike Trail
- **Skatepark**
- **Sonntag Neighborhood Park**
- Tom Allen Jr. Park Lighting
- Valley Creek Park Retaining Walls
- Wilson Creek Hike & Bike Trail

Bonnie Wenk Park

(PK5085)



Construct a dog park, jogging trails, restroom facility, amphitheater, and parking

Construction Cost: \$5,394,990

Milestone Dates

- Design Start: November 2010
- Construction Start: May 2012
- Construction End: May 2013
- Dog Park opened March 2013



Finch Park Improvements

Phase IV (PK1211)

Pavilion Renovation (PK3226)



Construct hike and bike trails within the park. Remove and replace a pavilion.

Construction Cost:

- Phase IV \$500,000
- Pavilion Renovation \$250,000

Milestone Dates

- Design Start: June 2011
- Construction Start: Estimated June 2013

Gabe Nesbitt 2-Field Baseball

Gabe Nesbitt Community Park (PK1210)



Construction of two lighted baseball fields

Design Build Cost: \$1,849,000

Milestone Dates

- Design Start: January 2012
- Construction Start: August 2012
- Construction End: April 2013



Skatepark

Gabe Nesbitt Community Park (PK1214)



Construction of a skatepark

Design Build Cost: \$2,000,000

Milestone Dates

- Design Start: January 2012
- Construction Start: August 2012
- Construction End: April 2013



Sonntag Neighborhood Park

(PK9140)



Sonntag Neighborhood Park 2010

Construct a neighborhood school park

Construction Cost: \$2,075,000

Milestone Dates

- Design Start: December 2008
- Construction Start: Estimated June 2013



Questions?