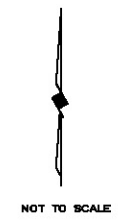
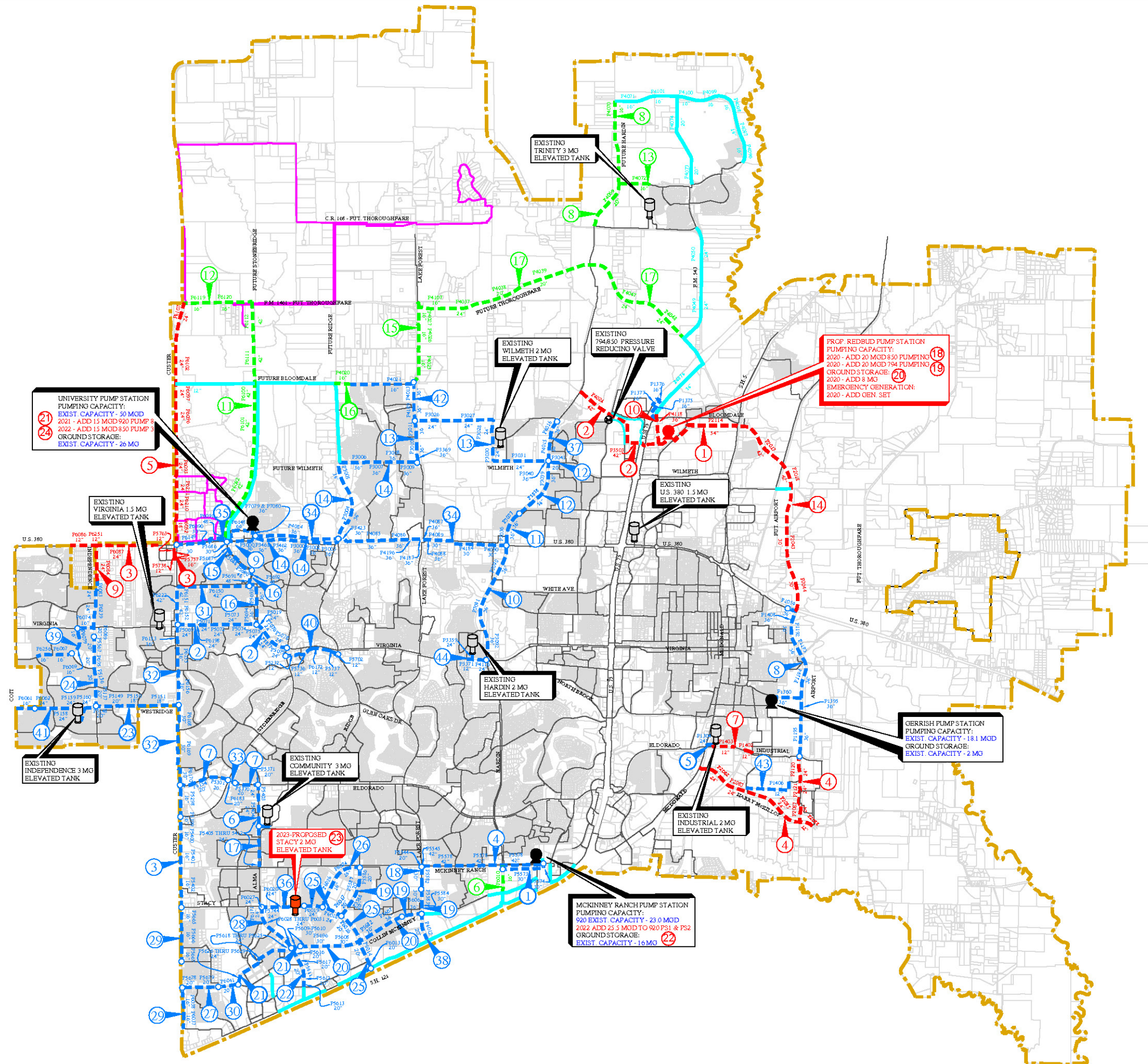


**2019 - 2029 WATER IMPACT FEE
10-YEAR CAPITAL IMPROVEMENT PLAN**

BIRKHOFF, HENDRICKS & CARTER, L.L.P.
Dallas, Texas
PROFESSIONAL ENGINEERS
NOVEMBER 2019



**EXHIBIT 1
DRAFT**



UNIVERSITY PUMP STATION
PUMPING CAPACITY:
EXIST. CAPACITY - 30 MGD
2021 - ADD 15 MGD 920 PUMP
2022 - ADD 15 MGD 850 PUMP
GROUND STORAGE:
EXIST. CAPACITY - 26 MG

EXISTING VIRGINIA 1.5 MG
ELEVATED TANK

EXISTING INDEPENDENCE 3 MG
ELEVATED TANK

2023-PROPOSED STACY 2 MG
ELEVATED TANK

EXISTING COMMUNITY 3 MG
ELEVATED TANK

MCKINNEY RANCH PUMP STATION
PUMPING CAPACITY:
920 EXIST. CAPACITY - 23.0 MGD
2022 ADD 25.5 MGD TO 920 PSI & PS2
GROUND STORAGE:
EXIST. CAPACITY - 16 MG

EXISTING HARDIN 2 MG
ELEVATED TANK

EXISTING WILMETH 2 MG
ELEVATED TANK

EXISTING 794.630 PRESSURE
REDUCING VALVE

EXISTING TRINITY 3 MG
ELEVATED TANK

PROP. REDBUD PUMP STATION
PUMPING CAPACITY:
2020 - ADD 20 MGD 850 PUMPING
2020 - ADD 20 MGD 794 PUMPING
GROUND STORAGE:
2020 - ADD 8 MG
EMERGENCY GENERATION:
2020 - ADD GEN SET

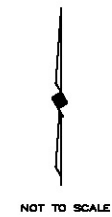
GERRISH PUMP STATION
PUMPING CAPACITY:
EXIST. CAPACITY - 18.1 MGD
GROUND STORAGE:
EXIST. CAPACITY - 2 MG

LEGEND

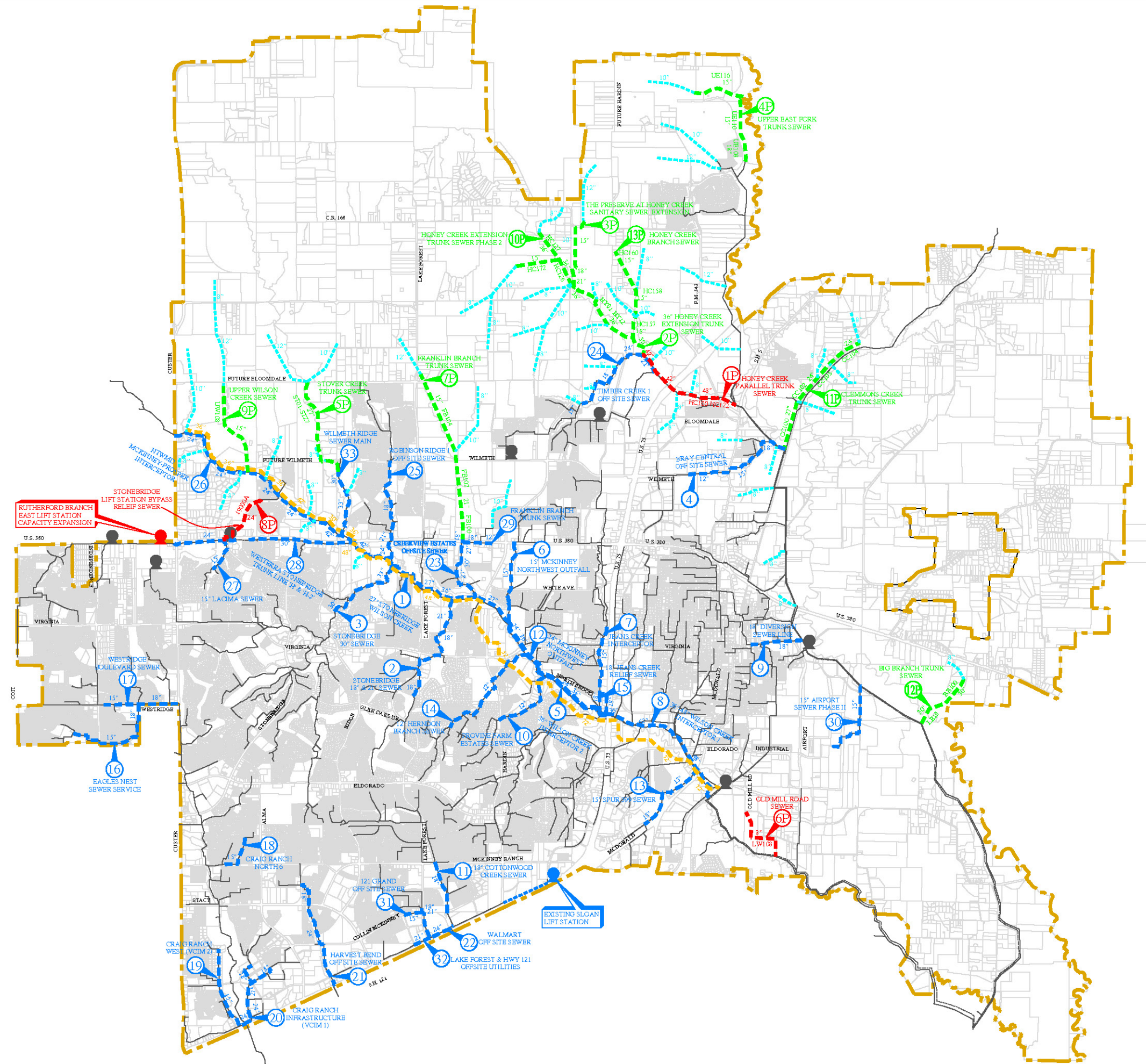
EXIST. WATER LINE	—
DANVILLE SYSTEM REMAINING IN 2029	—
EXIST. IMPACT FEE LINE	—
PROP. WATER LINE (DEVELOPER CONSTRUCTED 12-INCH UNLESS OTHERWISE NOTED)	—
PROP. IMPACT FEE WATER LINE (DEVELOPER INITIATED - CITY OVERSIZE)	—
PROPOSED IMPACT FEE WATER LINE (CITY INITIATED & CONSTRUCTED)	—
PLANNING BOUNDARY	—
EXISTING PUMP STATION	●
PROPOSED PUMP STATION	●
EXISTING ELEVATED STORAGE TANK	■
PROPOSED ELEVATED STORAGE TANK	■
EXISTING PRESSURE REDUCING VALVE	○
CIP PROJECT NUMBER	④

**2019 - 2029 WASTEWATER IMPACT FEE
10-YEAR CAPITAL IMPROVEMENT PLAN**

BIRKHOFF, HENDRICKS & CARTER, L.L.P.
PROFESSIONAL ENGINEERS
Dallas, Texas
NOVEMBER 2019



**EXHIBIT 2
DRAFT**



LEGEND

- EXIST. WASTEWATER LINE —
- EXIST. IMPACT FEE LINE - - -
- PROP. IMPACT FEE WASTEWATER LINE (DEVELOPER INITIATED - CITY OVERSIZE) - · - · -
- PROP. WASTEWATER LINE (DEVELOPER CONSTRUCTED) - · - · -
- PROP. WASTEWATER R LINE (CITY CONSTRUCTED) —
- FUTURE NTMWD WASTEWATER LINE (IN THIS 10-YEAR C.I.P.) - · - · -
- PLANNING BOUNDARY - - -
- EXIST. IMPACT FEE LIFT STATION ●
- PROP. IMPACT FEE LIFT STATION ●
- EXIST. LIFT STATION & FORCE MAIN ●
- CIP PROJECT NUMBER ①