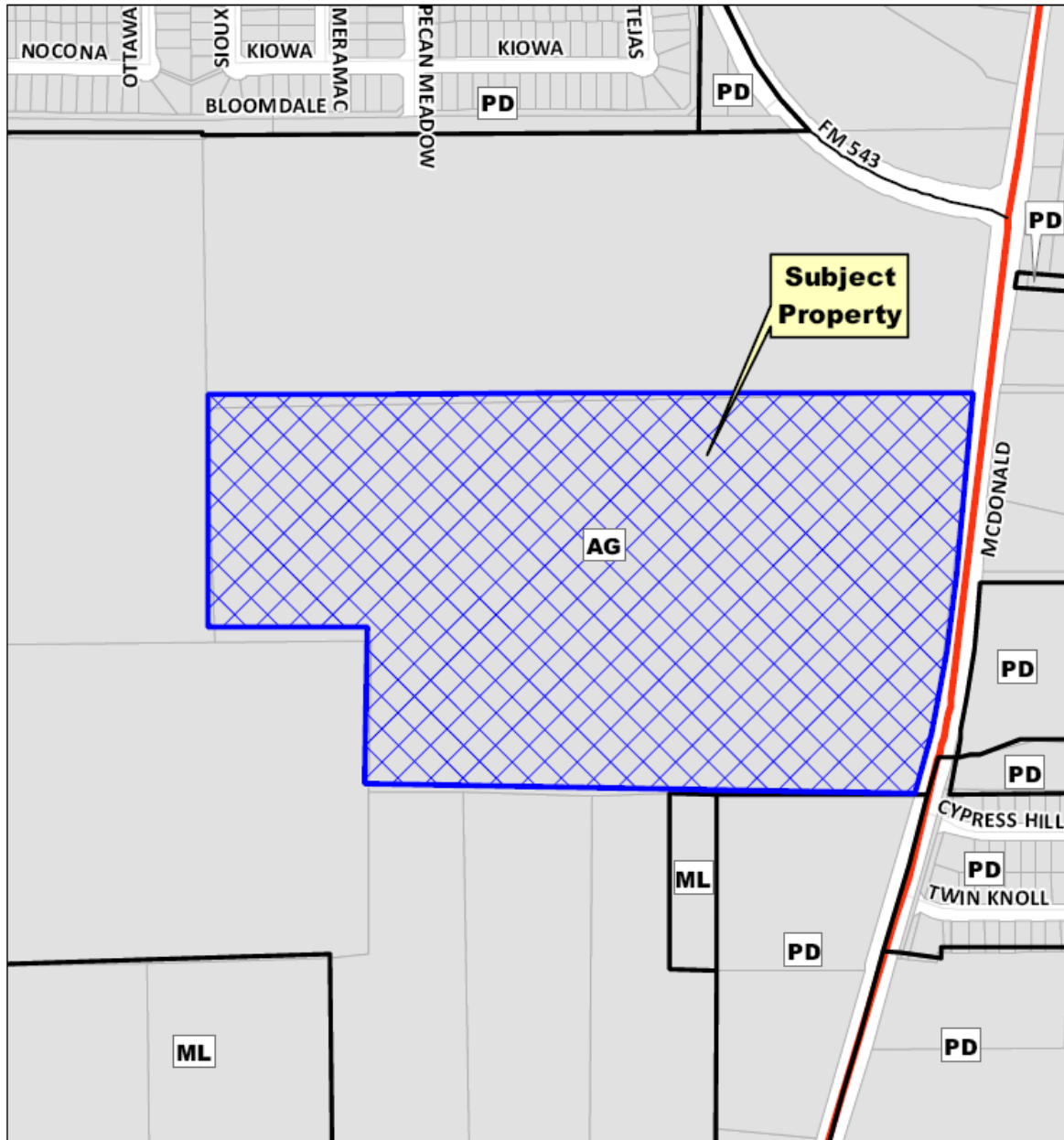


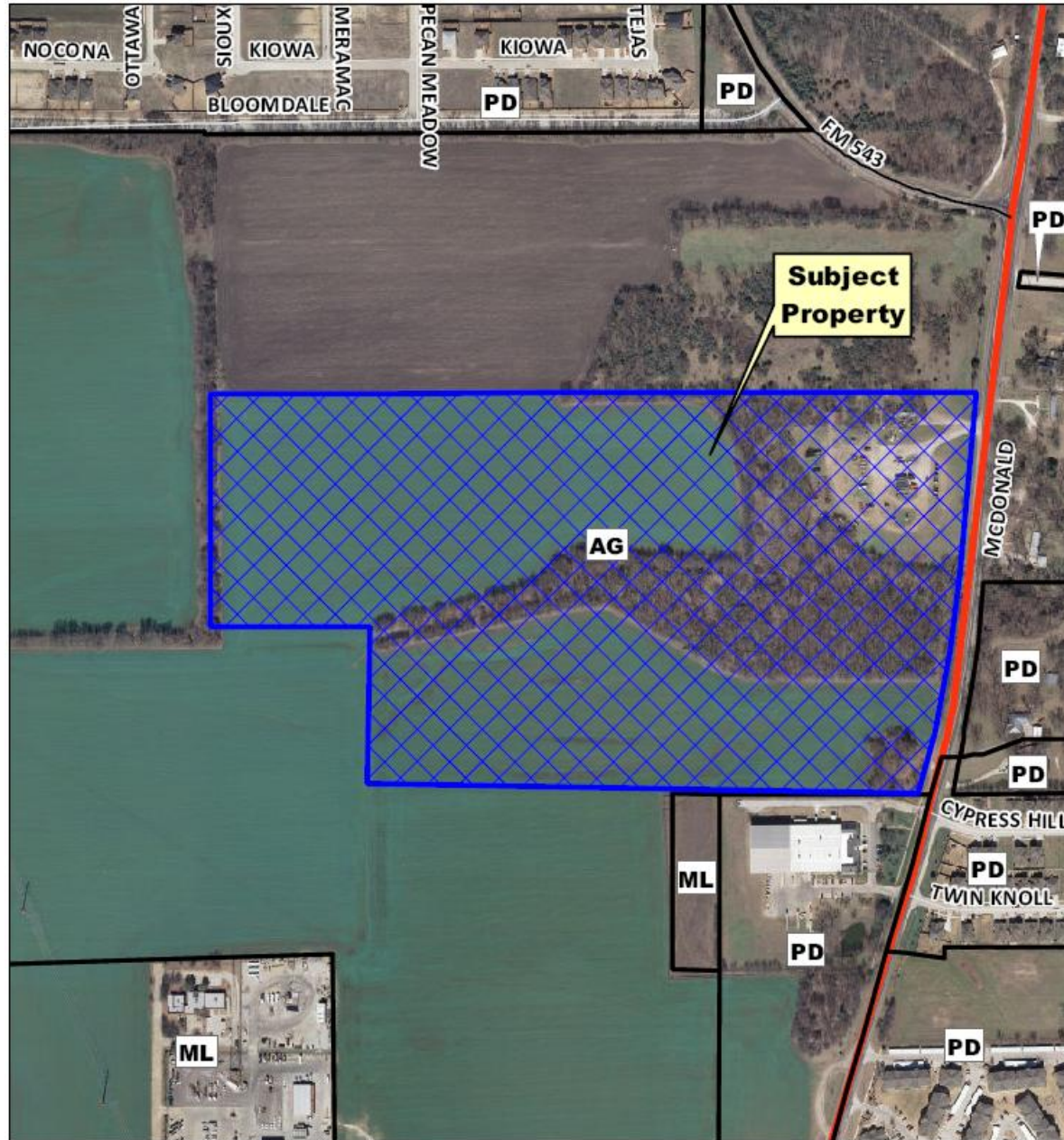
Case No. 12-093Z
Woodcreek Estates



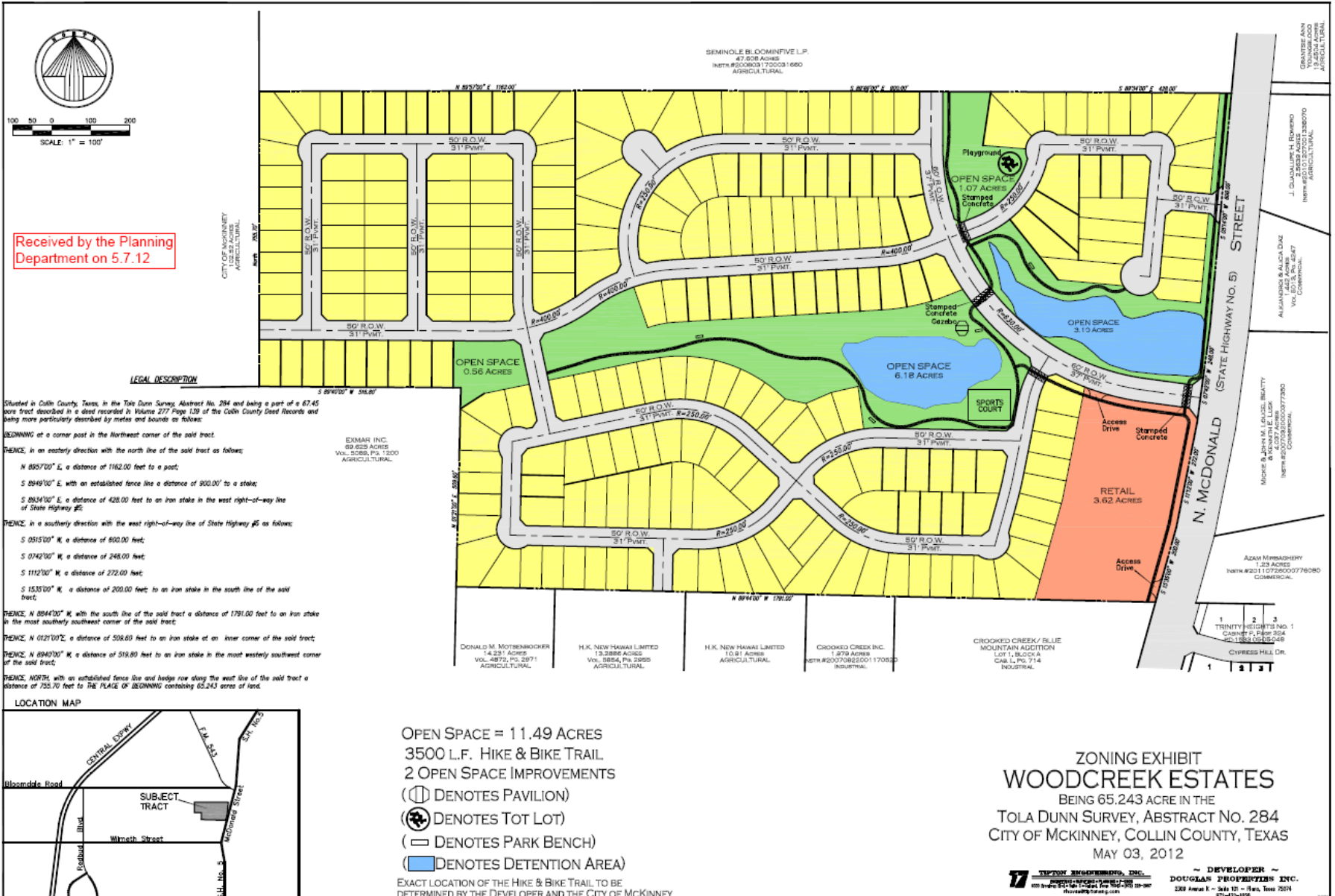
Location Map



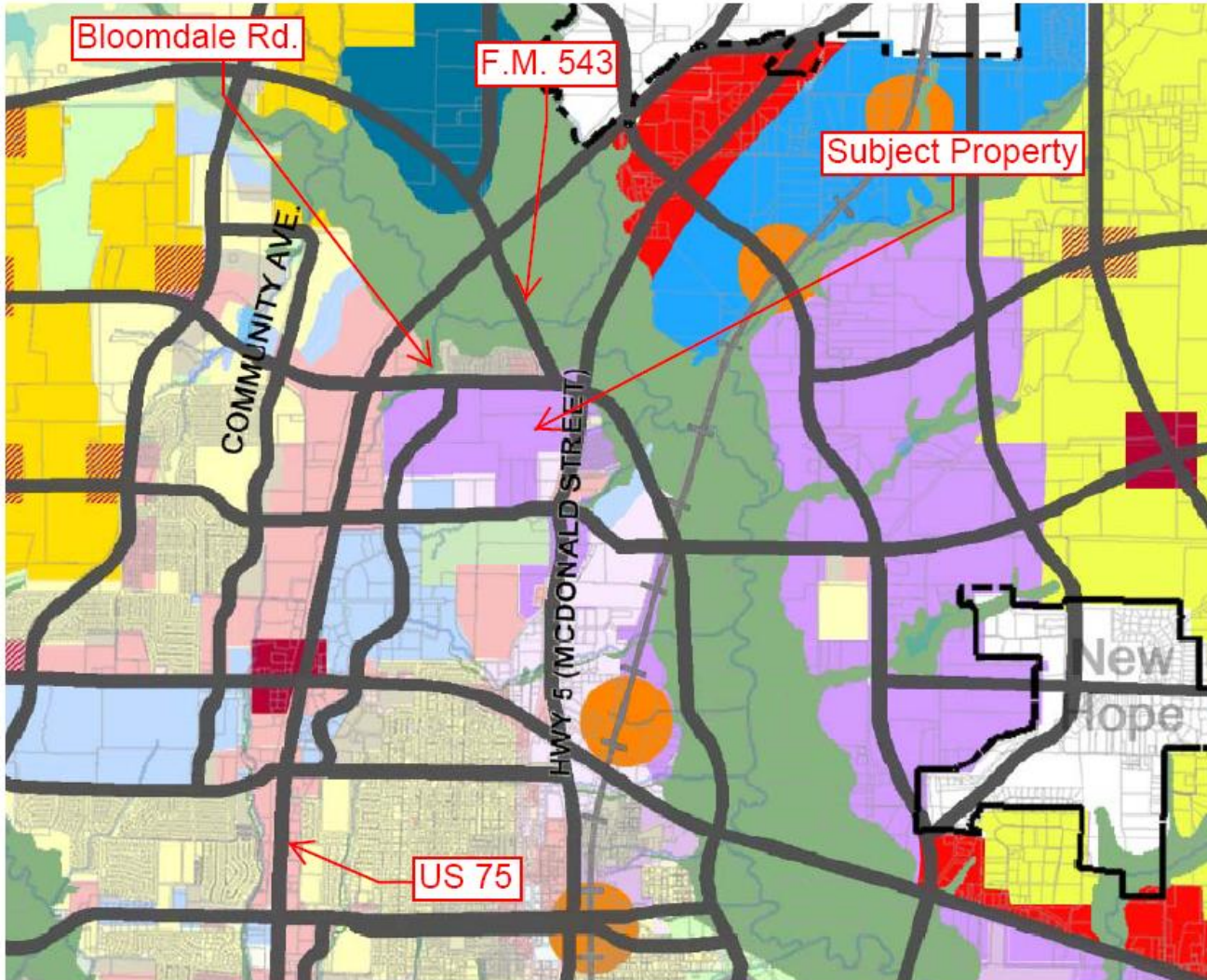
Aerial Exhibit



Proposed Zoning Exhibit



Future Land Use Plan:



- FUTURE LAND USE MODULES**
- Estate Mix
 - Suburban Mix
 - Town Center
 - Transit Village (1/4 mile radius)
 - Community Village
 - Regional Commercial
 - Regional Employment Center
 - Regional Employment
 - Office Park
 - Industrial
 - Airport Industrial
 - Potential Commercial within the Residential Module (Based on Locational Criteria)

Staff Recommendation

Staff recommends denial of the proposed rezoning request due to a lack of conformance with the Comprehensive Plan.