

**FRONT ELEVATION**

SCALE: 1/4" = 1' - 0"

**EXTERIOR FINISH SCHEDULE**

USE CHECKED BOX ONLY

01 MATERIAL/FINISH  
A COLOR

**MATERIAL/FINISH:**

- 01 EXTERIOR CEMENT PLASTER- SAND FLOAT FINISH (SEE SPECIFICATIONS)
  - INTEGRAL COLOR
  - THOROLASTIC ELASTOMERIC: #400, FINE TEXTURE
  - EXTERIOR INSULATION FINISHING SYSTEM (EIFS) AS ALTERNATE, CONTRACTOR TO SUBSTITUTE EIFS IN LIEU OF EXTERIOR CEMENT PLASTER
- 01a MODULAR THIN BRICK VENEER
- 02 DRIVE THRU CANOPY TO SPAN BETWEEN BUILDING AND SUPPORT POST
- 03 GREASE TANK / BULK OIL SYSTEM BOX
- 04 ALUMINUM STOREFRONT SYSTEM (SEE SPECS FOR MORE INFORMATION)
  - 1" CLEAR INSULATED GLASS
  - 1/4" CLEAR GLASS
  - 1" CLEAR INSULATED GLASS W/ SOLARBAN 60 COATING
  - ANTI-GRAFFITI FILM
- 05 EXTERIOR CEMENT PLASTER FINISH COAT OVER CONCRETE CURB
- 06 INTERNALLY ILLUMINATED SIGNAGE (O.F.O.I., NOT A PART OF THIS PERMIT)
- 07 WALL MOUNTED LIGHT FIXTURE
- 08 18" SLATE TILE
- 10 12" HIGH BUILDING ADDRESS LETTERS (AS REQUIRED PER LOCAL JURISDICTION)
- 11 MAIN ELECTRICAL SERVICE
- 13 HOLLOW METAL DOORS AND FRAMES, MISCELLANEOUS TRIM
- 14 GALVANIZED METAL COPING
- 15 CO2 FILL BOX METAL COVER
- 19 STEEL POST W/ CUSTOM LIGHT FIXTURE AND BANNER
- 20 DECORATIVE METAL BANDING. NOTE: ALL OUTSIDE CORNERS TO BE MITERED.
- 21 DISPLAY POSTER PANEL
- 22 WATER HEATER FLUE
- 23 ENTRANCE DISPLAY HOURS PANEL
- 24 DRIVE-THRU WINDOW TREATMENT AND DISPLAY PANEL
- 25 FEATURE WINDOW POP-OUT
- 26 PAINTED METAL ACCENT BANNER

**COLOR:**

- A ACME BRICK: "DENVER CLARET" SMOOTH
- B SHERWIN WILLIAMS: SW 6328 "FIREWEED"
- C STANDARD STOREFRONT: CLEAR ANODIZED
- D WHITE TEXT ON RED BACKGROUND
- E CLEAR ANODIZED
- F COLOR/FINISH TO MATCH ADJACENT SURFACE
- G SHERWIN WILLIAMS: SW 6990 "CAVIAR"
- H MIDNIGHT BLACK SLATE
- I SHERWIN WILLIAMS: SW 6123 "BAGUETTE"
- J RED JACK IN THE BOX LOGO FRAME SURROUNDED BY FROSTED FILM ON GLASS
- K SHERWIN WILLIAMS: SW 6120 "BELIEVABLE BUFF"
- L NATURAL CONCRETE, GRAY
- M STAINLESS STEEL
- N SHERWIN WILLIAMS: SW 2813 "DOWNING STRAW"
- O THREE CUSTOM COLOR RANDOM PATTERN. COLORS TO BE "I", "K", & "N" AS INDICATED
- P PAINT TO MATCH CLEAR ANODIZED ALUMINUM

**GENERAL NOTES:**

1. ALL SIGNAGE IS UNDER SEPARATE SUBMITTAL AND PERMIT (N.I.C.).
2. C.J. = PLASTER CONTROL JOINT
3. ALL PLASTER ACCESSORIES, FLASHINGS ETC. SHALL BE PAINTED TO MATCH ADJACENT SURFACES. (U.O.N.).
4. ALL EXTERIOR WALL OPENINGS FOR RECEPTACLES, HOSE BIBBS, ETC. SHALL BE SEALED. SEE FLOOR PLAN, GENERAL NOTES, AND SPECIFICATIONS FOR ADDITIONAL NOTES.



**JACK IN THE BOX**  
McKinney, TX

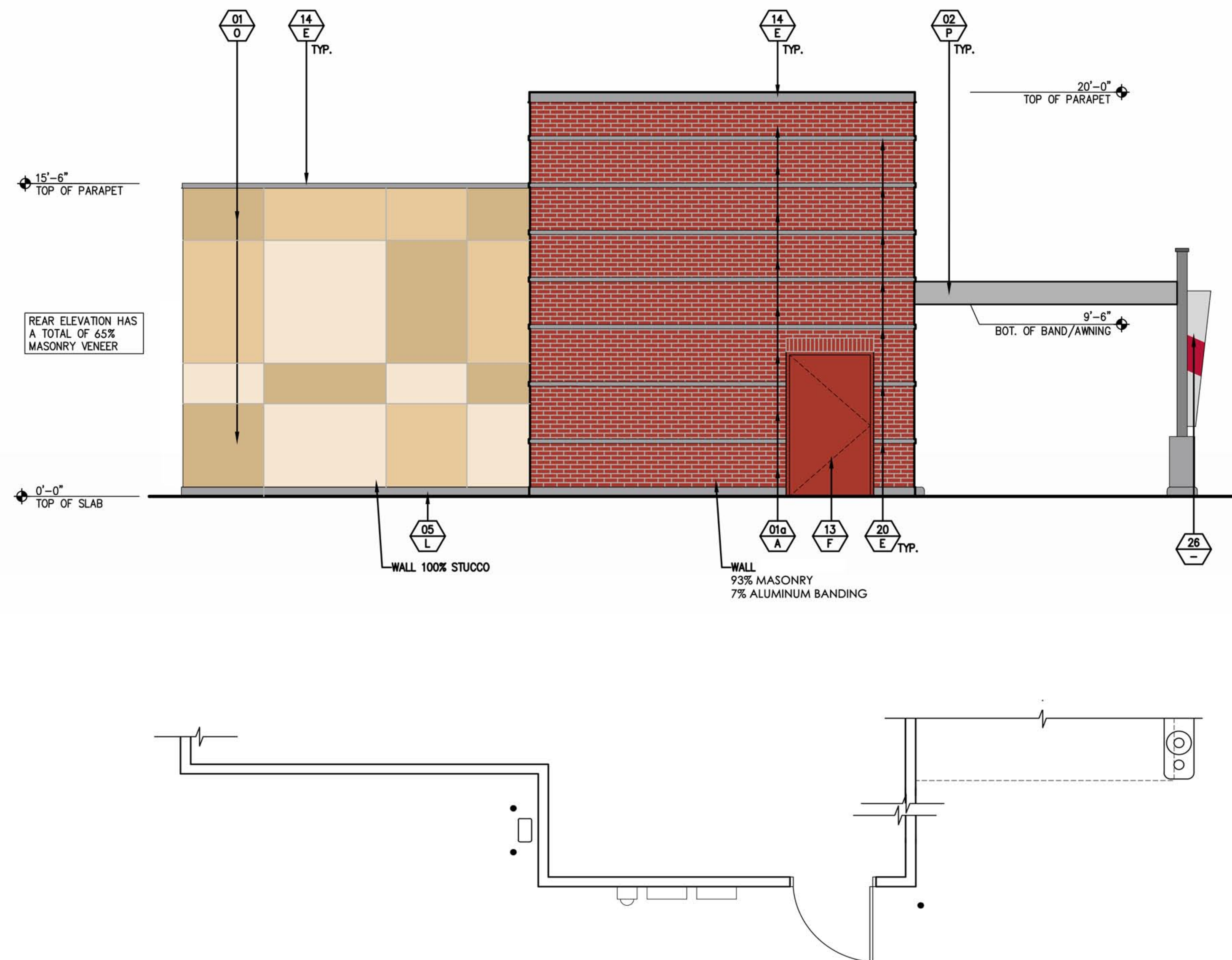
THE COLORS SHOWN IN THIS RENDERING ARE CLOSE APPROXIMATIONS. DUE TO INK VARIATIONS AND DIFFERENCES IN PRINTER, AND EXACT COLOR MATCH CANNOT BE ACHIEVED. THE VIEWER IS ADVISED TO USE THE RENDERING AS A GUIDELINE FOR THE ARRANGEMENT OF COLORS ON THE BUILDING, AND TO THEN REFER TO THE ACTUAL COLOR OR MATERIAL SAMPLES PROVIDED.



**GPD GROUP**

Glaus, Pyle, Schomer, Burns & DeHaven, Inc.

1.800.955.4731  
www.gpdgroup.com



**REAR ELEVATION**

SCALE: 1/4" = 1'-0"

**EXTERIOR FINISH SCHEDULE**

USE CHECKED BOX ONLY

01 MATERIAL/FINISH  
A COLOR

**MATERIAL/FINISH:**

- 01 EXTERIOR CEMENT PLASTER- SAND FLOAT FINISH (SEE SPECIFICATIONS)
  - INTEGRAL COLOR
  - THOROLASTIC ELASTOMERIC: #400, FINE TEXTURE
  - EXTERIOR INSULATION FINISHING SYSTEM (EIFS) AS ALTERNATE, CONTRACTOR TO SUBSTITUTE EIFS IN LIEU OF EXTERIOR CEMENT PLASTER
- 01a MODULAR THIN BRICK VENEER
- 02 DRIVE THRU CANOPY TO SPAN BETWEEN BUILDING AND SUPPORT POST
- 03 GREASE TANK / BULK OIL SYSTEM BOX
- 04 ALUMINUM STOREFRONT SYSTEM (SEE SPECS FOR MORE INFORMATION)
  - 1" CLEAR INSULATED GLASS
  - 1/4" CLEAR GLASS
  - 1" CLEAR INSULATED GLASS W/ SOLARBAN 60 COATING
  - ANTI-GRAFFITI FILM
- 05 EXTERIOR CEMENT PLASTER FINISH COAT OVER CONCRETE CURB
- 06 INTERNALLY ILLUMINATED SIGNAGE (O.F.O.I., NOT A PART OF THIS PERMIT)
- 07 WALL MOUNTED LIGHT FIXTURE
- 08 18" SLATE TILE
- 10 12" HIGH BUILDING ADDRESS LETTERS (AS REQUIRED PER LOCAL JURISDICTION)
- 11 MAIN ELECTRICAL SERVICE
- 13 HOLLOW METAL DOORS AND FRAMES, MISCELLANEOUS TRIM
- 14 GALVANIZED METAL COPING
- 15 CO2 FILL BOX METAL COVER
- 19 STEEL POST W/ CUSTOM LIGHT FIXTURE AND BANNER
- 20 DECORATIVE METAL BANDING. NOTE: ALL OUTSIDE CORNERS TO BE MITERED.
- 21 DISPLAY POSTER PANEL
- 22 WATER HEATER FLUE
- 23 ENTRANCE DISPLAY HOURS PANEL
- 24 DRIVE-THRU WINDOW TREATMENT AND DISPLAY PANEL
- 25 FEATURE WINDOW POP-OUT
- 26 PAINTED METAL ACCENT BANNER

**COLOR:**

- A ACME BRICK: "DENVER CLARET" SMOOTH
- B SHERWIN WILLIAMS: SW 6328 "FIREWEED"
- C STANDARD STOREFRONT: CLEAR ANODIZED
- D WHITE TEXT ON RED BACKGROUND
- E CLEAR ANODIZED
- F COLOR/FINISH TO MATCH ADJACENT SURFACE
- G SHERWIN WILLIAMS: SW 6990 "CAVIAR"
- H MIDNIGHT BLACK SLATE
- I SHERWIN WILLIAMS: SW 6123 "BAGUETTE"
- J RED JACK IN THE BOX LOGO FRAME SURROUNDED BY FROSTED FILM ON GLASS
- K SHERWIN WILLIAMS: SW 6120 "BELIEVABLE BUFF"
- L NATURAL CONCRETE, GRAY
- M STAINLESS STEEL
- N SHERWIN WILLIAMS: SW 2813 "DOWNING STRAW"
- O THREE CUSTOM COLOR RANDOM PATTERN. COLORS TO BE "I", "K", & "N" AS INDICATED
- P PAINT TO MATCH CLEAR ANODIZED ALUMINUM

**GENERAL NOTES:**

1. ALL SIGNAGE IS UNDER SEPARATE SUBMITTAL AND PERMIT (N.I.C.).
2. C.J. = PLASTER CONTROL JOINT
3. ALL PLASTER ACCESSORIES, FLASHINGS ETC. SHALL BE PAINTED TO MATCH ADJACENT SURFACES. (U.O.N.)
4. ALL EXTERIOR WALL OPENINGS FOR RECEPTACLES, HOSE BIBBS, ETC. SHALL BE SEALED. SEE FLOOR PLAN, GENERAL NOTES, AND SPECIFICATIONS FOR ADDITIONAL NOTES.



**JACK IN THE BOX**  
McKinney, TX

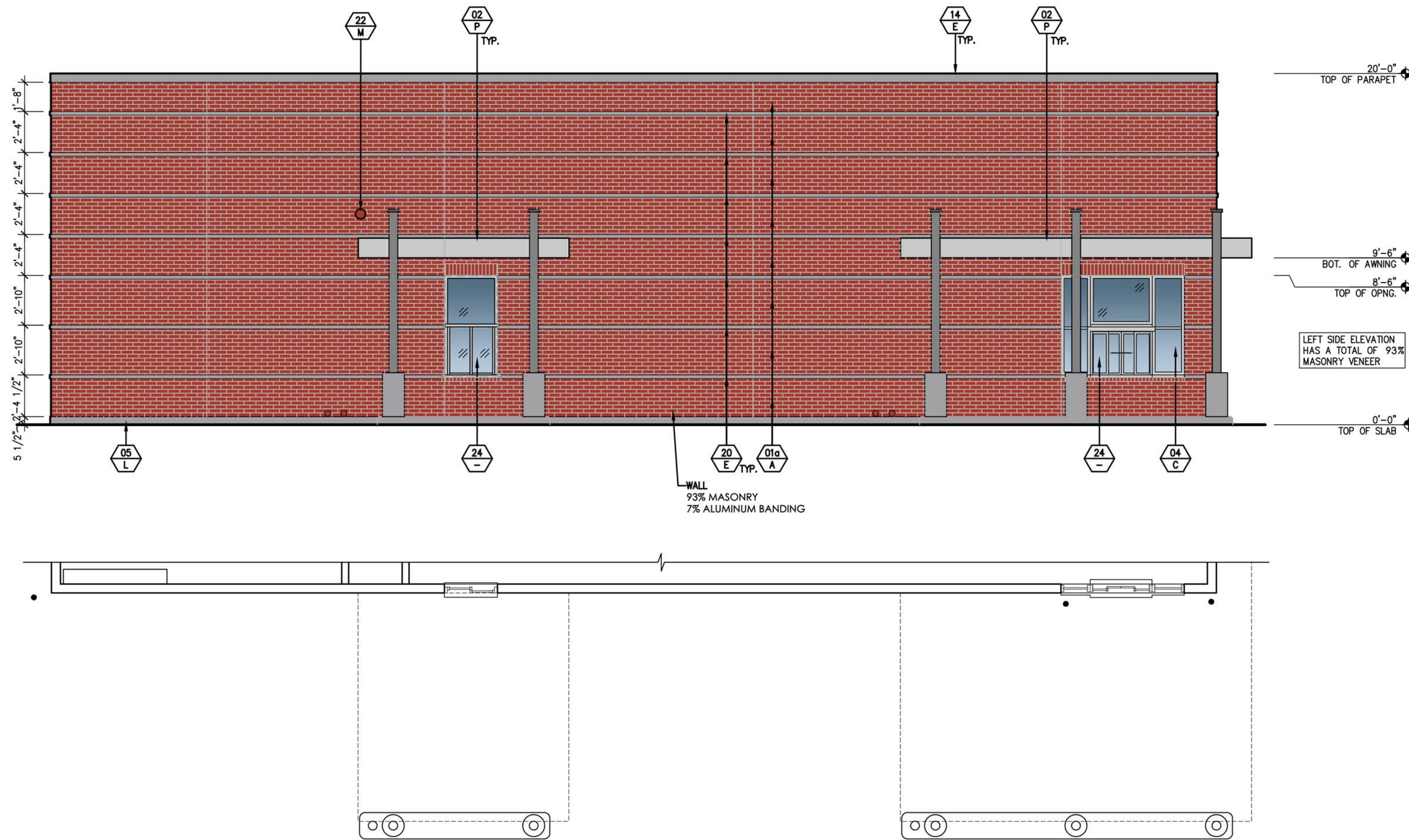
THE COLORS SHOWN IN THIS RENDERING ARE CLOSE APPROXIMATIONS. DUE TO INK VARIATIONS AND DIFFERENCES IN PRINTER, AND EXACT COLOR MATCH CANNOT BE ACHIEVED. THE VIEWER IS ADVISED TO USE THE RENDERING AS A GUIDELINE FOR THE ARRANGEMENT OF COLORS ON THE BUILDING, AND TO THEN REFER TO THE ACTUAL COLOR OR MATERIAL SAMPLES PROVIDED.



**GPD GROUP**

Glaus, Pyle, Schomer, Burns & DeHaven, Inc.

1.800.955.4731  
www.gpdgroup.com



**LEFT ELEVATION**

SCALE: 1/4" = 1' - 0"

**EXTERIOR FINISH SCHEDULE**

USE CHECKED BOX ONLY

01 — MATERIAL/FINISH  
A — COLOR

**MATERIAL/FINISH:**

- 01 EXTERIOR CEMENT PLASTER- SAND FLOAT FINISH (SEE SPECIFICATIONS)
  - INTEGRAL COLOR
  - THOROLASTIC ELASTOMERIC: #400, FINE TEXTURE
  - EXTERIOR INSULATION FINISHING SYSTEM (EIFS) AS ALTERNATE, CONTRACTOR TO SUBSTITUTE EIFS IN LIEU OF EXTERIOR CEMENT PLASTER
- 01a MODULAR THIN BRICK VENEER
- 02 DRIVE THRU CANOPY TO SPAN BETWEEN BUILDING AND SUPPORT POST
- 03 GREASE TANK / BULK OIL SYSTEM BOX
- 04 ALUMINUM STOREFRONT SYSTEM (SEE SPECS FOR MORE INFORMATION)
  - 1" CLEAR INSULATED GLASS
  - 1" CLEAR INSULATED GLASS W/ SOLARBAN 60 COATING
  - 1/4" CLEAR GLASS
  - ANTI-GRAFFITI FILM
- 05 EXTERIOR CEMENT PLASTER FINISH COAT OVER CONCRETE CURB
- 06 INTERNALLY ILLUMINATED SIGNAGE (O.F.O.I., NOT A PART OF THIS PERMIT)
- 07 WALL MOUNTED LIGHT FIXTURE
- 08 18" SLATE TILE
- 10 12" HIGH BUILDING ADDRESS LETTERS (AS REQUIRED PER LOCAL JURISDICTION)
- 11 MAIN ELECTRICAL SERVICE
- 13 HOLLOW METAL DOORS AND FRAMES, MISCELLANEOUS TRIM
- 14 GALVANIZED METAL COPING
- 15 CO2 FILL BOX METAL COVER
- 19 STEEL POST W/ CUSTOM LIGHT FIXTURE AND BANNER
- 20 DECORATIVE METAL BANDING. NOTE: ALL OUTSIDE CORNERS TO BE MITERED.
- 21 DISPLAY POSTER PANEL
- 22 WATER HEATER FLUE
- 23 ENTRANCE DISPLAY HOURS PANEL
- 24 DRIVE-THRU WINDOW TREATMENT AND DISPLAY PANEL
- 25 FEATURE WINDOW POP-OUT
- 26 PAINTED METAL ACCENT BANNER

**COLOR:**

- A ACME BRICK: "DENVER CLARET" SMOOTH
- B SHERWIN WILLIAMS: SW 6328 "FIREWEED"
- C STANDARD STOREFRONT: CLEAR ANODIZED
- D WHITE TEXT ON RED BACKGROUND
- E CLEAR ANODIZED
- F COLOR/FINISH TO MATCH ADJACENT SURFACE
- G SHERWIN WILLIAMS: SW 6990 "CAVIAR"
- H MIDNIGHT BLACK SLATE
- I SHERWIN WILLIAMS: SW 6123 "BAGUETTE"
- J RED JACK IN THE BOX LOGO FRAME SURROUNDED BY FROSTED FILM ON GLASS
- K SHERWIN WILLIAMS: SW 6120 "BELIEVABLE BUFF"
- L NATURAL CONCRETE, GRAY
- M STAINLESS STEEL
- N SHERWIN WILLIAMS: SW 2813 "DOWNING STRAW"
- O THREE CUSTOM COLOR RANDOM PATTERN. COLORS TO BE "I", "K", & "N" AS INDICATED
- P PAINT TO MATCH CLEAR ANODIZED ALUMINUM

**GENERAL NOTES:**

1. ALL SIGNAGE IS UNDER SEPARATE SUBMITTAL AND PERMIT (N.I.C.).
2. C.J. = PLASTER CONTROL JOINT
3. ALL PLASTER ACCESSORIES, FLASHINGS ETC. SHALL BE PAINTED TO MATCH ADJACENT SURFACES. (U.O.N.).
4. ALL EXTERIOR WALL OPENINGS FOR RECEPTACLES, HOSE BIBBS, ETC. SHALL BE SEALED. SEE FLOOR PLAN, GENERAL NOTES, AND SPECIFICATIONS FOR ADDITIONAL NOTES.



**JACK IN THE BOX**  
McKinney, TX

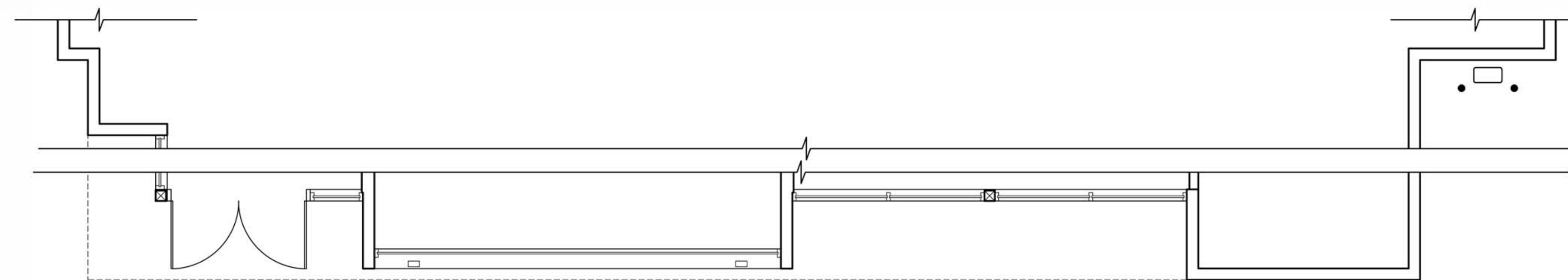
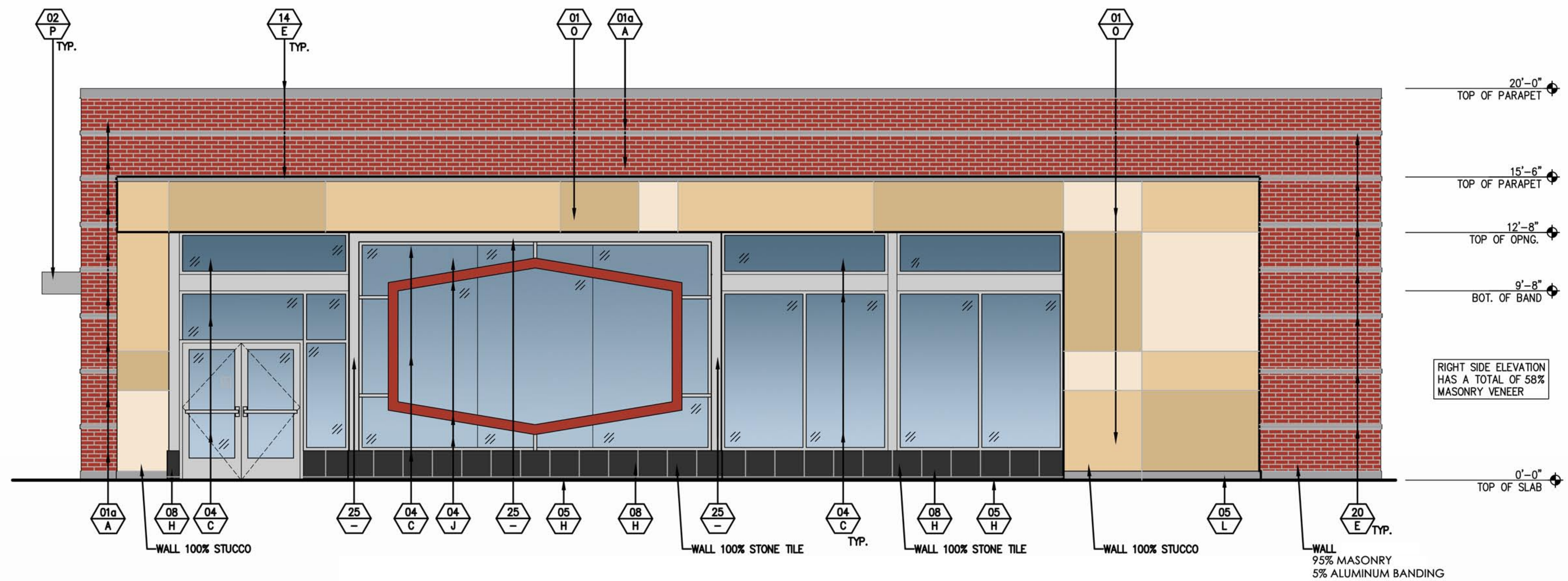
THE COLORS SHOWN IN THIS RENDERING ARE CLOSE APPROXIMATIONS. DUE TO INK VARIATIONS AND DIFFERENCES IN PRINTER, AND EXACT COLOR MATCH CANNOT BE ACHIEVED. THE VIEWER IS ADVISED TO USE THE RENDERING AS A GUIDELINE FOR THE ARRANGEMENT OF COLORS ON THE BUILDING, AND TO THEN REFER TO THE ACTUAL COLOR OR MATERIAL SAMPLES PROVIDED.



**GPD GROUP**

Glaus, Pyle, Schomer, Burns & DeHaven, Inc.

1.800.955.4731  
www.gpdgroup.com



**RIGHT ELEVATION**

SCALE: 1/4" = 1'-0"

**EXTERIOR FINISH SCHEDULE**

USE CHECKED BOX ONLY

01 MATERIAL/FINISH  
A COLOR

**MATERIAL/FINISH:**

- 01 EXTERIOR CEMENT PLASTER- SAND FLOAT FINISH (SEE SPECIFICATIONS)
  - INTEGRAL COLOR
  - THOROLASTIC ELASTOMERIC: #400, FINE TEXTURE
  - EXTERIOR INSULATION FINISHING SYSTEM (EIFS) AS ALTERNATE, CONTRACTOR TO SUBSTITUTE EIFS IN LIEU OF EXTERIOR CEMENT PLASTER
- 01a MODULAR THIN BRICK VENEER
- 02 DRIVE THRU CANOPY TO SPAN BETWEEN BUILDING AND SUPPORT POST
- 03 GREASE TANK / BULK OIL SYSTEM BOX
- 04 ALUMINUM STOREFRONT SYSTEM (SEE SPECS FOR MORE INFORMATION)
  - 1" CLEAR INSULATED GLASS
  - 1/4" CLEAR GLASS
  - 1" CLEAR INSULATED GLASS W/ SOLARBAN 60 COATING
  - ANTI-GRAFFITI FILM
- 05 EXTERIOR CEMENT PLASTER FINISH COAT OVER CONCRETE CURB
- 06 INTERNALLY ILLUMINATED SIGNAGE (O.F.O.I., NOT A PART OF THIS PERMIT)
- 07 WALL MOUNTED LIGHT FIXTURE
- 08 18" SLATE TILE
- 10 12" HIGH BUILDING ADDRESS LETTERS (AS REQUIRED PER LOCAL JURISDICTION)
- 11 MAIN ELECTRICAL SERVICE
- 13 HOLLOW METAL DOORS AND FRAMES, MISCELLANEOUS TRIM
- 14 GALVANIZED METAL COPING
- 15 CO2 FILL BOX METAL COVER
- 19 STEEL POST W/ CUSTOM LIGHT FIXTURE AND BANNER
- 20 DECORATIVE METAL BANDING. NOTE: ALL OUTSIDE CORNERS TO BE MITERED.
- 21 DISPLAY POSTER PANEL
- 22 WATER HEATER FLUE
- 23 ENTRANCE DISPLAY HOURS PANEL
- 24 DRIVE-THRU WINDOW TREATMENT AND DISPLAY PANEL
- 25 FEATURE WINDOW POP-OUT
- 26 PAINTED METAL ACCENT BANNER

**COLOR:**

- A ACME BRICK: "DENVER CLARET" SMOOTH
- B SHERWIN WILLIAMS: SW 6328 "FIREWEED"
- C STANDARD STOREFRONT: CLEAR ANODIZED
- D WHITE TEXT ON RED BACKGROUND
- E CLEAR ANODIZED
- F COLOR/FINISH TO MATCH ADJACENT SURFACE
- G SHERWIN WILLIAMS: SW 6990 "CAVIAR"
- H MIDNIGHT BLACK SLATE
- I SHERWIN WILLIAMS: SW 6123 "BAGUETTE"
- J RED JACK IN THE BOX LOGO FRAME SURROUNDED BY FROSTED FILM ON GLASS
- K SHERWIN WILLIAMS: SW 6120 "BELIEVABLE BUFF"
- L NATURAL CONCRETE, GRAY
- M STAINLESS STEEL
- N SHERWIN WILLIAMS: SW 2813 "DOWNING STRAW"
- O THREE CUSTOM COLOR RANDOM PATTERN. COLORS TO BE "I", "K", & "N" AS INDICATED
- P PAINT TO MATCH CLEAR ANODIZED ALUMINUM

**GENERAL NOTES:**

1. ALL SIGNAGE IS UNDER SEPARATE SUBMITTAL AND PERMIT (N.I.C.).
2. C.J. = PLASTER CONTROL JOINT
3. ALL PLASTER ACCESSORIES, FLASHINGS ETC. SHALL BE PAINTED TO MATCH ADJACENT SURFACES. (U.O.N.).
4. ALL EXTERIOR WALL OPENINGS FOR RECEPTACLES, HOSE BIBBS, ETC. SHALL BE SEALED. SEE FLOOR PLAN, GENERAL NOTES, AND SPECIFICATIONS FOR ADDITIONAL NOTES.



**JACK IN THE BOX**  
McKinney, TX

THE COLORS SHOWN IN THIS RENDERING ARE CLOSE APPROXIMATIONS. DUE TO INK VARIATIONS AND DIFFERENCES IN PRINTER, AND EXACT COLOR MATCH CANNOT BE ACHIEVED. THE VIEWER IS ADVISED TO USE THE RENDERING AS A GUIDELINE FOR THE ARRANGEMENT OF COLORS ON THE BUILDING, AND TO THEN REFER TO THE ACTUAL COLOR OR MATERIAL SAMPLES PROVIDED.



**GPD GROUP**

Glaus, Pyle, Schomer, Burns & DeHaven, Inc.

1.800.955.4731  
www.gpdgroup.com