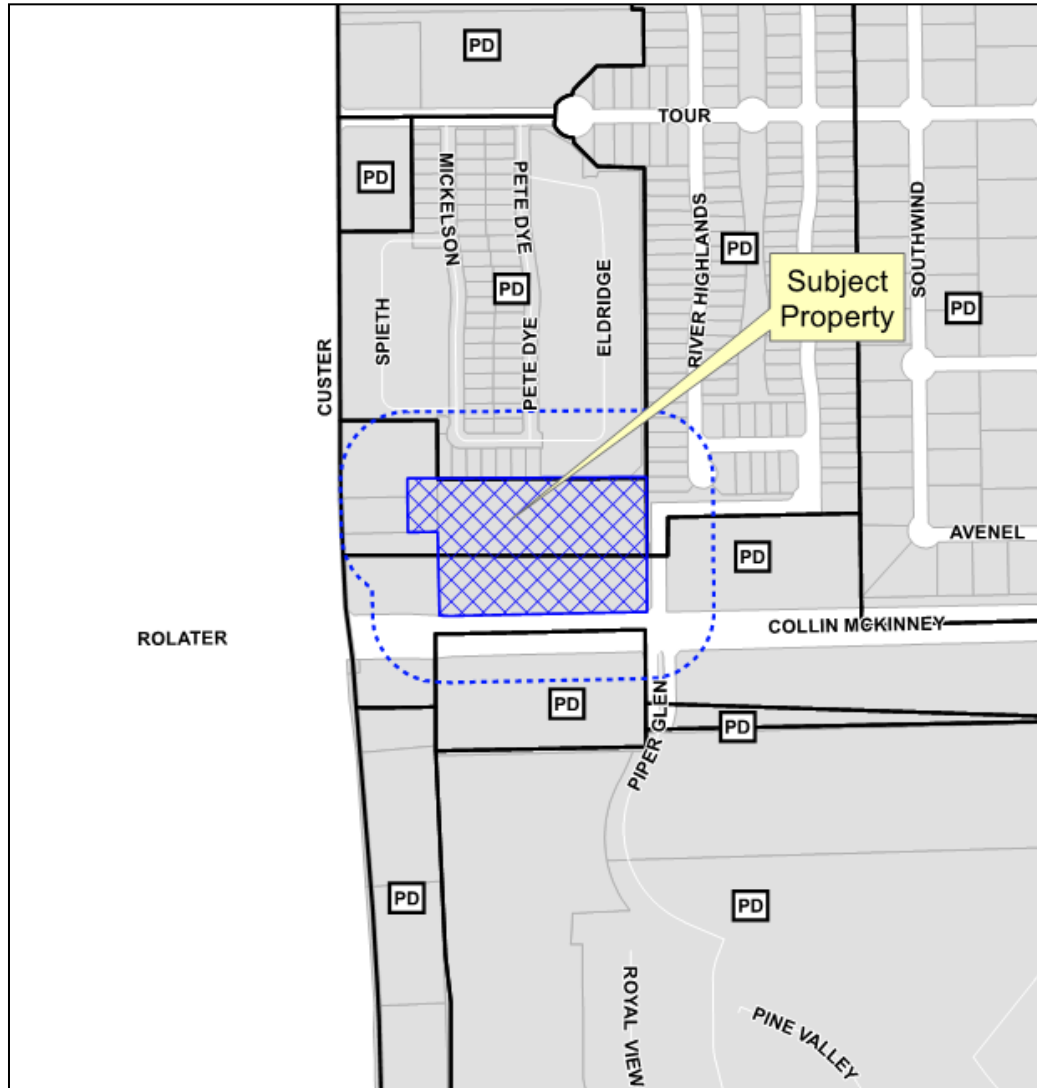


Luxury Seniors
at Craig Ranch
Site Plan
15-215SP

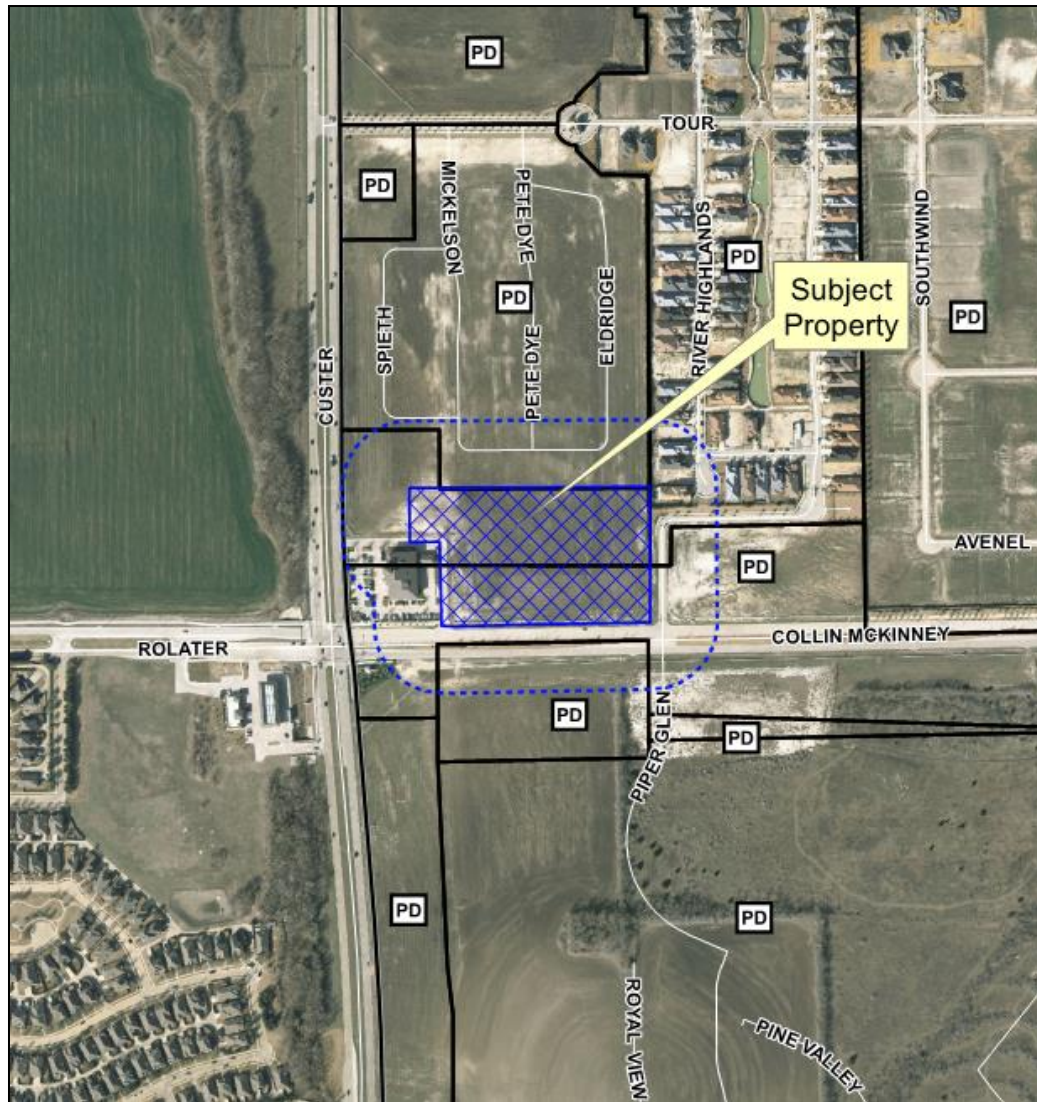


- MONEY MAGAZINE 2014 -

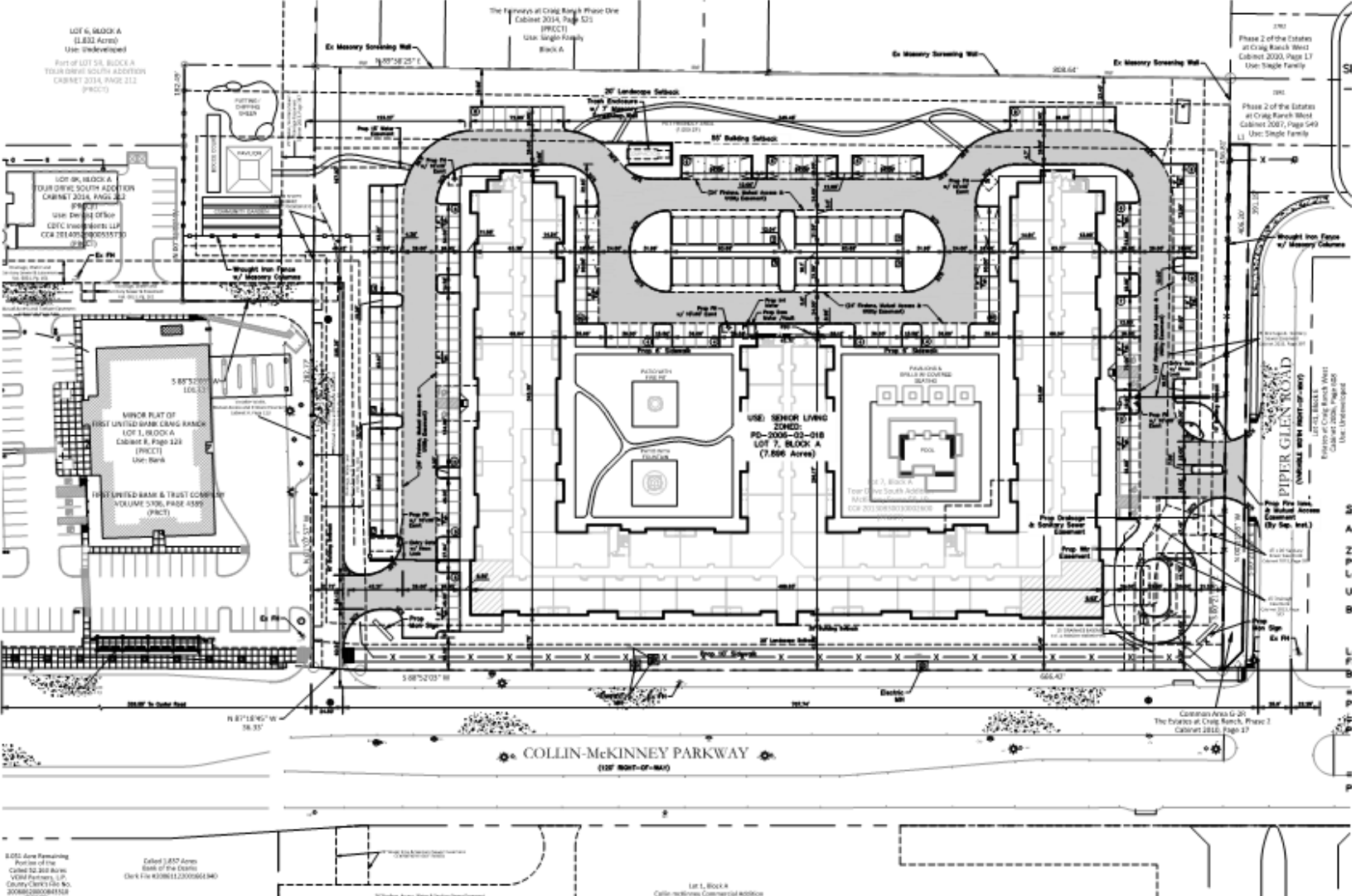
Location Map



Aerial Exhibit



Proposed Site Plan



The Parcels at Craig Ranch Phase One
Cabinet 2014, Page 523
(PRACT)
Use: Single-Family
Block A

LOT 6, BLOCK A
(1.833 Acres)
Use: Undeveloped
Part of LOT 5B, BLOCK A
TOUR DEPOT SOUTH ADDITION
CABINET 2014, PAGE 212
(PRACT)

Phase 2 of the Estates
at Craig Ranch West
Cabinet 2007, Page L7
Use: Single Family

Phase 2 of the Estates
at Craig Ranch West
Cabinet 2007, Page L49
Use: Single Family

LOT 8K, BLOCK A
FOUR DRIVE SOUTH ADDITION
CABINET 2014, PAGE 212
(PRACT)
USE: Detached Office
C2EC 1998/2018/1 LLP
CCA 2014/01/08/2015/17/0
(PRACT)

MINOR PLAT OF
FIRST UNITED BANK BANG BANG
LOT 1, BLOCK A
CABINET #, Page 128
(PRACT)
Use: Bank

11-01 UNITED BANK & TRUST COMPANY
VOLUME 5706, PAGE 4590
(PRACT)

USE: SEVEN LIVING
ZONED:
PD-2006-02-018
LOT 7, BLOCK A
(7.866 Acres)
FROM THE SOUTH ADDITION
CABINET 2006, PAGE 128
(PRACT)

PIPPIN GLEN ROAD
CABINET 2006, PAGE 128
(PRACT)
Use: Undeveloped

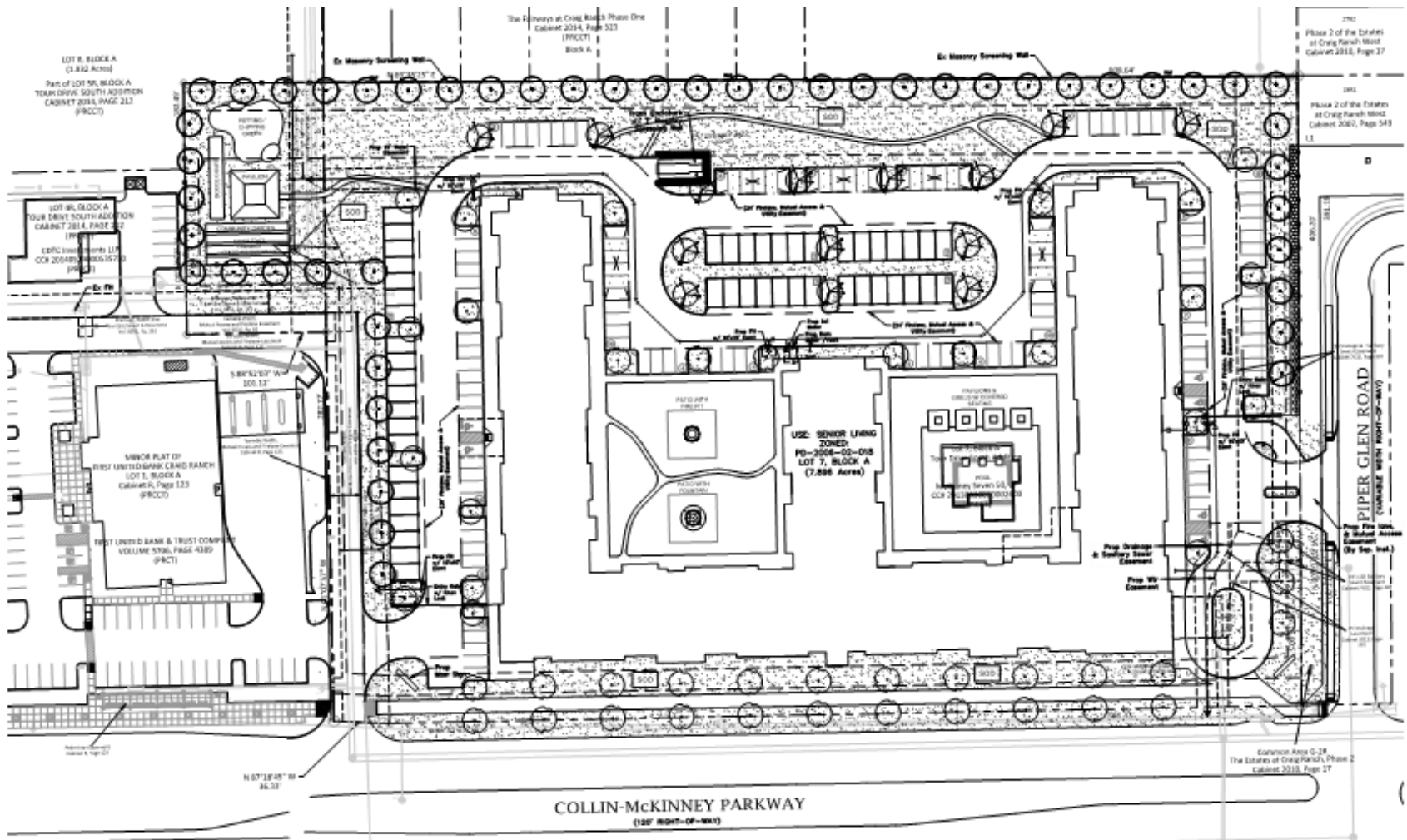
COLLIN-MCKINNEY PARKWAY
(120' RIGHT-OF-WAY)

8,032 Area Remaining
Portion of the
Called 32,349 Area
VOTED PARTNERS, L.P.
COUNTY CLERK'S OFFICE NO.
200880200804518
2007/07/11

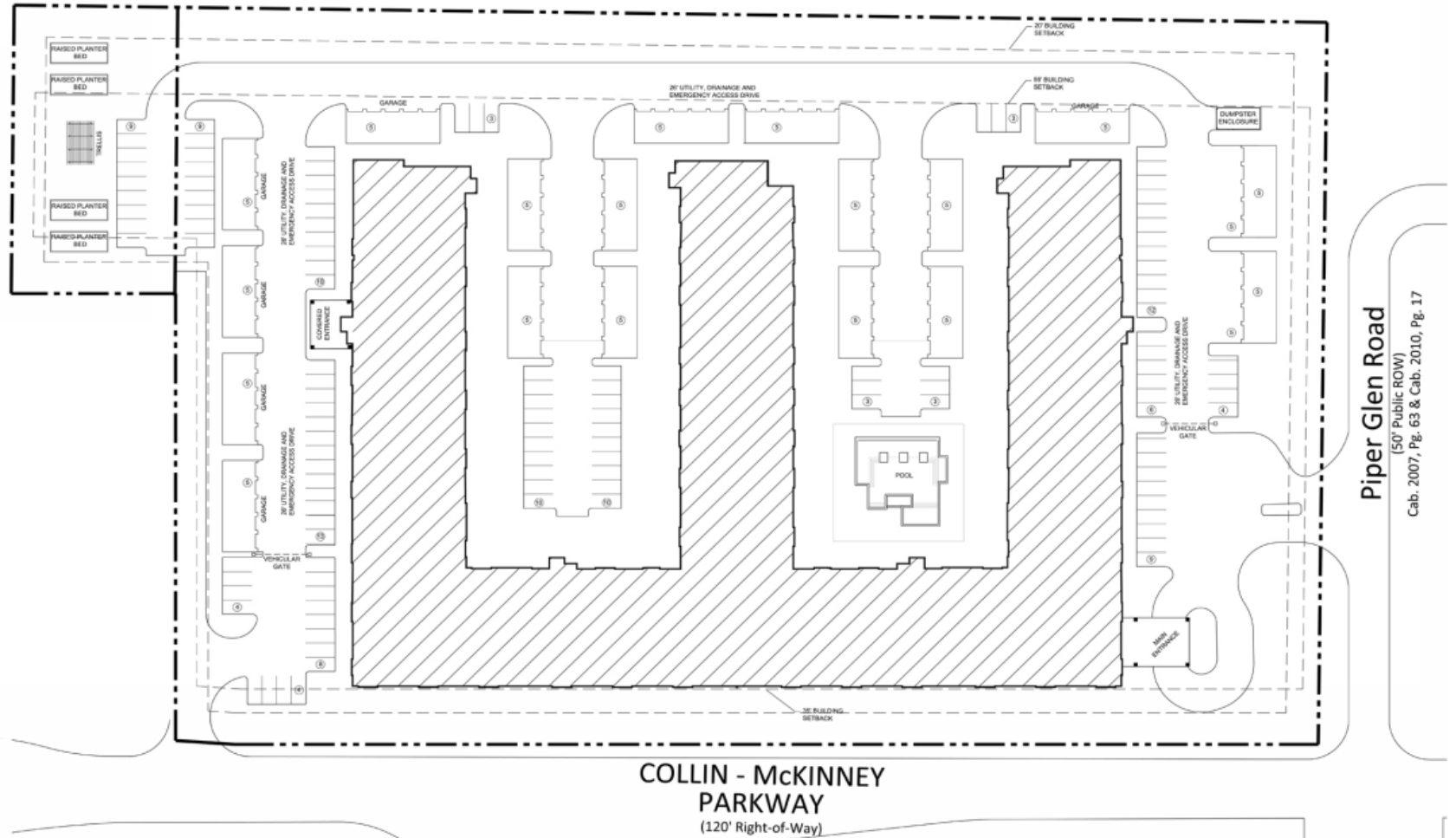
Called 3,857 Area
East of the District
Clark File #07986112008056140

LOT 1, BLOCK A
Callie McKeen Commercial Addition

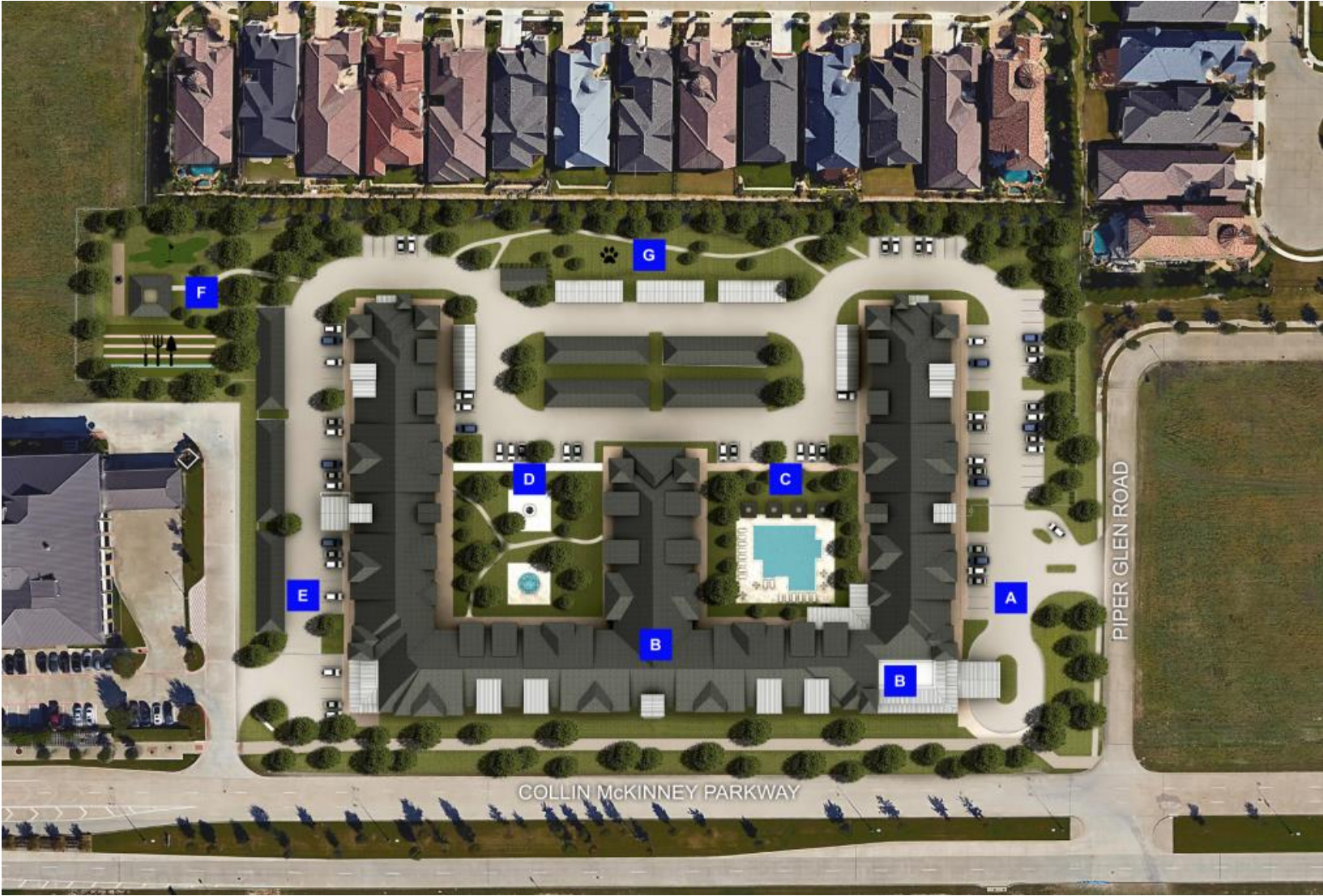
Proposed Landscape Plan



Alternate Site Plan Informational Only



Rendered Site Plan Informational Only



Building Elevations Informational Only



01 COLLIN MCKINNEY PARKWAY - FRONT ELEVATION (SOUTH)
N.T.S.

INNOVATIVE and EXCEPTIONAL Building Design & Amenities

- Community-Friendly "W" Building Shape
- Highest Quality Building Materials
- 50% Masonry Utilizing Brick and Stone
- Arched Covered Patios and Walkways
- Metal Roofing & Timber Accents
- Condo Grade Interior Finishes
- Energy-Efficient Kitchen Appliances
- Energy-Efficient Light Fixtures
- Premium Landscape and Buffering Plan



02 PIPER GLEN ROAD - SIDE ELEVATION (EAST)
N.T.S.



03 REAR ELEVATION (NORTH)
N.T.S.

3D Rendering Informational Only



3D Rendering Informational Only

