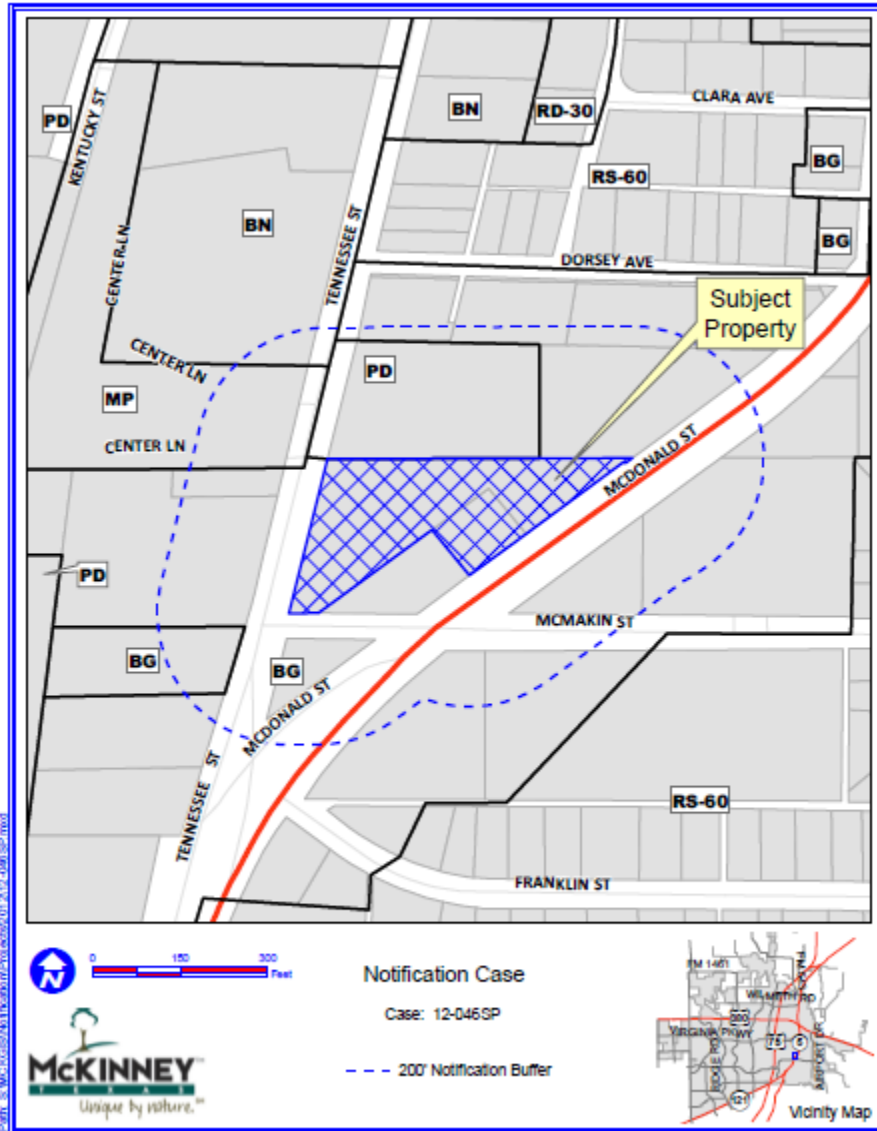


Case No. 12-046SP

Consider/Discuss/Act on the Request by E.A.G., on Behalf of First Choice Auto, for Approval of a Site Plan for First Choice Auto, Approximately 1.84 Acres, Located on the West Side of McDonald Street and Approximately 150 Feet North of McMakin Street.

Location Map

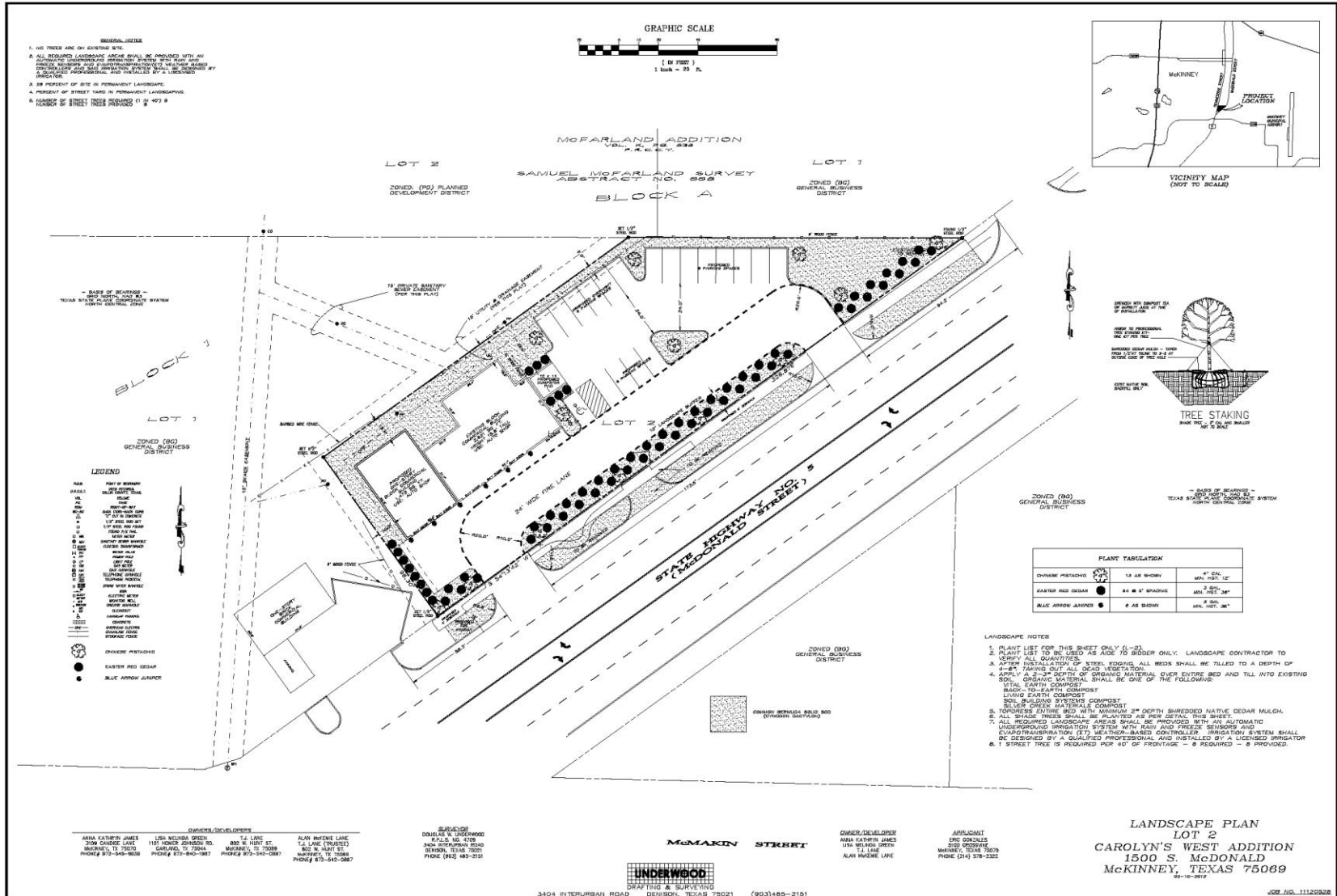


Street View of the Existing Site



Copyright ©2011 Pictometry International Corp.

Proposed Landscape Plan



Staff Recommendation

- Staff recommends approval of the plan as outlined in the Staff Report