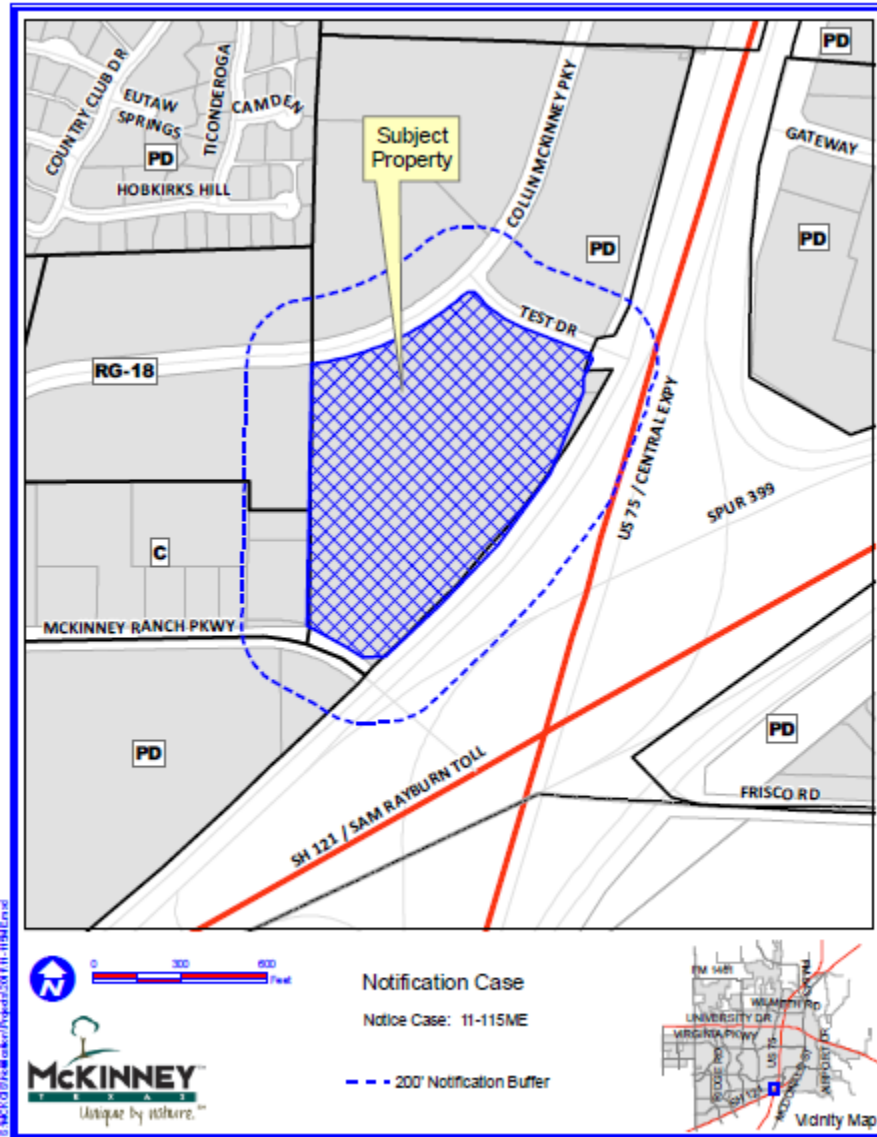


# Case No. 11-115ME

Conduct a Public Hearing to Consider/Discuss/Act on the Request by Carlos Fernandez Architects, on Behalf of Courtesy Dealership Property, for Approval of a Meritorious Exception for McKinney Buick GMC, Approximately 18.26 Acres, Located on the Southwest Corner of Collin McKinney Parkway and Test Drive, and West of U.S. Highway 75 (Central Expressway).



# Location Map



1:50,000 Scale  
MapSource 2011-11-11 11:11 AM

DISCLAIMER: This map and information contained in it were developed exclusively for use by the City of McKinney. Any use or reliance on this map by anyone else is at that party's risk and without liability to the City of McKinney, its officials or employees for any discrepancies, errors, or omissions which may exist.

# Aerial Exhibit

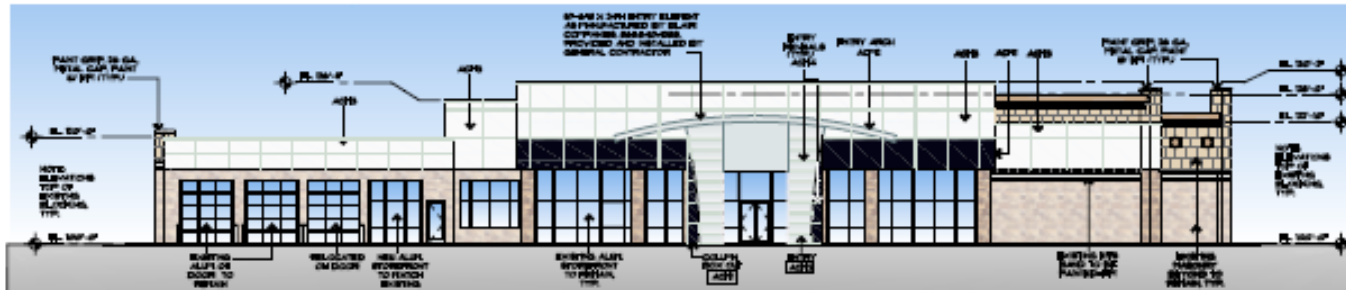


© 2010 City of McKinney, Texas. All Rights Reserved.

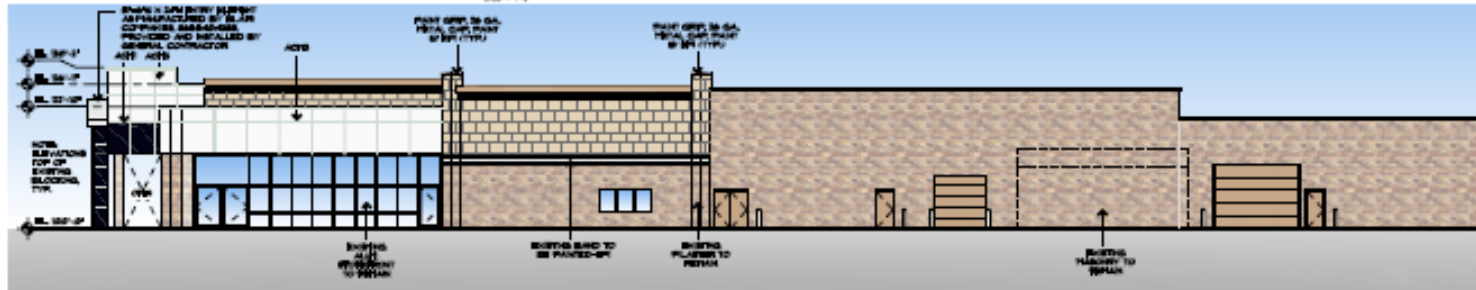
DISCLAIMER: This map and information contained in it were developed exclusively for use by the City of McKinney. Any use or reliance on this map by anyone else is at that party's risk and without liability to the City of McKinney, its officials or employees for any discrepancies, errors, or omissions which may exist.



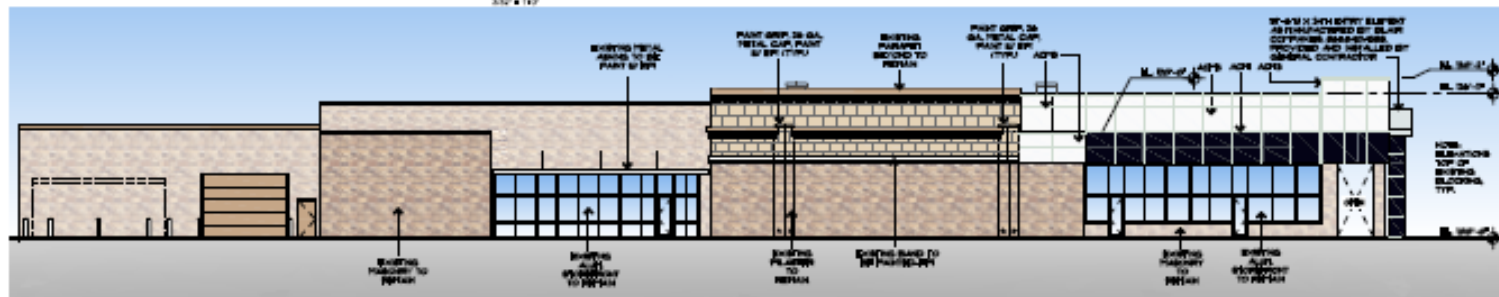
# Proposed Elevations



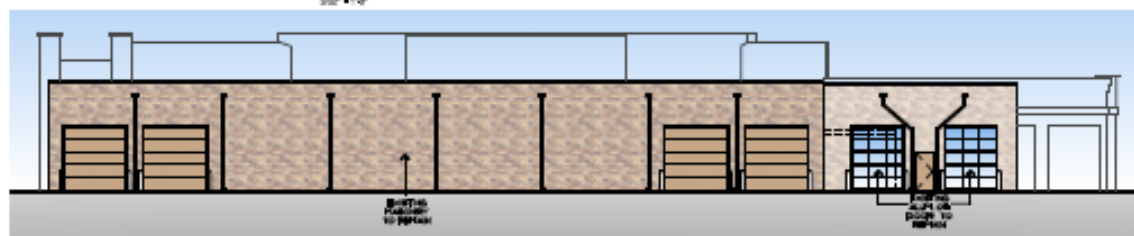
01 REVISED EAST ELEVATION  
332' x 142'



02 REVISED NORTH ELEVATION  
332' x 142'



03 REVISED SOUTH ELEVATION  
332' x 142'



04 WEST ELEVATION  
332' x 142'

# Staff Recommendation

- Staff recommends approval as outlined in the Staff Report