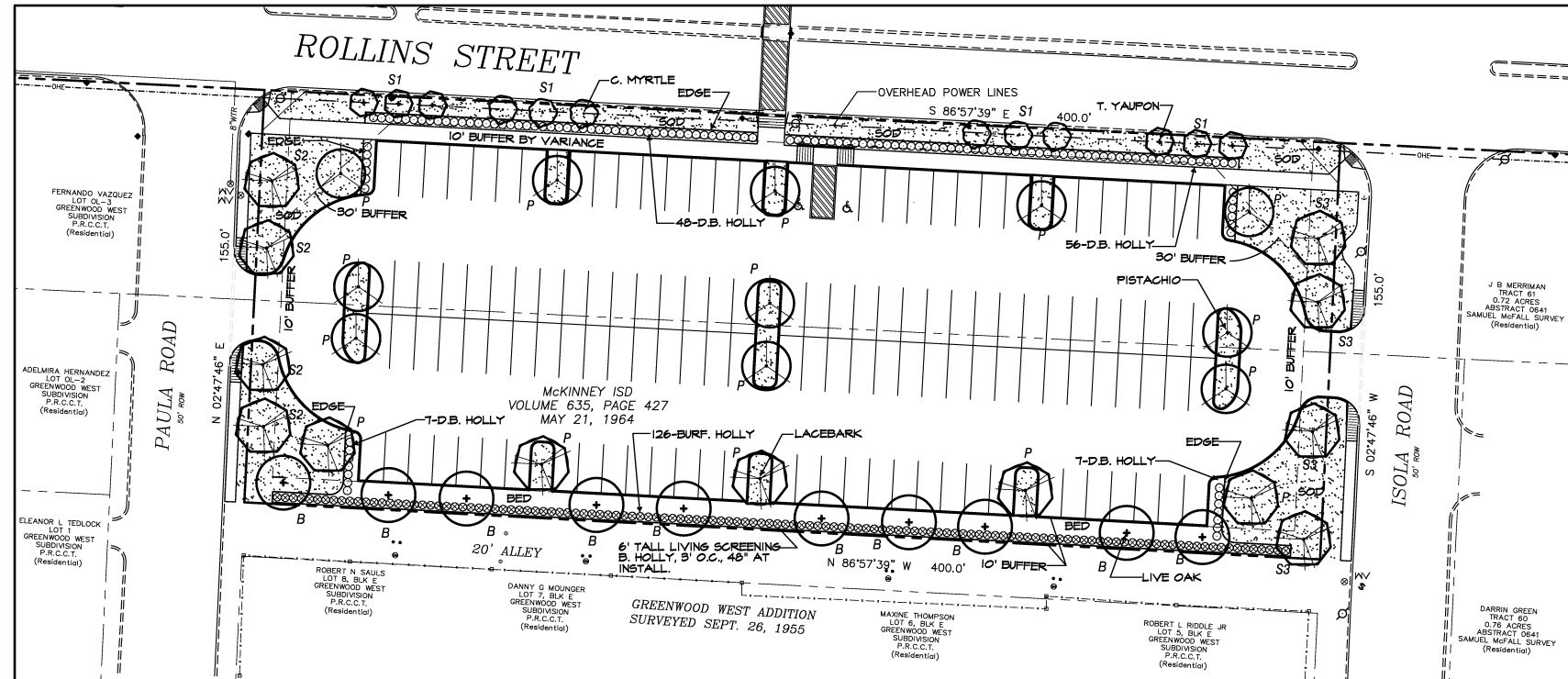


TREES					
QUANTITY	SYMBOL	CALLOUT	COMMON NAME	SCIENTIFIC NAME	SIZE & CONDITION
10		LIVE OAK	Live Oak	Quercus virginiana	4" CALIFER, 12-14' HT./ 5'-6" SPREAD, B&B STRAIGHT TRUNK FULL ROUNDED CANOPY
15		LACEBARK	Lacebark Elm	Ulmus parvifolia	4" CALIFER, 12-14' HT./ 5'-6" SPREAD, B&B STRAIGHT TRUNK FULL ROUNDED CANOPY
11		PISTACHIO	Chinese Pistachio	Pistacia chinensis	4" CALIFER, 12-14' HT./ 5'-6" SPREAD, B&B STRAIGHT TRUNK FULL ROUNDED CANOPY
6		T. YAUPON	Yaupon Holly	Ilex vomitoria	5/4" CALIFER PER TRUNK, 5 TRUNK MIN. 8' HT./4' SPREAD, CONTAINER ONLY FEMALE-HEAVY BERRIED, TREE FORM LIMBED TO 4'
6		C. MYRTLE	Red Flowering Grape Myrtle	Lagerstroemia indica Carolina Beauty	5/4" CAL. TRUNK, 3 TRUNK MIN. 8' HT./4' SPREAD, CONTAINER OR B&B, TREE FORM LIMBED TO 4'
SHRUBS					
QUANTITY	SYMBOL	CALLOUT	COMMON NAME	SCIENTIFIC NAME	SIZE AND CONDITION
153		D.B. HOLLY	Dwarf Burford Holly	Ilex burfordi Nana'	5 GALLON, 16" HT./14" SPREAD, BUSHY, FULL TO GROUND, 3' O.C.
126		BURF. HOLLY	Burford Holly	Ilex burfordi	48" HT./28" SPREAD, BUSHY, FULL TO GROUND, 3' O.C.
GROUND COVER / VINES					
QUANTITY	SYMBOL	CALLOUT	COMMON NAME	SCIENTIFIC NAME	SIZE AND CONDITION
AS SHOWN		SOD	Common Bermuda Grass	Cynodon dactylon	SOLID ROLLED SOD REFER TO SPECIFICATIONS REMOVE NETTINGS DURING INSTALL
MISCELLANEOUS					
AS SHOWN		EDGE	L.F. Ryerson steel edge 1/8" x 4" with 12' stakes, green in color	SEPARATE BEDS AND GRANITE FROM GRASS AREAS	

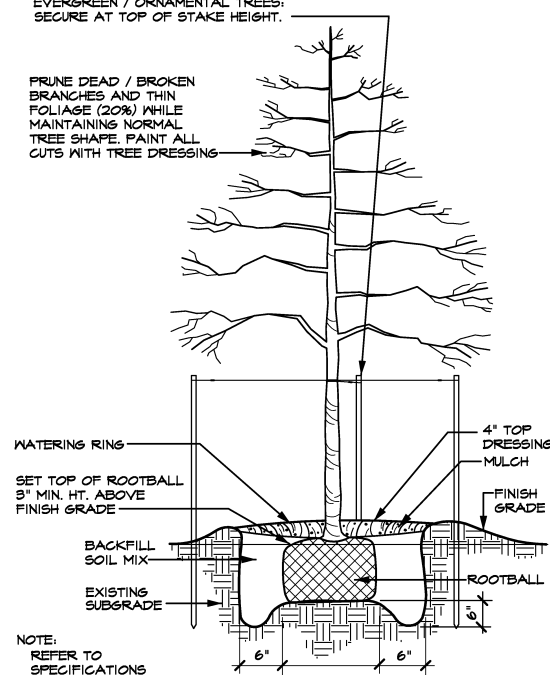
LANDSCAPE CONTRACTOR SHALL VERIFY ALL PLANT QUANTITIES



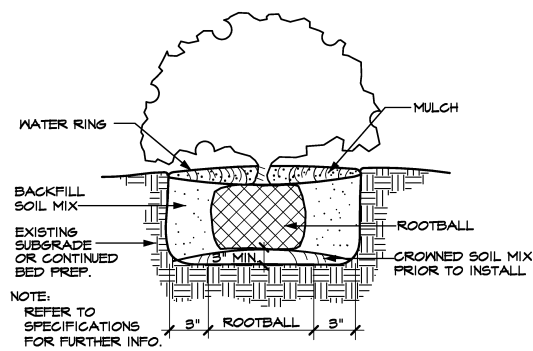
Received by the Planning Department on 3.12.12

(3) PRESSURE TREATED HARDWOOD STAKES (2" X 2" X 8') WITH 12 GAUGE (3) STRAND GALV. STEEL CABLE AND 3" TURNBUCKLE. ENCASE LOOP IN REIN. RUBBER HOSE. CANOPY TREES. SECURE AT LOWEST BRANCH. EVERGREEN / ORNAMENTAL TREES: SECURE AT TOP OF STAKE HEIGHT.

PRUNE DEAD / BROKEN BRANCHES AND THIN FOLIAGE (20%) WHILE MAINTAINING NORMAL TREE SHAPE. PAINT ALL CUTS WITH TREE DRESSING

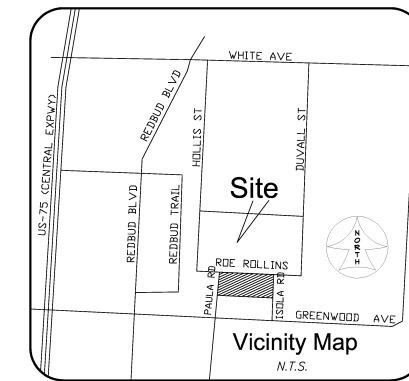


TREE PLANTING DETAIL (TYPICAL) SCALE: N.T.S.



SHRUB PLANTING DETAIL SCALE: N.T.S.

LANDSCAPE TABULATIONS-LOT2	
<b>SITE LANDSCAPING</b>	
10% OF ENTIRE SITE TO BE LANDSCAPED	
TOTAL SITE AREA	61,615 SF
LANDSCAPING REQUIRED	61,615 SF X 10% = 6,161 SF
LANDSCAPING PROVIDED	12,195 SF
<b>LANDSCAPE SETBACKS</b>	
STREET BUFFER AND NON-RESIDENTIAL USE ADJACENT TO SINGLE FAMILY, PROV. 10' LAND AREA ALONG PROPERTY LINE, 1-4" CANOPY TREE PER 40 LF. TREES MAY BE CLUSTERED AT STREET, BUT NOT AT RES. BUFFER.	
STREET - 10' BUFFER, 1-3" CANOPY TREE PER 40 LF, CLUSTERED	
S1	STREET BUFFER (NORTH)-400 LF STREET TREES REQUIRED (1-4" TREE PER 40 LF) 400 LF / 40 = 10 TREES STREET TREES PROVIDED (12 ORNAMENTAL PROV., POWER LINES) 12 ORN. TREES
S2	STREET BUFFER (WEST)-155 LF STREET TREES REQUIRED (1-4" TREE PER 40 LF) 155 LF / 40 = 4 TREES STREET TREES PROVIDED (4 SHADE TREES) 4 TREES
S3	STREET BUFFER (EAST)-155 LF STREET TREES REQUIRED (1-4" TREE PER 40 LF) 155 LF / 40 = 4 TREES STREET TREES PROVIDED (4 SHADE TREES) 4 TREES
RESIDENTIAL - 10' BUFFER, 1-4" CANOPY TREE PER 40 LF, NOT CLUSTERED	
B1	RESIDENTIAL BUFFER (SOUTH)-400 LF LAND. SETBACK TREES REQUIRED (1-4" TREE PER 40 LF) 400 LF / 40 = 10 TREES LAND. SETBACK TREES PROVIDED (10 SHADE TREES) 10 TREES
<b>PARKING LANDSCAPING</b>	
PARKING LAND AREAS GENERALLY 180 SF MIN. 5' WIDE, 8 SF PER SPACE. ONE LAND AREA WITH 65 LF OF EA. SPACE, 1-3" TREE PER 10 SPACES IF OVER 20 TB% OF PARKING ADJ. TO STREET & IN STREET YARD SCREENED BY 3' HEDGE PKG. ADJ. TO P.L. MUST HAVE 5' LAND. AREA AT NON RES. ADJ. 10' AT RES. ADJ. MIN. OF 50% OF TOTAL TREES REQ. FOR PROPERTY TO BE 3' LG. TREES	
P	TOTAL PARKING SPACES 128 SPACES LANDSCAPE AREA REQUIRED 128 SPACES X 8 SF = 1,024 SF LANDSCAPE AREA PROVIDED 1,052 SF
P	PARKING TREES REQUIRED 128 SPACES / 10 = 13 TREES PARKING TREES PROVIDED 16 TREES
PARKING SCREENING HEDGE PROVIDED FOR 75% MIN. HEDGE PROVIDED 5' MIN. BUFFER PROVIDED AT ADJ. LOTS WITH ADJ. PARKING ISLANDS AT END ROWS W/ TREES	
<b>IRRIGATION NOTE:</b>	
ALL REQUIRED LANDSCAPE AREAS SHALL BE PROVIDED WITH AN AUTOMATIC UNDERGROUND IRRIGATION SYSTEM WITH RAIN AND FREEZE SENSORS AND EVAPOTRANSPIRATION (ET) WEATHER BASED CONTROLLERS AND SAID IRRIGATION SYSTEM SHALL BE DESIGNED BY A QUALIFIED PROFESSIONAL AND INSTALLED BY A LICENSED IRRIGATOR.	



**EXISTING TREE NOTE**  
THERE ARE NO PROTECTED TREES THAT EXIST ON THIS SITE.  
MICHAEL RAMSEY TX LIC. 1901

LANDSCAPE PLAN  
MISD FAUBION MIDDLE SCHOOL  
TRACT 41  
being  
35.977 ACRES  
situated in the  
SAMUEL McFALL SURVEY ~ ABST. 641  
MCKINNEY, COLLIN COUNTY, TEXAS  
DATE: FEBRUARY 27, 2012  
REV. DATE: MARCH 12, 2012



**SHW GROUP**  
ARCHITECTS | ENGINEERS | PLANNERS

5717 Legacy Dr. Ste 250 Plano, TX 75024  
P 214.473.2400  
F 214.473.2401

**RAMSEY LANDSCAPE ARCHITECTS, LLC**  
11914 WISHING WELL CT.  
FRISCO, TEXAS 75035  
PHONE (972) 335-0889  
FAX (469) 362-5433  
EMAIL: MIKE.RLA@ATT.NET

PERMIT SET



**MCKINNEY**  
INDEPENDENT SCHOOL DISTRICT

FAUBION MS ADDITION & RENOVATION  
MCKINNEY, TX

CHECKED: RAMSEY  
SCALE: 1" = 30'-0"  
© 2012 SHW Group LLP

ISSUE: 03/12/2012

REVISIONS:


SHEET TITLE:  
**LANDSCAPE PLAN**

**LP 1.01**