

Rotating Exhibits

for consideration

prepared for McKinney Arts Commission

by Commissioner Brewer

“Pairings”

The concept of “Pairings” is an exhibit series presented by McKinney Arts Commission showcased at MPAC Gallery of renowned artist exhibits paired with complimentary local culinary, winery or brewery’s, events and or musicians.

“American Farmer”

Photographer Paul Mobley

Curated Collections Patina Green

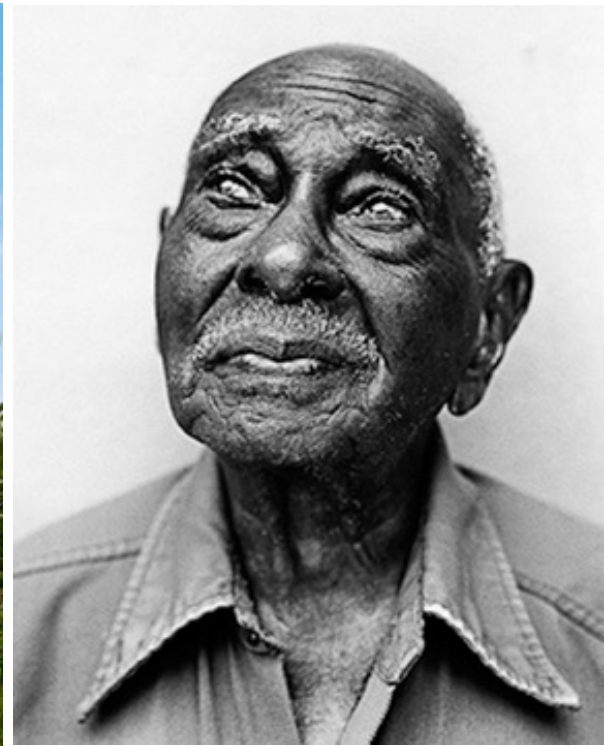
Local Brewery

Awareness - Farm Aid

Paul Mobley

Photographer

<http://eusa.org/exhibition/american-farmer/>





AMERICAN FARMER



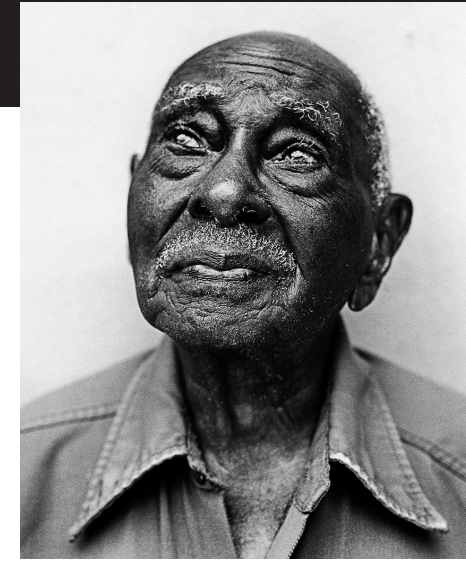
Paul Mobley, **Marvin Cole, Moscow, Idaho**, 2007, archival ink jet print, 60 x 40 inches, Courtesy of private collection



Paul Mobley, **Shirley Schollenberg and her daughter Katie, Ninilchik, Alaska**, 2007, archival ink jet print, 16 x 20 inches, Courtesy of private collection



Paul Mobley, **Robert Hammond, Harrington, Maine**, 2007, archival ink jet print, 30 x 20 inches, Courtesy of private collection



Paul Mobley, **Walter Jackson, Vero Beach, Florida**, 2007, archival ink jet print, 30 x 20 inches, Courtesy of private collection

American Farmer celebrates the living spirit of our heartland through the faces and voices of the people who keep it alive. Featuring forty-five full-color and black-and-white portraits and interviews with farmers across the United States—from cattle ranchers to strawberry growers—***American Farmer*** tells the honest and inspiring stories of the true stewards of our land.

When photographer Paul Mobley set out to capture the soul of our country's farm communities, he encountered an enduring rural culture that remains rooted in the principles of tradition, family, integrity, and hard work. Crisscrossing the country, from Alaska to Florida, Mobley and his camera were welcomed time and time again into the homes of hundreds of farm families. Visit after visit, Mobley came to know the independent farmer's spirit from both behind the lens and across the dinner table. He sought the elusive spirit of agriculture, looking for subjects that mirrored the project's sense of risk and independence. The resulting images show farmers with a strong sense of where they belong in the universe, a close connection to the land and their day-to-day work as it affects the rest of the world.

Out of a collection of more than 200 of these portraits, ExhibitsUSA has distilled a selection of forty-five iconic portraits showing the geographic and cultural diversity of the American Farmer. This vivid portfolio is accompanied by anecdotes and memories in the farmers' own words that are both a testament to their enduring hospitality and a moving glimpse into the hardships and joys of a quickly disappearing way of life—one that once defined our national identity and now struggles to remain vital. From Jim Taber, a young single father raising cattle in Montana, to Shirley Schollenberg, the daughter of Alaskan homesteaders, Mobley's heroic photographs reveal the true face of American farming and remind us what it means to live with simplicity, contentment, and decency in a world that so often forgets.

Paul Mobley is an American photographer who has traveled from remote Alaskan villages to the majestic palaces of Croatia to find the face of a thousand words. Mobley's first book, *American Farmer: Portraits from the Heartland* was first published in the fall of 2008 by Welcome Books and received the 2009 Western Heritage Award for Best Photography Book from the National Cowboy and Western Heritage Museum.

Learn more at www.eusa.org/AmericanFarmer



ExhibitsUSA

2018 Baltimore Avenue, Kansas City, Missouri 64108
800.473.EUSA (3872) ext. 209/208 MoreArt@maa.org
www.eusa.org

TRAVELING EXHIBITION

Artist	Paul Mobley
Description	American Farmer 45 full-color and black and white photographs by Paul Mobley
Dates	June 16, 2018–August 11, 2018 Note: This is first available date, there are pending dates & I have request on a first notification of other openings http://eusa.org/exhibition/american-farmer/
Fees	Texas Pricing for Regional Arts Alliance is as follows: \$2,940 for each 7 week booking, can do multiple bookings (The fee is \$4,200 if a state is not part of alliance) In addition, each venue pays for outbound shipping. Fees are estimated to be between \$1,000-\$2,000
Terms	230 running feet of wall space should be available to display the show. The exhibit should be shipped in 5 crates
Location	MPAC Gallery
Support	consider cost for reception and any additional marketing support

For consideration -VOTING ITEM

Other possible “Pairings”

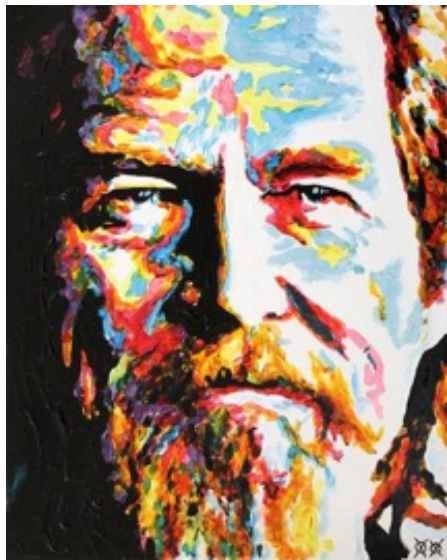
“World renowned...and next door”
The Denton Show

Artist John Bramblitt
Musician Chris Flemmons
Musician Sara Jaffe
Awareness Canine
Canine Cookie

John Bramblitt

Acclaimed Blind Painter from Denton, Texas

<http://www.bramblitt.net>





John Bramblitt is an artist living in Denton Texas, his art has been sold in over thirty countries and he has appeared internationally in print, TV and radio. He has appeared on CBS Evening News with Katie Couric, ABC, NBC, FOX, Discovery Channel and BBC Radio and TV to name a few outlets, and he's been featured in The New York Times and Psychology Today as well as designed the artwork for numerous magazine covers and even the artwork for major film productions. He's the subject of the award winning documentary shorts "Line of Sight' and "Bramblitt." His work has received much recognition including the 'Most Inspirational Video of 2008' from YouTube and three Presidential Service Awards for his innovative art workshops. And John is blind.

Artist

John Bramblitt

Description

Painter without site

World renowned blind painter exhibit and q & a

Dates

November –

Note:

Fees

Texas Pricing

Terms

230 running feet of wall space

Location

MPAC Gallery - pending availability and measurements

“World renowned...and next door”

The Dallas Show

Sculpture Brad Oldham

Storyteller Christy Coltrin

Painter David Motter

Painter Jacqueline Chubirka

Musician Skinny Cooks

Brad Oldham & Christy Coltrin

Sculpturer & Story teller Dallas, Texas

<http://www.shopbradoldham.com/pages/about-us>





From public community spaces to private homes, sculptor Brad Oldham has earned recognition by elevating many environments worldwide with his site-specific artworks and has earned recognition. In 2011, the Texas Society of Architects recognized Oldham with its prestigious Artisan Award and heralded him as the Artist/Craftsman of the Year by the American Institute for Architects.



Brad Oldham and Christy Coltrin bring art, humor and beauty to life through sculptures and stories. The two have collaborated on public art installations and private commissions for more than eight years as business partners, and longer as a husband-wife team.

From public community spaces to private homes, sculptor Brad Oldham has earned recognition by elevating many environments worldwide with his site-specific artworks and has earned recognition. In 2011, the Texas Society of Architects recognized Oldham with its prestigious Artisan Award and heralded him as the Artist/Craftsman of the Year by the American Institute for Architects. In 2010, the Americans for the Arts included his \$1.4 million installation *The Traveling Man* in its prestigious Year in Review program.

In his large-scale sculptures, which enhance the communities and in the collections of sculptures created for individual retail sales, the viewer will see that Oldham's meticulous craftsmanship, passion, and creativity are cast into his every creation. He enjoys exploring his visual aesthetic to communicate stories, yet the quality work of his work remains constant and strong.

Oldham's long list of sculptures may be viewed around the globe. His public pieces on display include locations such as the Center for Brain Health in Dallas, Texas, along with his work entitled *Whimsy* in the city's Exall Park and a 28-piece, indoor-outdoor installation at the Lumen Hotel. In 2007, the artist's work was featured in a month-long installation on *Good Morning America*. Recent commissions for Oldham's work include a sculpture for the National Geographic headquarters in Washington, D.C., the entrance of Mitchell Park Library in Palo Alto, California, the Wayne Gretzky Sports Centre in Brantford, Ontario, and the Baku Flame Towers in Baku, Azerbaijan.

David Motter

Painter from Oak Cliff, Texas

<http://www.davidmotter.com>



Born in Oklahoma in 1976, David Motter now calls Oak Cliff, Texas home. He has spent half his life as a designer and has a line of T-shirts that he sells through local retailers. He works in the advertising industry in Dallas.

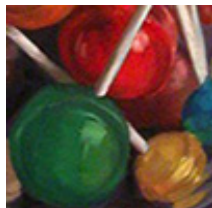
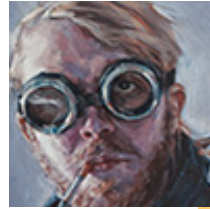
Similar to the art David creates on the computer, his paintings celebrate his youth, from popular music to skateboarding. Yet unlike most of his past work, his paintings also deal with his family life, his struggles with faith and the cultural diversity of his surroundings.

David's work is largely abstract, but often is often rooted in the figure. He starts each painting with a thumbnail sketch at best. Then, he mixes process with experimentation until he discovers the story hidden in each canvas. He creates characters and settings that are deeply personal, but leaves the viewer with enough questions to find their own connection.

Jacqueline Chubirka

Painter from Oak Cliff, Texas

<http://www.chubirka.com/index.html>



“World renowned...and local”
The McKinney Show

Artist(s)
Musician
Winery

This is one I would like to discuss at our next meeting. Open suggestions and discussion.