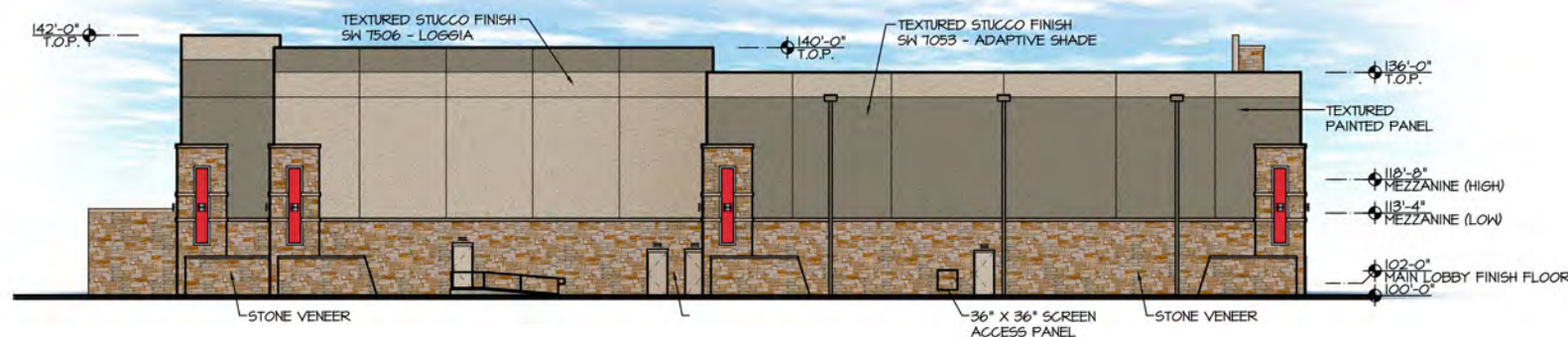


NORTH ELEVATION MATERIAL PERCENTAGES

TEXTURED STUCCO FINISH (PAINTED)	64%
STONE VENEER	35%
MOZ METAL PANEL	1%

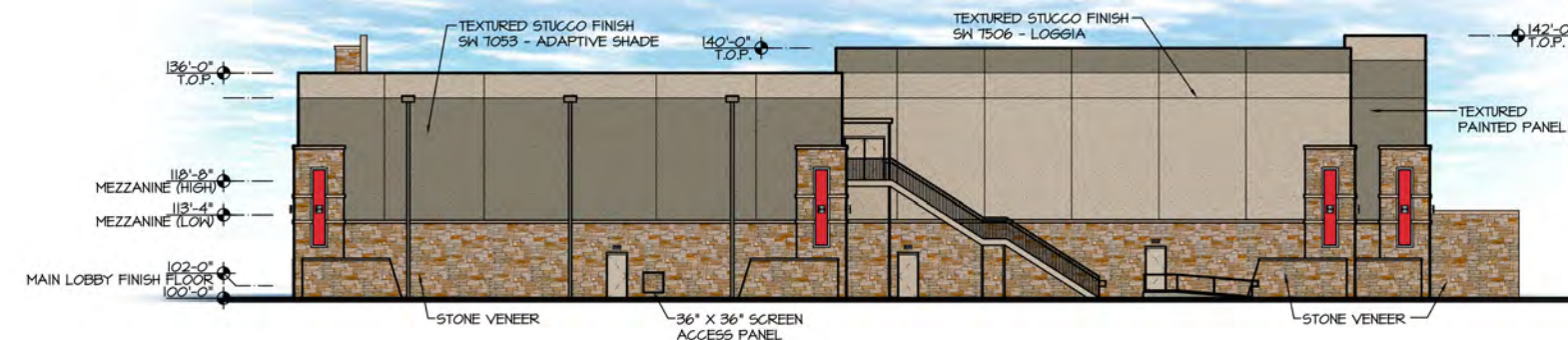
D NORTH ELEVATION (REAR)
 A3.1 SCALE: 1/16" = 1'-0"



WEST ELEVATION MATERIAL PERCENTAGES

TEXTURED STUCCO FINISH (PAINTED)	59%
STONE VENEER	40%
MOZ METAL PANEL	1%

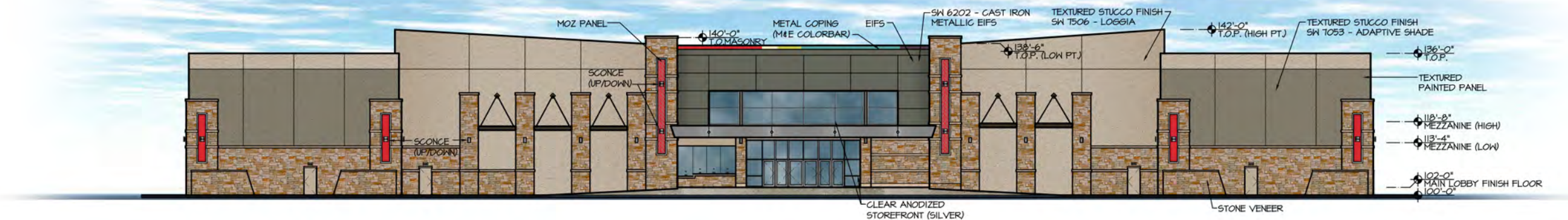
B WEST ELEVATION (SIDE)
 A3.1 SCALE: 1/16" = 1'-0"



EAST ELEVATION MATERIAL PERCENTAGES

TEXTURED STUCCO FINISH (PAINTED)	59%
STONE VENEER	40%
MOZ METAL PANEL	1%

C EAST ELEVATION (SIDE)
 A3.1 SCALE: 1/16" = 1'-0"



SOUTH ELEVATION MATERIAL PERCENTAGES

TEXTURED STUCCO FINISH (PAINTED)	48%
EIFS	13%
MOZ METAL PANEL	1%
STONE VENEER	38%

A SOUTH ELEVATION (FRONT)
 A3.1 SCALE: 1/16" = 1'-0"

RECEIVED

By Planning Department at 9:15 am, May 14, 2015

