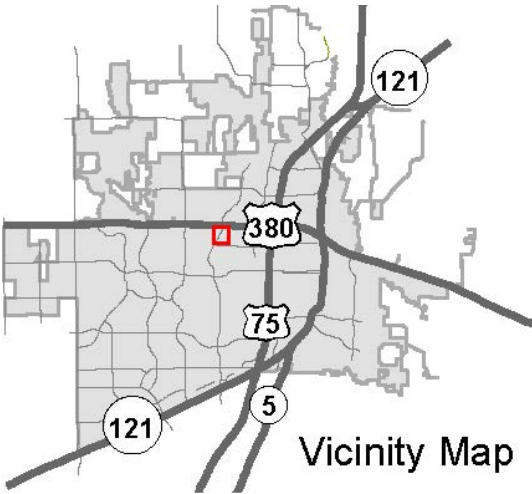
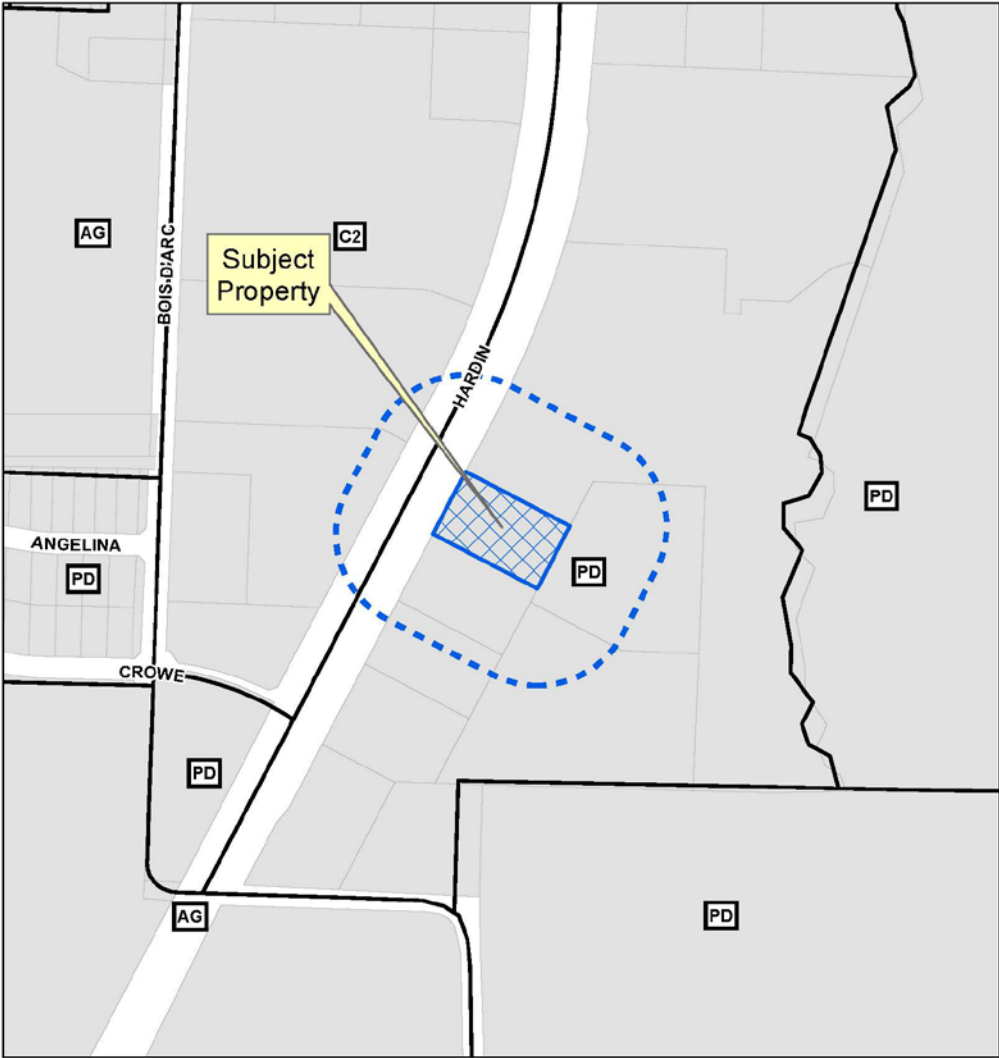


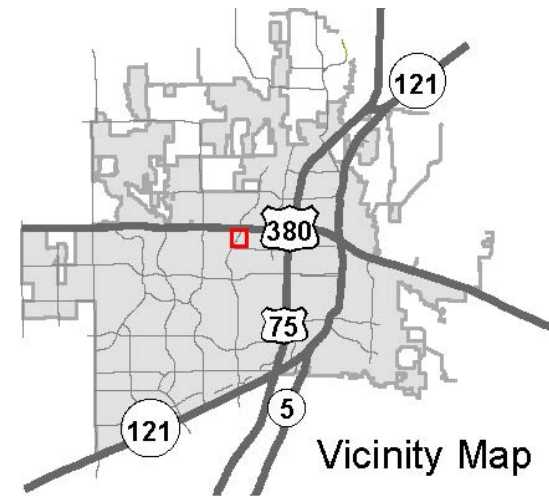
7-11 SUP

19-0007SUP

Location Map



Aerial Exhibit

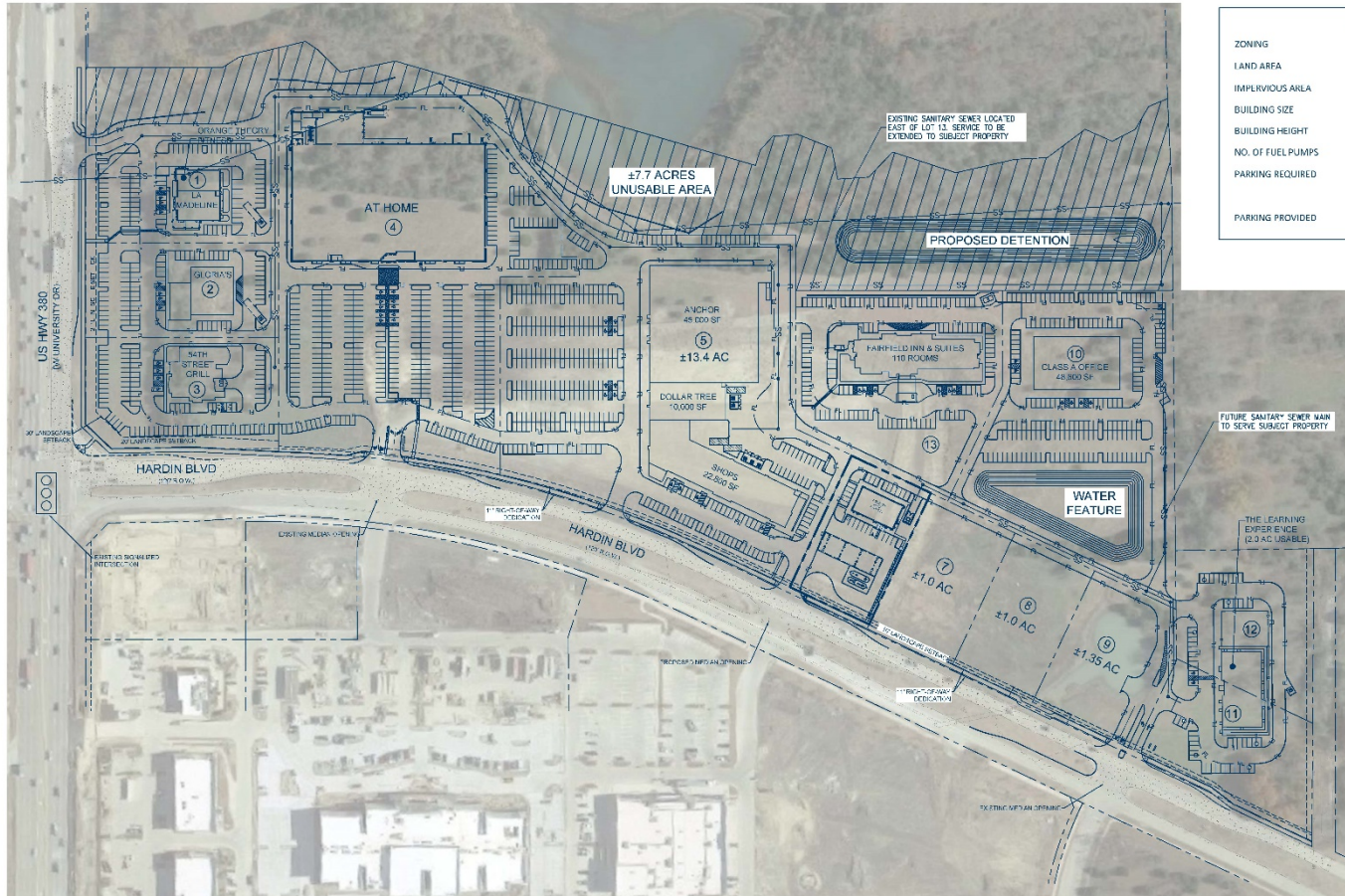




Looking East



FOR INFORMATION PURPOSES ONLY



SITE DATA	
ZONING	PD 2018-09-070 (BASE ZONING C3)
LAND AREA	45,041 S.F. (1.034 Ac.)
IMPERVIOUS AREA	37,768 S.F. (84%)
BUILDING SIZE	4,100 S.F.
BUILDING HEIGHT	18'-8"
NO. OF FUEL PUMPS	16
PARKING REQUIRED	17 SPACES (1:250 S.F. RETAIL) 4 SPACES (1:6 PUMP STATIONS)
PARKING PROVIDED	25 SPACES

Surrounding development

Proposed SUP Exhibit

