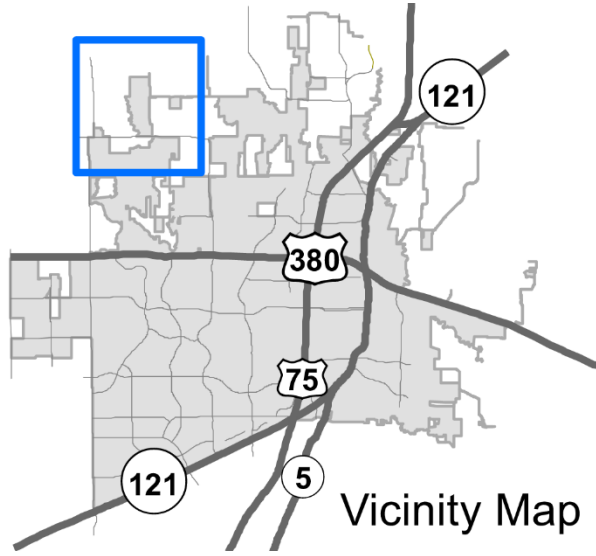
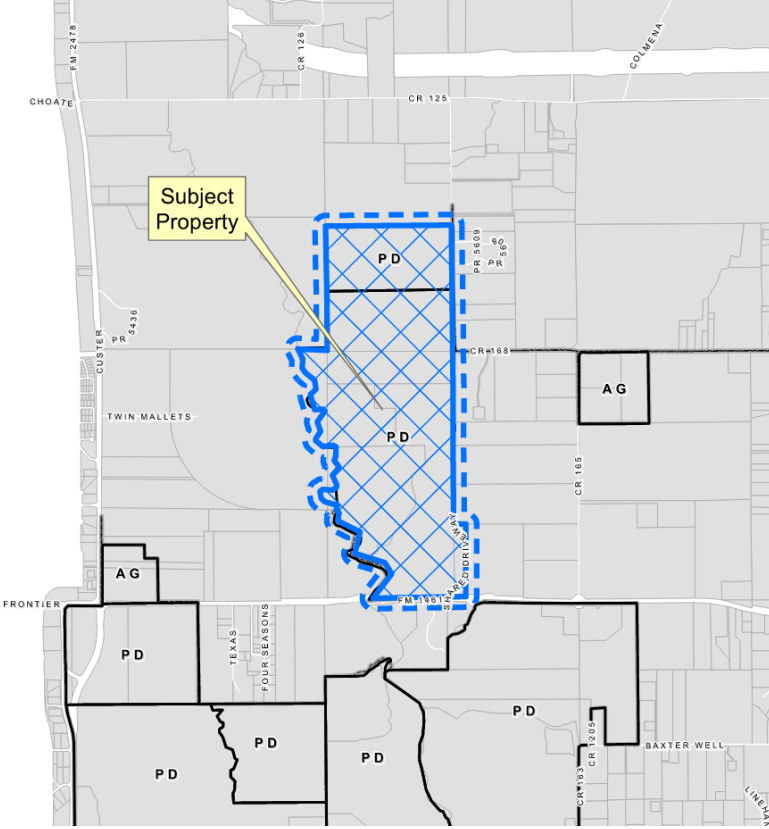


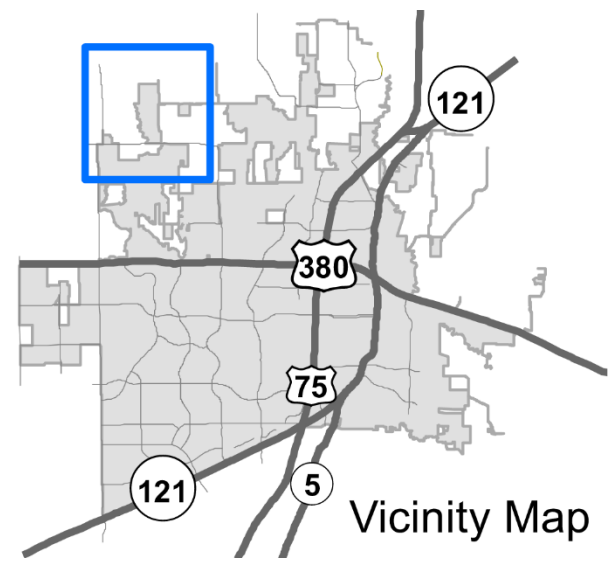
# Aster Park Private Streets SUP

22-0004SUP

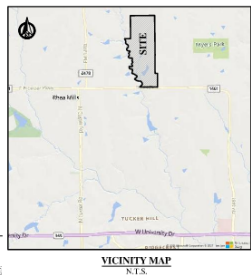
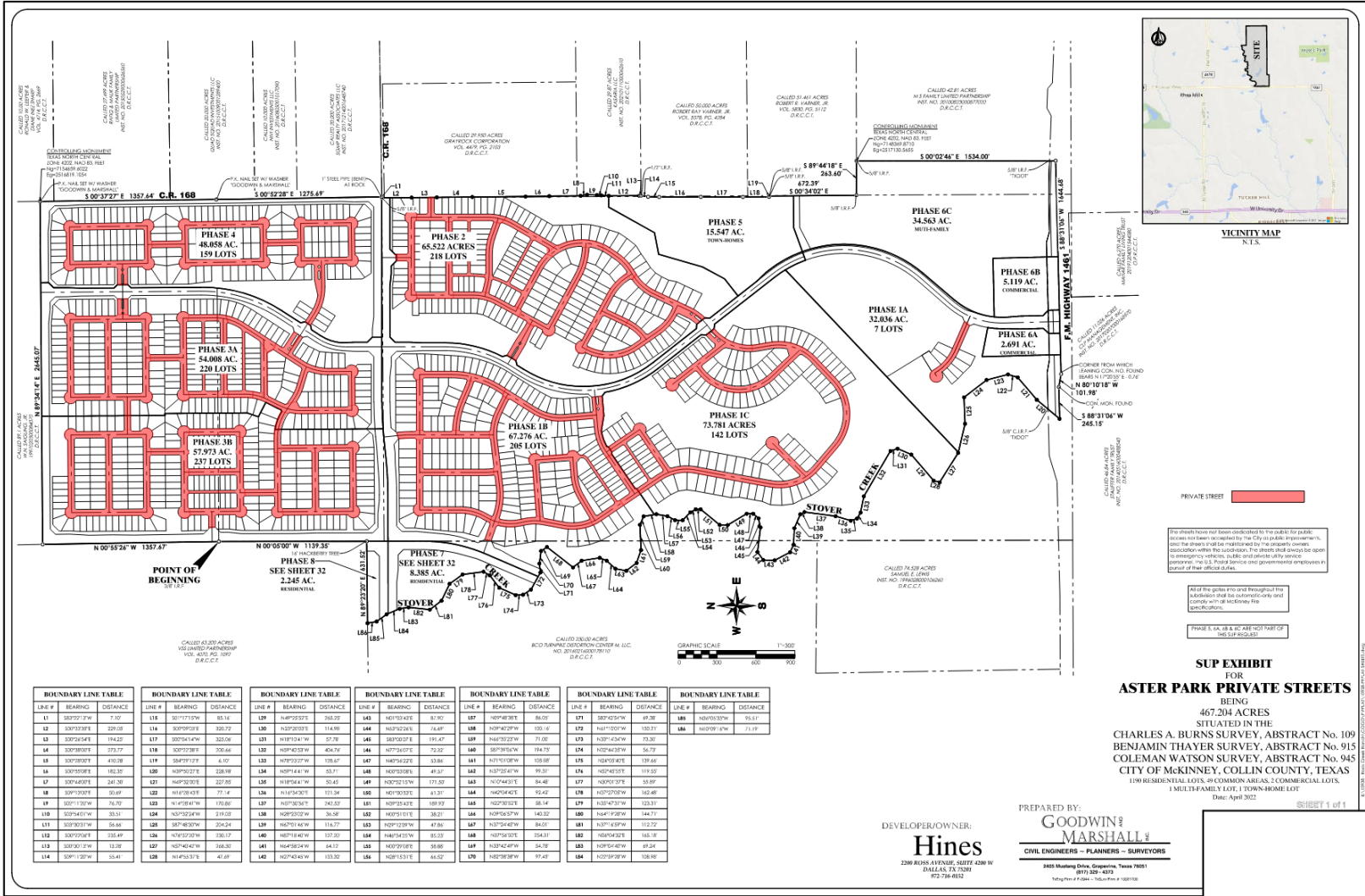
# Location Map



# Aerial Exhibit



# Proposed SUP Exhibit



PRIVATE STREET

The sheets have not been designated by the public for public access or been captioned by the City as public improvements. The sheets shall not be reproduced by the property owners association within the location. The sheets shall always be open to engineering, and public, public and private utility service personnel. The U.S. Postal Service and governmental employees in pursuit of their official duties.

All of the rights are used throughout the addition that are autonomous and comply with the highway law specifications.

PHASE 1A, 1B & 1C ARE NOT PART OF THE SUP EXHIBIT

**SUP EXHIBIT FOR ASTER PARK PRIVATE STREETS**  
 BEING  
**467.204 ACRES**  
 SITUATED IN THE  
 CHARLES A. BURNS SURVEY, ABSTRACT NO. 109  
 BENJAMIN THAYER SURVEY, ABSTRACT NO. 915  
 COLEMAN WATSON SURVEY, ABSTRACT NO. 945  
 CITY OF MCKINNEY, COLLIN COUNTY, TEXAS  
 1100 RESIDENTIAL LOTS, 40 COMMON AREAS, 2 COMMERCIAL LOTS,  
 1 SMALL FAMILY LOT, 1 TOWN-HOME LOT  
 Date: April 2022

BOUNDARY LINE TABLE			BOUNDARY LINE TABLE			BOUNDARY LINE TABLE			BOUNDARY LINE TABLE			BOUNDARY LINE TABLE			BOUNDARY LINE TABLE			BOUNDARY LINE TABLE		
LINE #	BEARING	DISTANCE	LINE #	BEARING	DISTANCE	LINE #	BEARING	DISTANCE	LINE #	BEARING	DISTANCE	LINE #	BEARING	DISTANCE	LINE #	BEARING	DISTANCE	LINE #	BEARING	DISTANCE
1	S09°27'34"	7.92	118	N01°17'13"W	85.16	129	N46°25'25"E	263.22	143	N01°03'43"E	87.92	157	N08°48'39"E	96.05	171	S89°45'14"W	89.28	185	N40°05'33"W	95.51
2	S09°25'38"E	229.05	119	S09°09'18"E	305.72	130	N22°25'03"E	114.89	144	N29°22'24"W	74.69	158	N08°42'29"W	101.01	172	N41°1'00"W	103.31	186	N40°09'47"W	71.19
3	S09°25'34"E	194.22	120	S09°14'49"W	302.26	131	N18°13'04"W	87.78	145	S89°25'23"E	191.47	159	N40°25'22"W	71.90	173	N20°14'23"W	73.30			
4	S09°25'03"E	372.77	121	S09°13'08"E	308.64	132	N08°15'33"W	404.79	146	N07°25'02"E	79.22	160	S00°25'00"W	84.79	174	N02°04'23"W	56.79			
5	S09°25'02"E	410.28	122	S08°57'12"E	470.50	133	N19°25'27"W	138.47	147	N48°45'22"E	93.86	161	N21°03'02"W	108.89	175	N24°05'41"E	139.65			
6	S09°25'01"E	182.35	123	N40°25'21"E	128.99	134	N00°15'01"E	53.71	148	N00°03'01"E	45.57	162	N20°25'41"W	99.31	176	N00°43'01"E	119.55			
7	S09°44'07"E	241.26	124	N46°25'25"E	227.05	135	N18°56'41"W	55.45	149	N02°25'13"W	171.52	163	N02°44'31"E	54.48	177	N00°25'37"E	55.89			
8	S09°17'07"E	50.69	125	N41°15'43"E	77.74	136	N14°15'26"E	121.24	150	N01°00'01"E	41.37	164	N02°05'42"E	12.42	178	N02°25'00"W	102.48			
9	S09°17'06"W	76.70	126	N14°25'14"W	176.86	137	N07°30'01"E	362.53	151	N08°25'47"E	189.87	165	N02°05'01"E	48.14	179	N20°47'37"W	103.31			
10	S09°16'41"W	35.51	127	N07°22'24"W	218.22	138	N49°25'02"W	36.26	152	N09°15'01"E	38.21	166	N09°08'54"W	140.22	180	N41°1'29"W	144.71			
11	S09°20'31"W	56.46	128	N07°48'30"W	204.24	139	N40°25'16"W	116.77	153	N07°25'09"W	47.86	167	N20°25'41"W	84.01	181	N20°16'59"W	112.72			
12	S09°25'08"E	138.49	129	N07°25'29"W	338.17	140	N46°25'16"W	127.50	154	N46°25'16"W	85.25	168	N07°25'01"E	254.31	182	N08°04'23"E	146.18			
13	S09°17'19"W	12.88	130	N07°40'47"W	258.26	141	N46°25'16"W	44.27	155	N07°25'01"E	50.88	169	N20°25'41"W	26.78	183	N09°25'41"W	45.24			
14	S09°17'07"W	55.41	131	N14°25'12"E	47.87	142	N07°44'29"W	133.50	156	N08°15'11"E	66.52	170	N02°25'09"W	37.47	184	N02°25'09"W	38.95			

DEVELOPER/OWNER:  
**Hines**  
 2200 BOSS AVENUE, SUITE 4200 W  
 DALLAS, TX 75201  
 972-788-0832

PREPARED BY:  
**GOODWIN & MARSHALL**  
 CIVIL ENGINEERS - PLANNERS - SURVEYORS

2003 Mustang Drive, Coppell, Texas 75011  
 972-281-4870  
 info@goodwin-marshall.com | 1001100

SHEET 1 of 1

