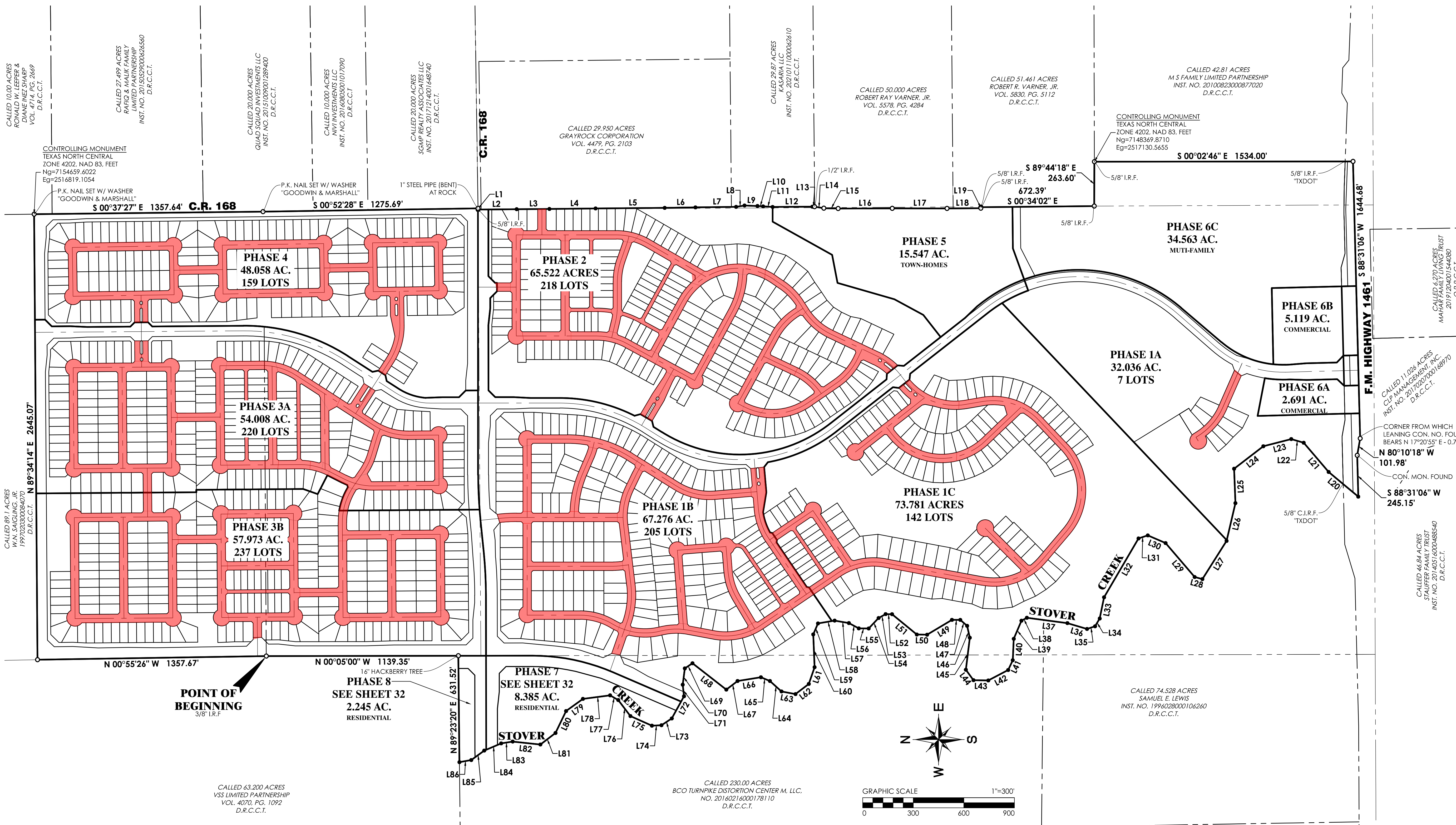


VICINITY MAP
N.T.S.



The streets have not been dedicated to the public for public access nor been accepted by the City as public improvements, and the streets shall be maintained by the property owners association within the subdivision. The streets shall always be open to emergency vehicles, public and private utility service personnel, the U.S. Postal Service and governmental employees in pursuit of their official duties.

All of the gates into and throughout the subdivision shall be automatic-only and comply with all McKinney Fire specifications.

PHASE 5, 6A, 6B & 6C ARE NOT PART OF THIS SUP REQUEST

SUP EXHIBIT FOR ASTER PARK PRIVATE STREETS

BEING 467.204 ACRES SITUATED IN THE CHARLES A. BURNS SURVEY, ABSTRACT No. 109 BENJAMIN THAYER SURVEY, ABSTRACT No. 915 COLEMAN WATSON SURVEY, ABSTRACT No. 945 CITY OF MCKINNEY, COLLIN COUNTY, TEXAS
1190 RESIDENTIAL LOTS, 49 COMMON AREAS, 2 COMMERCIAL LOTS, 1 MULTI-FAMILY LOT, 1 TOWN-HOME LOT
Date: April 2022

LINE #	BEARING	DISTANCE
L1	S83°22'13"W	7.10'
L2	S00°33'35"E	229.05'
L3	S00°26'54"E	194.25'
L4	S00°38'00"E	273.77'
L5	S00°28'00"E	410.28'
L6	S00°55'08"E	182.35'
L7	S00°44'00"E	241.30'
L8	S09°13'00"E	50.69'
L9	S02°11'20"W	76.70'
L10	S03°54'01"W	33.51'
L11	S03°30'31"W	56.66'
L12	S00°22'06"E	235.49'
L13	S00°30'13"W	13.28'
L14	S09°11'20"W	55.41'

LINE #	BEARING	DISTANCE
L15	S01°17'15"W	85.16'
L16	S00°09'03"E	320.72'
L17	S00°04'14"W	325.06'
L18	S00°22'38"E	200.66'
L19	S84°29'12"E	6.10'
L20	N39°50'27"E	228.98'
L21	N49°32'00"E	227.85'
L22	N16°28'43"E	77.14'
L23	N14°28'41"W	170.86'
L24	N37°32'24"W	219.03'
L25	S87°48'30"W	204.24'
L26	N76°52'20"W	230.17'
L27	N57°40'42"W	268.30'
L28	N14°55'37"E	47.69'

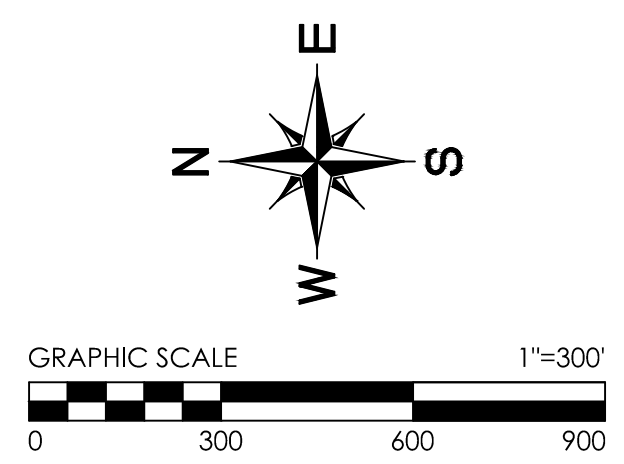
LINE #	BEARING	DISTANCE
L29	N49°25'52"E	265.25'
L30	N23°20'03"E	114.98'
L31	N18°10'41"W	57.78'
L32	N59°40'53"W	404.76'
L33	N78°23'27"W	128.67'
L34	N59°14'41"W	53.71'
L35	N18°04'41"W	50.45'
L36	N16°34'30"E	121.34'
L37	N07°30'56"E	242.53'
L38	N28°23'02"W	36.58'
L39	N67°01'46"W	116.77'
L40	N87°18'40"W	127.20'
L41	N64°58'24"W	64.12'
L42	N27°43'45"W	133.32'

LINE #	BEARING	DISTANCE
L43	N01°03'43"E	87.90'
L44	N53°52'26"E	76.69'
L45	S83°00'07"E	191.47'
L46	N77°26'07"E	72.32'
L47	N40°56'22"E	53.86'
L48	N00°03'08"E	49.57'
L49	N30°52'15"W	171.50'
L50	N01°00'53"E	61.31'
L51	N39°25'43"E	189.93'
L52	N00°51'01"E	38.21'
L53	N29°12'09"W	47.86'
L54	N46°34'25"W	85.23'
L55	N00°29'08"E	58.88'
L56	N28°15'31"E	66.52'

LINE #	BEARING	DISTANCE
L57	N09°48'38"E	86.05'
L58	N09°40'29"W	100.16'
L59	N66°35'23"W	71.00'
L60	S87°39'06"W	194.73'
L61	N71°01'08"W	105.08'
L62	N37°25'41"W	99.31'
L63	N10°44'31"E	84.48'
L64	N42°04'42"E	92.42'
L65	N22°30'52"E	58.14'
L66	N09°06'57"E	140.32'
L67	N37°24'45"W	84.01'
L68	N37°56'50"E	254.31'
L69	N33°42'49"W	54.78'
L70	N82°38'38"W	97.45'

LINE #	BEARING	DISTANCE
L71	S83°42'54"W	69.38'
L72	N61°10'01"W	150.21'
L73	N33°14'34"W	73.30'
L74	N02°44'35"W	56.73'
L75	N24°05'40"E	139.66'
L76	N52°45'55"E	119.55'
L77	N30°01'37"E	55.89'
L78	N07°27'05"W	162.48'
L79	N35°47'31"W	123.31'
L80	N64°19'28"W	144.71'
L81	N37°16'59"W	112.72'
L82	N06°04'32"E	165.18'
L83	N09°04'40"W	69.24'
L84	N22°59'28"W	108.98'

LINE #	BEARING	DISTANCE
L85	N36°05'33"W	95.51'
L86	N10°09'16"W	71.19'



PREPARED BY:
GOODWIN & MARSHALL INC.
CIVIL ENGINEERS ~ PLANNERS ~ SURVEYORS
2405 Mustang Drive, Grapevine, Texas 76051
(817) 329-4373
TXEng Firm # F-2944 - TXSurv Firm # 10021700

DEVELOPER/OWNER:
Hines
2200 ROSS AVENUE, SUITE 4200 W
DALLAS, TX 75201
972-716-0152