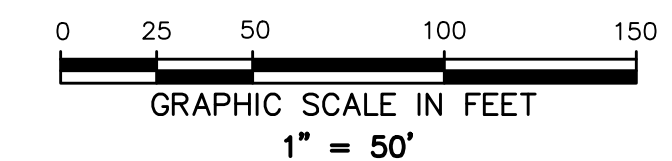
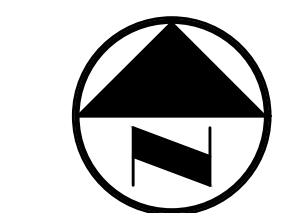


VICINITY MAP
(NOT TO SCALE)



LEGEND

- D.R.C.C.T. DEED RECORDS OF COLLIN COUNTY, TEXAS
- O.P.R.D.C.T. OFFICIAL PUBLIC RECORDS OF COLLIN COUNTY, TEXAS
- INST. NO. INST. NUMBER
- VOL. VOLUME
- PG. PAGE
- R.O.W. RIGHT-OF-WAY
- IRS 5/8-INCH IRON ROD W/"PACHCO KOCH" CAP SET
- CONTROLLING MONUMENT
- PROPERTY LINE
- (C.M.) CENTERLINE RIGHT-OF-WAY
- EXISTING EASEMENT LINE
- STW STORM SEWER MANHOLE
- GAS* UG GAS MARKER
- PPA POWER POLE
- SS SAN. SEWER MANHOLE
- LS LIGHT STANDARD
- UNDERGROUND GAS LINE
- FENCE
- OVERHEAD UTILITY LINE

NOTES:

1. Bearing system for this survey is based on the State Plane Coordinate System, Texas North Central Zone (4202), North American Datum of 1983 (Adjustment Realization 2011). Distances reported have been scaled by applying the TxDOT Collin County surface adjustment factor of 1.000152710.
2. Coordinates shown are based on the State Plane Coordinate System, Texas North Central Zone (4202), North American Datum of 1983 (Adjustment Realization 2011), on Grid values, no scale and no projection.
3. The survey abstract lines shown hereon are approximate and are not located on the ground.
4. All proposed lots situated in whole or in part within the city's corporate limits comply with the minimum size requirements of the governing zoning district and the requirements of the subdivision ordinance.

SEE SHEET 2 OF 2 FOR LINE AND CURVE TABLES

"PRELIMINARY-FINAL PLAT FOR REVIEW PURPOSES ONLY"

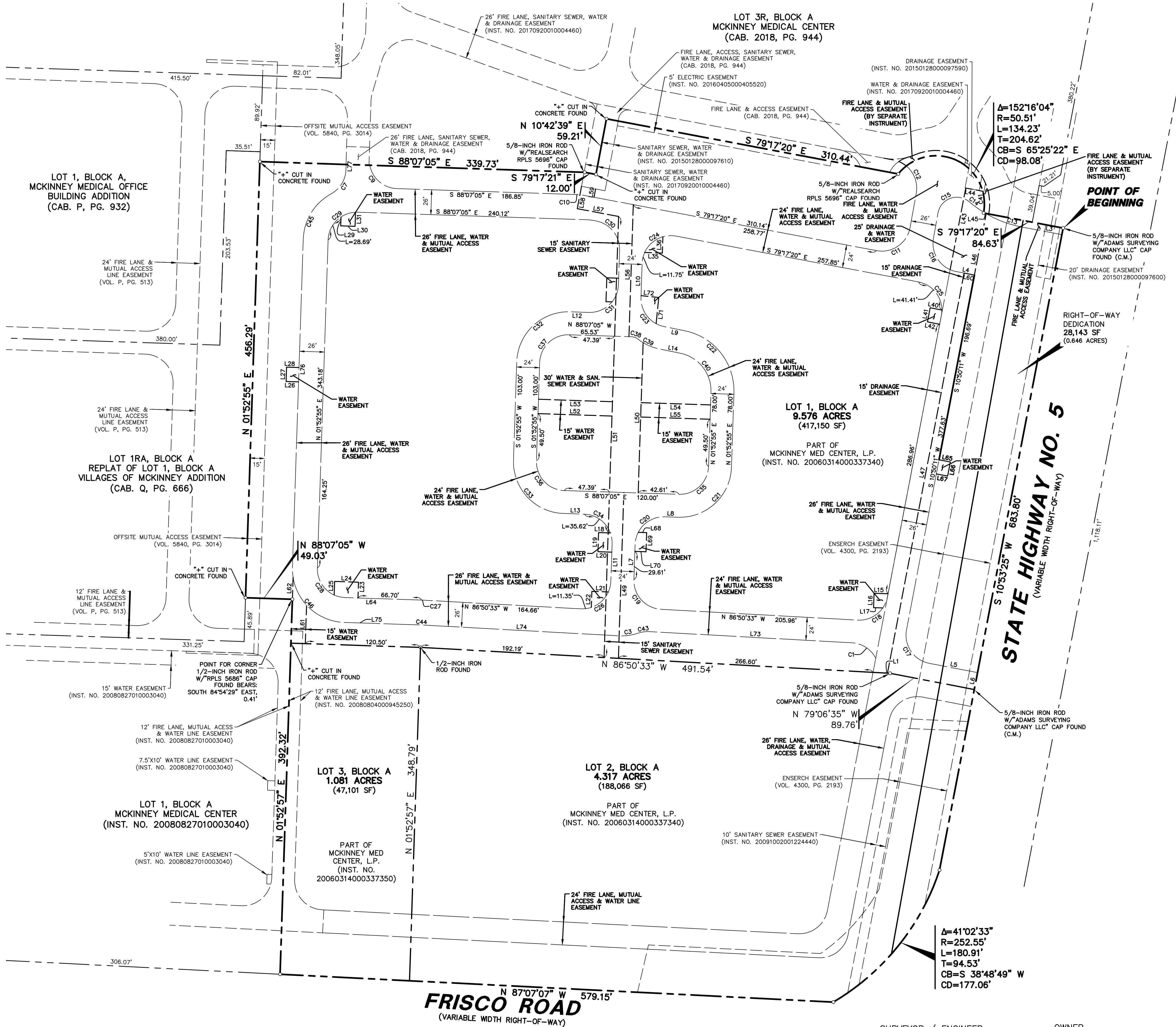
PRELIMINARY

THIS DOCUMENT SHALL NOT BE RECORDED FOR ANY PURPOSE AND SHALL NOT BE USED OR VIEWED OR RELIED UPON AS A FINAL SURVEY DOCUMENT. RELEASED 8/7/19.

**PRELIMINARY-FINAL PLAT
LOT 1, 2 AND 3, BLOCK A
BROADSTONE MCKINNEY**

14.974 ACRE TRACT LOCATED IN THE CITY OF MCKINNEY, TEXAS AND BEING OUT OF THE WILLIAM HEMPHILL SURVEY, ABSTRACT NO. 449, COLLIN COUNTY, TEXAS
SHEET 1 OF 2

Pacheco Koch		7557 RAMBLER ROAD, SUITE 1400 DALLAS, TX 75231 972.235.3031	
		TX REG. ENGINEERING FIRM F-469	
		TX REG. SURVEYING FIRM LS-1008000	
DRAWN BY	CHECKED BY	SCALE	DATE
ACD	MCC	1"=50'	AUGUST 2019
			JOB NUMBER
			4258-19.134



SURVEYOR / ENGINEER

PACHECO KOCH CONSULTING ENGINEERS
7557 RAMBLER ROAD, SUITE 1400
DALLAS, TEXAS 75231
PH: (972) 235-3031
CONTACT: KYLE HARRIS

OWNER

MCKINNEY MED CENTER, L.P.
5400 DALLAS NORTH PARKWAY
FRISCO, TEXAS 75034
PH: (214) 389-2019
CONTACT: DAVID DIERKES

ADELIZ... 2:33 PM... 19.134.DWG... SURVEY... CSD 2018\4258-19.134P.DWG

