

WEST SITE SUMMARY

SITE INFORMATION
 GROSS SITE AREA: 5.54 ACRES
 GROSS DENSITY: 22.88 DU/AC
 NET SITE AREA: 4.3 ACRES
 NET DENSITY: 28.84 DU/AC

TOTAL NUMBER OF DWELLING UNITS _____ 124 (64 S.F. AVG.)
 1-BDRM = 76 (61%)
 2-BDRM = 38 (31%)
 3-BDRM = 10 (8%)

PROPOSED NEW PD PARKING REQUIREMENT ... 212 SPACES
 76 1-BDRM x 1.0 = 76
 38 2-BDRM x 2.0 = 76
 10 3-BDRM x 3.0 = 30
 GUEST PARKING: 0.20 x 124 DU = 25

ENCLOSED PARKING
 508 x 124 DU = 62 ENCLOSED SPACES (62 SPACES OF THE REQUIRED SPACES SHALL BE ENCLOSED)

PARKING PROVIDED _____ 214 SPACES
 SURFACE: = 118 SPACES
 GARAGE: = 96 SPACES
 TANDEM: = 38 SPACES
 DETACHED GARAGE: = 24 SPACES

PARKING RATIO W/ TANDEM: 1.75 SPACE/UNIT
 PARKING RATIO W/O TANDEM: 1.42 SPACE/UNIT

TOTAL SITE SUMMARY

SITE INFORMATION
 GROSS SITE AREA: 16.44 ACRES
 GROSS DENSITY: 21.53 DU/AC
 NET SITE AREA: 13.4 ACRES
 NET DENSITY: 26.41 DU/AC

TOTAL NUMBER OF DWELLING UNITS _____ 354 (66 S.F. AVG.)
 1-BDRM = 211 (60%)
 2-BDRM = 113 (32%)
 3-BDRM = 30 (8%)

PROPOSED NEW PD PARKING REQUIREMENT ... 598 SPACES
 211 1-BDRM x 1.0 = 211
 113 2-BDRM x 2.0 = 226
 30 3-BDRM x 3.0 = 90
 GUEST PARKING: 0.20 x 354 DU = 71

ENCLOSED PARKING
 508 x 354 DU = 177 ENCLOSED SPACES (177 SPACES OF THE REQUIRED SPACES SHALL BE ENCLOSED)

PARKING PROVIDED _____ 616 SPACES
 SURFACE: = 347 SPACES
 PARALLEL: = 2 SPACES
 GARAGE: = 82 SPACES
 TANDEM: = 79 SPACES
 DETACHED GARAGE: = 46 SPACES
 LEASING: = 11 SPACES

PARKING RATIO W/ TANDEM: 1.74 SPACE/UNIT
 PARKING RATIO W/O TANDEM: 1.52 SPACE/UNIT

SYMBOL LEGEND

II BUILDING TYPE
 10 BUILDING NUMBER
 SCR SPRINKLER CONTROL ROOM
 & HANDICAP PARKING SPACE, GARAGE OR ANSI UNIT

APPROXIMATE LOCATION OF ELECTRICAL TRANSFORMER UNIT (DASHED LINE INDICATES ASSOCIATED METER BANK)
 24' FIRE LANE

EAST SITE SUMMARY

SITE INFORMATION
 GROSS SITE AREA: 10.9 ACRES
 GROSS DENSITY: 21.01 DU/AC
 NET SITE AREA: 9.1 ACRES
 NET DENSITY: 25.16 DU/AC

TOTAL NUMBER OF DWELLING UNITS _____ 230 (60 S.F. AVG.)
 1-BDRM = 135 (59%)
 2-BDRM = 80 (35%)
 3-BDRM = 15 (6%)

PROPOSED NEW PD PARKING REQUIREMENT ... 386 SPACES
 135 1-BDRM x 1.0 = 135
 80 2-BDRM x 2.0 = 160
 15 3-BDRM x 3.0 = 45
 GUEST PARKING: 0.20 x 230 DU = 46

ENCLOSED PARKING
 508 x 230 DU = 115 ENCLOSED SPACES (115 SPACES OF THE REQUIRED SPACES SHALL BE ENCLOSED)

PARKING PROVIDED _____ 402 SPACES
 SURFACE: = 234 SPACES
 PARALLEL: = 2 SPACES
 GARAGE: = 43 SPACES
 TANDEM: = 40 SPACES
 DETACHED GARAGE: = 12 SPACES
 LEASING: = 11 SPACES

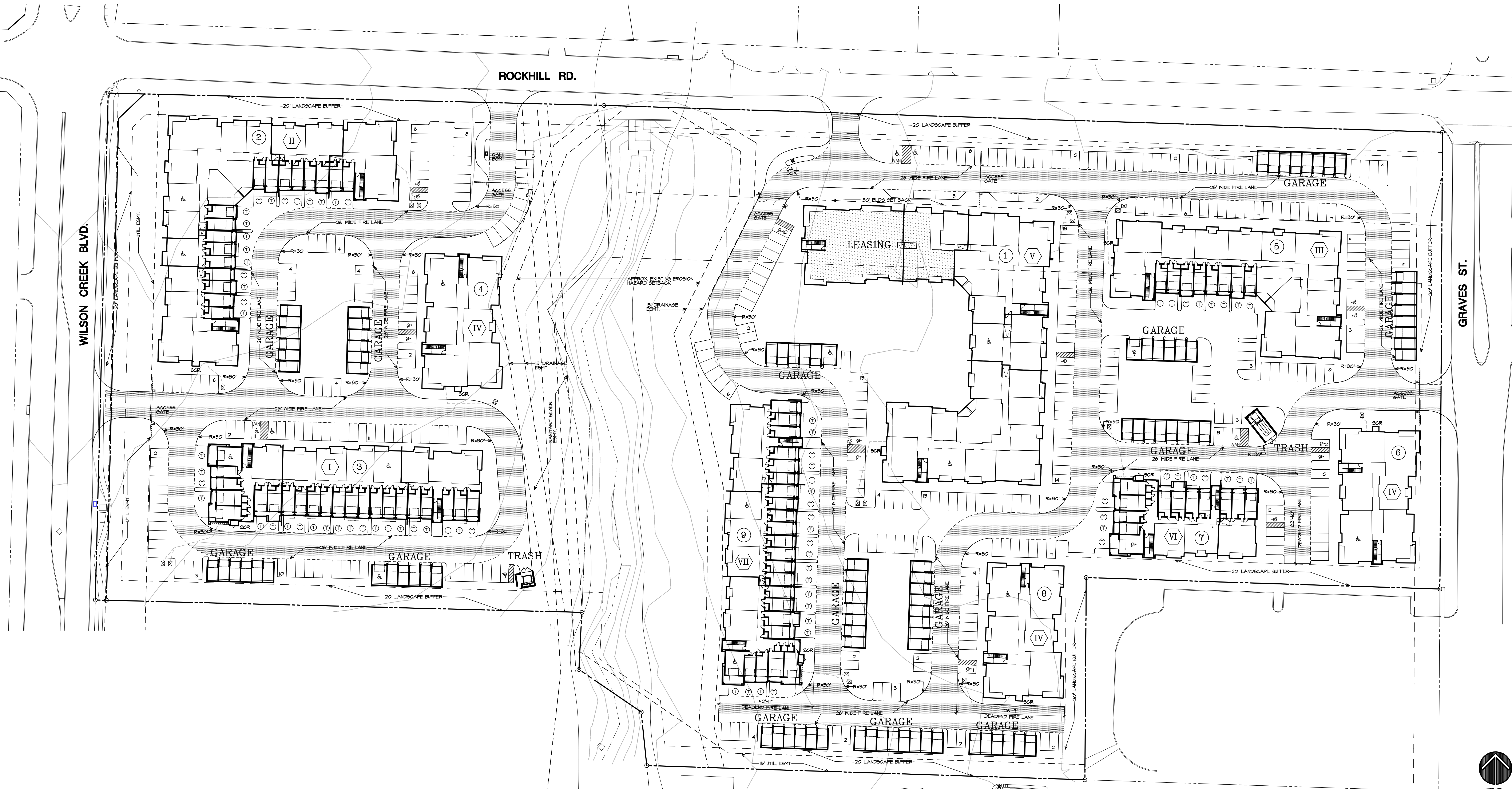
PARKING RATIO W/ TANDEM: 1.74 SPACE/UNIT
 PARKING RATIO W/O TANDEM: 1.43 SPACE/UNIT

THIS DRAWING HAS BEEN PREPARED UNDER THE DIRECT SUPERVISION OF JASON D. MEARES TEXAS REGISTRATION #2359 AND IS CONSIDERED TO BE **INCOMPLETE**

THIS DRAWING MAY NOT BE USED FOR REGULATORY APPROVAL, PERMIT, OR CONSTRUCTION WITHOUT THE ARCHITECT'S OFFICIAL SEAL.

Copyright: © 2018 by Womack+Hampton Architects, L.L.C. All rights reserved. The arrangements depicted herein are the sole property of WHA, L.L.C. and may not be reproduced in any form without written permission.

Project No. 18038
 Drawn By: _____
 ISSUE FOR PERMIT: _____
 LEVEL IV ISSUE: _____
 Revisions: _____



01 SITE PLAN
 MARCH 26, 2019
 SCALE: 1" = 40'

TRUE NORTH

0 40 80 160

PLOT DATE: 11-14-2008, OT TIME: 4:13 PM PATH: NAME: H:\0000\0000\DRAWING\DCS

Jefferson Rockhill
 McKinney, Texas
JPI

Womack+Hampton
 ARCHITECTS, L.L.C.
 6311 Oak Lawn Ave., Suite 50
 Dallas, Texas 75226
 Phone: (214) 222-2000
 Fax: (214) 222-2000

Sheet Number: **A1.1**
 SITE