

PLANT SCHEDULE

TREES	COMMON NAME / BOTANICAL NAME	CONT.	SIZE	QTY	REMARKS	
	Cedar Elm / Ulmus crassifolia	4" cal		2	B&B, Nursery Grown, Matched, Strong Central Leader, Ref. specifications and ANSI Z 2.50.1	
	Southern Live Oak / Quercus virginiana	6" cal		7	B&B, Nursery Grown, Matched, Strong Central Leader, Ref. specifications.	
SHRUBS	COMMON NAME / BOTANICAL NAME	CONT.	SIZE	QTY	REMARKS	
	Dwarf Wax Myrtle / Myrica carthagenica	3-5 GAL	36" ht. min.	93	Container, Nursery Grown, Matched and Well Rooted, Min. 36" height	
GROUND COVERS	COMMON NAME / BOTANICAL NAME	CONT.	SIZE	SPACING	QTY	REMARKS
	Shrubs & Groundcover	Varies	Varies		1,307 sf	33% 5 gal. @ 36" O.C. 33% 3 gal. @ 24" O.C. 33% 1 gal. @ 18" O.C.
	Bermuda Grass / Cynodon dactylon	sod	sod		79,630 sf	Refer to Specifications
	Bermuda Grass (Firelane) / Cynodon dactylon	sod	sod		8,840 sf	Refer to Specifications
	Parking Island Planting / Parking Island Planting	Varies			5,748 sf	Container, nursery grown, matched and well rooted

Independent Bank North Texas
Code Calculations Chart

Site Data	AC	SF
Total Site Area	5.35	233,243
Surface Parking Spaces	8	
Site Landscape Area	Required (% / SF)	Provided (% / SF)
10% of site to be landscaped	10%	38%
	23,324 SF	90,165 SF
Street Frontage	Required	Provided
Hennehan Way (288 LF)		
1 tree/ 40 LF	7	7
Grand Ranch Parkway (530 LF)		
1 tree/ 40 LF	13	14 (Existing)
Street Yard	Required (%)	Provided
Permanent landscape area within street yard	15	Yes
Parking Lot	Required	Provided
1 shade tree/ 10 parking spaces	1	2

DEVELOPER:
KDC Real Estate Development & Investments
8115 Preston Road, Suite 700
Dallas, Texas 75225
Phone (214) 696-7826
Contact: Mike Rosamond

ARCHITECT:
SmithGroupJJR
5910 North Central Expressway
Suite 1765
Dallas, Texas 75206
Phone (214) 559-4851
Fax (734) 780-8484
Contact: Tom Philippi, AIA, NCARB, LEED AP

LANDSCAPE ARCHITECT:
Kimley-Horn
106 W. Louisiana Street
McKinney, Texas 75069
Phone (469) 301-2599
Contact: Paul Freeland, P.L.A., ASLA

ENGINEER:
Cross Engineering Consultants, Inc.
131 S. Tennessee St.
McKinney, Texas 75069
Phone (972) 562-4409
Fax (972) 562-4471
Contact: Jonathan D. Hake, P.E.

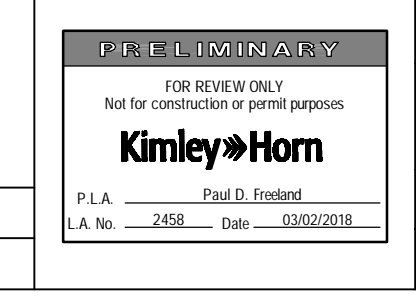
SURVEYOR:
AJ Bedford Group, Inc.
301 North Alamo Road
Rockwall, Texas 75087
Phone (972) 722-0225
Contact: Jay Bedford, R.P.L.S.

Issue Dates:	Revisions:	Date:
1	1	
2	2	
3	3	
4	4	
5	5	
6	6	

Kimley»Horn

© 2016 KIMLEY-HORN AND ASSOCIATES, INC.
106 WEST LOUISIANA, MCKINNEY, TX 75069
PHONE: 469 301 2589
WWW.KIMLEY-HORN.COM

Drawn By: CLS Checked By: AJB Scale: 1"=30'



IBTX CORPORATE HEADQUARTERS CRAIG RANCH
KDC REAL ESTATE DEVELOPMENT & INVESTMENTS
CITY OF MCKINNEY, TEXAS

Sheet No.
Project No.
068061001

NOTE: THIS IS NOT A CONSTRUCTION DOCUMENT.
THIS DOCUMENT IS FOR CONCEPTUAL PLANNING PURPOSES ONLY.

IBTX CORPORATE HEADQUARTERS - CRAIG RANCH